

REV	LOCATIONS	DESCRIPTION	DATE	REVISER	APPD

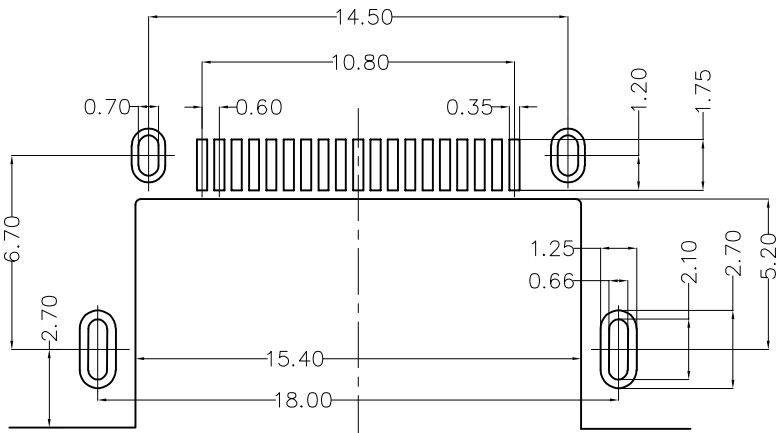
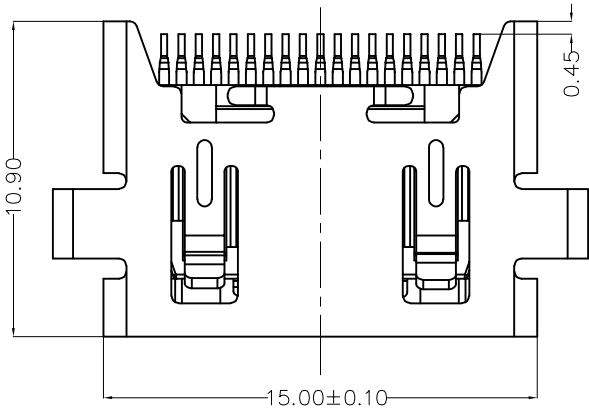
**SPECIFICATIONS**

**Electrical**  
 Current Rating: 0.5A AC(rms)/DC  
 Voltage Rating: 40V AC(rms)/DC  
 Contact Resistance: 30 mΩ Max  
 Insulation Resistance: 100 MΩ Min  
 Withstanding Voltage: 300V AC r.m.s

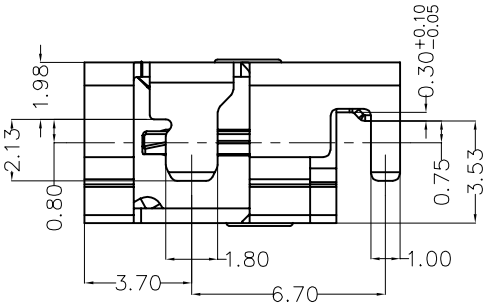
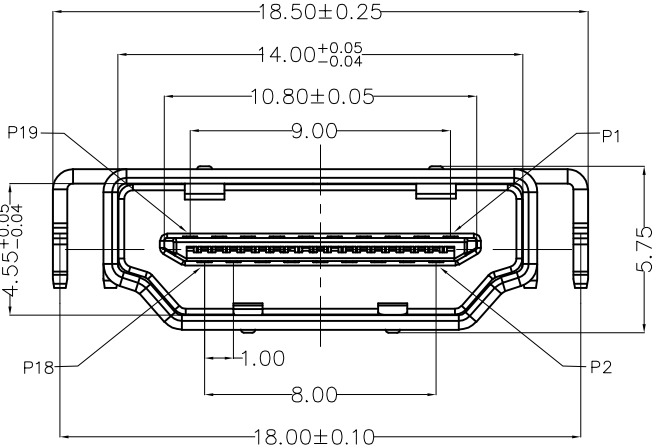
**Mechanical**  
 Mating force: 4.4KG.F Max  
 Retention force: 1.0-4.0KG.F  
 Durability: 10000 cycles Min.

**Environmental**  
 Operating Temperature: -20°C~+85°C

**Material and plating**  
 Housing: LCP (UL 94V-0), Black  
 Contacts: Copper Alloy/Gold plated on contact, Matte Tin plated on tail  
 Shell: SPCC/Nikel plated



Recommended P.C.Board Layout  
 General Tolerances: ±0.05mm



Pin	Signal Assignment	Pin	Signal Assignment
1	TMDS Data2+	2	TMDS Data2 Shield
3	TMDS Data2-	4	TMDS Data1+
5	TMDS Data1 Shield	6	TMDS Data1-
7	TMDS Data0+	8	TMDS Data0 Shield
9	TMDS Data0-	10	TMDS Clock+
11	TMDS Clock Shield	12	TMDS Clock-
13	CEC	14	Reserved (N.C. on device)
15	SCL	16	SDA
17	DDC/CEC Ground	18	+5V Power
19	Hot Plug Detect	/	/

 THIRD ANGLE PROJECTION	GENERAL TOLERANCES (UNLESS SPECIFIED)		APPROVE BY FRANK	DATE 15/AUG/22	PART NO. FHD32-FSB700BKM	ITEM NO. FHD32
	X.±0.30	X'±5'	CHECKED BY CHERRY	DATE 15/AUG/22	TITLE HDMI A/F 90° (SMT)	
	X.X±0.20	.X'±2'	DRAWN BY QING	DATE 15/AUG/22	THIS DRAWING CONTAINS INFORMATION THAT IS PROPRIETARY TO TXGA INDUSTRIAL ELECTRONICS(S.Z)CO.,LTD AND SHOULD NOT BE USED WITHOUT WRITTEN PERMISSION	
	X.XX±0.15	.XX'±1'			REV 0	SHEET NO. 1/2
SCALE 5:1	SIZE A4	X.XXX±0.10	.XXX'±0.5'			

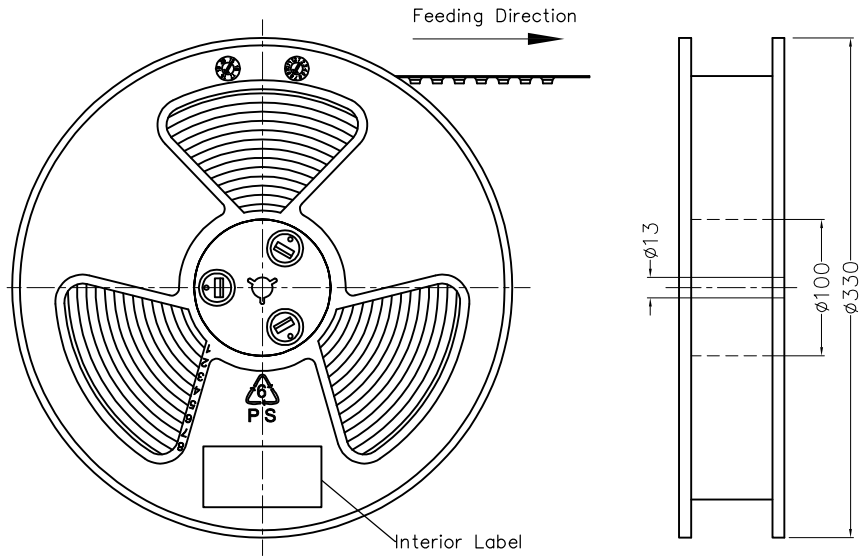


THIS DRAWING CONTAINS INFORMATION THAT IS PROPRIETARY TO TXGA INDUSTRIAL ELECTRONICS(S.Z)CO.,LTD AND SHOULD NOT BE USED WITHOUT WRITTEN PERMISSION	
--	--

1 2 3 4 5 6 7 8

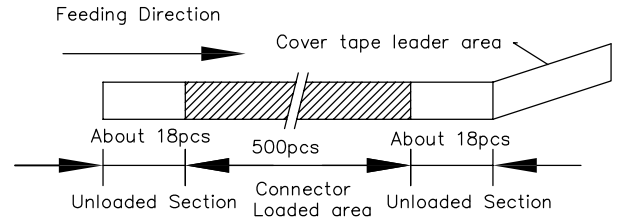
REV	LOCATIONS	DESCRIPTION	DATE	REVISER	APPD

A

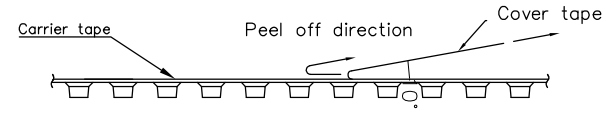


- Note:
- 1.10 sprocket hole cumulative tolerance  $\pm 0.2$
  2. Carrier camber is within 1.0mm in 250mm
  3. Material: Clear conductive polystyrene Alloy 100% recyclable
  4. All dimensions meet EIA-481-3 requirements
  5. Peel off force of cover tape & carrier tape: 20g~130g (0.2N~1.3N)
  6. Component load per 13" reel: 500 pcs

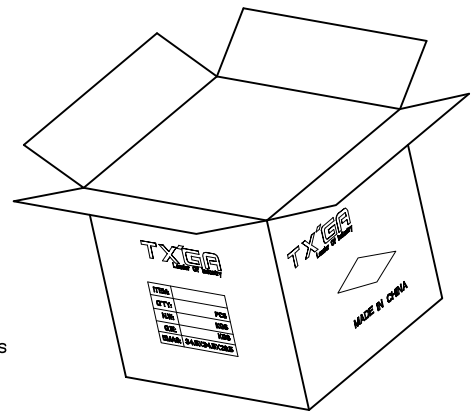
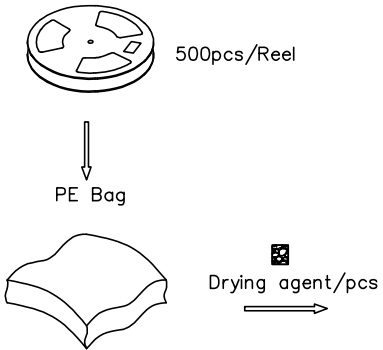
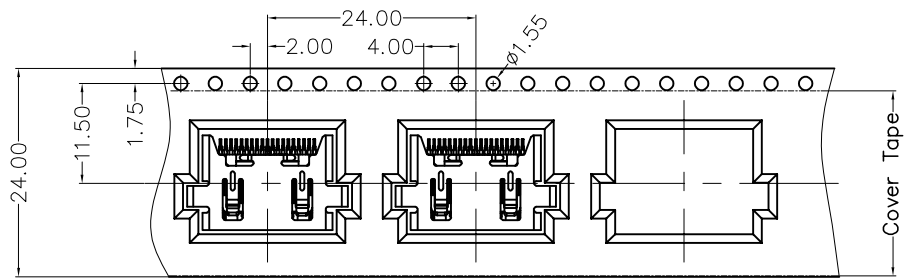
B



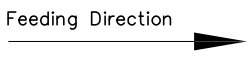
C



D



F



<p>THIRD ANGLE PROJECTION</p>	GENERAL TOLERANCES (UNLESS SPECIFIED)		APPROVE BY	DATE	PART NO.	ITEM NO.	<p>Leader Of Industry</p>	
	X.±0.30	X.±5'	FRANK	15/AUG/22	FHD32-FSB700BKM	FHD32		
	DESIGN UNITS (metric)	X.X±0.20	.X'±2'	CHECKED BY	DATE	TITLE		REV 0    SHEET NO. 2/2
	SCALE 5:1	X.XX±0.15	.XX'±1"	CHERRY	15/AUG/22	HDMI A/F 90° (SMT)		
SIZE A4	X.XXX±0.10	.XXX'±0.5"	DRAWN BY	DATE	THIS DRAWING CONTAINS INFORMATION THAT IS PROPRIETARY TO TXGA INDUSTRIAL ELECTRONICS(S.Z)CO.,LTD AND SHOULD NOT BE USED WITHOUT WRITTEN PERMISSION			
			QING	15/AUG/22				

1 2 3 4 5 6 7 8