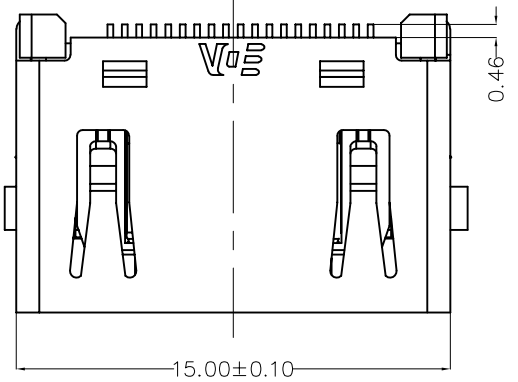


REV	LOCATIONS	DESCRIPTION	DATE	REVISER	APPD

A
B
C
D
E
F

A
B
C
D
E
F



Pin	Signal Assignment	Pin	Signal Assignment	Pin	Signal Assignment	Pin	Signal Assignment
1	TMDS Data2+	11	TMDS Clock Shield	2	TMDS Data2 Shield	12	TMDS Clock-
3	TMDS Data2-	13	CEC	4	TMDS Data1+	14	Reserved (N.C. on device)
5	TMDS Data1 Shield	15	SCL	6	TMDS Data1-	16	SDA
7	TMDS Data0+	17	DDC/CEC Ground	8	TMDS Data0 Shield	18	+5V Power
9	TMDS Data0-	19	Hot Plug Detect	10	TMDS Clock+	/	/

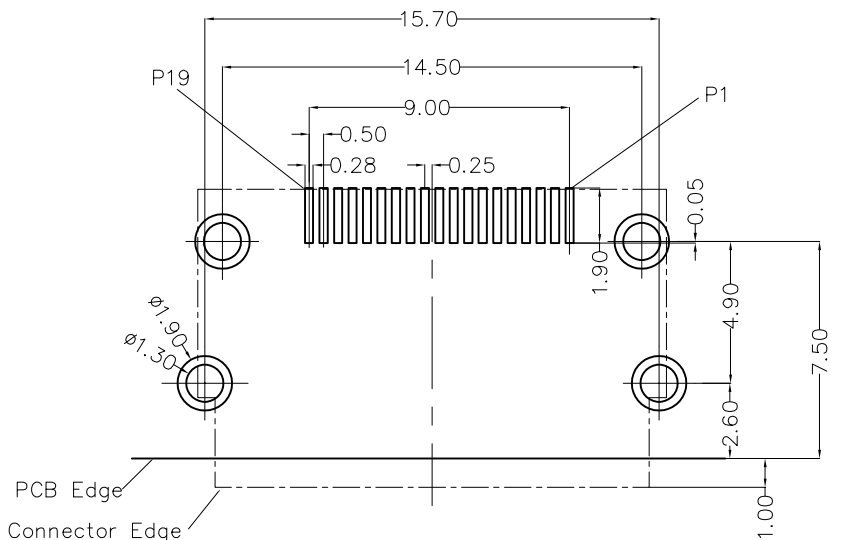
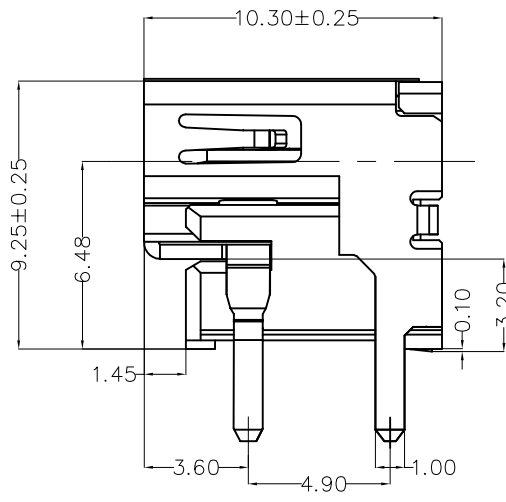
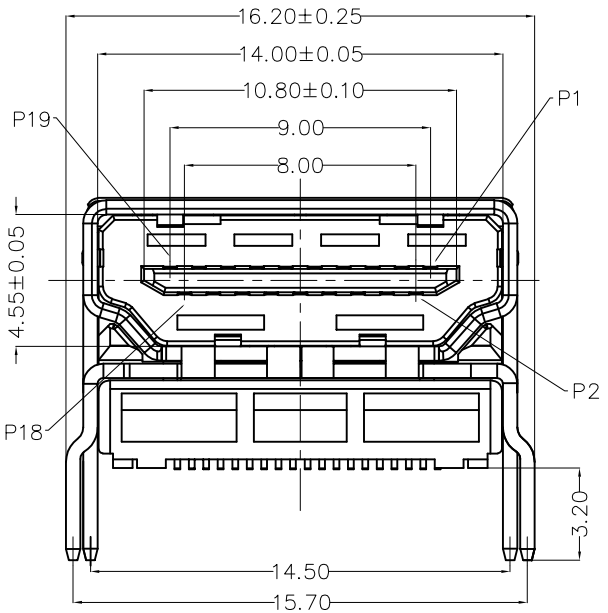
SPECIFICATIONS

Electrical
 Current Rating: 0.5A AC(rms)/DC
 Voltage Rating: 40V AC(rms)/DC
 Contact Resistance: 30 mΩ Max
 Insulation Resistance: 100 MΩ Min
 Withstanding Voltage: 300V AC r.m.s

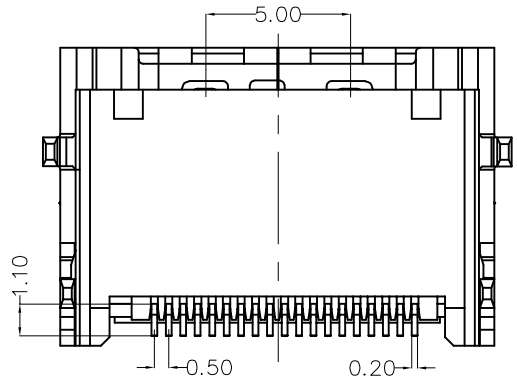
Mechanical
 Mating force: 4.4KG.F Max
 Retention force: 0.98KG.F Min
 Durability: 10000 cycles Min.

Environmental
 Operating Temperature: -25°C~+85°C

Material and plating
 Housing: LCP (UL 94V-0), Black
 Contacts: Copper Alloy/Gold plated on contact, Bright Tin plated on tail
 Shell: Copper Alloy/Nikel plated



Recommended P.C.Board Layout
 General Tolerances: ±0.05mm

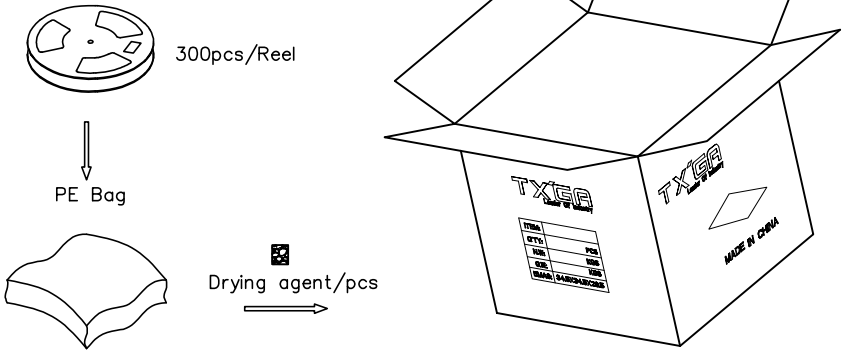
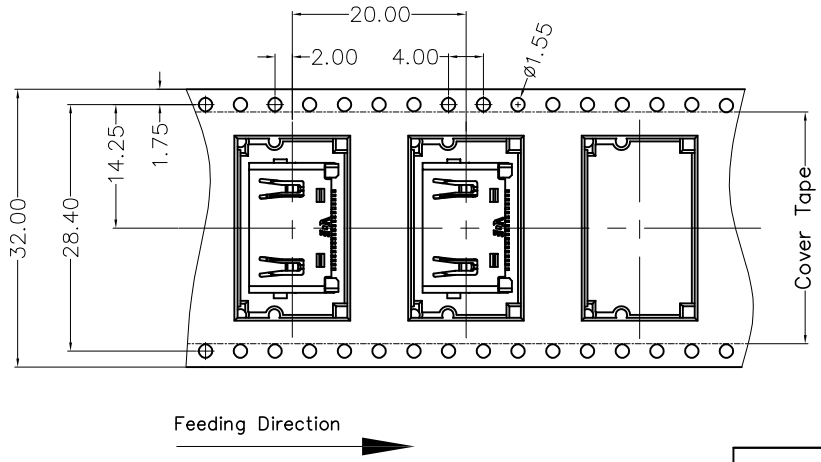
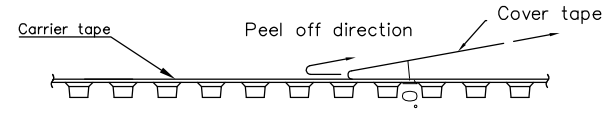
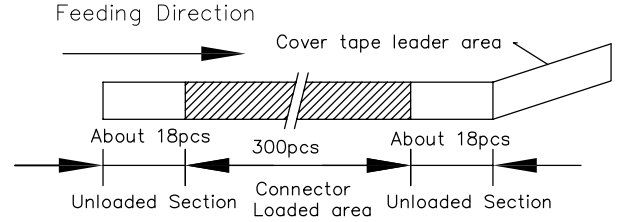
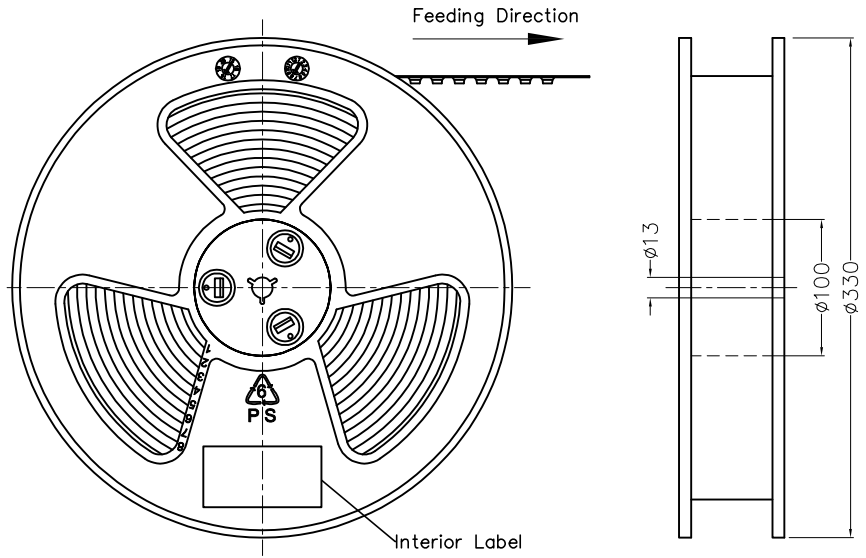


 THIRD ANGLE PROJECTION	GENERAL TOLERANCES (UNLESS SPECIFIED)		APPROVE BY	DATE	PART NO.	ITEM NO.	 Leader Of Industry	
	X.±0.30	X.±5°	FRANK	15/AUG/22	FHD34-FSB300BKM	FHD34		
	DESIGN UNITS (metric)		CHECKED BY	DATE	TITLE			REV 0
	X.XX±0.20	.X'±2°	CHERRY	15/AUG/22	HDMI A/F 90° (SMT)			SHEET NO. 1/2
SCALE	SIZE	X.XX±0.15	.XX'±1°	DRAWN BY	DATE	THIS DRAWING CONTAINS INFORMATION THAT IS PROPRIETARY TO TXGA INDUSTRIAL ELECTRONICS(S.Z)CO.,LTD AND SHOULD NOT BE USED WITHOUT WRITTEN PERMISSION		
5:1	A4	X.XXX±0.10	.XXX'±0.5°	QING	15/AUG/22			

1 2 3 4 5 6 7 8

REV	LOCATIONS	DESCRIPTION	DATE	REVISER	APPD

- Note:
- 1.10 sprocket hole cumulative tolerance ± 0.2
 2. Carrier camber is within 1.0mm in 250mm
 3. Material: Clear conductive polystyrene Alloy 100% recyclable
 4. All dimensions meet EIA-481-3 requirements
 5. Peel off force of cover tape & carrier tape: 20g~130g (0.2N~1.3N)
 6. Component load per 13" reel: 300 pcs



 THIRD ANGLE PROJECTION	GENERAL TOLERANCES (UNLESS SPECIFIED)		APPROVE BY	DATE	PART NO.	ITEM NO.	 Leader Of Industry		
	X. ± 0.30	X. $\pm 5^{\circ}$	FRANK	15/AUG/22	FHD34-FSB300BKM	FHD34			
	DESIGN UNITS (metric)	X.X ± 0.20	X. $\pm 2^{\circ}$	CHECKED BY	DATE	TITLE		REV 0	SHEET NO. 2/2
	SCALE 5:1	X.XX ± 0.15	.XX $\pm 1^{\circ}$	CHERRY	15/AUG/22	HDMI A/F 90° (SMT)			
SIZE A4	X.XXX ± 0.10	.XXX $\pm 0.5^{\circ}$	DRAWN BY	DATE	THIS DRAWING CONTAINS INFORMATION THAT IS PROPRIETARY TO TXGA INDUSTRIAL ELECTRONICS(S.Z)CO.,LTD AND SHOULD NOT BE USED WITHOUT WRITTEN PERMISSION				
			QING	15/AUG/22					