

REV	LOCATIONS	DESCRIPTION	DATE	REVISER	APPD

**SPECIFICATIONS**

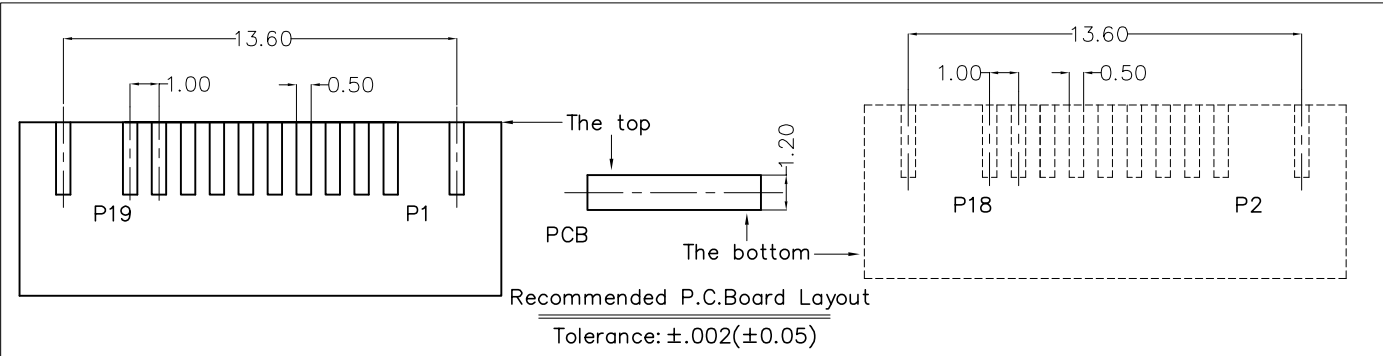
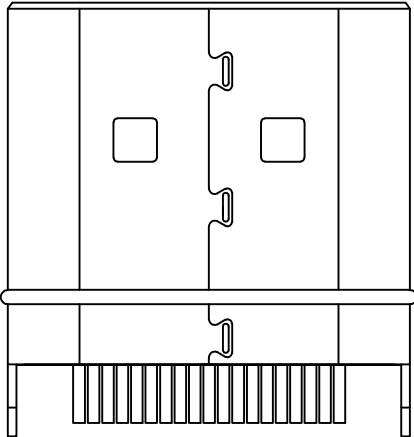
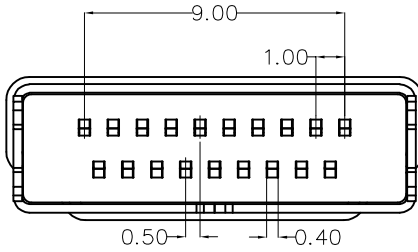
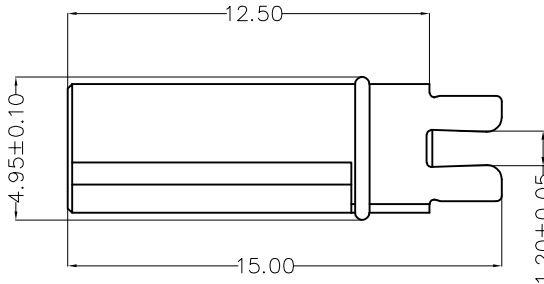
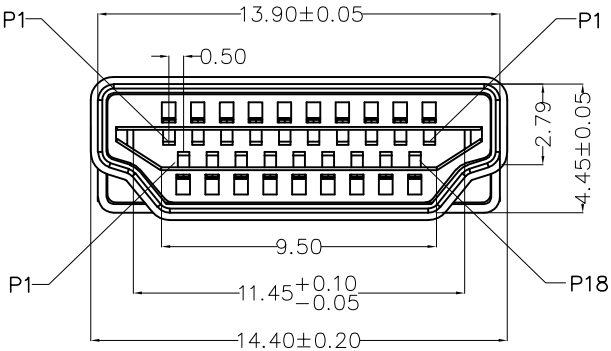
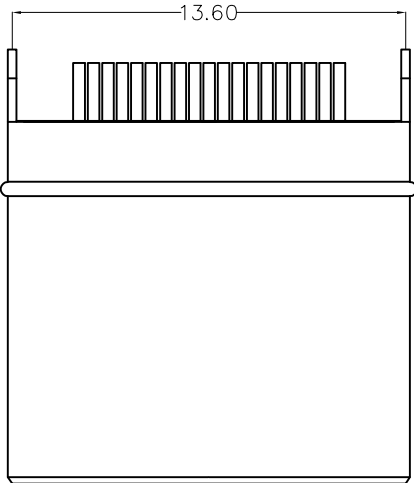
**Electrical**  
 Current Rating: 0.5A AC(rms)/DC  
 Voltage Rating: 40V AC(rms)/DC  
 Contact Resistance: 10 mΩ Max  
 Insulation Resistance: 100 MΩ Min  
 Withstanding Voltage: 500V AC r.m.s

**Mechanical**  
 Mating force: 4.5KG.F Max  
 Retention force: 1.0KG.F Min  
 Durability: 10000 cycles Min.

**Environmental**  
 Operating Temperature: -25°C~+85°C

**Material and plating**  
 Housing: LCP (UL 94V-0), Black  
 Contacts: Copper Alloy/Gold plated on contact, Matte Tin plated on tail  
 Shell: SPCC/Nikel plated

Pin	Signal Assignment	Pin	Signal Assignment	Pin	Signal Assignment	Pin	Signal Assignment
1	TMDS Data2+	11	TMDS Clock Shield	2	TMDS Data2 Shield	12	TMDS Clock-
3	TMDS Data2-	13	CEC	4	TMDS Data1+	14	Reserved (N.C. on device)
5	TMDS Data1 Shield	15	SCL	6	TMDS Data1-	16	SDA
7	TMDS Data0+	17	DDC/CEC Ground	8	TMDS Data0 Shield	18	+5V Power
9	TMDS Data0-	19	Hot Plug Detect	10	TMDS Clock+	/	/



 THIRD ANGLE PROJECTION DESIGN UNITS (metric) SCALE 5:1 SIZE A4	GENERAL TOLERANCES (UNLESS SPECIFIED)		APPROVE BY FRANK	DATE 15/AUG/22	PART NO. FHD41-MCS700BKK	ITEM NO. FHD41	 Leader Of Industry
	X.±0.30	X.±5°	CHECKED BY CHERRY	DATE 15/AUG/22	TITLE HDMI A/M 180° (Splint)		
	X.XX±0.15	.XX'±1"	DRAWN BY QING	DATE 15/AUG/22	THIS DRAWING CONTAINS INFORMATION THAT IS PROPRIETARY TO TXGA INDUSTRIAL ELECTRONICS(S.Z)CO.,LTD AND SHOULD NOT BE USED WITHOUT WRITTEN PERMISSION		
	X.XXX±0.10	.XXX'±0.5"					