

REV	LOCATIONS	DESCRIPTION	DATE	REVISER	APPD
1	▲	Structure Change	23/MAY/23	MATT	CHERRY

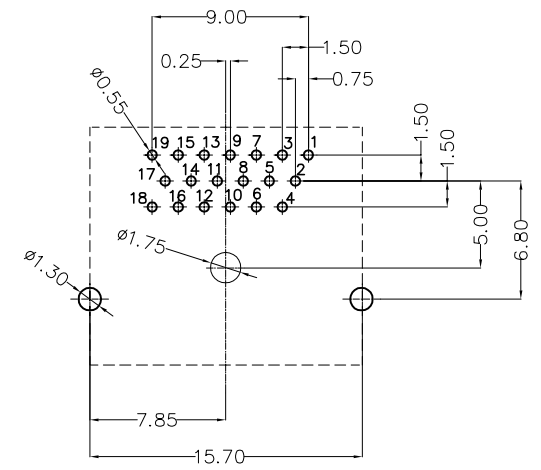
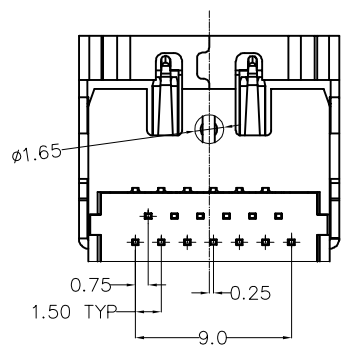
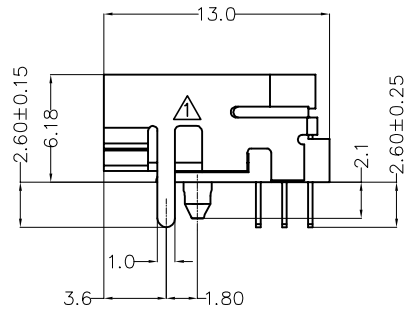
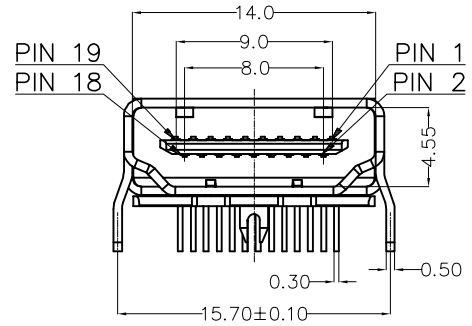
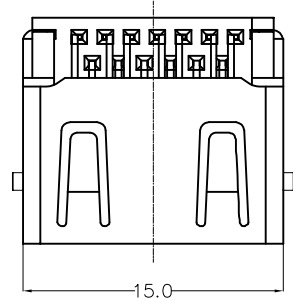
SPECIFICATIONS

Electrical
 Current Rating: 0.5A AC(rms)/DC
 Voltage Rating: 40V AC(rms)/DC
 Contact Resistance: 20 mΩ Max
 Insulation Resistance: 100 MΩ Min
 Withstanding Voltage: 500V AC r.m.s

Mechanical
 Mating force: 4.5KG.F Max
 Retention force: 1.0KG.F Min
 Durability: 10000 cycles Min.

Environmental
 Operating Temperature: -40°C~+85°C

Material and plating
 Housing: LCP (UL 94V-0), Black
 Contacts: Copper Alloy/Gold flash on contact, Matte Tin plated on tail
 Shell: Copper Alloy/Nikel plated



Recommended P.C.Board Layout
 Tolerance: ±0.05

<p>THIRD ANGLE PROJECTION</p>	GENERAL TOLERANCES (UNLESS SPECIFIED)		APPROVE BY	DATE	PART NO.	ITEM NO.	<p>Leader Of Industry</p>	
	X.±0.30	X.'±5'	FRANK	09/OCT/22	FHD42-FDB700BKK	FHD42		
	DESIGN UNITS (metric)		CHECKED BY	DATE	TITLE			REV 1
	X.XX±0.20	.X'±2'	CHERRY	09/OCT/22	HDMI A-type 19Circuits ,90° Angle(DIP)			
SCALE	SIZE	DRAWN BY		DATE	THIS DRAWING CONTAINS INFORMATION THAT IS PROPRIETARY TO TXGA INDUSTRIAL ELECTRONICS(S.Z)CO.,LTD AND SHOULD NOT BE USED WITHOUT WRITTEN PERMISSION		SHEET NO. 1/1	
5:1	A4	MATT		09/OCT/22				