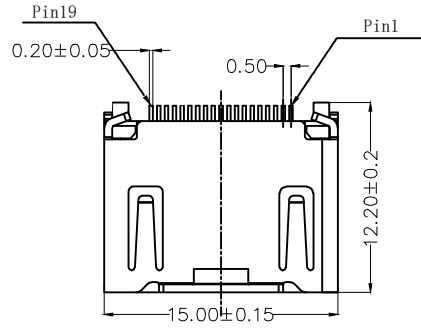


1 2 3 4 5 6 7 8

REV	LOCATIONS	DESCRIPTION	DATE	REVISER	APPD

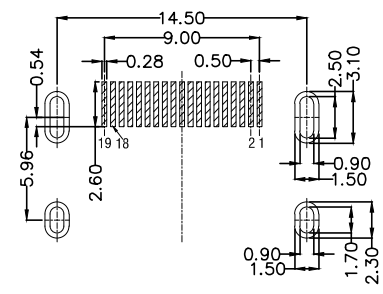
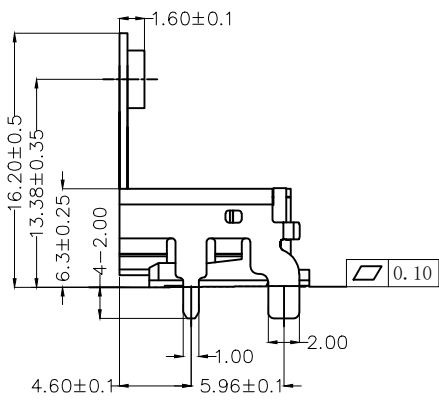
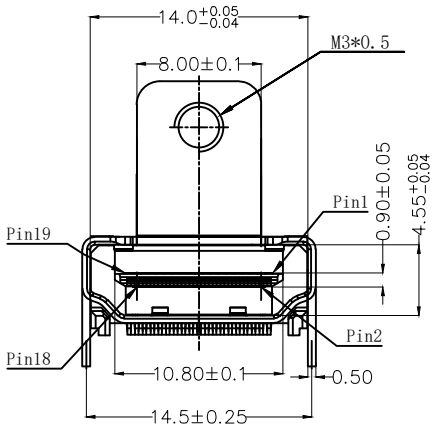


SPECIFICATIONS

Electrical
 Current Rating: 0.5A AC(rms)/DC
 Voltage Rating: 40V AC(rms)/DC
 Contact Resistance: 30 mΩ Max
 Insulation Resistance: 100 MΩ Min
 Withstanding Voltage: 500V AC r.m.s
 Operating Temperature: -25°C~+85°C

Mechanical
 Insertion force: 44.1 N (4.5 kgf) Max
 Withdrawal force: 9.8~39.2 N (1.0~4.0 kgf)

Material And Plating
 Housing: Thermoplastic UL 94V-0, Black
 Contact: Copper Alloy/ Gold Plated on contact area and matte tin plated on solder area
 Shell: Nickel Plated



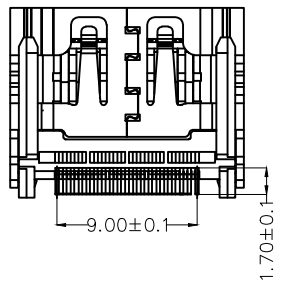
Recommended P.C.Board Layout
 Tolerance: ±0.05

Ordering Information

FHD 44 F S B 7 XX BK K A
 1 2 3 4 5 6 7 8 9

1 Category FHD-HDMI	2 Distinction No 44	3 Type F-Female	4 Assembly Layout S-SMT	5 Entry Angle B-90° Angle
6 Plating 7-Selective gold on contact and tin on tails	7 Thickness of Plating 00-Gold Flash 03-3μ"	8 Color-Resin BK-Black	9 Packaging K-Tray	

Custom plate available



<p>THIRD ANGLE PROJECTION</p>	GENERAL TOLERANCES (UNLESS SPECIFIED) X. ±0.30 X.' ±5' X.X ±0.20 X.X' ±2' X.XX ±0.15 X.XX' ±1' X.XXX ±0.10 X.XXX' ±0.5'		APPROVE BY LEO	DATE 09/OCT/22	PART NO. FHD44-FSB7XXBKK-A	ITEM NO. FHD44	<p>Building Technology Cornerstone</p>
	DESIGN UNITS METRIC	CHECKED BY GISELLE	DATE 09/OCT/22	TITLE HDMI A-type 19Circuits 90° Angle(SMT)		REV 0	
SCALE 5:1	SIZE A4	DRAWN BY NICK	DATE 09/OCT/22	THIS DRAWING CONTAINS INFORMATION THAT IS PROPRIETARY TO TXGA INDUSTRIAL ELECTRONICS(S.Z)CO.,LTD AND SHOULD NOT BE USED WITHOUT WRITTEN PERMISSION			

1 2 3 4 5 6 7 8