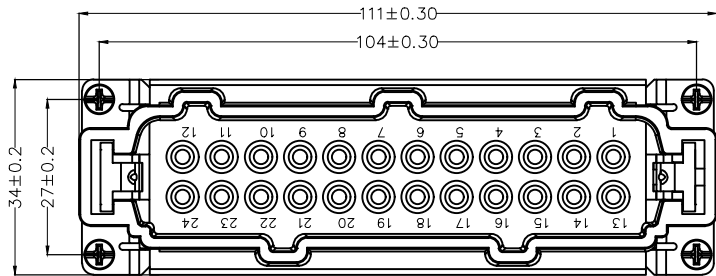


1 2 3 4 5 6 7 8

REV	LOCATIONS	DESCRIPTION	DATE	REVISER	APPD



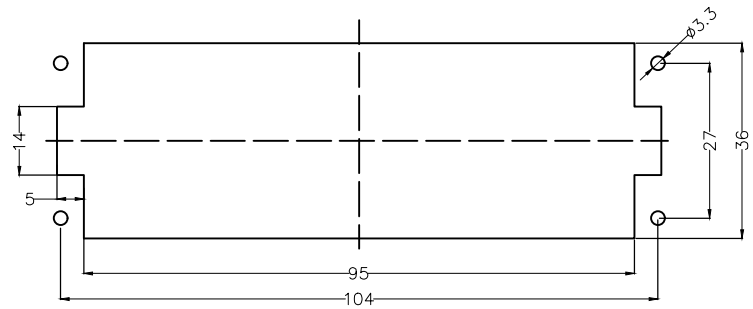
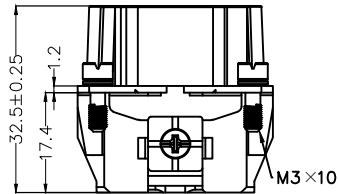
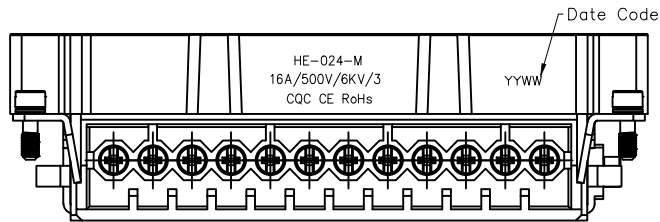
SPECIFICATIONS

Electrical

Current Rating: 16A AC(rms)/DC
 Voltage Rating: 500V AC(rms)/DC
 Rated pulse voltage: 6KV
 Contact Resistance: 1mΩ Max
 Insulation Resistance: 10000MΩ Min
 Operating Temperature: -40°C ~ +125°C
 Mating cycles: ≥500
 Range of wire diameter: 0.75-2.5mm² (18-14 AWG)
 Pollution Degree: 3

Material

No. of contact: 24+PE
 Insulation Material: PC (UL 94V-0)
 Terminal: Copper alloy/Silver plating
 Screw: Copper alloy/Nickel plated
 Stripping length: 7.00±0.5mm
 Screw torque: 0.5N.m



Recommended Panel Layout

Ordering Information

FHE000 01 — M 024 4 NA E 0
 1 2 3 4 5 6

1	Category FHE000-HE Connector	2	Gender M-Male	3	Circuits 024	4	Plating 4-Silver plating	5	Color NA-Natural	6	Wiring type E-Fix with screw
---	---------------------------------	---	------------------	---	-----------------	---	-----------------------------	---	---------------------	---	---------------------------------

<p>THIRD ANGLE PROJECTION</p>	GENERAL TOLERANCES (UNLESS SPECIFIED)		APPROVE BY LEO	DATE 02/AUG/24	PART NO. FHE00001-M0244NAE0	ITEM NO. FHE00001	<p>Building Technology Cornerstone</p>
	X. ±0.30	X.* ±5'	CHECKED BY GISELLE	DATE 02/AUG/24	TITLE Heavy-duty connector, 24 Insert (Male)		
DESIGN UNITS METRIC	X.X ±0.20	X.X' ±2'	DRAWN BY NICK	DATE 02/AUG/24	THIS DRAWING CONTAINS INFORMATION THAT IS PROPRIETARY TO TXGA INDUSTRIAL ELECTRONICS(S,Z)CO.,LTD AND SHOULD NOT BE USED WITHOUT WRITTEN PERMISSION		
SCALE 5:1	SIZE A4	X.XX ±0.15	X.XX' ±1'	X.XXX ±0.10	X.XXX' ±0.5'		

1 2 3 4 5 6 7 8