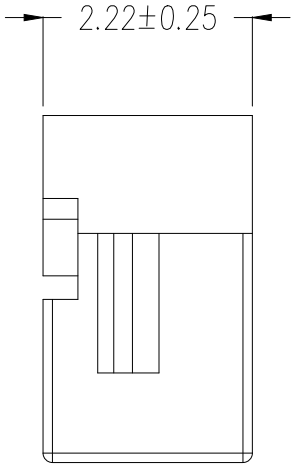
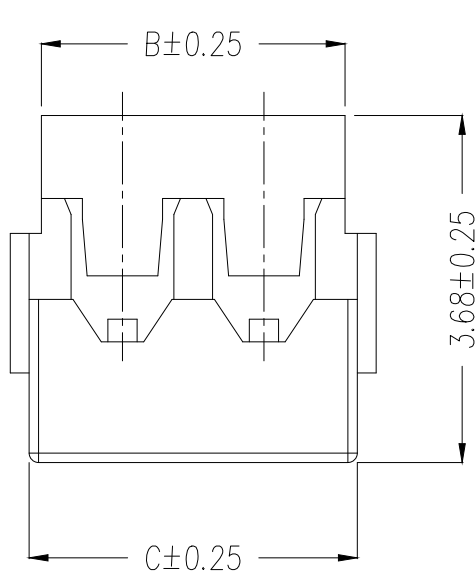
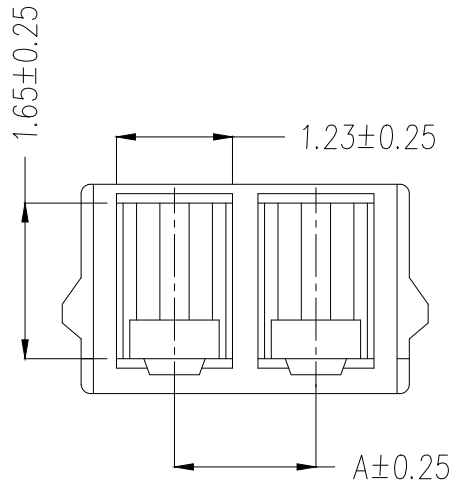


REV	LOCATIONS	DESCRIPTION	DATE	REVISER	APPD



SPECIFICATIONS

Electrical

- Current Rating: 1A AC/DC
- Voltage Rating: 100V AC/DC
- Contact Resistance: ≤40mΩ
- Insulation Resistance: 500 MΩ MIN
- Withstanding Voltage: 500V AC/minute
- Temperature Range—Operating: -25°C~+85°C

Material

- Housing: PA66 (UL94V-0), White
- Applicable Terminal: FT15006
- Mates With Socket: FWF15012 Series

Circuits (n)	Part NO.	Dimensions		
		A	B	C
2	FHG15006-S02M2WHB	1.50	3.22	3.48
3	FHG15006-S03M2WHB	3.00	4.72	4.98
5	FHG15006-S05M2WHB	6.00	7.72	7.98

Ordering Information

FHG 150 06 - S XX M 2 WH B
 1 2 3 4 5 6 7 8 9

1 Category: FHG-Housing 2 Series Number: 150-Pitch1.50mm 3 Distinction No.: 06 4 Row Option: S-Single row

5 Circuits: XX 6 Gender: M-Male 7 Material-Resin: 2-PA66 8 Color-Resin: WH-White 9 Packaging: B-Bag

<p>THIRD ANGLE PROJECTION</p>	GENERAL TOLERANCES (UNLESS SPECIFIED)		APPROVE BY	DATE	PART NO.	ITEM NO.	<p>Building Technology Cornerstone</p>		
	X. ±0.30	X.* ±5'	LEO	18/DEC/21	FHG15006-SXXM2WHB	FHG15006			
	DESIGN UNITS mm		CHECKED BY	DATE	TITLE			REV 0	SHEET NO. 1/1
	X.X ±0.20	X.X' ±2'	GISELLE	18/DEC/21	Wire to Board Pitch 1.50mm(Housing)				
SCALE 5:1	SIZE A4	X.XX ±0.15	X.XX' ±1'	DRAWN BY	DATE	THIS DRAWING CONTAINS INFORMATION THAT IS PROPRIETARY TO TXGA INDUSTRIAL ELECTRONICS(S.Z)CO.,LTD AND SHOULD NOT BE USED WITHOUT WRITTEN PERMISSION			
		X.XXX ±0.10	X.XXX' ±0.5'	PYD	18/DEC/21				