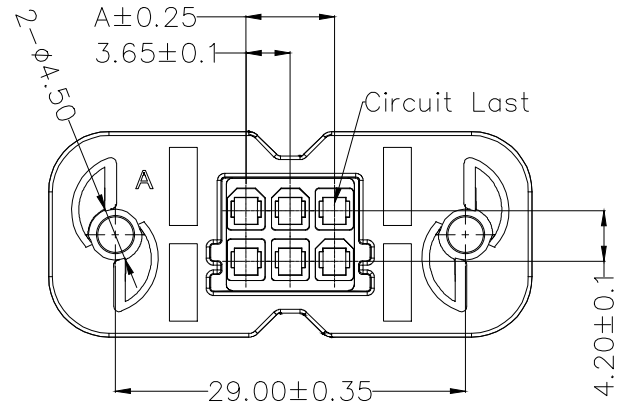


1 2 3 4 5 6 7 8

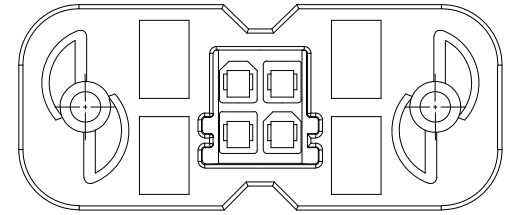
Part NO.	Dimensions	
	A	B
FHG36502-D04M2NAB	3.65	6.92
FHG36502-D06M2NAB	7.30	10.57
FHG36502-D08M2NAB	10.95	14.22

REV	LOCATIONS	DESCRIPTION	DATE	REVISER	APPD

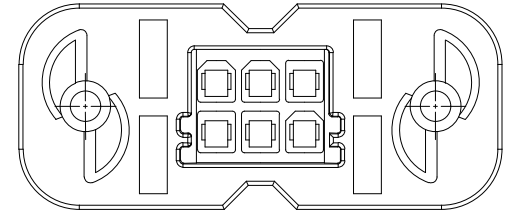


**SPECIFICATION**

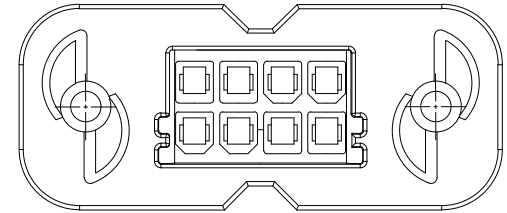
Rated Current: 5A MAX  
 Rated Voltage: 250V (AC/DC)  
 Withstand Voltage: 1000V AC/minute  
 Contact Resistance: 20mΩ MAX  
 Insulation Resistance: 1000MΩ MIN  
 Temperature Range: -25°C~+85°C  
 Housing: PA66(UL 94V-0), Natural  
 Applicable Terminal: FT36502-F  
 Mates With Housing: FHG36501 Series



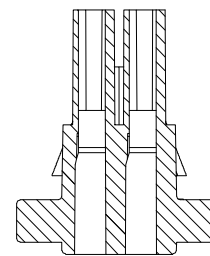
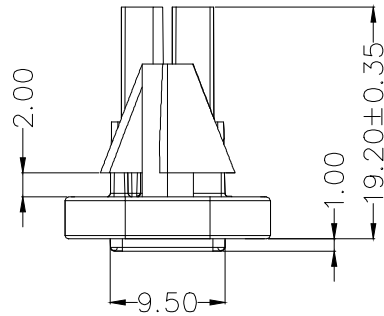
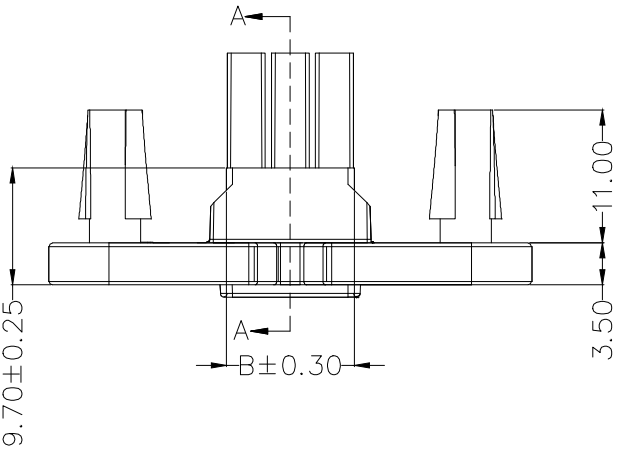
4 Circuit



6 Circuit



8 Circuit



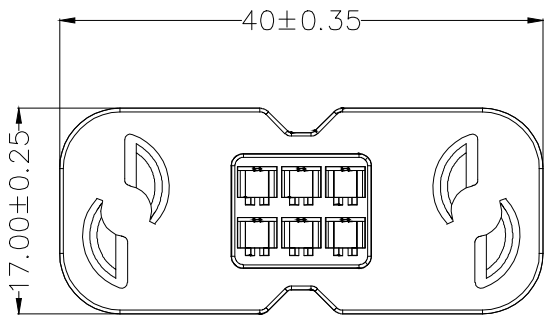
Section A-A

**Ordering Information**

FHG 365 02 — D XX M 2 NA B  
 1 2 3 4 5 6 7 8 9

1 Category FHG-Housing 2 Series Number 365-Pitch3.65mm 3 Distinction No. 02 4 Row Option D-Double row

5 Circuits XX 6 Gender M-Male 7 Material-Resin 2-PA66 8 Color-Resin NA-Natural 9 Packaging B-Bag



 THIRD ANGLE PROJECTION DESIGN UNITS mm SCALE 5:1 SIZE A4	GENERAL TOLERANCES (UNLESS SPECIFIED)		APPROVE BY LEO	DATE 26/SEP/21	PART NO. FHG36502-DXXM2NAB	ITEM NO. FHG36502	 Building Technology Cornerstone REV 0 SHEET NO. 1/1
	X. ±0.30	X.' ±5'	CHECKED BY GISELLE	DATE 26/SEP/21	TITLE Wire to Board Pitch 3.65mm (Housing)		
	X.X ±0.20	X.X' ±2'	DRAWN BY PYD	DATE 26/SEP/21	THIS DRAWING CONTAINS INFORMATION THAT IS PROPRIETARY TO TXGA INDUSTRIAL ELECTRONICS(S.Z)CO.,LTD AND SHOULD NOT BE USED WITHOUT WRITTEN PERMISSION		
	X.XX ±0.15	X.XX' ±1'					
	X.XXX ±0.10	X.XXX' ±0.5'					

1 2 3 4 5 6 7 8