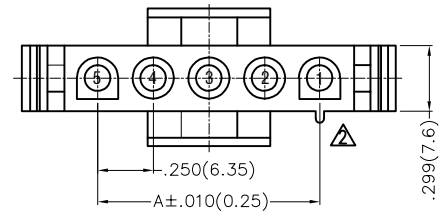
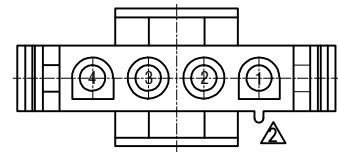
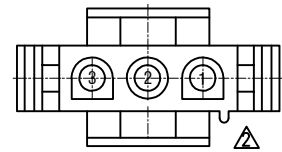
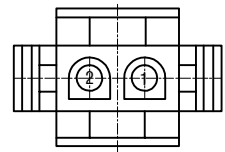
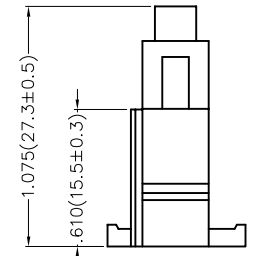
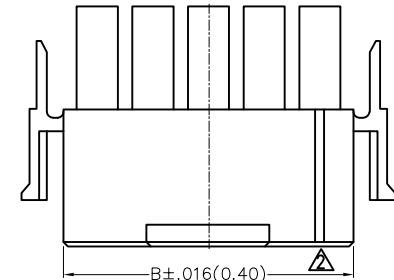
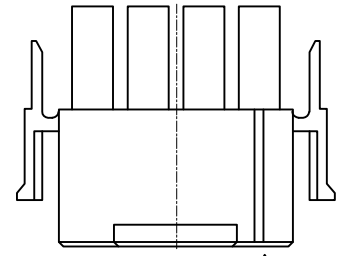
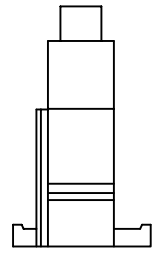
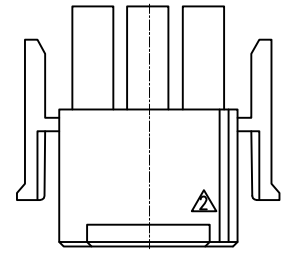
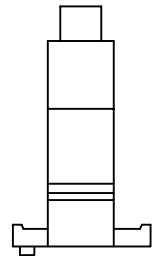
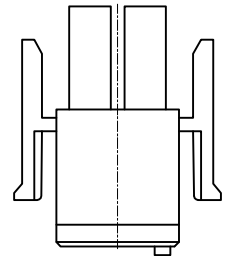


REV	LOCATIONS	DESCRIPTION	DATE	REVISER	APPD
1	△	Flammability change	14/AUG/23	MATT	LEO
2	△	Update drawings based on product	06/JUN/24	MATT	LEO



.299(7.6)



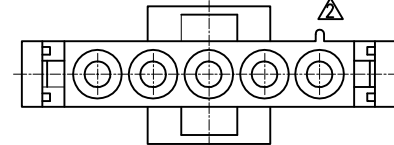
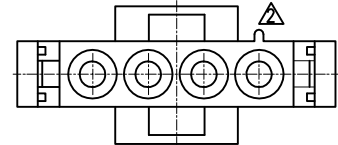
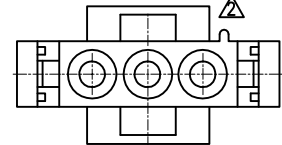
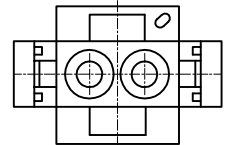
2 Circuits

3 Circuits

4 Circuits

5 Circuits

4-5 Circuits



Ordering Information

FHG 635 01 - S XX M 2 T B
 1 2 3 4 5 6 7 8 9

Circuits (n)	Part No.	Dimensions(in/mm)	
		A	B
2	FHG63501-S02M2TB	.250(6.35)	.551(14.00)
3	FHG63501-S03M2TB	.500(12.70)	.799(20.30)
4	FHG63501-S04M2TB	.744(19.05)	1.047(26.60)
5	FHG63501-S05M2TB	1.000(25.40)	1.295(32.90)

1	Category FHG-Housing	2	Series Number 635-Pitch6.35mm	3	Distinction No. 01	4	Row Option S-Single Row	5	Circuits XX
6	Entry Type M-Male	7	Material-Resin 2-PA66	8	Color-Resin T-Transparent	9	Packaging B-PE Bag		

Electrical
 Temperature Range-Operating: -25°C~+85°C
 Material
 Housing: PA66(UL 94V-2) △
 Applicable Terminal: FT63502-F2H
 Mates With: FWF63501Series.FHG63504Series.

 THIRD ANGLE PROJECTION	GENERAL TOLERANCES (UNLESS SPECIFIED)		APPROVE BY FRANK	DATE 18/JUN/13	PART NO. FHG63501-SXXM2TB	ITEM NO. FHG63501	 Building Technology Cornerstone		
	X.±.012(0.30)	X:±5'	CHECKED BY JACOB	DATE 18/JUN/13	TITLE Wire to Board Pitch 6.35mm(Housing)			REV 2	SHEET NO. 1/1
	X.X±.008(0.20)	.X'±2'	DRAWN BY CHERRY	DATE 18/JUN/13	THIS DRAWING CONTAINS INFORMATION THAT IS PROPRIETARY TO TXGA INDUSTRIAL ELECTRONICS(S.Z)CO.,LTD AND SHOULD NOT BE USED WITHOUT WRITTEN PERMISSION				
	X.XX±.006(0.15)	.XX'±1'							
SCALE 5:1	SIZE A4	X.XXX±.004(0.10)	.XXX'±0.5'						