

REV	LOCATIONS	DESCRIPTION	DATE	REVISER	APPD

SPECIFICATION

Technical Parameters

No. of contact: 4/4+PE
 Power area:
 Rated current: 63A
 Rated voltage: 690V
 Rated impulse voltage: 8KV
 Contact resistance: 0.5mΩ MAX
 Wire gauge: 6-16mm²(10-6 AWG)
 Max. insulation diameter: 11mm
 Stripping length: 11mm
 Tightening Torque: 6mm²(2N.m); 10mm²(3N.m); 16mm²(4N.m)
 Wrench Size: SW 2.5

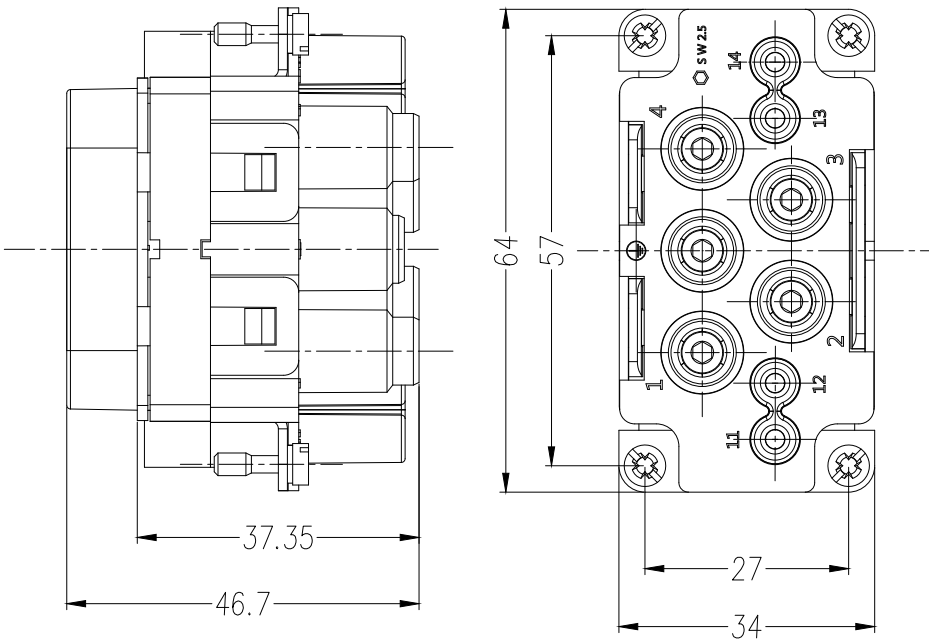
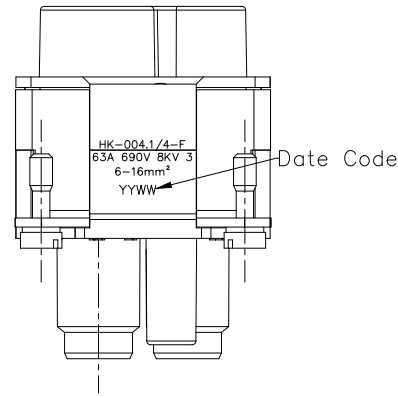
Signal area:
 Rated current: 16A
 Rated voltage: 250V
 Rated impulse voltage: 4KV
 Contact resistance: 3mΩ MAX
 Power contacts: 0.14-2.5mm²(26-14 AWG)
 Stripping length: 7-9mm
 Rated voltage acc.to UL/CSA: 600/230V
 Insulation resistance: 10¹⁰Ω MIN
 Temperature range: -40°C~+125°C
 Pollution degree: 3

Mechanical

Connection method: Screw locking/Spring terminal
 Durability: 500 cycles MIN

Material and Plating

Insulators: PC(UL 94V-0),Light grey
 Terminal:
 Power area: copper alloy, 3μm silver plated
 Signal area: copper alloy, 1μm silver plated
 Screw: Iron nickel plated
 Spring Contact Clip: Stainless Steel
 Panel Mounting Bracket: Stainless Steel



<p>THIRD ANGLE PROJECTION</p>	GENERAL TOLERANCES (UNLESS SPECIFIED)		APPROVE BY	DATE	PART NO.	ITEM NO.	<p>Building Technology Cornerstone</p>	
	X. ±0.30	X.* ±5'	LEO	30/JUN/21	FHK00002-F0084GYE0	FHK00002		
	DESIGN UNITS mm		CHECKED BY	DATE	TITLE		REV 0	SHEET NO. 1/1
	X.X ±0.20	X.X' ±2'	GISELLE	30/JUN/21	Heavy-duty connector HK Insert			
SCALE 5:1	SIZE A4	X.XX ±0.15	X.XX' ±1'	DRAWN BY	DATE	THIS DRAWING CONTAINS INFORMATION THAT IS PROPRIETARY TO TXGA INDUSTRIAL ELECTRONICS(S.Z)CO.,LTD AND SHOULD NOT BE USED WITHOUT WRITTEN PERMISSION		
		X.XXX ±0.10	X.XXX' ±0.5'	PYD	30/JUN/21			