

1 2 3 4 5 6 7 8

REV	LOCATIONS	DESCRIPTION	DATE	REVISER	APPD

A

A

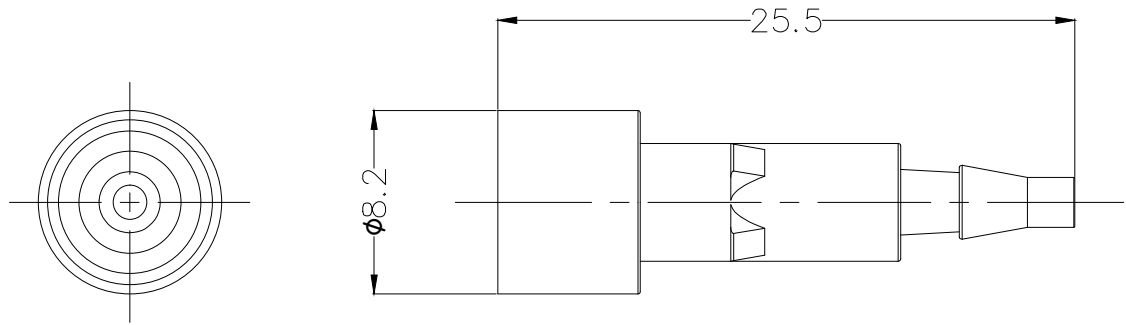
SPECIFICATIONS
 Material: POM(UL 94V-HB),Black
 Internal diameter(ID): 3.0mm
 Working pressure: up to 8 bar/116 psi
 Durability: 500 cycles MIN

B

B

C

C



D

D

E

E

F

F

 THIRD ANGLE PROJECTION	GENERAL TOLERANCES (UNLESS SPECIFIED)		APPROVE BY	DATE	PART NO.	ITEM NO.	 Building Technology Cornerstone	
	X. ±0.30	X.* ±5'	LEO	30/JUN/21	FHPC02-F030BK0	FHPC02		
	DESIGN UNITS mm		CHECKED BY	DATE	TITLE		REV 0	SHEET NO. 1/1
	SCALE 5:1	SIZE A4	X.X ±0.20	X.X' ±2'	GISELLE	30/JUN/21	Heavy-duty connector PCM Pneumatic insert	
		X.XX ±0.15	X.XX' ±1'	DRAWN BY	DATE	THIS DRAWING CONTAINS INFORMATION THAT IS PROPRIETARY TO TXGA INDUSTRIAL ELECTRONICS(S.Z)CO.,LTD AND SHOULD NOT BE USED WITHOUT WRITTEN PERMISSION		
		X.XXX ±0.10	X.XXX' ±0.5'	PYD	30/JUN/21			

1 2 3 4 5 6 7 8