

1 2 3 4 5 6 7 8

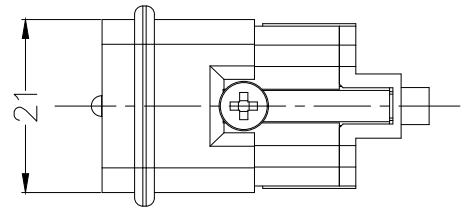
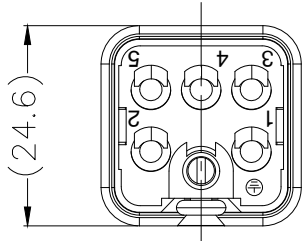
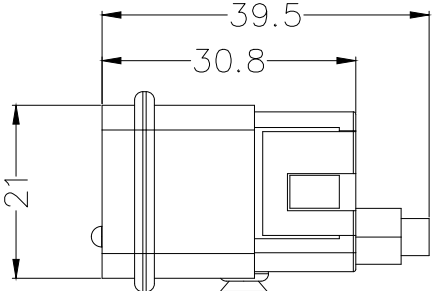
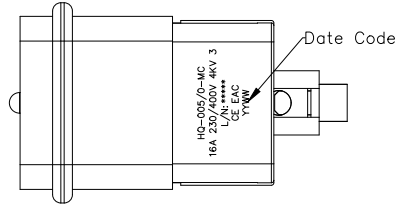
REV	LOCATIONS	DESCRIPTION	DATE	REVISER	APPD

SPECIFICATION

Technical Parameters
 No. of contact: 5+PE
 Rated current:16A
 Phase-to-earth rated voltage: 230V
 Phase-to-phase rated voltage: 400V
 Rated impulse voltage: 4KV
 Insulation resistance: 10¹⁰Ω MIN
 Temperature range: -40°C~+125°C
 Pollution degree: 3

Mechanical
 Connection method: Riveting
 Durability: 500 cycles MIN

Material and Plating
 Insulators: PC(UL 94V-0), Light grey
 Terminal: copper alloy, 1μm silver plated
 Clamping Screw: Brass
 Mounting Screw: Iron nickel plated
 Sealing element: NBR



A

B

C

D

E

F

A

B

C

D

E

F

1 2 3 4 5 6 7 8

<p>THIRD ANGLE PROJECTION</p>	GENERAL TOLERANCES (UNLESS SPECIFIED)		APPROVE BY	DATE	PART NO. FHQ00001-M0054GYE0	ITEM NO. FHQ00001	<p>Building Technology Cornerstone</p>		
	X. ±0.30	X.* ±5'	LEO	05/Jul/21					
	DESIGN UNITS mm	X.X ±0.20	X.X* ±2'	CHECKED BY	DATE	TITLE Heavy-duty connector HQ Insert		REV 0	SHEET NO. 1/1
	SCALE 5:1	X.XX ±0.15	X.XX* ±1'	GISELLE	05/Jul/21				
SIZE A4	X.XXX ±0.10	X.XXX* ±0.5'	DRAWN BY	DATE	THIS DRAWING CONTAINS INFORMATION THAT IS PROPRIETARY TO TXGA INDUSTRIAL ELECTRONICS(S.Z)CO.,LTD AND SHOULD NOT BE USED WITHOUT WRITTEN PERMISSION				
			PYD	05/Jul/21					