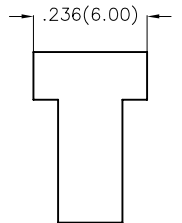
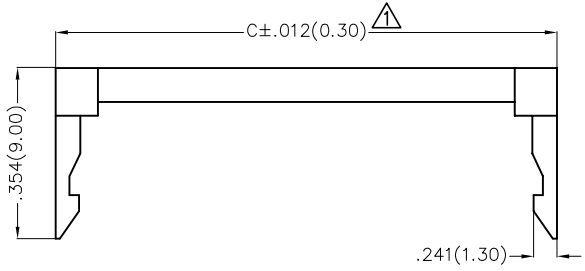


1 2 3 4 5 6 7 8

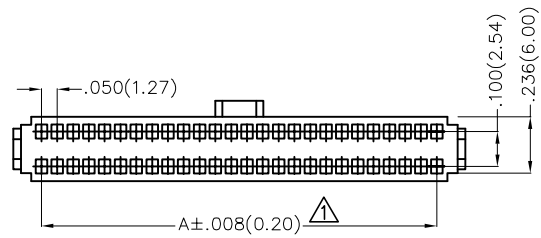
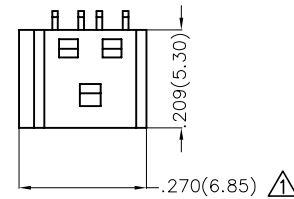
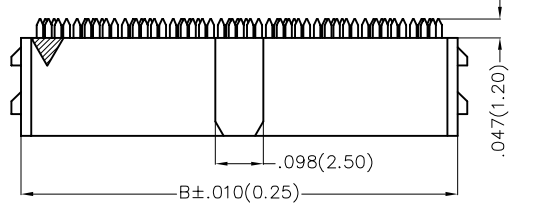
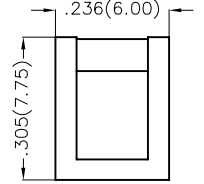
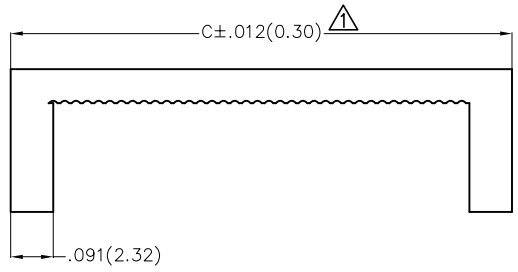
REV	LOCATIONS	DESCRIPTION	DATE	REVISER	APPD
1	△	Dimensions and tolerances changes	09/AUG/23	KATE	JOHNNY



SPECIFICATIONS

Electrical
 Current Rating: 1.0A AC(rms)/DC
 Voltage Rating: 250V AC(rms)/DC
 Contact Resistance: 30 mΩ Max
 Insulation Resistance: 1000 MΩ MIN
 Withstanding Voltage: 300V AC r.m.s
 Temperature Range—Operating: -40°C~+105°C

Material and Plating
 Housing: PBT (UL94V-0)
 Contact: Phosphor Bronze
 Plating: Selective gold in contact area, matte Ni on tail



Ordering Information

FID 127 02 — XX 3 K6 K
 1 2 3 4 5 6 7



1 Category	2 Series Number	3 Distinction No.	4 Circuits	5 Plating	6 Color—Resin	7 Packaging
FID-IDC	127—Pitch1.27mm	02	XX	3—Selective gold in contact area,matte Ni on tail	K6—Black	K—Tray

<p>THIRD ANGLE PROJECTION</p>	GENERAL TOLERANCES (UNLESS SPECIFIED)		APPROVE BY	DATE	PART NO.	ITEM NO.	<p>Building Technology Cornerstone</p>
	X.±.012(0.30)	X.±5'	FRANK	12/AUG/13	FID12702-XX3K6K	FID12702	
DESIGN UNITS Inch (metric)	X.X±.008(0.25)	.X'±2'	CHECKED BY	DATE	TITLE	REV 1 SHEET NO. 1/2	
SCALE	X.XX±.006(0.20)	.XX'±1'	DRAWN BY	DATE	THIS DRAWING CONTAINS INFORMATION THAT IS PROPRIETARY TO TXGA INDUSTRIAL ELECTRONICS(S.Z)CO.,LTD AND SHOULD NOT BE USED WITHOUT WRITTEN PERMISSION		
5:1	X.XXX±.004(0.10)	.XXX'±0.5'	JACOB	12/AUG/13			
SIZE A4							

1 2 3 4 5 6 7 8

REV	LOCATIONS	DESCRIPTION	DATE	REVISER	APPD

Circuits (n)	Part No.	Dimensions(in/mm)			Circuits (n)	Part No.	Dimensions(in/mm)		
		A	B \triangle	C \triangle			A	B \triangle	C \triangle
6	FID12702-063K6K	.100(2.54)	.229(5.81)	.343(8.71)	30	FID12702-303K6K	.700(17.78)	.829(21.05)	.943(23.95)
8	FID12702-083K6K	.150(3.81)	.279(7.08)	.393(9.98)	34	FID12702-343K6K	.800(20.32)	.929(23.59)	1.043(26.49)
10	FID12702-103K6K	.200(5.08)	.329(8.35)	.443(11.25)	40	FID12702-403K6K	.950(24.13)	1.079(27.40)	1.193(30.30)
12	FID12702-123K6K	.250(6.35)	.379(9.62)	.493(12.52)	44	FID12702-443K6K	1.050(26.67)	1.179(29.94)	1.293(32.84)
14	FID12702-143K6K	.300(7.62)	.429(10.89)	.543(13.79)	50	FID12702-503K6K	1.200(30.48)	1.329(33.75)	1.443(36.65)
16	FID12702-163K6K	.350(8.89)	.479(12.16)	.593(15.06)	60	FID12702-603K6K	1.450(36.83)	1.579(40.10)	1.693(43.00)
18	FID12702-183K6K	.400(10.16)	.529(13.43)	.643(16.33)	64	FID12702-643K6K	1.550(39.37)	1.679(42.64)	1.793(45.54)
20	FID12702-203K6K	.450(11.43)	.579(14.70)	.693(17.60)	68	FID12702-683K6K	1.650(41.91)	1.779(45.18)	1.893(48.08)
24	FID12702-243K6K	.550(13.97)	.679(17.24)	.793(20.14)	80	FID12702-803K6K	1.950(49.53)	2.079(52.80)	2.193(55.70)
26	FID12702-263K6K	.600(15.24)	.729(18.51)	.843(21.41)	100	FID12702-1003K6K	2.450(62.23)	2.579(65.50)	2.693(68.40)

 THIRD ANGLE PROJECTION	GENERAL TOLERANCES (UNLESS SPECIFIED)		APPROVE BY FRANK	DATE 12/AUG/13	PART NO. FID12702-XX3K6K	ITEM NO. FID12702	 Building Technology Cornerstone	
	X.±.012(0.30)	X.±5'	CHECKED BY CHERRY	DATE 12/AUG/13	TITLE Wire to Board(IDC Connector) Pitch 1.27mm			REV 1
	DESIGN UNITS Inch (metric)	X.XX±.008(0.25)	.X'±2'	DRAWN BY JACOB	DATE 12/AUG/13	THIS DRAWING CONTAINS INFORMATION THAT IS PROPRIETARY TO TXGA INDUSTRIAL ELECTRONICS(S.Z)CO.,LTD AND SHOULD NOT BE USED WITHOUT WRITTEN PERMISSION		
	SCALE 5:1	SIZE A4	X.XX±.006(0.20)	.XX'±1'				