

REV	LOCATIONS	DESCRIPTION	DATE	REVISER	APPD

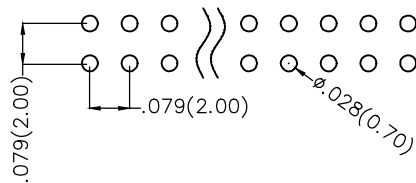
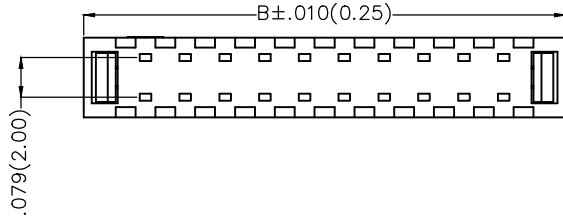
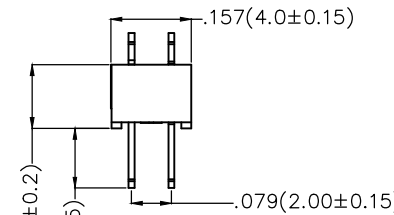
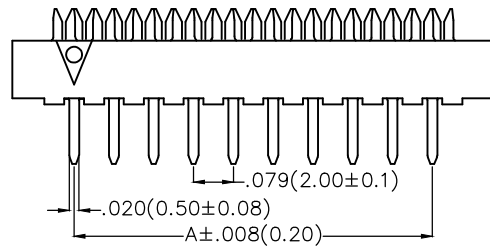
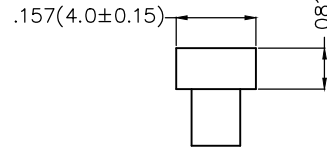
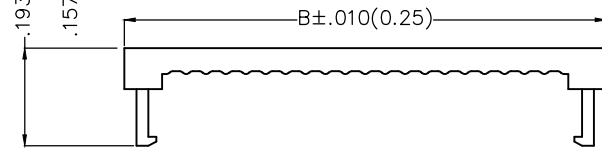
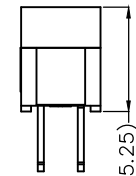
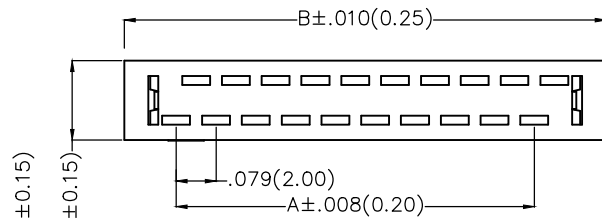
SPECIFICATIONS

Electrical

Current Rating: 1.0A AC(rms)/DC
Voltage Rating: 250V AC(rms)/DC
Contact Resistance: 20 mΩ Max
Insulation Resistance: 1000 MΩ MIN
Withstanding Voltage: 500V AC r.m.s
Temperature Range—Operating: -40°C ~ +105°C

Material and Plating

Housing: PBT (UL 94V-0)
Contact: Brass
Plating: Gold in contact area, Nickel on tail




Recommended P.C.Board Layout

Ordering Information

FID 200 03 - XX 3 K6 K
1 2 3 4 5 6 7

1 <u>Category</u> FID-IDC	2 <u>Series Number</u> 200-Pitch 2.00mm	3 <u>Distinction No.</u> 03	4 <u>Circuits</u> XX	5 <u>Plating</u> 3-Gold in contact area, Nickel on tail	6 <u>Color-Resin</u> K6-Black	7 <u>Packaging</u> K-Tray
------------------------------	--	--------------------------------	-------------------------	--	----------------------------------	------------------------------

Circuits (n)	Part No.	Dimensions(in/mm)		Circuits (n)	Part No.	Dimensions(in/mm)	
		A	B			A	B
6	FID20003-063K6K	.157(4.00)	.402(10.20)	24	FID20003-243K6K	.866(22.00)	1.110(28.20)
8	FID20003-083K6K	.236(6.00)	.480(12.20)	26	FID20003-263K6K	.945(24.00)	1.189(30.20)
10	FID20003-103K6K	.315(8.00)	.559(14.20)	28	FID20003-283K6K	1.024(26.00)	1.267(32.20)
12	FID20003-123K6K	.394(10.00)	.638(16.20)	30	FID20003-303K6K	1.102(28.00)	1.364(34.20)
14	FID20003-143K6K	.472(12.00)	.717(18.20)	34	FID20003-343K6K	1.260(32.00)	1.504(38.20)
16	FID20003-163K6K	.551(14.00)	.795(20.20)	40	FID20003-403K6K	1.496(38.00)	1.740(44.20)
18	FID20003-183K6K	.630(16.00)	.874(22.20)	44	FID20003-443K6K	1.654(42.00)	1.898(48.20)
20	FID20003-203K6K	.709(18.00)	.953(24.20)	50	FID20003-503K6K	1.890(48.00)	2.134(54.20)
22	FID20003-223K6K	.787(20.00)	1.031(26.20)				

THIRD ANGLE PROJECTION	GENERAL TOLERANCES (UNLESS SPECIFIED)		APPROVE BY FRANK	DATE 9/SEPT/13	PART NO. FID20003-XXXK6K	ITEM NO. FID20003	 Leader Of Industry	
	DESIGN UNITS Inch (metric)	X.±.012(0.30) X.X±.008(0.20) X.XX±.006(0.15) X.XXX±.004(0.10)	X.±5' .X'±2' .XX'±1' .XXX'±0.5'	CHECKED BY CHERRY	DATE 9/SEPT/13	TITLE Wire to Board(IDC Connector) Pitch 2.00mm		REV 0
SCALE 5:1	SIZE A4		DRAWN BY JACOB	DATE 9/SEPT/13	THIS DRAWING CONTAINS INFORMATION THAT IS PROPRIETARY TO TXGA INDUSTRIAL ELECTRONICS(S.Z)CO.,LTD AND SHOULD NOT BE USED WITHOUT WRITTEN PERMISSION			