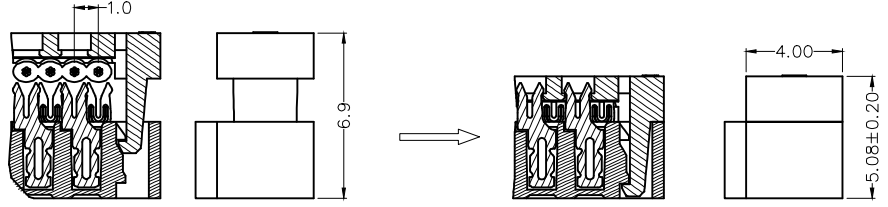
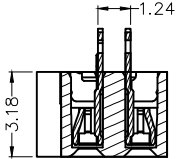
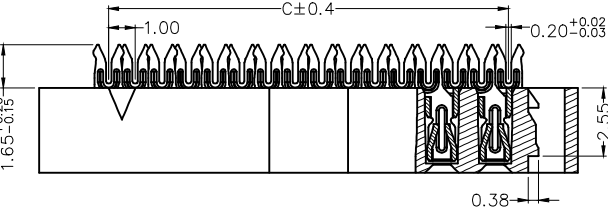
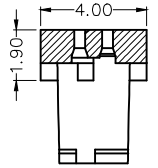
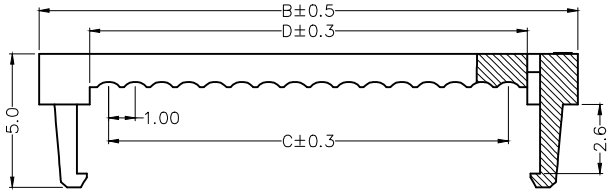
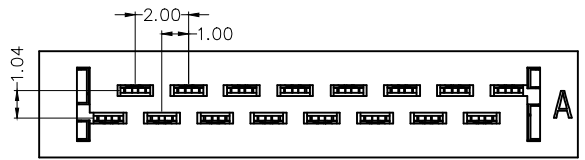


REV	LOCATIONS	DESCRIPTION	DATE	REVISER	APPD

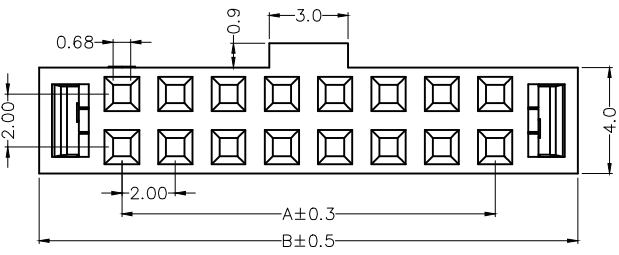
SPECIFICATIONS

Electrical
 Current Rating: 1A AC(rms)/DC
 Voltage Rating: 250V AC(rms)/DC
 Contact Resistance: 20 mΩ Max
 Insulation Resistance: 1000 MΩ Min
 Withstanding Voltage: 500V AC r.m.s
 Temperature Range—Operating: -20°C~+105°C

Material and Plating
 Housing: PBT (UL 94V-0)
 Contact: Phosphor bronze
 Plating: Selective gold plated on contact area and nickel plated on tails area



Assemble



Ordering Information

FID 200 07 — XX 5 BK B
 1 2 3 4 5 6 7

1 Category	2 Series Number	3 Distinction No.	4 Circuits	5 Plating	6 Color—Resin	7 Packaging
FID—IDC	200—Pitch2.00mm	07	XX	5—Selective gold plated on contact area and nickel plated on tails area	BK—Black	B—PE Bag

<p>THIRD ANGLE PROJECTION</p>	GENERAL TOLERANCES (UNLESS SPECIFIED)		APPROVE BY	DATE	PART NO.	ITEM NO.	<p>Leader Of Industry</p>	
	X. ±0.30	X.* ±5°	FRANK	09/MAR/20	FID20007—XX5BKB	FID20007		
	X.X ±0.20	X.X' ±2°	CHECKED BY	DATE	TITLE			
DESIGN UNITS Metric	X.XX ±0.15	X.XX' ±1°	CHERRY	09/MAR/20	Wire to Board (IDC Connector) Pitch 2.00mm		REV 0	SHEET NO. 1/2
SCALE 5:1	X.XXX ±0.10	X.XXX' ±0.5°	DRAWN BY	DATE	THIS DRAWING CONTAINS INFORMATION THAT IS PROPRIETARY TO TXGA INDUSTRIAL ELECTRONICS(S.Z)CO.,LTD AND SHOULD NOT BE USED WITHOUT WRITTEN PERMISSION			
SIZE A4			KATE	09/MAR/20				

1 2 3 4 5 6 7 8

REV	LOCATIONS	DESCRIPTION	DATE	REVISER	APPD

A

A

B

B

C

C

D

D



E

E

F

F

Circuits (n)	Part No.	Dimensions(in/mm)			
		A	B	C	D
6	FID20007-065BKB	4.00	10.20	5.00	6.40
8	FID20007-085BKB	6.00	12.20	7.00	8.40
10	FID20007-105BKB	8.00	14.20	9.00	10.40
12	FID20007-125BKB	10.00	16.20	11.00	12.40
14	FID20007-145BKB	12.00	18.20	13.00	14.40
16	FID20007-165BKB	14.00	20.20	15.00	16.40
18	FID20007-185BKB	16.00	22.20	17.00	18.40
20	FID20007-205BKB	18.00	24.20	19.00	20.40
22	FID20007-225BKB	20.00	26.20	21.00	22.40
24	FID20007-245BKB	22.00	28.20	23.00	24.40
26	FID20007-265BKB	24.00	30.20	25.00	26.40
30	FID20007-305BKB	28.00	34.20	29.00	30.40
34	FID20007-345BKB	32.00	38.20	33.00	34.40
40	FID20007-405BKB	38.00	44.20	39.00	40.40
44	FID20007-445BKB	42.00	48.20	43.00	44.40
50	FID20007-505BKB	48.00	54.20	49.00	50.40
60	FID20007-605BKB	58.00	64.20	59.00	60.40
64	FID20007-645BKB	62.00	68.20	63.00	64.40

 <p>THIRD ANGLE PROJECTION</p>	<p>GENERAL TOLERANCES (UNLESS SPECIFIED)</p>		<p>APPROVE BY FRANK</p>	<p>DATE 09/MAR/20</p>	<p>PART NO. FID20007-XX5BKB</p>	<p>ITEM NO. FID20007</p>	 <p>Leader Of Industry</p>		
	<p>X. ±0.30</p>	<p>X.* ±5°</p>	<p>CHECKED BY CHERRY</p>	<p>DATE 09/MAR/20</p>	<p>TITLE Wire to Board (IDC Connector) Pitch 2.00mm</p>			<p>REV 0</p>	<p>SHEET NO. 2/2</p>
	<p>DESIGN UNITS Metric</p>	<p>X.XX ±0.20</p>	<p>X.X* ±2°</p>	<p>DRAWN BY KATE</p>	<p>DATE 09/MAR/20</p>	<p>THIS DRAWING CONTAINS INFORMATION THAT IS PROPRIETARY TO TXGA INDUSTRIAL ELECTRONICS(S.Z)CO.,LTD AND SHOULD NOT BE USED WITHOUT WRITTEN PERMISSION</p>			
<p>SCALE 5:1</p>	<p>SIZE A4</p>	<p>X.XX ±0.15</p>	<p>X.XX* ±1°</p>	<p>X.XXX ±0.10</p>	<p>X.XXX* ±0.5°</p>				

1 2 3 4 5 6 7 8