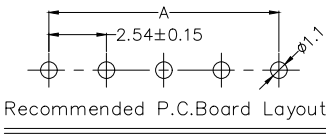
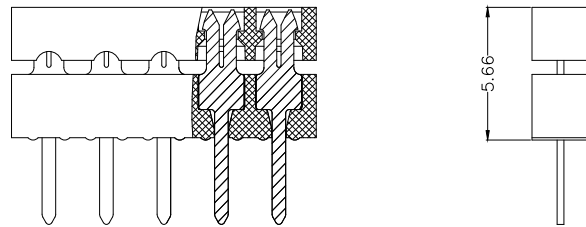
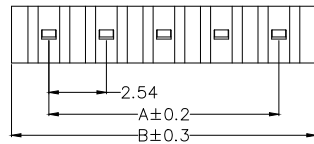
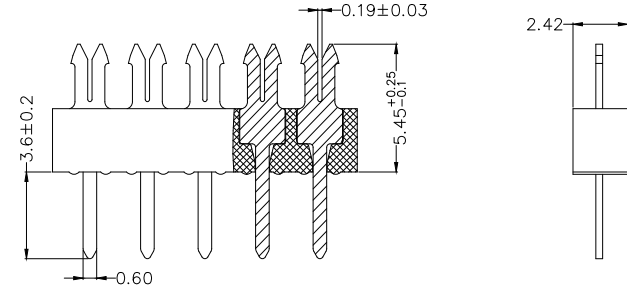
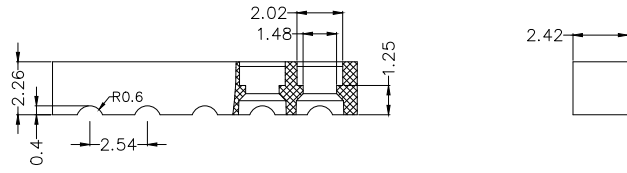


REV	LOCATIONS	DESCRIPTION	DATE	REVISER	APPD



Circuits (n)	Part NO.	Dimensions	
		A	B
04	FID25411-045BKB	7.62	10.92
05	FID25411-055BKB	10.16	13.46
06	FID25411-065BKB	12.70	16.00
07	FID25411-075BKB	15.24	18.54
08	FID25411-085BKB	17.78	21.08
09	FID25411-095BKB	20.32	23.62
10	FID25411-105BKB	22.86	26.16
11	FID25411-115BKB	25.40	28.70
12	FID25411-125BKB	27.94	31.24
13	FID25411-135BKB	30.48	33.78
14	FID25411-145BKB	33.02	36.32
15	FID25411-155BKB	35.56	38.86
16	FID25411-165BKB	38.10	41.40
17	FID25411-175BKB	40.64	43.94
18	FID25411-185BKB	43.18	46.48
19	FID25411-195BKB	45.72	49.02
20	FID25411-205BKB	48.26	51.56
21	FID25411-215BKB	50.80	54.10
22	FID25411-225BKB	53.34	56.64
23	FID25411-235BKB	55.88	59.18
24	FID25411-245BKB	58.42	61.72

SPECIFICATIONS

Electrical
 Current Rating: 1A AC/DC
 Voltage Rating: 250V AC/DC
 Contact Resistance: 20mΩ MAX
 Insulation Resistance: 1000 MΩ MIN
 Withstanding Voltage: 500V AC/Minute
 Temperature Range-Operating: -40°C ~ +105°C

Material
 Housing: PBT (UL94V-0), Black
 Terminal: Brass, Gold flash on solder area, nickel on others

Ordering Information

FID 254 11 - XX 5 BK B
 1 2 3 4 5 6 7

1 Category FID-IDC	2 Series Number 254-Pitch2.54mm	3 Distinction No. 11	4 Circuits XX	5 Plating 5-Gold on solder area, nickel on others	6 Color-Resin BK-Black	7 Packaging B-Bag
-------------------------	--------------------------------------	---------------------------	--------------------	--	-----------------------------	------------------------

 THIRD ANGLE PROJECTION DESIGN UNITS mm SCALE 5:1 SIZE A4	GENERAL TOLERANCES (UNLESS SPECIFIED)		APPROVE BY LEO	DATE 22/Dec/21	PART NO. FID25411-XX5BKB	ITEM NO. FID25411	 Building Technology Cornerstone REV 0 SHEET NO. 1/1
	X. ±0.30	X.* ±5'	CHECKED BY GISELLE	DATE 22/Dec/21	TITLE Wire to Board (IDC Connector) Pitch 2.54mm		
	X.XX ±0.15	X.XX' ±1'	DRAWN BY PYD	DATE 22/Dec/21	THIS DRAWING CONTAINS INFORMATION THAT IS PROPRIETARY TO TXGA INDUSTRIAL ELECTRONICS(S.Z)CO.,LTD AND SHOULD NOT BE USED WITHOUT WRITTEN PERMISSION		
	X.XXX ±0.10	X.XXX' ±0.5'					