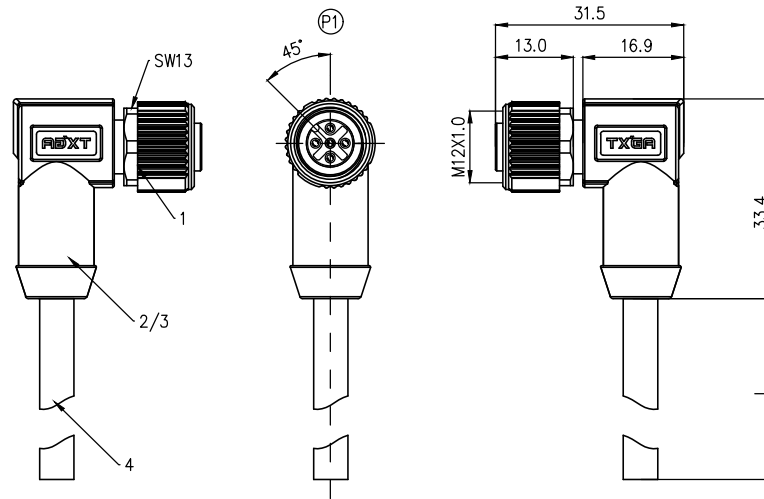


	1	2	3	4	5
	Coded	2circuits	3circuits	4circuits	5circuits
A	A-Coded				
	B-Coded				
B	D-Coded				
	VIEW A				



- Note:
1. Waterproof rate: IP68
 2. This product must meet IEC61076-2-101
 3. This product must meet 2011/65/EU ROHS compliance.
 4. Not note tolerances: ±0.20
 5. Operation temperature: -40°C~105°C
 6. Mechanical operation: > 100 mating cycles
 7. Non drag chain line

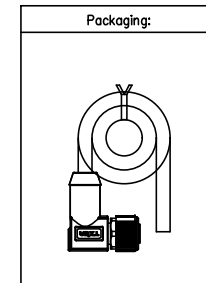


TABLE 1

L (XXXX)	00050	00100	00150	00200	...	00990
	50mm	100mm	150mm	200mm	...	990mm
	01000	01500	02000	10000	...	99900
	1M	1.5M	2M	10M	...	99.9M
Dimensions L (mm)						
Range(length)	50 to 200	201 to 500	1001 to 5000	5000 to 9000		
Tolerance(mm)	±10	±15	±25	±30		
PACKING SPECIFICATION						
Range(length)	50 to 200	201 to 1000	1001 to 5000			
	5pcs/Bag	2pcs/Bag	1pcs/Bag			

P1							
2Circuits (A/B)		3Circuits (A/B/D)		4Circuits (A/B/D)		5Circuits (A/B/D)	
Shell-Braid		Shell-Braid		Shell-Braid		Shell-Braid	
						5	Gray
		4	Black	4	Black	4	Black
3	Blue	3	Blue	3	Blue	3	Blue
				2	White	2	White
1	Brown	1	Brown	1	Brown	1	Brown
Circuits	wire color	Circuits	wire color	Circuits	wire color	Circuits	wire color

Ordering Information

FM12C 02 08 02 - X XX C XXXXX 00
 1 2 3 4 5 6 7 8

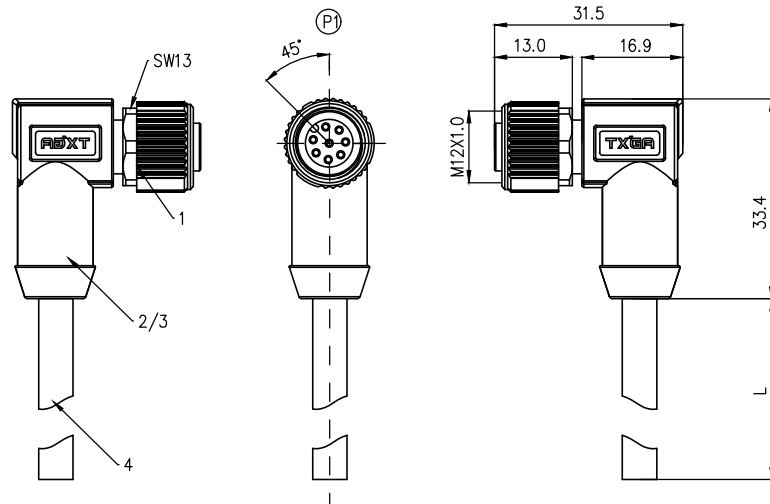
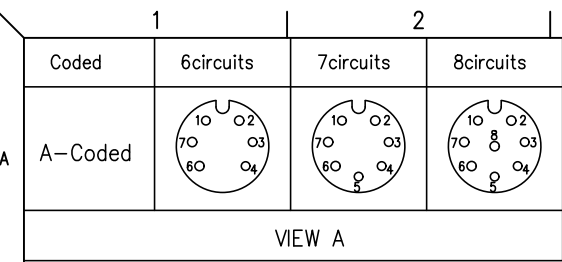
1 Cable type FM12C-M12 Cable	2 Cable category 02-Female Bent to open	3 Mounting thread 08-M12X1.0	4 Distinction num 02
---------------------------------	--	---------------------------------	-------------------------

5 Coded A-A CODED B-B CODED D-D CODED	6 Circuits 02-2Circuits 03-3Circuits ... 12-12Circuits	7 Angle-Key C-45°	8 Cable length XXXXX-(see table1)
--	--	----------------------	--------------------------------------

ELECTRICAL
1. Withstanding Voltage: DC 300V
2. Conduction Impedance: 3Ω (Max)
3. Insulation Resistance: 10MΩ (Min)

Connector product information						Cable product Information	
Circuits	Rated voltage	Rated impulse voltage	Rated current	Contact resistance	Insulation resistance	O.D	Wire Size(mm ²) AWG
2Circuits	250V	2500V	4A	≤5mΩ	≥100MΩ	4.5	0.34mm ² /22AWG
3Circuits	250V	2500V	4A	≤5mΩ	≥100MΩ	5.0	0.34mm ² /22AWG
4Circuits	250V	2500V	4A	≤5mΩ	≥100MΩ	5.5	0.34mm ² /22AWG
5Circuits	60V	1500V	4A	≤5mΩ	≥100MΩ	6.0	0.34mm ² /22AWG
4 UL 20549 (2C/3C/4C/5C)22AWG, AB, JACKET: BK, PUR							
3 PVC black adhesive outer mold: 30P							
2 PVC black rubber inner mold: 30P							
1 M12 (A/B/D)-codes (2/3/4/5)circuits female shielded plug							

THIRD ANGLE PROJECTION	GENERAL TOLERANCES (UNLESS SPECIFIED)		APPROVE BY LEO	DATE 27/Apr/24	PART NO. FM12C020802-XXXXXXX00	ITEM NO. FM12C020802	 Building Technology Cornerstone
	DESIGN UNITS METRIC		CHECKED BY GISELLE	DATE 27/Apr/24	TITLE M12 cable connector, female end right angle, shielded, angle 45°, codes A/B/D, 2~12 circuits		
	SCALE 1:1	SIZE A4	DRAWN BY King	DATE 27/Apr/24	THIS DRAWING CONTAINS INFORMATION THAT IS PROPRIETARY TO TXGA INDUSTRIAL ELECTRONICS(S.Z)CO.,LTD AND SHOULD NOT BE USED WITHOUT WRITTEN PERMISSION		
					REV 0	SHEET NO. 1/3	



- Note:
1. Waterproof rate: IP68
 2. This product must meet IEC61076-2-101
 3. This product must meet 2011/65/EU ROHS compliance.
 4. Not note tolerances: ±0.20
 5. Operation temperature: -40°C~105°C
 6. Mechanical operation: > 100 mating cycles
 7. Non drag chain line

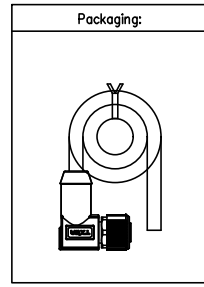


TABLE 1

L (XXXX)	00050	00100	00150	00200	...	00990
	50mm	100mm	150mm	200mm	...	990mm
	01000	01500	02000	10000	...	99900
	1M	1.5M	2M	10M	...	99.9M
Dimensions L (mm)						
Range(length)	50 to 200	201 to 500	1001 to 5000	5000 to 9000		
Tolerance(mm)	±10	±15	±25	±30		
PACKING SPECIFICATION						
Range(length)	50 to 200	201 to 1000	1001 to 5000			
	5pcs/Bag	2pcs/Bag	1pcs/Bag			

(P1)					
6Circuits		7Circuits		8Circuits	
Shell-Braid		Shell-Braid		Shell-Braid	
		7	Blue	8	Red
6	Pink	6	Pink	6	Pink
		5	Gray	5	Gray
4	Yellow	4	Yellow	4	Yellow
3	Green	3	Green	3	Green
2	Brown	2	Brown	2	Brown
1	White	1	White	1	White
Circuits	wire color	Circuits	wire color	Circuits	wire color

Connector product information						Cable product Information	
Circuits	Rated voltage	Rated impulse voltage	Rated current	Contact resistance	Insulation resistance	O.D	Wire Size(mm ²) AWG
6Circuits	30V	800V	2A	≤5mΩ	≥100MΩ	5.0	0.25mm ² /24AWG
7Circuits	30V	800V	2A	≤5mΩ	≥100MΩ	5.5	0.25mm ² /24AWG
8Circuits	30V	800V	2A	≤5mΩ	≥100MΩ	6.0	0.25mm ² /24AWG

Ordering Information

FM12C 02 08 02 - X XX C XXXXX 00
 1 2 3 4 5 6 7 8

1 Cable type: FM12C-M12 Cable
 2 Cable category: 02-Female Bent to open
 3 Mounting thread: 08-M12X1.0
 4 Distinction num: 02

5 Coded: A-A CODED, B-B CODED, D-D CODED
 6 Circuits: 02-2Circuits, 03-3Circuits, ..., 12-12Circuits
 7 Angle-Key: C-45°
 8 Cable length: XXXXX-(see table1)

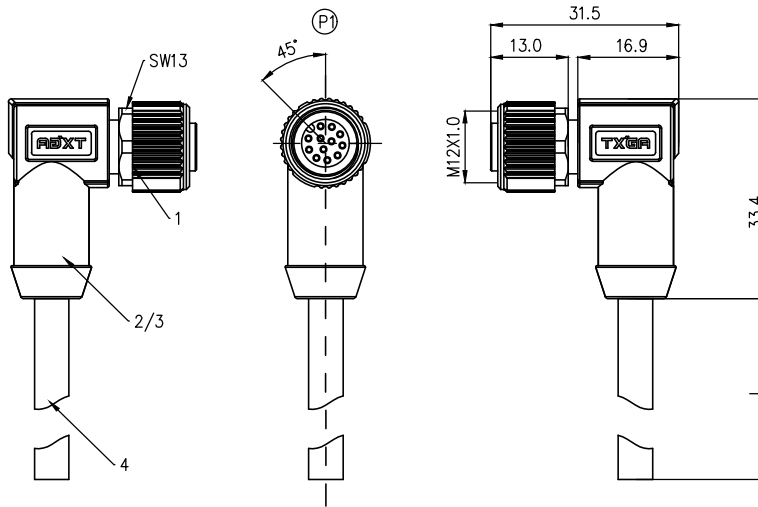
ELECTRICAL
1. Withstanding Voltage: DC 300V
2. Conduction Impedance: 3Ω (Max)
3. Insulation Resistance: 10MΩ (Min)

THIRD ANGLE PROJECTION	GENERAL TOLERANCES (UNLESS SPECIFIED)		APPROVE BY	DATE	PART NO.	ITEM NO.
	X. ±0.30	X.* ±5°	LEO	27/Apr/24	FM12C020802-XXXXXXX00	FM12C020802
	DESIGN UNITS	X.X ±0.20	CHECKED BY	DATE	TITLE	
	METRIC	X.XX ±0.15	GISELLE	27/Apr/24	M12 cable connector, female end right angle, shielded, angle 45°, codes A/B/D, 2~12 circuits	
SCALE	SIZE	X.XXX ±0.10	DRAWN BY	DATE	THIS DRAWING CONTAINS INFORMATION THAT IS PROPRIETARY TO TXGA INDUSTRIAL ELECTRONICS(S.Z)CO.,LTD AND SHOULD NOT BE USED WITHOUT WRITTEN PERMISSION	
1:1	A4	X.XXX* ±0.5°	King	27/Apr/24		

Building Technology Cornerstone	
REV 0	SHEET NO. 2/3

1	2	3	4	5	6	7	8			
Coded	9circuits	10circuits	11circuits	12circuits	REV	LOCATIONS	DESCRIPTION	DATE	REVISER	APPD
A-Coded										

VIEW A



- Note:
1. Waterproof rate: IP68
 2. This product must meet IEC61076-2-101
 3. This product must meet 2011/65/EU ROHS compliance.
 4. Not note tolerances: ±0.20
 5. Operation temperature: -40°C~105°C
 6. Mechanical operation: > 100 mating cycles
 7. Non drag chain line

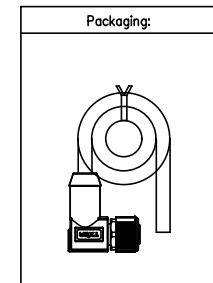


TABLE 1

L (XXXXX)	00050	00100	00150	00200	...	00990
	50mm	100mm	150mm	200mm	...	990mm
	01000	01500	02000	10000	...	99900
	1M	1.5M	2M	10M	...	99.9M
Dimensions L (mm)						
Range(length)	50 to 200	201 to 500	1001 to 5000	5000 to 9000		
Tolerance(mm)	±10	±15	±25	±30		
PACKING SPECIFICATION						
Range(length)	50 to 200	201 to 1000	1001 to 5000			
	5pcs/Bag	2pcs/Bag	1pcs/Bag			

Ordering Information

FM12C 02 08 02 - X XX C XXXXX 00
 1 2 3 4 5 6 7 8

1 Cable type FM12C-M12 Cable	2 Cable category 02-Female Bent to open	3 Mounting thread 08-M12X1.0	4 Distinction num 02
---------------------------------	--	---------------------------------	-------------------------

5 Coded A-A CODED B-B CODED D-D CODED	6 Circuits 02-2Circuits 03-3Circuits ... 12-12Circuits	7 Angle-Key C-45°	8 Cable length XXXXX-(see table1)
--	--	----------------------	--------------------------------------

ELECTRICAL
1. Withstanding Voltage: DC 300V
2. Conduction Impedance: 3Ω (Max)
3. Insulation Resistance: 10MΩ (Min)

P1							
9Circuits		10Circuits		11Circuits		12Circuits	
Shell-Braid		Shell-Braid		Shell-Braid		Shell-Braid	
				11	Orange	11	Orange
				10	Purple	10	Purple
9	Red	9	Red	9	Red	9	Red
8	Gray	8	Gray	8	Gray	8	Gray
7	Black	7	Black	7	Black	7	Black
6	Yellow	6	Yellow	6	Yellow	6	Yellow
5	Pink	5	Pink	5	Pink	5	Pink
4	Green	4	Green	4	Green	4	Green
3	White	3	White	3	White	3	White
2	Blue	2	Blue	2	Blue	2	Blue
1	Brown	1	Brown	1	Brown	1	Brown
Circuits	wire color	Circuits	wire color	Circuits	wire color	Circuits	wire color

Connector product information						Cable product Information	
Circuits	Rated voltage	Rated impulse voltage	Rated current	Contact resistance	Insulation resistance	O.D	Wire Size(mm ²) AWG
9Circuits	30V	800V	1.5A	≤5mΩ	≥100MΩ	6.0	0.14mm ² /26AWG
10Circuits	30V	800V	1.5A	≤5mΩ	≥100MΩ	6.0	0.14mm ² /26AWG
11Circuits	30V	800V	1.5A	≤5mΩ	≥100MΩ	6.5	0.14mm ² /26AWG
12Circuits	30V	800V	1.5A	≤5mΩ	≥100MΩ	6.5	0.14mm ² /26AWG
4	UL 20549 (9C/10C/11C/12C)26AWG, AB, JACKET: BK, PUR						
3	PVC black adhesive outer mold: 30P						
2	PVC black rubber inner mold: 30P						
1	M12 A-codes (9/10/11/12)circuits female shielded plug						

THIRD ANGLE PROJECTION	GENERAL TOLERANCES (UNLESS SPECIFIED)		APPROVE BY	DATE	PART NO.	ITEM NO.	 Building Technology Cornerstone
	X. ±0.30	X.* ±5°	CHECKED BY	DATE	FM12C020802-XXXXXXX00	FM12C020802	
	DESIGN UNITS METRIC	X.X ±0.20	X.XX' ±2°	GISELLE	27/Apr/24	TITLE	
SCALE 1:1	SIZE A4	X.XX ±0.15	X.XX' ±1°	DRAWN BY	DATE	THIS DRAWING CONTAINS INFORMATION THAT IS PROPRIETARY TO TXGA INDUSTRIAL ELECTRONICS(S.Z)CO.,LTD AND SHOULD NOT BE USED WITHOUT WRITTEN PERMISSION	
		X.XXX ±0.10	X.XXX' ±0.5°	King	27/Apr/24		