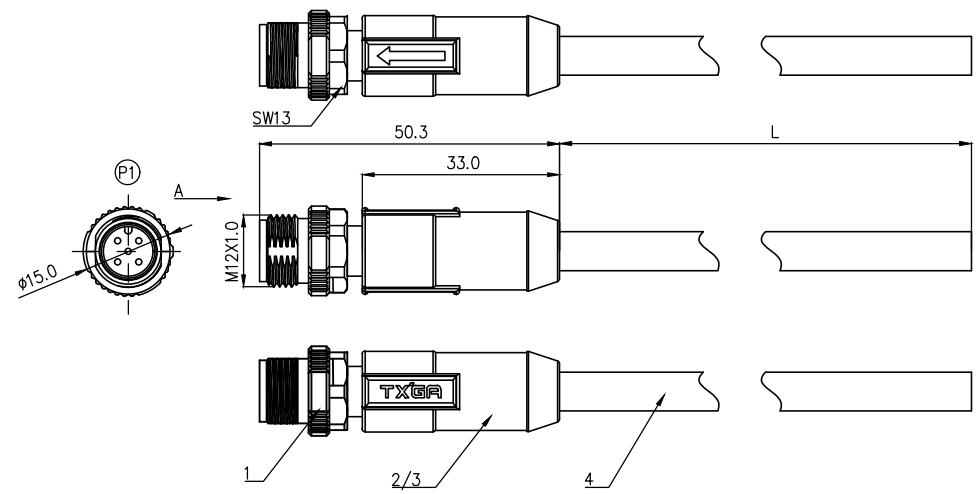


	1	2	3	4	5
	Coded	2circuits	3circuits	4circuits	5circuits
A	A-Coded				
	B-Coded				
B	D-Coded				
	VIEW A				



- Note:
1. Waterproof rate: IP68
 2. This product must meet IEC61076-2-101
 3. This product must meet 2011/65/EU ROHS compliance.
 4. Not note tolerances: ±0.20
 5. Operation temperature: -40°C~105°C
 6. Mechanical operation: > 100 mating cycles
 7. Non drag chain line

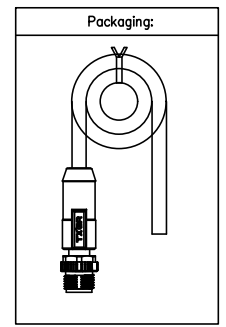


TABLE 1

L (XXXXX)	00050	00100	00150	00200	...	00990
	50mm	100mm	150mm	200mm	...	990mm
	01000	01500	02000	10000	...	99900
	1M	1.5M	2M	10M	...	99.9M
Dimensions L (mm)						
Range(length)	50 to 200	201 to 500	1001 to 5000	5000 to 9000		
Tolerance(mm)	±10	±15	±25	±30		
PACKING SPECIFICATION						
Range(length)	50 to 200	201 to 1000	1001 to 5000			
	5pcs/Bag	2pcs/Bag	1pcs/Bag			

(P1)											
2Circuits		3Circuits			4Circuits			5Circuits			
A	B	A	B	D	A	B	D	A	B	D	
Shell-Braid		Shell-Braid			Shell-Braid			Shell-Braid			
		4			4			5			
		Black			Black			Gray			
3		3			2			3			
Blue		Blue			White			Blue			
1		1			1			1			
Brown		Brown			Brown			Brown			
Circuits	wire color	Circuits	wire color	Circuits	wire color	Circuits	wire color	Circuits	wire color	Circuits	wire color

Connector product information					Cable product Information	
Circuits	Rated voltage	Rated impulse voltage	Rated current	Insulation resistance	O.D	Wire Size(mm ²) AWG
2Circuits	250V	2500V	4A	≥100MΩ	4.5	0.34mm ² /22AWG
3Circuits	250V	2500V	4A	≥100MΩ	5.0	0.34mm ² /22AWG
4Circuits	250V	2500V	4A	≥100MΩ	5.5	0.34mm ² /22AWG
5Circuits	60V	1500V	4A	≥100MΩ	6.0	0.34mm ² /22AWG

Ordering Information

FM12C 03 08 01 - X XX E XXXXX 00
 1 2 3 4 5 6 7 8

1 Cable type: FM12C-M12 Cable
 2 Cable category: 03-Male Straight to open
 3 Mounting thread: 08-M12X1.0
 4 Distinction num.: 01

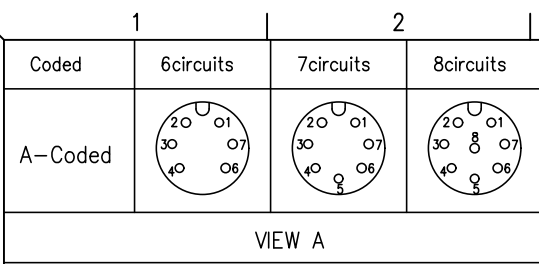
5 Coded: A-A CODED, B-B CODED, D-D CODED, ...
 6 Circuits: 02-2Circuits, 03-3Circuits, ...
 7 Angle-Key: E-0°
 8 Cable length: XXXXX-(see table1)
 12-12Circuits

ELECTRICAL
1. Withstanding Voltage: DC 300V
2. Conduction Impedance: 3Ω (Max)
3. Insulation Resistance: 10MΩ (Min)

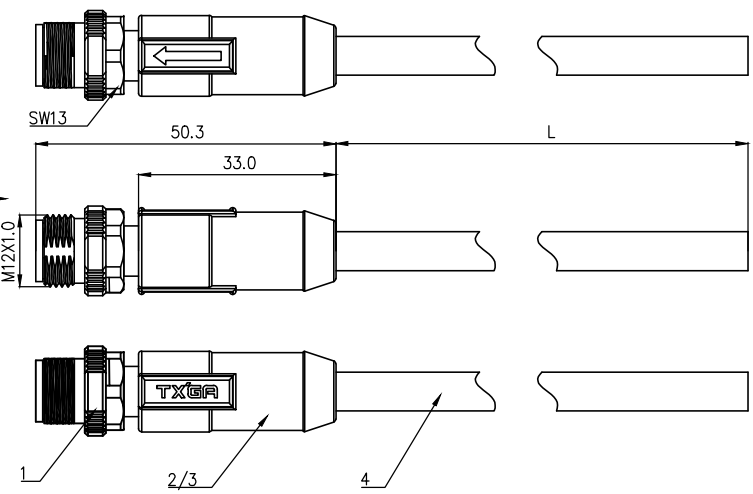
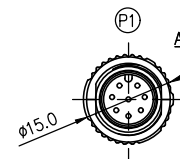
THIRD ANGLE PROJECTION	GENERAL TOLERANCES (UNLESS SPECIFIED)		APPROVE BY	DATE
	X. ±0.30	X.* ±5°	LEO	27/Apr/24
	DESIGN UNITS METRIC		CHECKED BY	DATE
	X.X ±0.20	X.X* ±2°	GISELLE	27/Apr/24
SCALE 1:1	SIZE A4	X.XX ±0.15	X.XX* ±1°	DRAWN BY
		X.XXX ±0.10	X.XXX* ±0.5°	King
				DATE
				27/Apr/24

PART NO.	ITEM NO.	
FM12C030801-XXXEXXX00	FM12C030801	
TITLE		Building Technology Cornerstone
M12 cable connector, male straight end, shielded, PUR, codes A/B/D, 2~12 circuits		REV 0 SHEET NO. 1/3
THIS DRAWING CONTAINS INFORMATION THAT IS PROPRIETARY TO TXGA INDUSTRIAL ELECTRONICS(S.Z)CO.,LTD AND SHOULD NOT BE USED WITHOUT WRITTEN PERMISSION		

- 4 UL 20549 (2C/3C/4C/5C)22AWG, AB, JACKET: BK, PUR
- 3 Overmold: PVC black 30P
- 2 Innermold: PVC black 30P
- 1 M12 (A/B/D)-codes (2/3/4/5)circuits male shielded plug



VIEW A



- Note:
1. Waterproof rate: IP68
 2. This product must meet IEC61076-2-101
 3. This product must meet 2011/65/EU ROHS compliance.
 4. Not note tolerances: ± 0.20
 5. Operation temperature: $-40^{\circ}\text{C} \sim 105^{\circ}\text{C}$
 6. Mechanical operation: > 100 mating cycles
 7. Non drag chain line

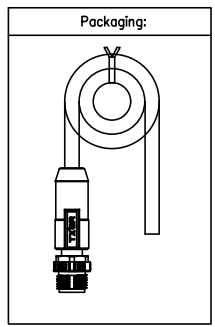


TABLE 1

L (XXXXX)	00050	00100	00150	00200	...	00990
	50mm	100mm	150mm	200mm	...	990mm
	01000	01500	02000	10000	...	99900
	1M	1.5M	2M	10M	...	99.9M
Dimensions L (mm)						
Range(length)	50 to 200	201 to 500	1001 to 5000	5000 to 9000		
Tolerance(mm)	± 10	± 15	± 25	± 30		
PACKING SPECIFICATION						
Range(length)	50 to 200	201 to 1000	1001 to 5000			
	5pcs/Bag	2pcs/Bag	1pcs/Bag			

(P1)					
6Circuits		7Circuits		8Circuits	
Shell-Braid		Shell-Braid		Shell-Braid	
7	Blue	7	Blue	8	Red
6	Pink	6	Pink	6	Pink
		5	Gray	5	Gray
4	Yellow	4	Yellow	4	Yellow
3	Green	3	Green	3	Green
2	Brown	2	Brown	2	Brown
1	White	1	White	1	White
Circuits	wire color	Circuits	wire color	Circuits	wire color

Ordering Information

FM12C 03 08 01 - X XX E XXXXX 00
 1 2 3 4 5 6 7 8

1 | Cable type
FM12C-M12 Cable

2 | Cable category
03-Male Straight to open

3 | Mounting thread
08-M12X1.0

4 | Distinction num.
01

5 | Coded
A-A CODED
B-B CODED
D-D CODED

6 | Circuits
02-2Circuits
03-3Circuits
...
12-12Circuits

7 | Angle-Key
E-0°

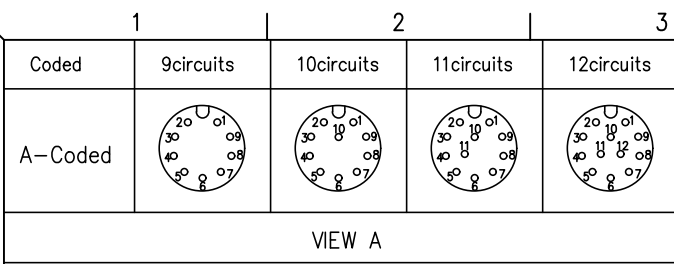
8 | Cable length
XXXXX-(see table1)

ELECTRICAL	
1. Withstanding Voltage: DC 300V	
2. Conduction Impedance: 3Ω (Max)	
3. Insulation Resistance: $10M\Omega$ (Min)	

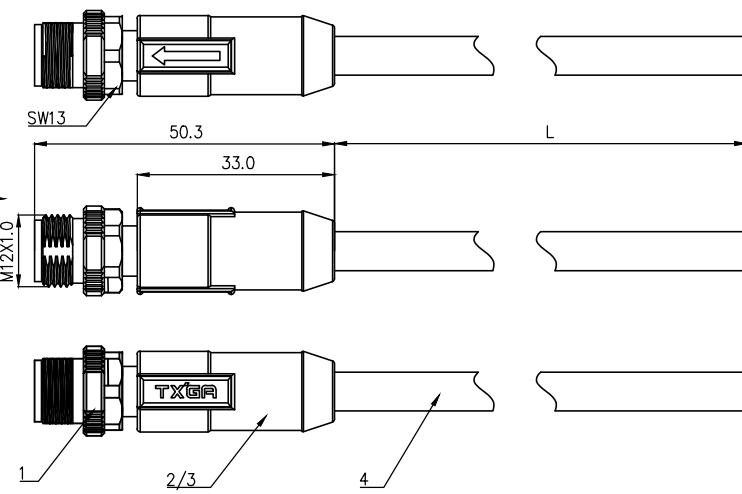
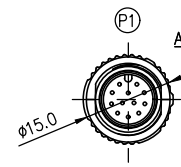
Connector product information					Cable product Information	
Circuits	Rated voltage	Rated impulse voltage	Rated current	Insulation resistance	O.D	Wire Size(mm ²) AWG
6Circuits	30V	800V	2A	$\geq 100M\Omega$	5.0	0.25mm ² /24AWG
7Circuits	30V	800V	2A	$\geq 100M\Omega$	5.5	0.25mm ² /24AWG
8Circuits	30V	800V	2A	$\geq 100M\Omega$	6.0	0.25mm ² /24AWG

4	UL 20549 (6C/7C/8C)24AWG, AB, JACKET: BK, PUR
3	Overmold: PVC black 30P
2	Innermold: PVC black 30P
1	M12 A-codes (6/7/8)circuits male shielded plug

 THIRD ANGLE PROJECTION DESIGN UNITS METRIC SCALE 1:1 SIZE A4	GENERAL TOLERANCES (UNLESS SPECIFIED)		APPROVE BY LEO	DATE 27/Apr/24	PART NO. FM12C030801-XXXEXXX00	ITEM NO. FM12C030801	 Building Technology Cornerstone REV 0 SHEET NO. 2/3
	X. ± 0.30	X.* $\pm 5^{\circ}$	CHECKED BY GISELLE	DATE 27/Apr/24	TITLE M12 cable connector, male straight end, shielded, PUR, codes A/B/D, 2~12 circuits		
	X.X ± 0.20	X.XX $\pm 2^{\circ}$	DRAWN BY King	DATE 27/Apr/24	THIS DRAWING CONTAINS INFORMATION THAT IS PROPRIETARY TO TXGA INDUSTRIAL ELECTRONICS(S.Z)CO.,LTD AND SHOULD NOT BE USED WITHOUT WRITTEN PERMISSION		



VIEW A



- Note:
1. Waterproof rate: IP68
 2. This product must meet IEC61076-2-101
 3. This product must meet 2011/65/EU ROHS compliance.
 4. Not note tolerances: ± 0.20
 5. Operation temperature: $-40^{\circ}\text{C} \sim 105^{\circ}\text{C}$
 6. Mechanical operation: > 100 mating cycles
 7. Non drag chain line

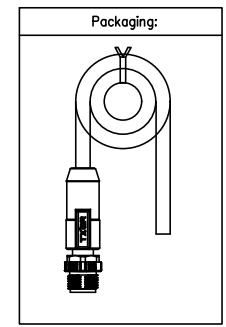


TABLE 1

L (XXXXX)	00050	00100	00150	00200	...	00990
	50mm	100mm	150mm	200mm	...	990mm
	01000	01500	02000	10000	...	99900
	1M	1.5M	2M	10M	...	99.9M
Dimensions L (mm)						
Range(length)	50 to 200	201 to 500	1001 to 5000	5000 to 9000		
Tolerance(mm)	± 10	± 15	± 25	± 30		
PACKING SPECIFICATION						
Range(length)	50 to 200	201 to 1000	1001 to 5000			
	5pcs/Bag	2pcs/Bag	1pcs/Bag			

P1							
9Circuits		10Circuits		11Circuits		12Circuits	
Shell-Braid		Shell-Braid		Shell-Braid		Shell-Braid	
				11	Orange	11	Cyan
9	Red	9	Purple	9	Purple	9	Purple
8	Gray	8	Red	8	Red	8	Red
7	Black	7	Gray	7	Gray	7	Gray
6	Black	6	Black	6	Black	6	Black
5	Yellow	5	Yellow	5	Yellow	5	Yellow
4	Pink	4	Pink	4	Pink	4	Pink
3	Green	3	Green	3	Green	3	Green
2	White	2	White	2	White	2	White
1	Blue	1	Blue	1	Blue	1	Blue
1	Brown	1	Brown	1	Brown	1	Brown
Circuits	wire color	Circuits	wire color	Circuits	wire color	Circuits	wire color

Ordering Information

FM12C03 08 01 - X XX E XXXXX 00
 1 2 3 4 5 6 7 8

1 | Cable type
FM12C-M12 Cable

2 | Cable category
03-Male Straight to open

3 | Mounting thread
08-M12X1.0

4 | Distinction num.
01

5 | Coded
A-A CODED
B-B CODED
D-D CODED

6 | Circuits
02-2Circuits
03-3Circuits
...
12-12Circuits

7 | Angle-Key
E-0°

8 | Cable length
XXXXX-(see table1)

ELECTRICAL		
1. Withstanding Voltage: DC 300V		
2. Conduction Impedance: 3Ω (Max)		
3. Insulation Resistance: $10M\Omega$ (Min)		

Connector product information					Cable product Information	
Circuits	Rated voltage	Rated impulse voltage	Rated current	Insulation resistance	O.D	Wire Size(mm ²) AWG
9Circuits	30V	800V	1.5A	$\geq 100M\Omega$	6.0	0.14mm ² /26AWG
10Circuits	30V	800V	1.5A	$\geq 100M\Omega$	6.0	0.14mm ² /26AWG
11Circuits	30V	800V	1.5A	$\geq 100M\Omega$	6.5	0.14mm ² /26AWG
12Circuits	30V	800V	1.5A	$\geq 100M\Omega$	6.5	0.14mm ² /26AWG

4	UL 20549 (9C/10C/11C/12C)26AWG, AB, JACKET: BK, PUR
3	Overmold: PVC black 30P
2	Innermold: PVC black 30P
1	M12 A-codes (9/10/11/12)circuits male shielded plug

 THIRD ANGLE PROJECTION DESIGN UNITS METRIC SCALE 1:1 SIZE A4	GENERAL TOLERANCES (UNLESS SPECIFIED)		APPROVE BY LEO	DATE 27/Apr/24	PART NO. FM12C030801-XXXEXXX00	ITEM NO. FM12C030801	 Building Technology Cornerstone REV 0 SHEET NO. 3/3
	X. ± 0.30	X.* $\pm 5^{\circ}$	CHECKED BY GISELLE	DATE 27/Apr/24	TITLE M12 cable connector, male straight end, shielded, PUR, codes A/B/D, 2~12 circuits		
	X.X ± 0.20	X.X* $\pm 2^{\circ}$	DRAWN BY King	DATE 27/Apr/24	THIS DRAWING CONTAINS INFORMATION THAT IS PROPRIETARY TO TXGA INDUSTRIAL ELECTRONICS(S.Z)CO.,LTD AND SHOULD NOT BE USED WITHOUT WRITTEN PERMISSION		