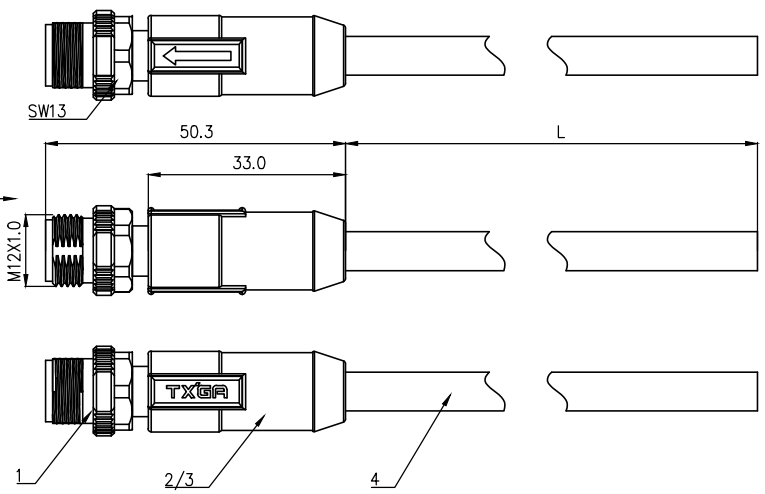
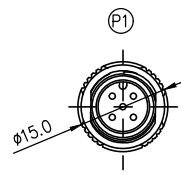


	1	2	3	4	5
	Coded	2circuits	3circuits	4circuits	5circuits
A	A-Coded				
	B-Coded				
B	D-Coded				
	VIEW A				



- Note:
1. Waterproof rate: IP68
 2. This product must meet IEC61076-2-101
 3. This product must meet 2011/65/EU ROHS compliance.
 4. Not note tolerances: ±0.20
 5. Operation temperature: -40°C~105°C
 6. Mechanical operation: > 100 mating cycles
 7. Non drag chain line

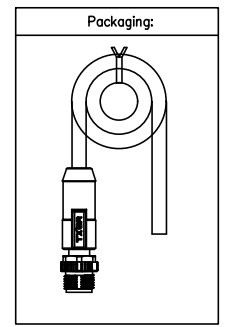


TABLE 1

L (XXXXX)	00050	00100	00150	00200	...	00990
	50mm	100mm	150mm	200mm	...	990mm
	01000	01500	02000	10000	...	99900
	1M	1.5M	2M	10M	...	99.9M
Dimensions L (mm)						
Range(length)	50 to 200	201 to 500	1001 to 5000	5000 to 9000		
Tolerance(mm)	±10	±15	±25	±30		
PACKING SPECIFICATION						
Range(length)	50 to 200	201 to 1000	1001 to 5000			
	5pcs/Bag	2pcs/Bag	1pcs/Bag			

(P1)											
2Circuits		3Circuits			4Circuits			5Circuits			
A	B	A	B	D	A	B	D	A	B	D	
								5	Gray		
		4	Black		4	Black		4	Black		
3	Blue	3	Blue		3	Blue		3	Blue		
					2	White		2	White		
1	Brown	1	Brown		1	Brown		1	Brown		
Circuits	wire color	Circuits	wire color		Circuits	wire color		Circuits	wire color		

Connector product information					Cable product Information	
Circuits	Rated voltage	Rated impulse voltage	Rated current	Insulation resistance	O.D	Wire Size(mm ²) AWG
2Circuits	250V	2500V	4A	≥100MΩ	4.0	0.34mm ² /22AWG
3Circuits	250V	2500V	4A	≥100MΩ	4.5	0.34mm ² /22AWG
4Circuits	250V	2500V	4A	≥100MΩ	5.0	0.34mm ² /22AWG
5Circuits	60V	1500V	4A	≥100MΩ	5.5	0.34mm ² /22AWG

Ordering Information

FM12C 03 08 05 - X XX E XXXXX 00
 1 2 3 4 5 6 7 8

1 Cable type FM12C-M12 Cable	2 Cable category 03-Male Straight to open	3 Mounting thread 08-M12X1.0	4 Distinction num 05
---------------------------------	--	---------------------------------	-------------------------

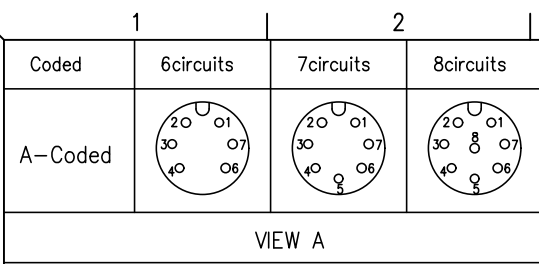
5 Coded A-A CODED B-B CODED D-D CODED	6 Circuits 02-2Circuits 03-3Circuits ... 12-12Circuits	7 Angle-Key E-0°	8 Cable length XXXXX-(see table1)
--	--	---------------------	--------------------------------------

ELECTRICAL	
1. Withstanding Voltage: DC 300V	
2. Conduction Impedance: 3Ω (Max)	
3. Insulation Resistance: 10MΩ (Min)	

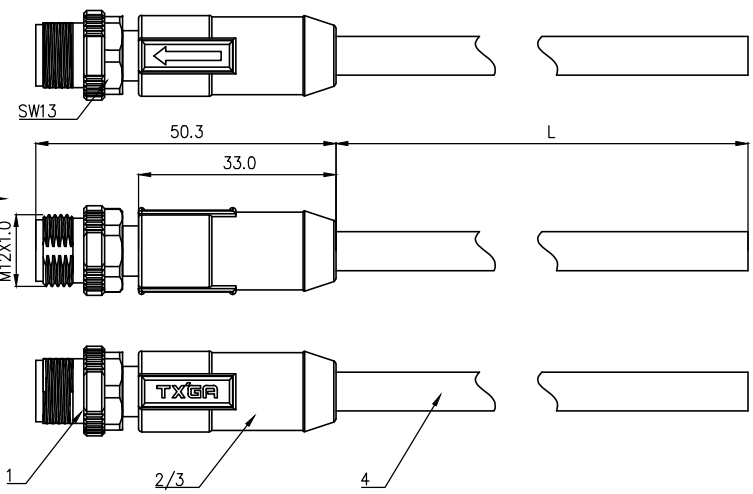
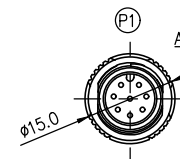
THIRD ANGLE PROJECTION	GENERAL TOLERANCES (UNLESS SPECIFIED)		APPROVE BY	DATE	PART NO.	ITEM NO.
	X. ±0.30	X.* ±5°	LEO	27/Apr/24	FM12C030805-XXXEXXXXX00	FM12C030805
	DESIGN UNITS	X.X ±0.20	CHECKED BY	DATE	TITLE	
	METRIC	X.XX ±0.15	GISELLE	27/Apr/24	M12 cable connector, male straight end, unshielded, PUR, codes A/B/D, 2~12 circuits	
SCALE	SIZE	X.XXX ±0.10	DRAWN BY	DATE	THIS DRAWING CONTAINS INFORMATION THAT IS PROPRIETARY TO TXGA INDUSTRIAL ELECTRONICS(S.Z)CO.,LTD AND SHOULD NOT BE USED WITHOUT WRITTEN PERMISSION	
1:1	A4	X.XXX* ±0.5°	King	27/Apr/24		

4	UL 20549 (2C/3C/4C/5C)22AWG, JACKET: BK, PUR
3	Overmold: PVC black 30P
2	Innermold: PVC black 30P
1	M12 (A/B/D)-codes (2/3/4/5)circuits male unshielded plug

TXGA
 Building Technology Cornerstone
 REV 0 SHEET NO. 1/3



VIEW A



- Note:
1. Waterproof rate: IP68
 2. This product must meet IEC61076-2-101
 3. This product must meet 2011/65/EU ROHS compliance.
 4. Not note tolerances: ±0.20
 5. Operation temperature: -40°C~105°C
 6. Mechanical operation: > 100 mating cycles
 7. Non drag chain line

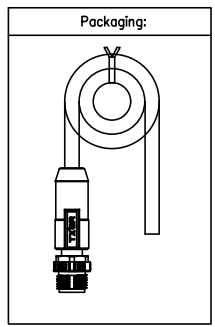


TABLE 1

L (XXXXX)	00050	00100	00150	00200	...	00990
	50mm	100mm	150mm	200mm	...	990mm
	01000	01500	02000	10000	...	99900
	1M	1.5M	2M	10M	...	99.9M
Dimensions L (mm)						
Range(length)	50 to 200	201 to 500	1001 to 5000	5000 to 9000		
Tolerance(mm)	±10	±15	±25	±30		
PACKING SPECIFICATION						
Range(length)	50 to 200	201 to 1000	1001 to 5000			
	5pcs/Bag	2pcs/Bag	1pcs/Bag			

①					
6Circuits		7Circuits		8Circuits	
7	Blue	7	Blue	7	Red
6	Pink	6	Pink	6	Pink
		5	Gray	5	Gray
4	Yellow	4	Yellow	4	Yellow
3	Green	3	Green	3	Green
2	Brown	2	Brown	2	Brown
1	White	1	White	1	White
Circuits	wire color	Circuits	wire color	Circuits	wire color

Ordering Information

FM12C 03 08 05 - X XX E XXXXX 00
 1 2 3 4 5 6 7 8

1 Cable type: FM12C-M12 Cable
 2 Cable category: 03-Male Straight to open
 3 Mounting thread: 08-M12X1.0
 4 Distinction num: 05

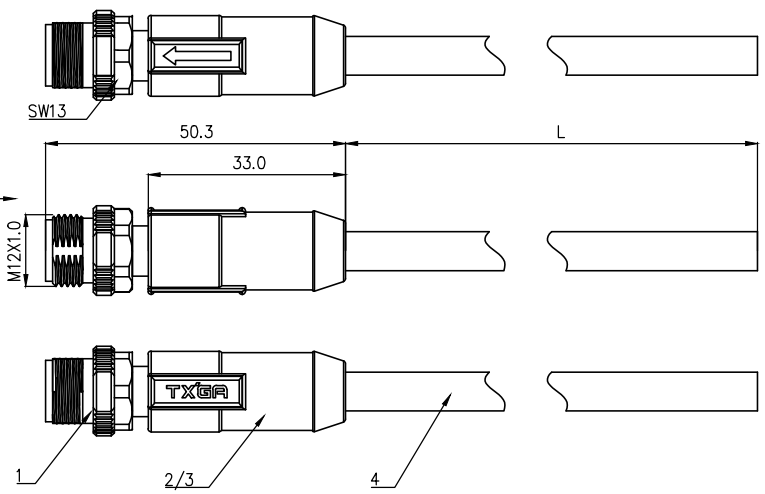
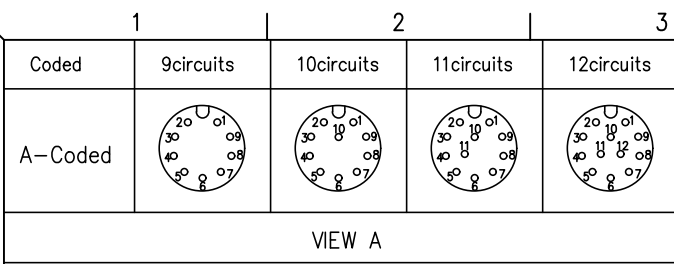
5 Coded: A-A CODED, B-B CODED, D-D CODED
 6 Circuits: 02-2Circuits, 03-3Circuits, ..., 12-12Circuits
 7 Angle-Key: E-0°
 8 Cable length: XXXXX-(see table1)

ELECTRICAL
1. Withstanding Voltage: DC 300V
2. Conduction Impedance: 3Ω (Max)
3. Insulation Resistance: 10MΩ (Min)

Connector product information				Cable product Information		
Circuits	Rated voltage	Rated impulse voltage	Rated current	Insulation resistance	O.D	Wire Size(mm ²) AWG
6Circuits	30V	800V	2A	≥100MΩ	4.5	0.25mm ² /24AWG
7Circuits	30V	800V	2A	≥100MΩ	5.0	0.25mm ² /24AWG
8Circuits	30V	800V	2A	≥100MΩ	5.5	0.25mm ² /24AWG

4	UL 20549 (6C/7C/8C)24AWG, JACKET: BK, PUR
3	Overmold: PVC black 30P
2	Innermold: PVC black 30P
1	M12 A-codes (6/7/8)circuits male unshielded plug

 THIRD ANGLE PROJECTION DESIGN UNITS METRIC SCALE 1:1 SIZE A4	GENERAL TOLERANCES (UNLESS SPECIFIED)		APPROVE BY	DATE	PART NO.	ITEM NO.	 Building Technology Cornerstone REV 0 SHEET NO. 2/3
	X. ±0.30	X.* ±5°	LEO	27/Apr/24	FM12C030805-XXXEXXXXX00	FM12C030805	
	X.X ±0.20	X.X* ±2°	CHECKED BY	DATE	TITLE		
X.XX ±0.15	X.XX* ±1°	GISELLE	27/Apr/24	M12 cable connector, male straight end, unshielded, PUR, codes A/B/D, 2~12 circuits			
X.XXX ±0.10	X.XXX* ±0.5°	DRAWN BY	DATE	THIS DRAWING CONTAINS INFORMATION THAT IS PROPRIETARY TO TXGA INDUSTRIAL ELECTRONICS(S.Z)CO.,LTD AND SHOULD NOT BE USED WITHOUT WRITTEN PERMISSION			
		King	27/Apr/24				



REV	LOCATIONS	DESCRIPTION	DATE	REVISER	APPD

- Note:
1. Waterproof rate: IP68
 2. This product must meet IEC61076-2-101
 3. This product must meet 2011/65/EU ROHS compliance.
 4. Not note tolerances: ±0.20
 5. Operation temperature: -40°C~105°C
 6. Mechanical operation: > 100 mating cycles
 7. Non drag chain line

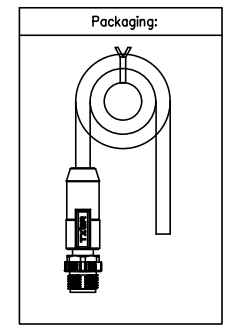


TABLE 1

L (XXXXX)	00050	00100	00150	00200	...	00990
	50mm	100mm	150mm	200mm	...	990mm
	01000	01500	02000	10000	...	99900
	1M	1.5M	2M	10M	...	99.9M
Dimensions L (mm)						
Range(length)	50 to 200	201 to 500	1001 to 5000	5000 to 9000		
Tolerance(mm)	±10	±15	±25	±30		
PACKING SPECIFICATION						
Range(length)	50 to 200	201 to 1000	1001 to 5000			
	5pcs/Bag	2pcs/Bag	1pcs/Bag			

P1							
9Circuits		10Circuits		11Circuits		12Circuits	
				11	Orange	11	Cyan
9	Red	9	Red	9	Red	9	Red
8	Gray	8	Gray	8	Gray	8	Gray
7	Black	7	Black	7	Black	7	Black
6	Yellow	6	Yellow	6	Yellow	6	Yellow
5	Pink	5	Pink	5	Pink	5	Pink
4	Green	4	Green	4	Green	4	Green
3	White	3	White	3	White	3	White
2	Blue	2	Blue	2	Blue	2	Blue
1	Brown	1	Brown	1	Brown	1	Brown
Circuits	wire color	Circuits	wire color	Circuits	wire color	Circuits	wire color

Ordering Information

FM12C03 08 05 - X XX E XXXXX 00
 1 2 3 4 5 6 7 8

1 Cable type FM12C-M12 Cable	2 Cable category 03-Male Straight to open	3 Mounting thread 08-M12X1.0	4 Distinction num 05
---------------------------------	--	---------------------------------	-------------------------

5 Coded A-A CODED B-B CODED D-D CODED	6 Circuits 02-2Circuits 03-3Circuits ... 12-12Circuits	7 Angle-Key E-0°	8 Cable length XXXXX-(see table1)
--	--	---------------------	--------------------------------------

ELECTRICAL		
1. Withstanding Voltage:DC 300V		
2. Conduction Impedance: 3Ω (Max)		
3. Insulation Resistance: 10MΩ(Min)		

Connector product information					Cable product Information	
Circuits	Rated voltage	Rated impulse voltage	Rated current	Insulation resistance	O.D	Wire Size(mm ²) AWG
9Circuits	30V	800V	1.5A	≥100MΩ	5.5	0.14mm ² /26AWG
10Circuits	30V	800V	1.5A	≥100MΩ	5.5	0.14mm ² /26AWG
11Circuits	30V	800V	1.5A	≥100MΩ	6.0	0.14mm ² /26AWG
12Circuits	30V	800V	1.5A	≥100MΩ	6.0	0.14mm ² /26AWG

4	UL 20549 (9C/10C/11C/12C)26AWG, JACKET:BK, PUR
3	Overmold:PVC black 30P
2	Innermold:PVC black 30P
1	M12 A-codes (9/10/11/12)circuits male unshielded plug

 THIRD ANGLE PROJECTION DESIGN UNITS METRIC SCALE 1:1 SIZE A4	GENERAL TOLERANCES (UNLESS SPECIFIED)		APPROVE BY LEO	DATE 27/Apr/24	PART NO. FM12C030805-XXXEXXXXX00	ITEM NO. FM12C030805	 Building Technology Cornerstone REV 0 SHEET NO. 3/3
	X. ±0.30	X.* ±5°	CHECKED BY GISELLE	DATE 27/Apr/24	TITLE M12 cable connector, male straight end, unshielded, PUR, codes A/B/D, 2~12 circuits		
	X.X ±0.20	X.X* ±2°	DRAWN BY King	DATE 27/Apr/24	THIS DRAWING CONTAINS INFORMATION THAT IS PROPRIETARY TO TXGA INDUSTRIAL ELECTRONICS(S.Z)CO.,LTD AND SHOULD NOT BE USED WITHOUT WRITTEN PERMISSION		
	X.XX ±0.15	X.XX* ±1°					
X.XXX ±0.10	X.XXX* ±0.5°						