

	1	2	3	4	5
	Coded	2circuits	3circuits	4circuits	5circuits
A	A-Coded				
	B-Coded				
B	D-Coded				
	VIEW A				

- Note:
1. Waterproof rate: IP68
 2. This product must meet IEC61076-2-101
 3. This product must meet 2011/65/EU ROHS compliance.
 4. Not note tolerances: ±0.20
 5. Operation temperature: -40°C~105°C
 6. Mechanical operation: > 100 mating cycles
 7. Non drag chain line

TABLE 1

L (XXXXX)	00050	00100	00150	00200	...	00990
	50mm	100mm	150mm	200mm	...	990mm
	01000	01500	02000	10000	...	99900
	1M	1.5M	2M	10M	...	99.9M
Dimensions L (mm)						
Range(length)	50 to 200	201 to 500	1001 to 5000	5000 to 9000		
Tolerance(mm)	±10	±15	±25	±30		
PACKING SPECIFICATION						
Range(length)	50 to 200	201 to 1000	1001 to 5000			
	5pcs/Bag	2pcs/Bag	1pcs/Bag			

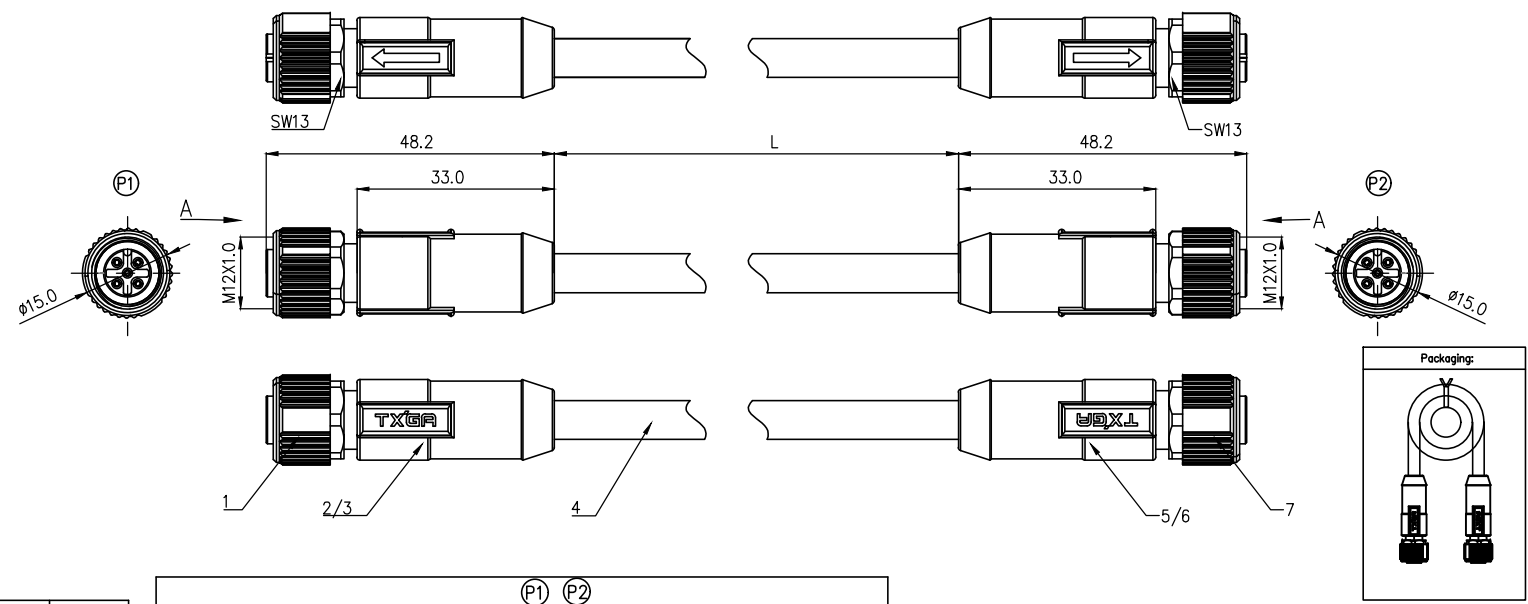
Ordering Information

FM12C 05 08 01 - X XX E XXXXX 00
 1 2 3 4 5 6 7 8

1 Cable type FM12C-M12 Cable	2 Cable category 05-Female Straight to straight	3 Mounting thread 08-M12X1.0	4 Distinction num. 01
---------------------------------	--	---------------------------------	--------------------------

5 Coded A-A CODED B-B CODED D-D CODED	6 Circuits 02-2Circuits 03-3Circuits ... 12-12Circuits	7 Angle-Key E-0°	8 Cable length XXXXX-(see table1)
--	--	---------------------	--------------------------------------

ELECTRICAL
1. Withstanding Voltage: DC 300V
2. Conduction Impedance: 3Ω (Max)
3. Insulation Resistance: 10MΩ (Min)

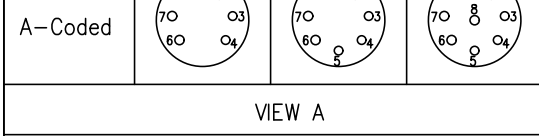


(P1) (P2)											
2Circuits		3Circuits			4Circuits			5Circuits			
A	B	A	B	D	A	B	D	A	B	D	
Shell-Braid		Shell-Braid			Shell-Braid			Shell-Braid			
3	Blue	4	3	Blue	4	3	Blue	4	3	Blue	5
1	Brown	1	1	Brown	1	1	Brown	1	1	White	2
Circuits	wire color	Circuits	wire color	Circuits	wire color	Circuits	wire color	Circuits	wire color	Circuits	wire color

Connector product information					Cable product Information	
Circuits	Rated voltage	Rated impulse voltage	Rated current	Insulation resistance	O.D	Wire Size(mm ² AWG)
2Circuits	250V	2500V	4A	≥100MΩ	4.5	0.34mm ² /22AWG
3Circuits	250V	2500V	4A	≥100MΩ	5.0	0.34mm ² /22AWG
4Circuits	250V	2500V	4A	≥100MΩ	5.5	0.34mm ² /22AWG
5Circuits	60V	1500V	4A	≥100MΩ	6.0	0.34mm ² /22AWG
7	M12 (A/B/D)-codes (2/3/4/5)circuits female shielded plug					
6	Overmold:PVC black 30P					
5	Innermold:PVC black 30P					
4	UL 20549 (2C/3C/4C/5C)22AWG, AB, JACKET: BK, PUR					
3	Overmold:PVC black 30P					
2	Innermold:PVC black 30P					
1	M12 (A/B/D)-codes (2/3/4/5)circuits female shielded plug					

 THIRD ANGLE PROJECTION DESIGN UNITS METRIC SCALE 1:1 SIZE A4	GENERAL TOLERANCES (UNLESS SPECIFIED)		APPROVE BY	DATE	PART NO.	ITEM NO.	 Building Technology Cornerstone REV 0 SHEET NO. 1/3
	X. ±0.30	X.* ±5°	LEO	27/Apr/24	FM12C050801-XXXEXXXXX00	FM12C050801	
	X.X ±0.20	X.XX' ±2°	CHECKED BY	DATE	TITLE		
	X.XX ±0.15	X.XX' ±1°	GISELLE	27/Apr/24	M12 cable connector, double female straight end, shielded, PUR, codes A/B/D, 2-12 circuits		
X.XXX ±0.10	X.XXX' ±0.5°	DRAWN BY	DATE	THIS DRAWING CONTAINS INFORMATION THAT IS PROPRIETARY TO TXGA INDUSTRIAL ELECTRONICS(S.Z)CO.,LTD AND SHOULD NOT BE USED WITHOUT WRITTEN PERMISSION			
		King	27/Apr/24				

1	2	3	4	5	6	7	8			
Coded	6circuits	7circuits	8circuits		REV	LOCATIONS	DESCRIPTION	DATE	REVISER	APPD



- Note:
1. Waterproof rate: IP68
 2. This product must meet IEC61076-2-101
 3. This product must meet 2011/65/EU ROHS compliance.
 4. Not note tolerances: ±0.20
 5. Operation temperature: -40°C~105°C
 6. Mechanical operation: > 100 mating cycles
 7. Non drag chain line

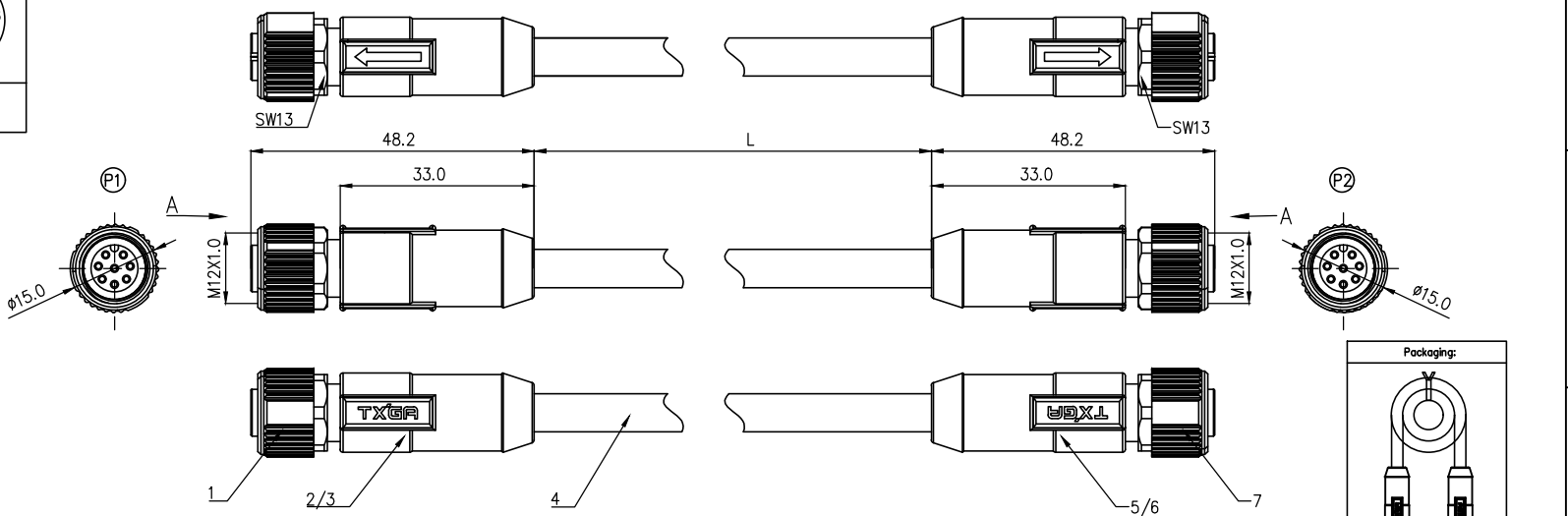


TABLE 1

L (XXXXX)	00050	00100	00150	00200	...	00990
	50mm	100mm	150mm	200mm	...	990mm
	01000	01500	02000	10000	...	99900
	1M	1.5M	2M	10M	...	99.9M
Dimensions L (mm)						
Range(length)	50 to 200	201 to 500	1001 to 5000	5000 to 9000		
Tolerance(mm)	±10	±15	±25	±30		
PACKING SPECIFICATION						
Range(length)	50 to 200	201 to 1000	1001 to 5000			
	5pcs/Bag	2pcs/Bag	1pcs/Bag			

P1 // P2					
6Circuits		7Circuits		8Circuits	
Shell-Braid		Shell-Braid		Shell-Braid	
7	Blue	7	Blue	8	Blue
6	Pink	6	Pink	6	Pink
		5	Gray	5	Gray
4	Yellow	4	Yellow	4	Yellow
3	Green	3	Green	3	Green
2	Brown	2	Brown	2	Brown
1	White	1	White	1	White
Circuits	wire color	Circuits	wire color	Circuits	wire color

Connector product information					Cable product Information	
Circuits	Rated voltage	Rated impulse voltage	Rated current	Insulation resistance	O.D	Wire Size(mm ²) AWG
6Circuits	30V	800V	2A	≥100MΩ	5.0	0.25mm ² /24AWG
7Circuits	30V	800V	2A	≥100MΩ	5.5	0.25mm ² /24AWG
8Circuits	30V	800V	2A	≥100MΩ	6.0	0.25mm ² /24AWG
7	M12 A-codes (6/7/8)circuits female shielded plug					
6	Overmold:PVC black 30P					
5	Innermold:PVC black 30P					
4	UL 20549 (6C/7C/8C)24AWG, AB, JACKET:BK, PUR					
3	Overmold:PVC black 30P					
2	Innermold:PVC black 30P					
1	M12 A-codes (6/7/8)circuits female shielded plug					

Ordering Information

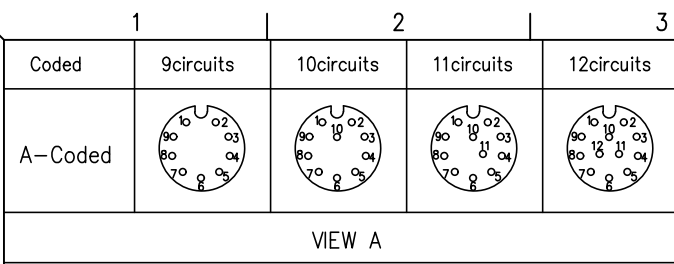
FM12C 05 08 01 - X XX E XXXXX 00
 1 2 3 4 5 6 7 8

1 Cable type: FM12C-M12 Cable
 2 Cable category: 05-Female Straight to straight
 3 Mounting thread: 08-M12X1.0
 4 Distinction num.: 01

5 Coded: A-A CODED, B-B CODED, D-D CODED
 6 Circuits: 02-2Circuits, 03-3Circuits, ... 12-12Circuits
 7 Angle-Key: E-0°
 8 Cable length: XXXXX-(see table1)

ELECTRICAL
1. Withstanding Voltage:DC 300V
2. Conduction Impedance: 3Ω (Max)
3. Insulation Resistance: 10MΩ(Min)

 THIRD ANGLE PROJECTION DESIGN UNITS METRIC SCALE 1:1 SIZE A4	GENERAL TOLERANCES (UNLESS SPECIFIED)		APPROVE BY	DATE	PART NO.	ITEM NO.	 Building Technology Cornerstone REV 0 SHEET NO. 2/3
	X. ±0.30	X.* ±5°	CHECKED BY	DATE	FM12C050801-XXXEXXXXX00 FM12C050801		
	X.X ±0.20	X.X.* ±2°	GISELLE	27/Apr/24	TITLE		
	X.XX ±0.15	X.XX.* ±1°	DRAWN BY	DATE	M12 cable connector, double female straight end, shielded, PUR, codes A/B/D, 2-12 circuits		
X.XXX ±0.10	X.XXX.* ±0.5°	King	27/Apr/24	THIS DRAWING CONTAINS INFORMATION THAT IS PROPRIETARY TO TXGA INDUSTRIAL ELECTRONICS(S.Z)CO.,LTD AND SHOULD NOT BE USED WITHOUT WRITTEN PERMISSION			



VIEW A

- Note:
1. Waterproof rate: IP68
 2. This product must meet IEC61076-2-101
 3. This product must meet 2011/65/EU ROHS compliance.
 4. Not note tolerances: ±0.20
 5. Operation temperature: -40°C~105°C
 6. Mechanical operation: > 100 mating cycles
 7. Non drag chain line

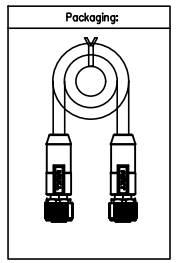
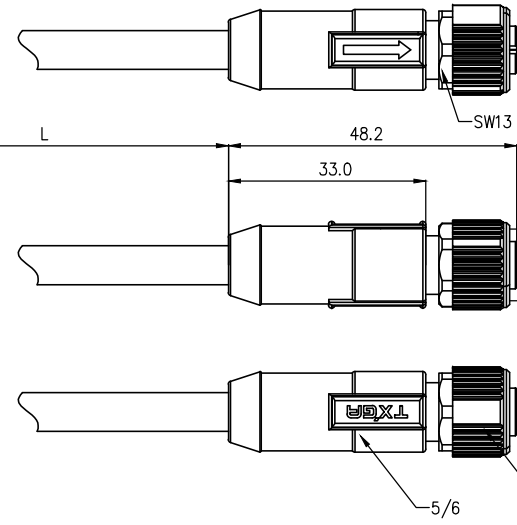
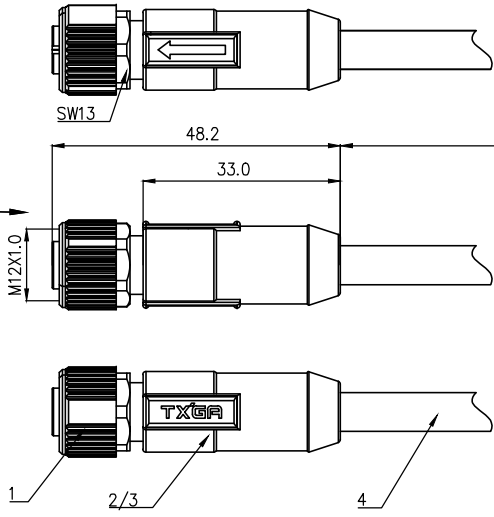
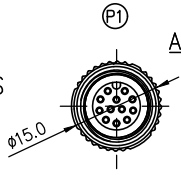


TABLE 1

L (XXXXX)	00050	00100	00150	00200	...	00990
	50mm	100mm	150mm	200mm	...	990mm
	01000	01500	02000	10000	...	99900
	1M	1.5M	2M	10M	...	99.9M
Dimensions L (mm)						
Range(length)	50 to 200	201 to 500	1001 to 5000	5000 to 9000		
Tolerance(mm)	±10	±15	±25	±30		
PACKING SPECIFICATION						
Range(length)	50 to 200	201 to 1000	1001 to 5000			
	5pcs/Bag	2pcs/Bag	1pcs/Bag			

		P1		P2	
		9Circuits	10Circuits	11Circuits	12Circuits
		Shell-Braid	Shell-Braid	Shell-Braid	Shell-Braid
				11	12
				Orange	Cyan
				11	Orange
			10	Purple	10
			Purple	10	Purple
		9	9	Red	9
		Red	Red	9	Red
		8	8	Gray	8
		Gray	Gray	8	Gray
		7	7	Black	7
		Black	Black	7	Black
		6	6	Yellow	6
		Yellow	Yellow	6	Yellow
		5	5	Pink	5
		Pink	Pink	5	Pink
		4	4	Green	4
		Green	Green	4	Green
		3	3	White	3
		White	White	3	White
		2	2	Blue	2
		Blue	Blue	2	Blue
		1	1	Brown	1
		Brown	Brown	1	Brown
		Circuits	wire color	Circuits	wire color
		Circuits	wire color	Circuits	wire color
		Circuits	wire color	Circuits	wire color
		Circuits	wire color	Circuits	wire color

Ordering Information

FM12C 05 08 01 - X XX E XXXXX 00
 1 2 3 4 5 6 7 8

1 Cable type FM12C-M12 Cable
 2 Cable category 05-Female Straight to straight
 3 Mounting thread 08-M12X1.0
 4 Distinction num. 01

5 Coded A-A CODED B-B CODED D-D CODED
 6 Circuits 02-2Circuits 03-3Circuits ... 12-12Circuits
 7 Angle-Key E-0°
 8 Cable length XXXXX-(see table1)

ELECTRICAL		
1. Withstanding Voltage: DC 300V		
2. Conduction Impedance: 3Ω (Max)		
3. Insulation Resistance: 10MΩ (Min)		

THIRD ANGLE PROJECTION	GENERAL TOLERANCES (UNLESS SPECIFIED)		APPROVE BY LEO	DATE 27/Apr/24	PART NO. FM12C050801-XXXEXXXXX00	ITEM NO. FM12C050801
	X. ±0.30	X.* ±5°	CHECKED BY GISELLE	DATE 27/Apr/24	TITLE M12 cable connector, double female straight end, shielded, PUR, codes A/B/D, 2-12 circuits	
	X.X ±0.20	X.X* ±2°	DRAWN BY King	DATE 27/Apr/24	THIS DRAWING CONTAINS INFORMATION THAT IS PROPRIETARY TO TXGA INDUSTRIAL ELECTRONICS(S.Z)CO.,LTD AND SHOULD NOT BE USED WITHOUT WRITTEN PERMISSION	
	X.XX ±0.15	X.XX* ±1°				
SCALE 1:1	SIZE A4	X.XXX ±0.10	X.XXX* ±0.5°			

Connector product information					Cable product Information	
Circuits	Rated voltage	Rated impulse voltage	Rated current	Insulation resistance	O.D	Wire Size(mm ²) AWG
9Circuits	30V	800V	1.5A	≥100MΩ	6.0	0.14mm ² /26AWG
10Circuits	30V	800V	1.5A	≥100MΩ	6.0	0.14mm ² /26AWG
11Circuits	30V	800V	1.5A	≥100MΩ	6.5	0.14mm ² /26AWG
12Circuits	30V	800V	1.5A	≥100MΩ	6.5	0.14mm ² /26AWG
7	M12 A-codes (9/10/11/12)circuits female shielded plug					
6	Overmold: PVC black 30P					
5	Innere mold: PVC black 30P					
4	UL 20549 (9C/10C/11C/12C)26AWG, AB, JACKET: BK, PUR					
3	Overmold: PVC black 30P					
2	Innere mold: PVC black 30P					
1	M12 A-codes (9/10/11/12)circuits female shielded plug					



Building Technology Cornerstone

REV 0 SHEET NO. 3/3