

	1	2	3	4	5
	Coded	2circuits	3circuits	4circuits	5circuits
A	A-Coded				
	B-Coded				
B	D-Coded				
	VIEW A				

- Note:
1. Waterproof rate: IP68
  2. This product must meet IEC61076-2-101
  3. This product must meet 2011/65/EU ROHS compliance.
  4. Not note tolerances: ±0.20
  5. Operation temperature: -40°C~105°C
  6. Mechanical operation: > 100 mating cycles
  7. Non drag chain line

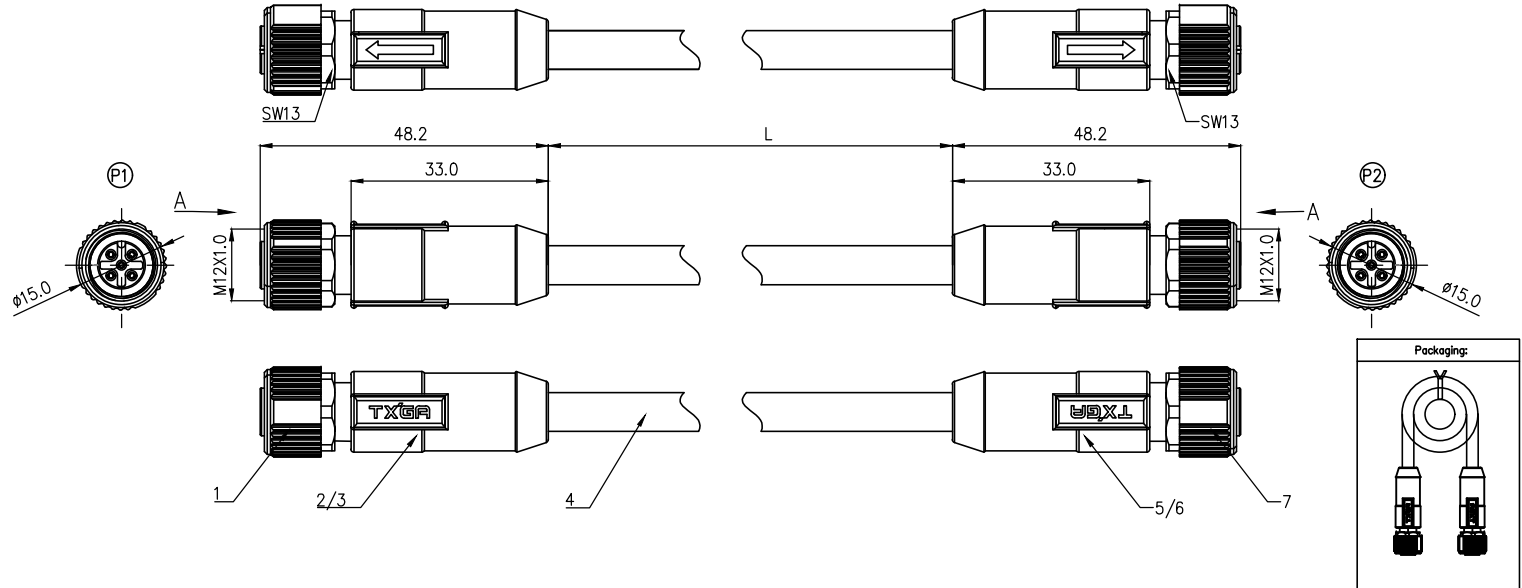


TABLE 1

L (XXXXX)	00050	00100	00150	00200	...	00990
	50mm	100mm	150mm	200mm	...	990mm
	01000	01500	02000	10000	...	99900
	1M	1.5M	2M	10M	...	99.9M
Dimensions L (mm)						
Range(length)	50 to 200	201 to 500	1001 to 5000	5000 to 9000		
Tolerance(mm)	±10	±15	±25	±30		
PACKING SPECIFICATION						
Range(length)	50 to 200	201 to 1000	1001 to 5000			
	5pcs/Bag	2pcs/Bag	1pcs/Bag			

								(P1) (P2)	
2Circuits		3Circuits		4Circuits		5Circuits			
A	B	A	B	D	A	B	D	A	B
								5	Gray
		4	Black	4	Black	4	Black		
3	Blue	3	Blue	3	Blue	3	Blue		
				2	White	2	White		
1	Brown	1	Brown	1	Brown	1	Brown		
Circuits	wire color	Circuits	wire color	Circuits	wire color	Circuits	wire color	Circuits	wire color

Connector product information					Cable product Information	
Circuits	Rated voltage	Rated impulse voltage	Rated current	Insulation resistance	O.D	Wire Size(mm <sup>2</sup> )/22AWG
2Circuits	250V	2500V	4A	≥100MΩ	4.0	0.34mm <sup>2</sup> /22AWG
3Circuits	250V	2500V	4A	≥100MΩ	4.5	0.34mm <sup>2</sup> /22AWG
4Circuits	250V	2500V	4A	≥100MΩ	5.0	0.34mm <sup>2</sup> /22AWG
5Circuits	60V	1500V	4A	≥100MΩ	5.5	0.34mm <sup>2</sup> /22AWG
7	M12 (A/B/D)-codes (2/3/4/5)circuits female unshielded plug					
6	Overmold: PVC black 30P					
5	Innermold: PVC black 30P					
4	UL 20549 (2C/3C/4C/5C)22AWG, JACKET: BK, PUR					
3	Overmold: PVC black 30P					
2	Innermold: PVC black 30P					
1	M12 (A/B/D)-codes (2/3/4/5)circuits female unshielded plug					

Ordering Information

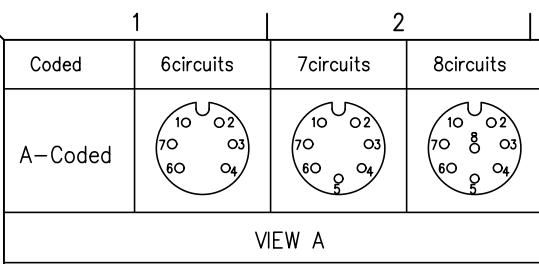
FM12C 05 08 05 - X XX E XXXXX 00  
 1 2 3 4 5 6 7 8

1 Cable type FM12C-M12 Cable	2 Cable category 05-Female Straight to straight	3 Mounting thread 08-M12X1.0	4 Distinction num. 05
---------------------------------	--	---------------------------------	--------------------------

5 Coded A-A CODED B-B CODED D-D CODED	6 Circuits 02-2Circuits 03-3Circuits ... 12-12Circuits	7 Angle-Key E-0°	8 Cable length XXXXX-(see table1)
--	--	---------------------	--------------------------------------

ELECTRICAL
1. Withstanding Voltage: DC 300V
2. Conduction Impedance: 3Ω (Max)
3. Insulation Resistance: 10MΩ (Min)

 THIRD ANGLE PROJECTION DESIGN UNITS METRIC SCALE 1:1 SIZE A4	GENERAL TOLERANCES (UNLESS SPECIFIED)		APPROVE BY	DATE	PART NO.	ITEM NO.	 Building Technology Cornerstone REV 0 SHEET NO. 1/3 THIS DRAWING CONTAINS INFORMATION THAT IS PROPRIETARY TO TXGA INDUSTRIAL ELECTRONICS(S.Z)CO.,LTD AND SHOULD NOT BE USED WITHOUT WRITTEN PERMISSION
	X. ±0.30	X.* ±5°	CHECKED BY	DATE	FM12C050805-XXXEXXXXX00 FM12C050805		
	X.X ±0.20	X.X* ±2°	GISELLE	27/Apr/24			
	X.XX ±0.15	X.XX* ±1°	DRAWN BY	DATE			
	X.XXX ±0.10	X.XXX* ±0.5°	King	27/Apr/24			



Note:  
 1. Waterproof rate: IP68  
 2. This product must meet IEC61076-2-101  
 3. This product must meet 2011/65/EU ROHS compliance.  
 4. Not note tolerances: ±0.20  
 5. Operation temperature: -40°C~105°C  
 6. Mechanical operation: > 100 mating cycles  
 7. Non drag chain line

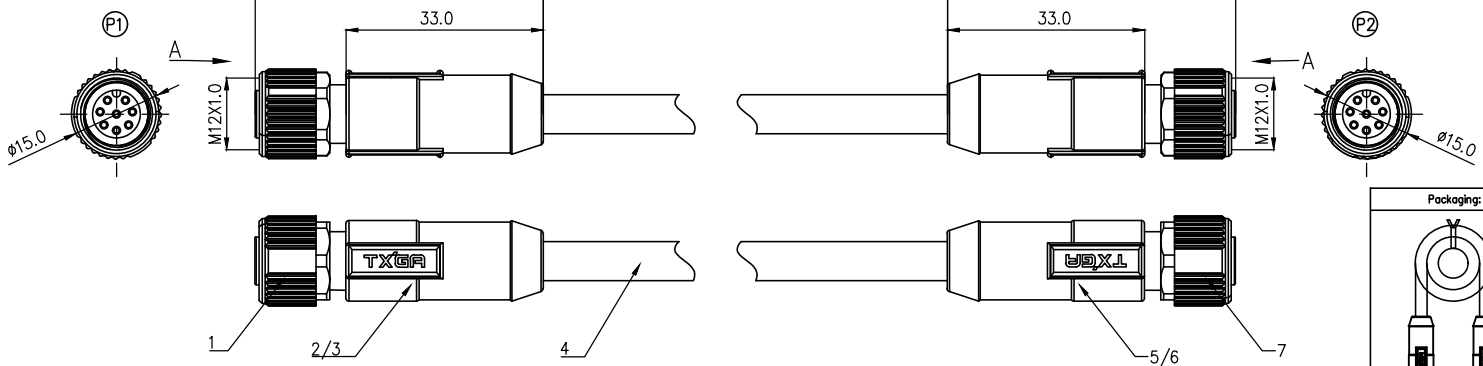


TABLE 1

L (XXXXX)	00050	00100	00150	00200	...	00990
	50mm	100mm	150mm	200mm	...	990mm
	01000	01500	02000	10000	...	99900
	1M	1.5M	2M	10M	...	99.9M
Dimensions L (mm)						
Range(length)	50 to 200	201 to 500	1001 to 5000	5000 to 9000		
Tolerance(mm)	±10	±15	±25	±30		
PACKING SPECIFICATION						
Range(length)	50 to 200	201 to 1000	1001 to 5000			
	5pcs/Bag	2pcs/Bag	1pcs/Bag			

		P1 / P2			
6Circuits		7Circuits		8Circuits	
7	Blue	7	Blue	7	Blue
6	Pink	6	Pink	6	Pink
		5	Gray	5	Gray
4	Yellow	4	Yellow	4	Yellow
3	Green	3	Green	3	Green
2	Brown	2	Brown	2	Brown
1	White	1	White	1	White
Circuits	wire color	Circuits	wire color	Circuits	wire color

Connector product information					Cable product Information	
Circuits	Rated voltage	Rated impulse voltage	Rated current	Insulation resistance	O.D	Wire Size(mm <sup>2</sup> ) AWG
6Circuits	30V	800V	2A	≥100MΩ	4.5	0.25mm <sup>2</sup> /24AWG
7Circuits	30V	800V	2A	≥100MΩ	5.0	0.25mm <sup>2</sup> /24AWG
8Circuits	30V	800V	2A	≥100MΩ	5.5	0.25mm <sup>2</sup> /24AWG
7	M12 A-codes (6/7/8)circuits female unshielded plug					
6	Overmold:PVC black 30P					
5	Innermold:PVC black 30P					
4	UL 20549 (6C/7C/8C)24AWG,JACKET:BK, PUR					
3	Overmold:PVC black 30P					
2	Innermold:PVC black 30P					
1	M12 A-codes (6/7/8)circuits female unshielded plug					

### Ordering Information

FM12C 05 08 05 - X XX E XXXXX 00  
 1 2 3 4 5 6 7 8

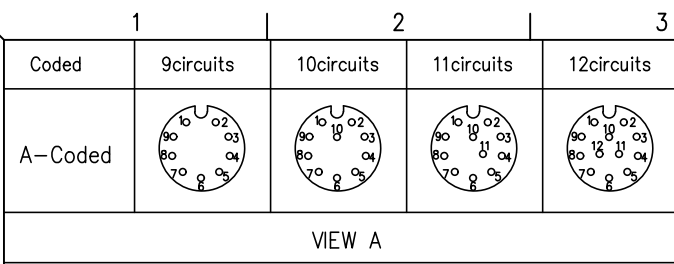
1 Cable type FM12C-M12 Cable  
 2 Cable category 05-Female Straight to straight  
 3 Mounting thread 08-M12X1.0  
 4 Distinction num. 05

5 Coded A-A CODED B-B CODED D-D CODED  
 6 Circuits 02-2Circuits 03-3Circuits ... 12-12Circuits  
 7 Angle-Key E-0°  
 8 Cable length XXXXX-(see table1)

ELECTRICAL
1. Withstanding Voltage:DC 300V
2. Conduction Impedance: 3Ω (Max)
3. Insulation Resistance: 10MΩ(Min)

 THIRD ANGLE PROJECTION DESIGN UNITS METRIC SCALE 1:1 SIZE A4	GENERAL TOLERANCES (UNLESS SPECIFIED)		APPROVE BY LEO	DATE 27/Apr/24	PART NO. FM12C050805-XXXEXXXXX00	ITEM NO. FM12C050805
	X. ±0.30	X.* ±5°	CHECKED BY GISELLE	DATE 27/Apr/24	TITLE M12 cable connector, double female straight end, unshielded, PUR, codes A/B/D, 2~12 circuits	
	X.X ±0.20	X.X* ±2°	DRAWN BY King	DATE 27/Apr/24	THIS DRAWING CONTAINS INFORMATION THAT IS PROPRIETARY TO TXGA INDUSTRIAL ELECTRONICS(S.Z)CO.,LTD AND SHOULD NOT BE USED WITHOUT WRITTEN PERMISSION	
	X.XX ±0.15	X.XX* ±1°				
X.XXX ±0.10	X.XXX* ±0.5°					

<b>TXGA</b>	
Building Technology Cornerstone	
REV 0	SHEET NO. 2/3



Note:  
 1. Waterproof rate: IP68  
 2. This product must meet IEC61076-2-101  
 3. This product must meet 2011/65/EU ROHS compliance.  
 4. Not note tolerances: ±0.20  
 5. Operation temperature: -40°C~105°C  
 6. Mechanical operation: > 100 mating cycles  
 7. Non drag chain line

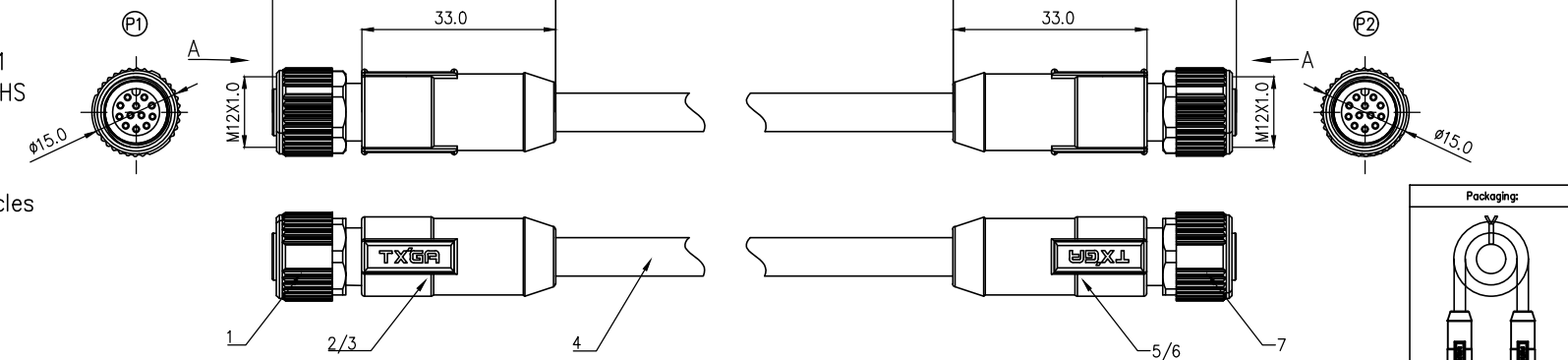


TABLE 1

L (XXXXX)	00050	00100	00150	00200	...	00990
	50mm	100mm	150mm	200mm	...	990mm
	01000	01500	02000	10000	...	99900
	1M	1.5M	2M	10M	...	99.9M
Dimensions L (mm)						
Range(length)	50 to 200	201 to 500	1001 to 5000	5000 to 9000		
Tolerance(mm)	±10	±15	±25	±30		
PACKING SPECIFICATION						
Range(length)	50 to 200	201 to 1000	1001 to 5000			
	5pcs/Bag	2pcs/Bag	1pcs/Bag			

		P1		P2	
		9Circuits	10Circuits	11Circuits	12Circuits
				12	Cyan
				11	Orange
				10	Purple
		9	Purple	10	Purple
		9	Red	9	Red
		8	Gray	8	Gray
		8	Gray	8	Gray
		7	Black	7	Black
		7	Black	7	Black
		6	Yellow	6	Yellow
		6	Yellow	6	Yellow
		5	Pink	5	Pink
		5	Pink	5	Pink
		4	Green	4	Green
		4	Green	4	Green
		3	White	3	White
		3	White	3	White
		2	Blue	2	Blue
		2	Blue	2	Blue
		1	Brown	1	Brown
		1	Brown	1	Brown
Circuits	wire color	Circuits	wire color	Circuits	wire color

Connector product information					Cable product Information	
Circuits	Rated voltage	Rated impulse voltage	Rated current	Insulation resistance	O.D	Wire Size(mm <sup>2</sup> ) AWG
9Circuits	30V	800V	1.5A	≥100MΩ	5.5	0.14mm <sup>2</sup> /26AWG
10Circuits	30V	800V	1.5A	≥100MΩ	5.5	0.14mm <sup>2</sup> /26AWG
11Circuits	30V	800V	1.5A	≥100MΩ	6.0	0.14mm <sup>2</sup> /26AWG
12Circuits	30V	800V	1.5A	≥100MΩ	6.0	0.14mm <sup>2</sup> /26AWG
7	M12 A-codes (9/10/11/12)circuits female unshielded plug					
6	Overmold:PVC black 30P					
5	Innermold:PVC black 30P					
4	UL 20549 (9C/10C/11C/12C)26AWG,JACKET: BK, PUR					
3	Overmold:PVC black 30P					
2	Innermold:PVC black 30P					
1	M12 A-codes (9/10/11/12)circuits female unshielded plug					

### Ordering Information

FM12C 05 08 05 - X XX E XXXXX 00  
 1 2 3 4 5 6 7 8

1 Cable type FM12C-M12 Cable  
 2 Cable category 05-Female Straight to straight  
 3 Mounting thread 08-M12X1.0  
 4 Distinction num. 05

5 Coded A-A CODED B-B CODED D-D CODED  
 6 Circuits 02-2Circuits 03-3Circuits ... 12-12Circuits  
 7 Angle-Key E-0°  
 8 Cable length XXXXX-(see table1)

ELECTRICAL		
1. Withstanding Voltage:DC 300V		
2. Conduction Impedance: 3Ω (Max)		
3. Insulation Resistance: 10MΩ(Min)		

THIRD ANGLE PROJECTION	GENERAL TOLERANCES (UNLESS SPECIFIED)		APPROVE BY LEO	DATE 27/Apr/24	PART NO. FM12C050805-XXXEXXXXX00	ITEM NO. FM12C050805	 Building Technology Cornerstone	
	DESIGN UNITS METRIC	X. ±0.30 X.X ±0.20 X.XX ±0.15 X.XXX ±0.10	X.* ±5° X.X* ±2° X.XX* ±1° X.XXX* ±0.5°	CHECKED BY GISELLE	DATE 27/Apr/24	TITLE M12 cable connector, double female straight end, unshielded, PUR, codes A/B/D, 2~12 circuits		REV 0 SHEET NO. 3/3
	SCALE 1:1 SIZE A4			DRAWN BY King	DATE 27/Apr/24	THIS DRAWING CONTAINS INFORMATION THAT IS PROPRIETARY TO TXGA INDUSTRIAL ELECTRONICS(S.Z)CO.,LTD AND SHOULD NOT BE USED WITHOUT WRITTEN PERMISSION		