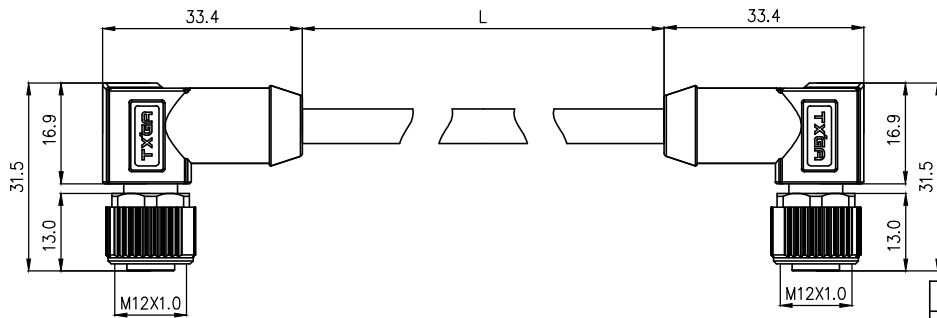


	1	2	3	4	5	6	7	8
	Coded	2circuits	3circuits	4circuits	5circuits			
A	A-Coded							
	B-Coded							
	D-Coded							
	VIEW A							



- Note:
1. Waterproof rate: IP68
 2. This product must meet IEC61076-2-101
 3. This product must meet 2011/65/EU ROHS compliance.
 4. Not note tolerances: ± 0.20
 5. Operation temperature: $-40^{\circ}\text{C} \sim 105^{\circ}\text{C}$
 6. Mechanical operation: > 100 mating cycles
 7. Non drag chain line

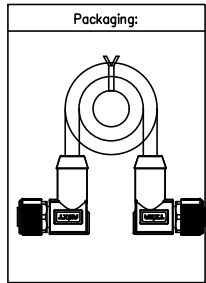


TABLE 1

L (XXXXX)	00050	00100	00150	00200	...	00990
	50mm	100mm	150mm	200mm	...	990mm
	01000	01500	02000	10000	...	99900
	1M	1.5M	2M	10M	...	99.9M
Dimensions L (mm)						
Range(length)	50 to 200	201 to 500	1001 to 5000	5000 to 9000		
Tolerance(mm)	± 10	± 15	± 25	± 30		
PACKING SPECIFICATION						
Range(length)	50 to 200	201 to 1000	1001 to 5000			
	5pcs/Bag	2pcs/Bag	1pcs/Bag			

Ordering Information

FM12C 06 08 02 - X XX C XXXXX 00
 1 2 3 4 5 6 7 8

1 Cable type FM12C-M12 Cable	2 Cable category 06-Female Bent to bent	3 Mounting thread 08-M12X1.0	4 Distinction num. 02
---------------------------------	--	---------------------------------	--------------------------

5 Coded A-A CODED B-B CODED D-D CODED	6 Circuits 02-2Circuits 03-3Circuits ... 12-12Circuits	7 Angle-Key C-45°	8 Cable length XXXXX-(see table1)
--	--	----------------------	--------------------------------------

ELECTRICAL
1. Withstanding Voltage: DC 300V
2. Conduction Impedance: 3Ω (Max)
3. Insulation Resistance: $10M\Omega$ (Min)

2Circuits		3Circuits			4Circuits			5Circuits		
A	B	A	B	D	A	B	D	A	B	D
Shell-Braid		Shell-Braid			Shell-Braid			Shell-Braid		
		4 Black			4 Black			5 Gray		
3 Blue		3 Blue			2 White			4 Black		
1 Brown		1 Brown			1 Brown			2 White		
Circuits		Circuits			Circuits			Circuits		
Wire color		wire color			wire color			wire color		

Connector product information					Cable product Information	
Circuits	Rated voltage	Rated impulse voltage	Rated current	Insulation resistance	O.D	Wire Size(mm ²) AWG
2Circuits	250V	2500V	4A	$\geq 100M\Omega$	4.5	0.34mm ² /22AWG
3Circuits	250V	2500V	4A	$\geq 100M\Omega$	5.0	0.34mm ² /22AWG
4Circuits	250V	2500V	4A	$\geq 100M\Omega$	5.5	0.34mm ² /22AWG
5Circuits	60V	1500V	4A	$\geq 100M\Omega$	6.0	0.34mm ² /22AWG
7	M12 (A/B/D)-codes (2/3/4/5)circuits female shielded plug					
6	Overmold: PVC black 30P					
5	Innermold: PVC black 30P					
4	UL 20549 (2C/3C/4C/5C)22AWG, AB, JACKET: BK, PUR					
3	Overmold: PVC black 30P					
2	Innermold: PVC black 30P					
1	M12 (A/B/D)-codes (2/3/4/5)circuits female shielded plug					

THIRD ANGLE PROJECTION	GENERAL TOLERANCES (UNLESS SPECIFIED)		APPROVE BY LEO	DATE 27/Apr/24	PART NO. FM12C060802-XXXXXXX00	ITEM NO. FM12C060802
	X. ± 0.30	X.* $\pm 5^{\circ}$	CHECKED BY GISELLE	DATE 27/Apr/24	TITLE M12 cable connector, double ended female right angle, shielded, angle 45°, codes A/B/D, 2-12 circuits	
	X.X ± 0.20	X.X* $\pm 2^{\circ}$	DRAWN BY King	DATE 27/Apr/24	THIS DRAWING CONTAINS INFORMATION THAT IS PROPRIETARY TO TXGA INDUSTRIAL ELECTRONICS(S.Z)CO.,LTD AND SHOULD NOT BE USED WITHOUT WRITTEN PERMISSION	
	X.XX ± 0.15	X.XX* $\pm 1^{\circ}$				
SCALE 1:1	SIZE A4	X.XXX ± 0.10	X.XXX* $\pm 0.5^{\circ}$			



Building Technology Cornerstone

REV 0 SHEET NO. 1/3

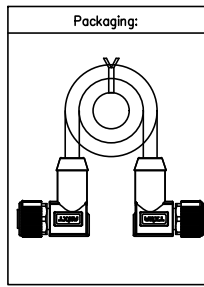
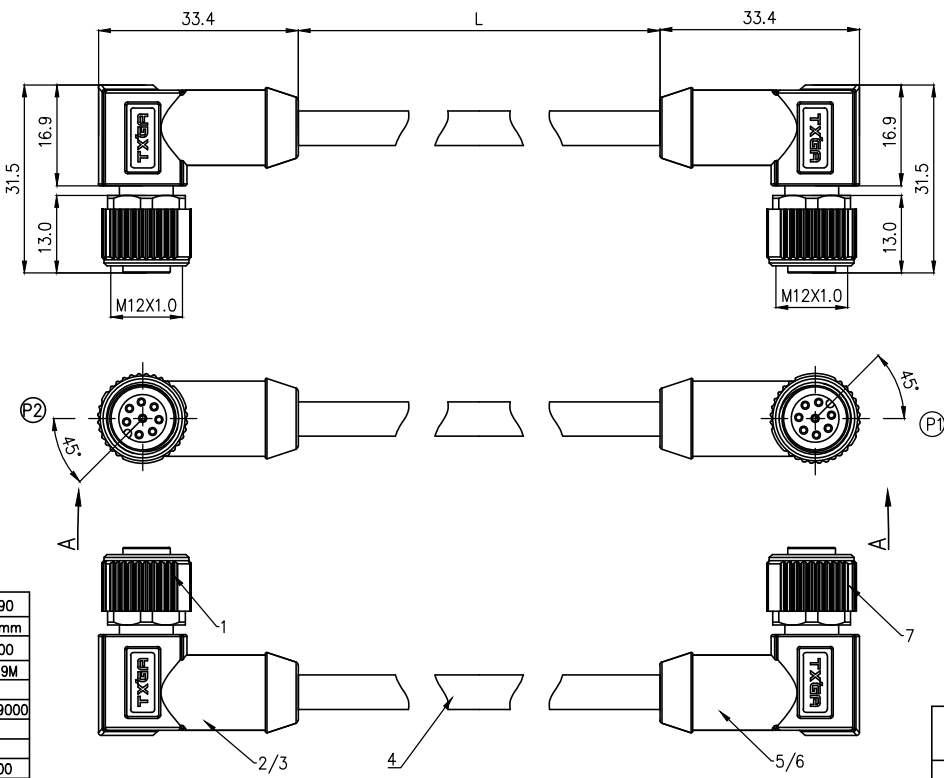
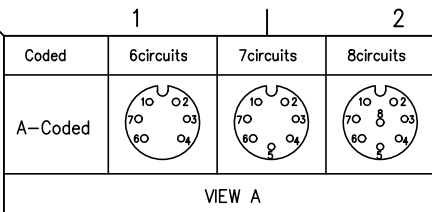


TABLE 1

L (XXXX)	00050	00100	00150	00200	...	00990
	50mm	100mm	150mm	200mm	...	990mm
01000	01500	02000	10000	...	99900	
1M	1.5M	2M	10M	...	99.9M	

Dimensions L (mm)

Range(length)	50 to 200	201 to 500	1001 to 5000	5000 to 9000
Tolerance(mm)	±10	±15	±25	±30

PACKING SPECIFICATION

Range(length)	50 to 200	201 to 1000	1001 to 5000
	5pcs/Bag	2pcs/Bag	1pcs/Bag

Ordering Information

FM12C 06 08 02 - X XX C XXXXX 00
 1 2 3 4 5 6 7 8

1 Cable type: FM12C-M12 Cable
 2 Cable category: 06-Female Bent to bent
 3 Mounting thread: 08-M12X1.0
 4 Distinction num.: 02

5 Coded: A-A CODED, B-B CODED, D-D CODED
 6 Circuits: 02-2Circuits, 03-3Circuits, ... 12-12Circuits
 7 Angle-Key: C-45°
 8 Cable length: XXXXX-(see table1)

ELECTRICAL
1. Withstanding Voltage:DC 300V
2. Conduction Impedance: 3Ω (Max)
3. Insulation Resistance: 10MΩ (Min)

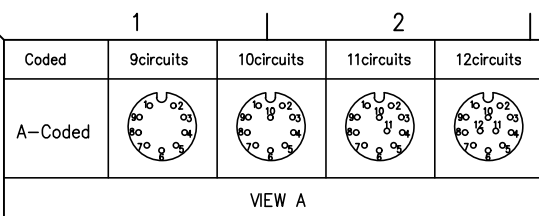
REV	LOCATIONS	DESCRIPTION	DATE	REVISER	APPD

- Note:
1. Waterproof rate: IP68
 2. This product must meet IEC61076-2-101
 3. This product must meet 2011/65/EU ROHS compliance.
 4. Not note tolerances: ±0.20
 5. Operation temperature: -40°C~105°C
 6. Mechanical operation: > 100 mating cycles
 7. Non drag chain line

6Circuits		7Circuits		8Circuits	
Shell-Braid		Shell-Braid		Shell-Braid	
7	Blue	7	Blue	8	Red
6	Pink	6	Pink	7	Blue
		5	Gray	6	Pink
4	Yellow	4	Yellow	5	Gray
3	Green	3	Green	4	Yellow
2	Brown	2	Brown	3	Green
1	White	1	White	2	Brown
Circuits	wire color	Circuits	wire color	Circuits	wire color

Connector product information					Cable product Information	
Circuits	Rated voltage	Rated impulse voltage	Rated current	Insulation resistance	O.D	Wire Size(mm ²) AWG
6Circuits	30V	800V	2A	≥100MΩ	5.0	0.25mm ² /24AWG
7Circuits	30V	800V	2A	≥100MΩ	5.5	0.25mm ² /24AWG
8Circuits	30V	800V	2A	≥100MΩ	6.0	0.25mm ² /24AWG
7	M12 (A/B/D)-codes (2/3/4/5)circuits female shielded plug					
6	Overmold: PVC black 30P					
5	Innermold: PVC black 30P					
4	UL 20549 (6C/7C/8C)24AWG, AB, JACKET: BK, PUR					
3	Overmold: PVC black 30P					
2	Innermold: PVC black 30P					
1	M12 (A/B/D)-codes (2/3/4/5)circuits female shielded plug					

 THIRD ANGLE PROJECTION DESIGN UNITS METRIC SCALE 1:1 SIZE A4	GENERAL TOLERANCES (UNLESS SPECIFIED)		APPROVE BY	DATE	PART NO.	ITEM NO.
	X. ±0.30	X.* ±5°	LEO	27/Apr/24	FM12C060802-XXXXXXX00	FM12C060802
	X.X ±0.20	X.X* ±2°	CHECKED BY	DATE	TITLE	 Building Technology Cornerstone
	X.XX ±0.15	X.XX* ±1°	GISELLE	27/Apr/24	M12 cable connector, double ended female right angle, shielded, angle 45°, codes A/B/D, 2~12 circuits	
X.XXX ±0.10	X.XXX* ±0.5°	DRAWN BY	DATE	THIS DRAWING CONTAINS INFORMATION THAT IS PROPRIETARY TO TXGA INDUSTRIAL ELECTRONICS(S.Z)CO.,LTD AND SHOULD NOT BE USED WITHOUT WRITTEN PERMISSION		
		King	27/Apr/24	REV 0	SHEET NO. 2/3	



Note:
 1. Waterproof rate: IP68
 2. This product must meet IEC61076-2-101
 3. This product must meet 2011/65/EU ROHS compliance.
 4. Not note tolerances: ±0.20
 5. Operation temperature: -40°C~105°C
 6. Mechanical operation: > 100 mating cycles
 7. Non drag chain line

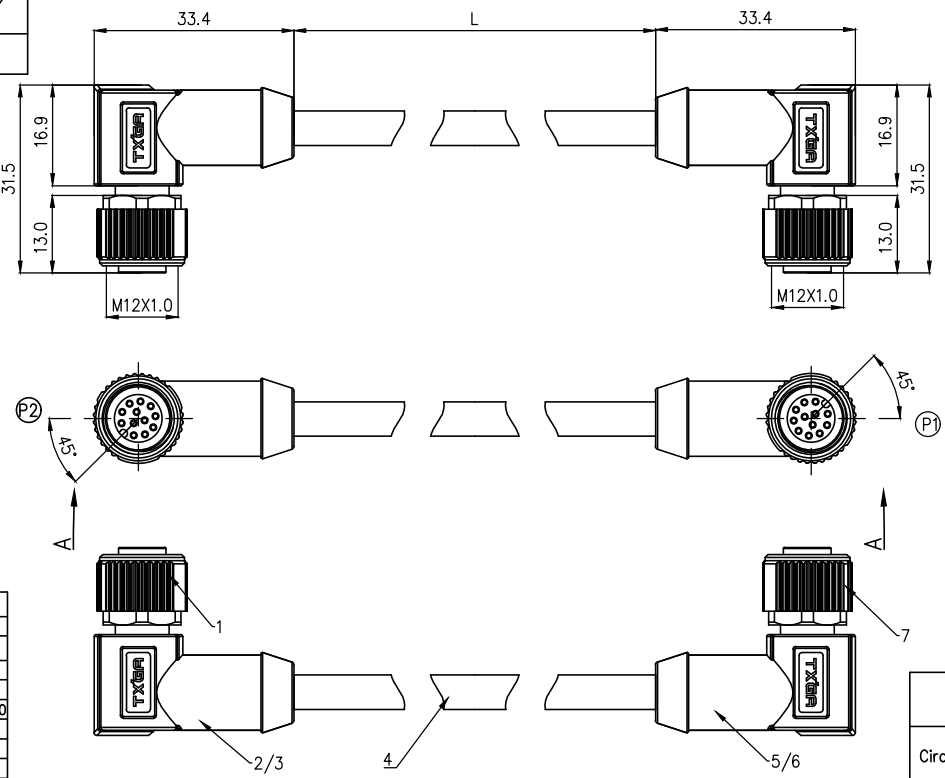


TABLE 1

L (XXXXX)	00050	00100	00150	00200	...	00990
	50mm	100mm	150mm	200mm	...	990mm
	01000	01500	02000	10000	...	99900
	1M	1.5M	2M	10M	...	99.9M
Dimensions L (mm)						
Range(length)	50 to 200	201 to 500	1001 to 5000	5000 to 9000		
Tolerance(mm)	±10	±15	±25	±30		
PACKING SPECIFICATION						
Range(length)	50 to 200	201 to 1000	1001 to 5000			
	5pcs/Bag	2pcs/Bag	1pcs/Bag			

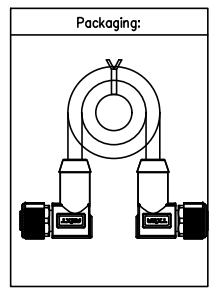
9Circuits		10Circuits		11Circuits		12Circuits	
Shell-Braid		Shell-Braid		Shell-Braid		Shell-Braid	
				11	Orange	12	Cyan
		10	Purple	10	Purple	10	Purple
9	Red	9	Red	9	Red	9	Red
8	Gray	8	Gray	8	Gray	8	Gray
7	Black	7	Black	7	Black	7	Black
6	Yellow	6	Yellow	6	Yellow	6	Yellow
5	Pink	5	Pink	5	Pink	5	Pink
4	Green	4	Green	4	Green	4	Green
3	White	3	White	3	White	3	White
2	Blue	2	Blue	2	Blue	2	Blue
1	Brown	1	Brown	1	Brown	1	Brown
Circuits	wire color	Circuits	wire color	Circuits	wire color	Circuits	wire color

Ordering Information

FM12C 06 08 02 - X XX C XXXXX 00
 1 2 3 4 5 6 7 8

1 Cable type: FM12C-M12 Cable
 2 Cable category: 06-Female Bent to bent
 3 Mounting thread: 08-M12X1.0
 4 Distinction num.: 02

5 Coded: A-A CODED, B-B CODED, D-D CODED
 6 Circuits: 02-2Circuits, 03-3Circuits, ... 12-12Circuits
 7 Angle-Key: C-45°
 8 Cable length: XXXXX-(see table1)



Connector product information					Cable product Information	
Circuits	Rated voltage	Rated impulse voltage	Rated current	Insulation resistance	O.D	Wire Size(mm²) AWG
9Circuits	30V	800V	1.5A	≥100MΩ	6.0	0.14mm²/26AWG
10Circuits	30V	800V	1.5A	≥100MΩ	6.0	0.14mm²/26AWG
11Circuits	30V	800V	1.5A	≥100MΩ	6.5	0.14mm²/26AWG
12Circuits	30V	800V	1.5A	≥100MΩ	6.5	0.14mm²/26AWG
7	M12 A-codes (9/10/11/12)circuits female shielded plug					
6	Overmold:PVC black 30P					
5	Innermold:PVC black 30P					
4	UL 20549 (9C/10C/11C/12C)26AWG, AB, JACKET:BK, PUR					
3	Overmold:PVC black 30P					
2	Innermold:PVC black 30P					
1	M12 A-codes (9/10/11/12)circuits female shielded plug					

ELECTRICAL		
1. Withstanding Voltage:DC 300V		
2. Conduction Impedance: 3Ω (Max)		
3. Insulation Resistance: 10MΩ(Min)		

THIRD ANGLE PROJECTION	GENERAL TOLERANCES (UNLESS SPECIFIED)		APPROVE BY	DATE	PART NO.	ITEM NO.
	X. ±0.30	X.* ±5°	LEO	27/Apr/24	FM12C060802-XXXXXXX00	FM12C060802
	X.X ±0.20	X.X* ±2°	CHECKED BY	DATE	TITLE	
	X.XX ±0.15	X.XX* ±1°	GISELLE	27/Apr/24	M12 cable connector, double ended female right angle, shielded, angle 45°, codes A/B/D, 2~12 circuits	
SCALE 1:1	SIZE A4	X.XXX ±0.10	X.XXX* ±0.5°	DRAWN BY	DATE	THIS DRAWING CONTAINS INFORMATION THAT IS PROPRIETARY TO TXGA INDUSTRIAL ELECTRONICS(S.Z)CO.,LTD AND SHOULD NOT BE USED WITHOUT WRITTEN PERMISSION
				King	27/Apr/24	REV 0 SHEET NO. 3/3



Building Technology Cornerstone

REV 0 SHEET NO. 3/3