

VIEW A

- Note:
1. Waterproof rate: IP68
  2. This product must meet IEC61076-2-101
  3. This product must meet 2011/65/EU ROHS compliance.
  4. Not note tolerances: ±0.20
  5. Operation temperature: -40°C~105°C
  6. Mechanical operation: > 100 mating cycles
  7. Non drag chain line

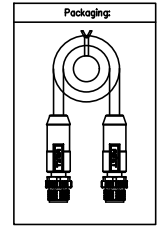
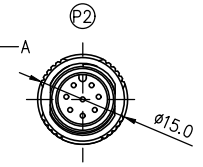
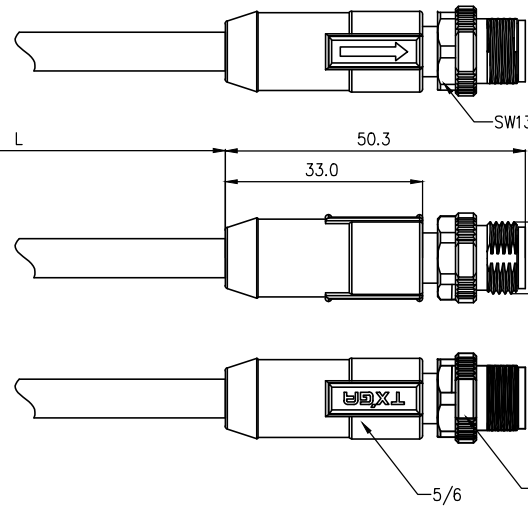
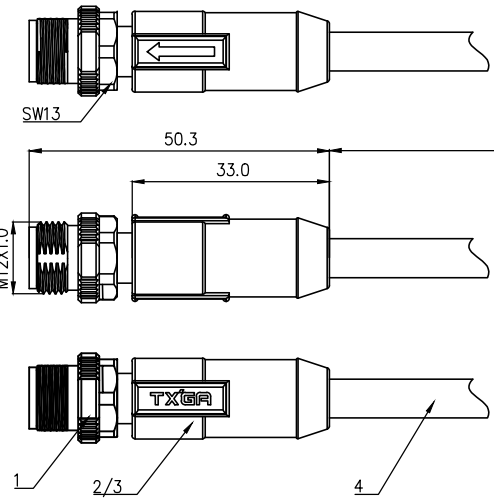
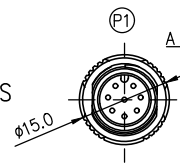


TABLE 1

L (XXXXX)	00050	00100	00150	00200	...	00990
	50mm	100mm	150mm	200mm	...	990mm
	01000	01500	02000	10000	...	99900
	1M	1.5M	2M	10M	...	99.9M
Dimensions L (mm)						
Range(length)	50 to 200	201 to 500	1001 to 5000	5000 to 9000		
Tolerance(mm)	±10	±15	±25	±30		
PACKING SPECIFICATION						
Range(length)	50 to 200	201 to 1000	1001 to 5000			
	5pcs/Bag	2pcs/Bag	1pcs/Bag			

P1/P2					
6Circuits		7Circuits		8Circuits	
Shell-Braid		Shell-Braid		Shell-Braid	
7	Blue	7	Blue	8	Red
6	Pink	6	Pink	6	Pink
		5	Gray	5	Gray
4	Yellow	4	Yellow	4	Yellow
3	Green	3	Green	3	Green
2	Brown	2	Brown	2	Brown
1	White	1	White	1	White
Circuits	wire color	Circuits	wire color	Circuits	wire color

Connector product information					Cable product Information	
Circuits	Rated voltage	Rated impulse voltage	Rated current	Insulation resistance	O.D	Wire Size(mm <sup>2</sup> AWG)
6Circuits	30V	800V	2A	≥100MΩ	5.0	0.25mm <sup>2</sup> /24AWG
7Circuits	30V	800V	2A	≥100MΩ	5.5	0.25mm <sup>2</sup> /24AWG
8Circuits	30V	800V	2A	≥100MΩ	6.0	0.25mm <sup>2</sup> /24AWG
7	M12 A-codes (6/7/8)circuits male shielded plug					
6	Overmold:PVC black 30P					
5	Innermold:PVC black 30P					
4	UL 20549 (6C/7C/8C)24AWG, AB, JACKET:BK, PUR					
3	Overmold:PVC black 30P					
2	Innermold:PVC black 30P					
1	M12 A-codes (6/7/8)circuits male shielded plug					

Ordering Information

FM12C 08 08 01 - X XX E XXXXX 00  
 1 2 3 4 5 6 7 8

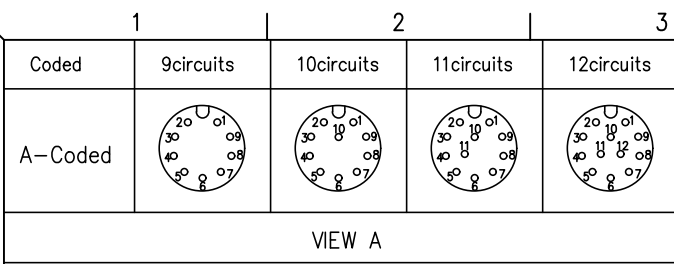
1 | Cable type | 2 | Cable category | 3 | Mounting thread | 4 | Distinction num.  
 FM12C-M12 Cable | 08-Male Straight to straight | 08-M12X1.0 | 01

5 | Coded | 6 | Circuits | 7 | Angle-Key | 8 | Cable length  
 A-A CODED | 02-2Circuits | E-0° | XXXXX-(see table1)  
 B-B CODED | 03-3Circuits |  
 D-D CODED | ... |  
 12-12Circuits

ELECTRICAL
1. Withstanding Voltage:DC 300V
2. Conduction Impedance: 3Ω (Max)
3. Insulation Resistance: 10MΩ(Min)

THIRD ANGLE PROJECTION	GENERAL TOLERANCES (UNLESS SPECIFIED)		APPROVE BY	DATE	PART NO.	ITEM NO.
	X. ±0.30	X.* ±5°	LEO	27/Apr/24	FM12C080801-XXXEXXXXX00	FM12C080801
	X.X ±0.20	X.X* ±2°	CHECKED BY	DATE	TITLE	
	X.XX ±0.15	X.XX* ±1°	GISELLE	27/Apr/24	M12 cable connector, double male straight end, shielded, PUR, codes A/B/D, 2-12 circuits	
SCALE 1:1	SIZE A4	X.XXX ±0.10	X.XXX* ±0.5°	DRAWN BY	DATE	
				King	27/Apr/24	

Building Technology Cornerstone	
REV 0	SHEET NO. 2/3
THIS DRAWING CONTAINS INFORMATION THAT IS PROPRIETARY TO TXGA INDUSTRIAL ELECTRONICS(S.Z)CO.,LTD AND SHOULD NOT BE USED WITHOUT WRITTEN PERMISSION	



Note:  
 1. Waterproof rate: IP68  
 2. This product must meet IEC61076-2-101  
 3. This product must meet 2011/65/EU ROHS compliance.  
 4. Not note tolerances: ±0.20  
 5. Operation temperature: -40°C~105°C  
 6. Mechanical operation: > 100 mating cycles  
 7. Non drag chain line

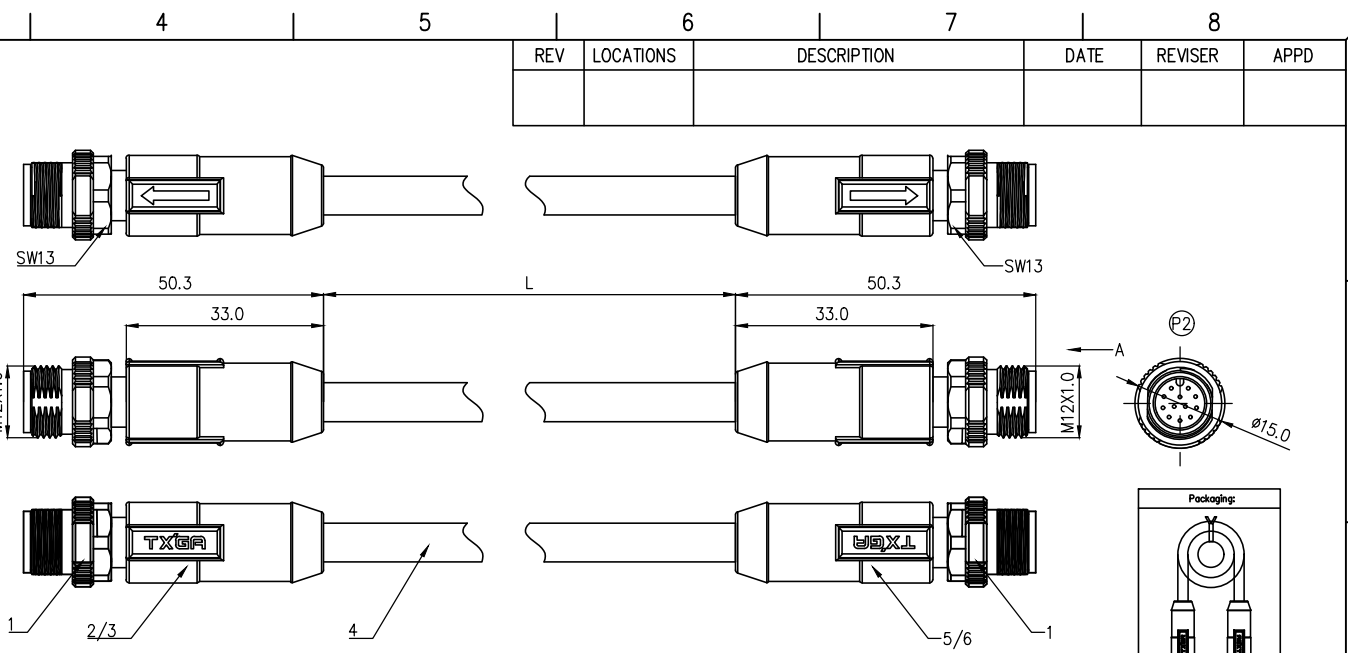


TABLE 1

L (XXXXX)	00050	00100	00150	00200	...	00990
	50mm	100mm	150mm	200mm	...	990mm
	01000	01500	02000	10000	...	99900
	1M	1.5M	2M	10M	...	99.9M
Dimensions L (mm)						
Range(length)	50 to 200	201 to 500	1001 to 5000	5000 to 9000		
Tolerance(mm)	±10	±15	±25	±30		
PACKING SPECIFICATION						
Range(length)	50 to 200	201 to 1000	1001 to 5000			
	5pcs/Bag	2pcs/Bag	1pcs/Bag			

		P1/P2			
		9Circuits	10Circuits	11Circuits	12Circuits
		Shell-Braid	Shell-Braid	Shell-Braid	Shell-Braid
				11	Orange
				12	Cyan
				11	Orange
				10	Purple
9	Red	9	Purple	10	Purple
8	Red	9	Red	9	Red
8	Gray	8	Gray	8	Gray
7	Gray	8	Gray	8	Gray
7	Black	7	Black	7	Black
6	Black	7	Black	7	Black
6	Yellow	6	Yellow	6	Yellow
5	Yellow	6	Yellow	6	Yellow
5	Pink	5	Pink	5	Pink
4	Pink	5	Pink	5	Pink
4	Green	4	Green	4	Green
3	Green	4	Green	4	Green
3	White	3	White	3	White
2	White	3	White	3	White
2	Blue	2	Blue	2	Blue
1	Blue	2	Blue	2	Blue
1	Brown	1	Brown	1	Brown
1	Brown	1	Brown	1	Brown
Circuits	wire color	Circuits	wire color	Circuits	wire color
Circuits	wire color	Circuits	wire color	Circuits	wire color

Connector product information					Cable product Information	
Circuits	Rated voltage	Rated impulse voltage	Rated current	Insulation resistance	O.D	Wire Size(mm <sup>2</sup> ) AWG
9Circuits	30V	800V	1.5A	≥100MΩ	6.0	0.14mm <sup>2</sup> /26AWG
10Circuits	30V	800V	1.5A	≥100MΩ	6.0	0.14mm <sup>2</sup> /26AWG
11Circuits	30V	800V	1.5A	≥100MΩ	6.5	0.14mm <sup>2</sup> /26AWG
12Circuits	30V	800V	1.5A	≥100MΩ	6.5	0.14mm <sup>2</sup> /26AWG
7	M12 A-codes (9/10/11/12)circuits male shielded plug					
6	Overmold:PVC black 30P					
5	Innermold:PVC black 30P					
4	UL 20549 (9C/10C/11C/12C)26AWG, AB, JACKET: BK, PUR					
3	Overmold:PVC black 30P					
2	Innermold:PVC black 30P					
1	M12 A-codes (9/10/11/12)circuits male shielded plug					

### Ordering Information

FM12C 08 08 01 - X XX E XXXXX 00  
 1 2 3 4 5 6 7 8

1 Cable type: FM12C-M12 Cable  
 2 Cable category: 08-Male Straight to straight  
 3 Mounting thread: 08-M12X1.0  
 4 Distinction num.: 01

5 Coded: A-A CODED, B-B CODED, D-D CODED  
 6 Circuits: 02-2Circuits, 03-3Circuits, ..., 12-12Circuits  
 7 Angle-Key: E-0°  
 8 Cable length: XXXXX-(see table1)

ELECTRICAL		
1. Withstanding Voltage: DC 300V		
2. Conduction Impedance: 3Ω (Max)		
3. Insulation Resistance: 10MΩ (Min)		

THIRD ANGLE PROJECTION	GENERAL TOLERANCES (UNLESS SPECIFIED)		APPROVE BY	DATE	PART NO.	ITEM NO.
	X. ±0.30	X.* ±5°	LEO	27/Apr/24	FM12C080801-XXXEXXXXX00	FM12C080801
	X.X ±0.20	X.X.* ±2°	CHECKED BY	DATE	TITLE	
	X.X.X ±0.15	X.XX.* ±1°	GISELLE	27/Apr/24	M12 cable connector, double male straight end, shielded, PUR, codes A/B/D, 2~12 circuits	
SCALE 1:1	SIZE A4	X.XXX ±0.10	X.XXX.* ±0.5°	DRAWN BY	DATE	THIS DRAWING CONTAINS INFORMATION THAT IS PROPRIETARY TO TXGA INDUSTRIAL ELECTRONICS(S.Z)CO.,LTD AND SHOULD NOT BE USED WITHOUT WRITTEN PERMISSION
				King	27/Apr/24	REV 0 SHEET NO. 3/3

**TXGA**  
Building Technology Cornerstone