

	1	2	3	4	
	Coded	2circuits	3circuits	4circuits	5circuits
A	A-Coded				
	B-Coded				
B	D-Coded				
	VIEW A				

- Note:
1. Waterproof rate: IP68
 2. This product must meet IEC61076-2-101
 3. This product must meet 2011/65/EU ROHS compliance.
 4. Not note tolerances: ±0.20
 5. Operation temperature: -40°C~105°C
 6. Mechanical operation: > 100 mating cycles
 7. Non drag chain line

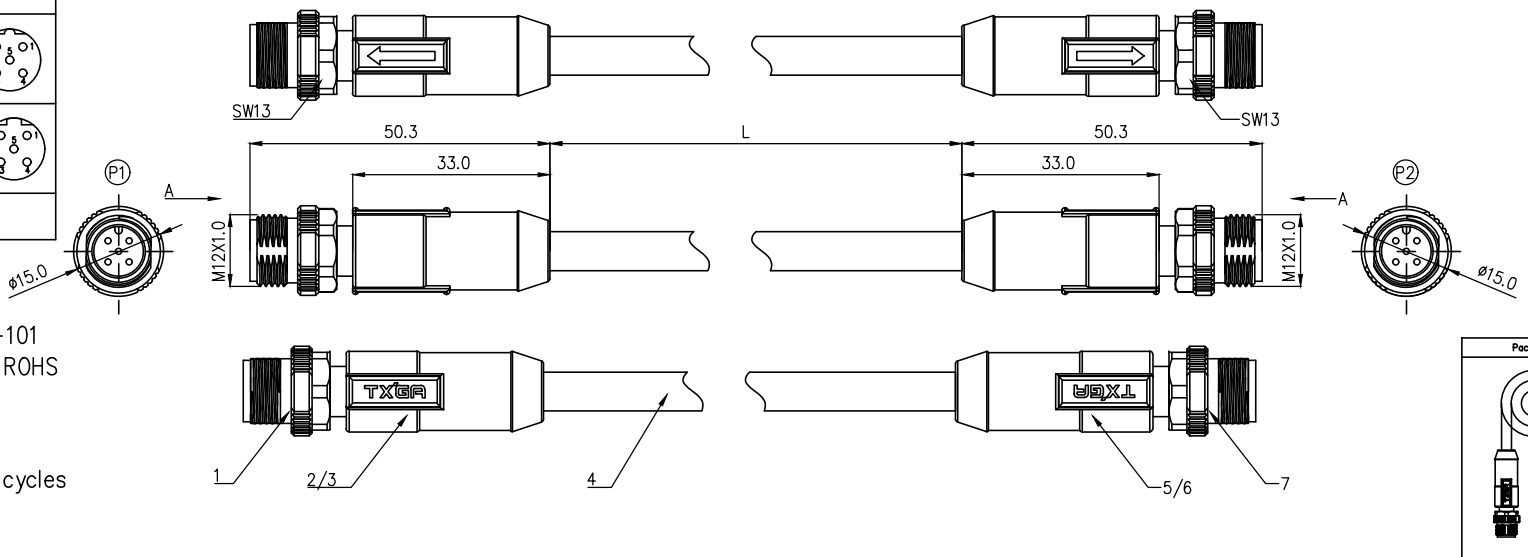


TABLE 1

L (XXXXX)	00050	00100	00150	00200	...	00990
	50mm	100mm	150mm	200mm	...	990mm
	01000	01500	02000	10000	...	99900
	1M	1.5M	2M	10M	...	99.9M
Dimensions L (mm)						
Range(length)	50 to 200	201 to 500	1001 to 5000	5000 to 9000		
Tolerance(mm)	±10	±15	±25	±30		
PACKING SPECIFICATION						
Range(length)	50 to 200	201 to 1000	1001 to 5000			
	5pcs/Bag	2pcs/Bag	1pcs/Bag			

P1 P2											
2Circuits			3Circuits			4Circuits			5Circuits		
A	B		A	B	D	A	B	D	A	B	D
									5	Gray	
			4	Black		4	Black		4	Black	
3	Blue		3	Blue		3	Blue		3	Blue	
						2	White		2	White	
1	Brown		1	Brown		1	Brown		1	Brown	
Circuits	wire color		Circuits	wire color		Circuits	wire color		Circuits	wire color	

Connector product information					Cable product Information	
Circuits	Rated voltage	Rated impulse voltage	Rated current	Insulation resistance	O.D	Wire Size(mm ²) AWG
2Circuits	250V	2500V	4A	≥100MΩ	4.0	0.34mm ² /22AWG
3Circuits	250V	2500V	4A	≥100MΩ	4.5	0.34mm ² /22AWG
4Circuits	250V	2500V	4A	≥100MΩ	5.0	0.34mm ² /22AWG
5Circuits	60V	1500V	4A	≥100MΩ	5.5	0.34mm ² /22AWG
7 M12 (A/B/D)-codes (2/3/4/5)circuits male unshielded plug						
6 Overmold: PVC black 30P						
5 Innermold: PVC black 30P						
4 UL 20549 (2C/3C/4C/5C)22AWG, JACKET: BK, PUR						
3 Overmold: PVC black 30P						
2 Innermold: PVC black 30P						
1 M12 (A/B/D)-codes (2/3/4/5)circuits male unshielded plug						

Ordering Information

FM12C 08 08 05 - X XX E XXXXX 00
 1 2 3 4 5 6 7 8

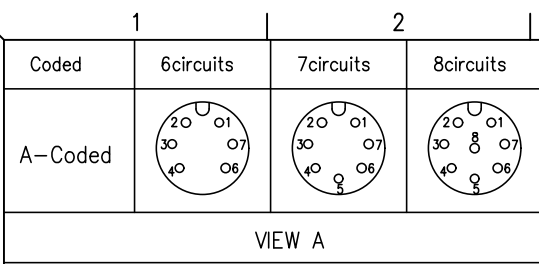
1 Cable type FM12C-M12 Cable	2 Cable category 08-Male Straight to straight	3 Mounting thread 08-M12X1.0	4 Distinction num 05
---------------------------------	--	---------------------------------	-------------------------

5 Coded A-A CODED B-B CODED D-D CODED	6 Circuits 02-2Circuits 03-3Circuits ... 12-12Circuits	7 Angle-Key E-0°	8 Cable length XXXXX-(see table1)
--	--	---------------------	--------------------------------------

ELECTRICAL
1. Withstanding Voltage: DC 300V
2. Conduction Impedance: 3Ω (Max)
3. Insulation Resistance: 10MΩ (Min)

THIRD ANGLE PROJECTION	GENERAL TOLERANCES (UNLESS SPECIFIED)		APPROVE BY LEO	DATE 27/Apr/24	PART NO. FM12C080805-XXXEXXXX00	ITEM NO. FM12C080805
	X. ±0.30	X.* ±5°	CHECKED BY GISELLE	DATE 27/Apr/24	TITLE M12 cable connector, double male straight end, unshielded, PUR, codes A/B/D, 2~12 circuits	
	X.X ±0.20	X.X* ±2°	DRAWN BY King	DATE 27/Apr/24	THIS DRAWING CONTAINS INFORMATION THAT IS PROPRIETARY TO TXGA INDUSTRIAL ELECTRONICS(S.Z)CO.,LTD AND SHOULD NOT BE USED WITHOUT WRITTEN PERMISSION	
	X.XX ±0.15	X.XX* ±1°				
SCALE 1:1	SIZE A4	X.XXX ±0.10	X.XXX* ±0.5°			

		Building Technology Cornerstone	
		REV 0	SHEET NO. 1/3



VIEW A

- Note:
1. Waterproof rate: IP68
 2. This product must meet IEC61076-2-101
 3. This product must meet 2011/65/EU ROHS compliance.
 4. Not note tolerances: ±0.20
 5. Operation temperature: -40°C~105°C
 6. Mechanical operation: > 100 mating cycles
 7. Non drag chain line

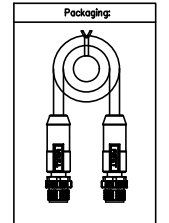
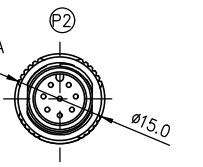
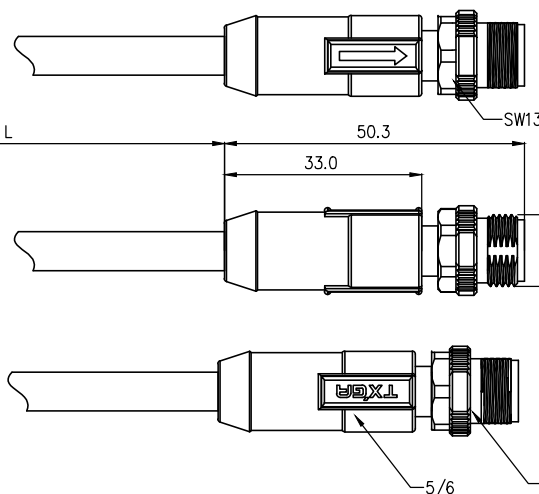
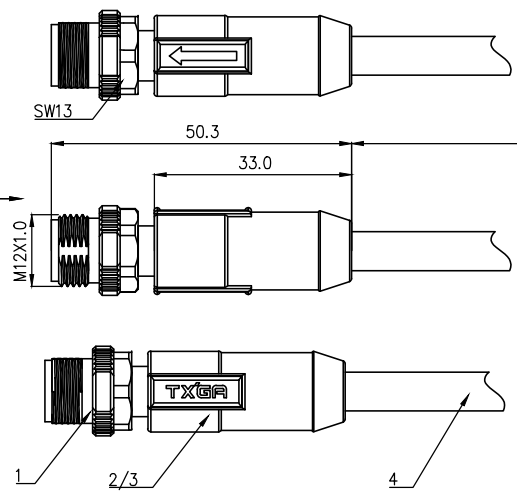
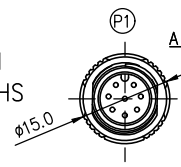


TABLE 1

L (XXXXX)	00050	00100	00150	00200	...	00990
	50mm	100mm	150mm	200mm	...	990mm
	01000	01500	02000	10000	...	99900
	1M	1.5M	2M	10M	...	99.9M
Dimensions L (mm)						
Range(length)	50 to 200	201 to 500	1001 to 5000	5000 to 9000		
Tolerance(mm)	±10	±15	±25	±30		
PACKING SPECIFICATION						
Range(length)	50 to 200	201 to 1000	1001 to 5000			
	5pcs/Bag	2pcs/Bag	1pcs/Bag			

P1/P2					
6Circuits		7Circuits		8Circuits	
7	Blue	7	Blue	8	Red
6	Pink	6	Pink	7	Blue
		5	Gray	5	Gray
4	Yellow	4	Yellow	4	Yellow
3	Green	3	Green	3	Green
2	Brown	2	Brown	2	Brown
1	White	1	White	1	White
Circuits	wire color	Circuits	wire color	Circuits	wire color

Connector product information					Cable product Information	
Circuits	Rated voltage	Rated impulse voltage	Rated current	Insulation resistance	O.D	Wire Size(mm ²) AWG
6Circuits	30V	800V	2A	≥100MΩ	4.5	0.25mm ² /24AWG
7Circuits	30V	800V	2A	≥100MΩ	5.0	0.25mm ² /24AWG
8Circuits	30V	800V	2A	≥100MΩ	5.5	0.25mm ² /24AWG

Ordering Information

FM12C 08 08 05 - X XX E XXXXX 00
 1 2 3 4 5 6 7 8

1 Cable type: FM12C-M12 Cable
 2 Cable category: 08-Male Straight to straight
 3 Mounting thread: 08-M12X1.0
 4 Distinction num: 05

5 Coded: A-A CODED, B-B CODED, D-D CODED
 6 Circuits: 02-2Circuits, 03-3Circuits, ..., 12-12Circuits
 7 Angle-Key: E-0°
 8 Cable length: XXXXX-(see table1)

ELECTRICAL
1. Withstanding Voltage: DC 300V
2. Conduction Impedance: 3Ω (Max)
3. Insulation Resistance: 10MΩ (Min)

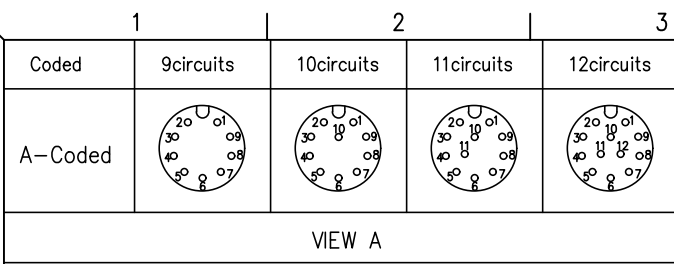
THIRD ANGLE PROJECTION	GENERAL TOLERANCES (UNLESS SPECIFIED)		APPROVE BY	DATE	PART NO.	ITEM NO.
	X. ±0.30	X.* ±5°	LEO	27/Apr/24	FM12C080805-XXXEXXXXX00	FM12C080805
	DESIGN UNITS METRIC		CHECKED BY	DATE	TITLE	
	X.X ±0.20	X.X* ±2°	GISELLE	27/Apr/24	M12 cable connector, double male straight end, unshielded, PUR, codes A/B/D, 2~12 circuits	
SCALE 1:1	SIZE A4	X.XX ±0.15	X.XX* ±1°	DRAWN BY	DATE	THIS DRAWING CONTAINS INFORMATION THAT IS PROPRIETARY TO TXGA INDUSTRIAL ELECTRONICS(S.Z)CO.,LTD AND SHOULD NOT BE USED WITHOUT WRITTEN PERMISSION
		X.XXX ±0.10	X.XXX* ±0.5°	King	27/Apr/24	

- 7 M12 A-codes (6/7/8)circuits male unshielded plug
- 6 Overmold: PVC black 30P
- 5 Innermold: PVC black 30P
- 4 UL 20549 (6C/7C/8C)24AWG, JACKET: BK, PUR
- 3 Overmold: PVC black 30P
- 2 Innermold: PVC black 30P
- 1 M12 A-codes (6/7/8)circuits male unshielded plug



Building Technology Cornerstone

REV 0 SHEET NO. 2/3



Note:
 1. Waterproof rate: IP68
 2. This product must meet IEC61076-2-101
 3. This product must meet 2011/65/EU ROHS compliance.
 4. Not note tolerances: ±0.20
 5. Operation temperature: -40°C~105°C
 6. Mechanical operation: > 100 mating cycles
 7. Non drag chain line

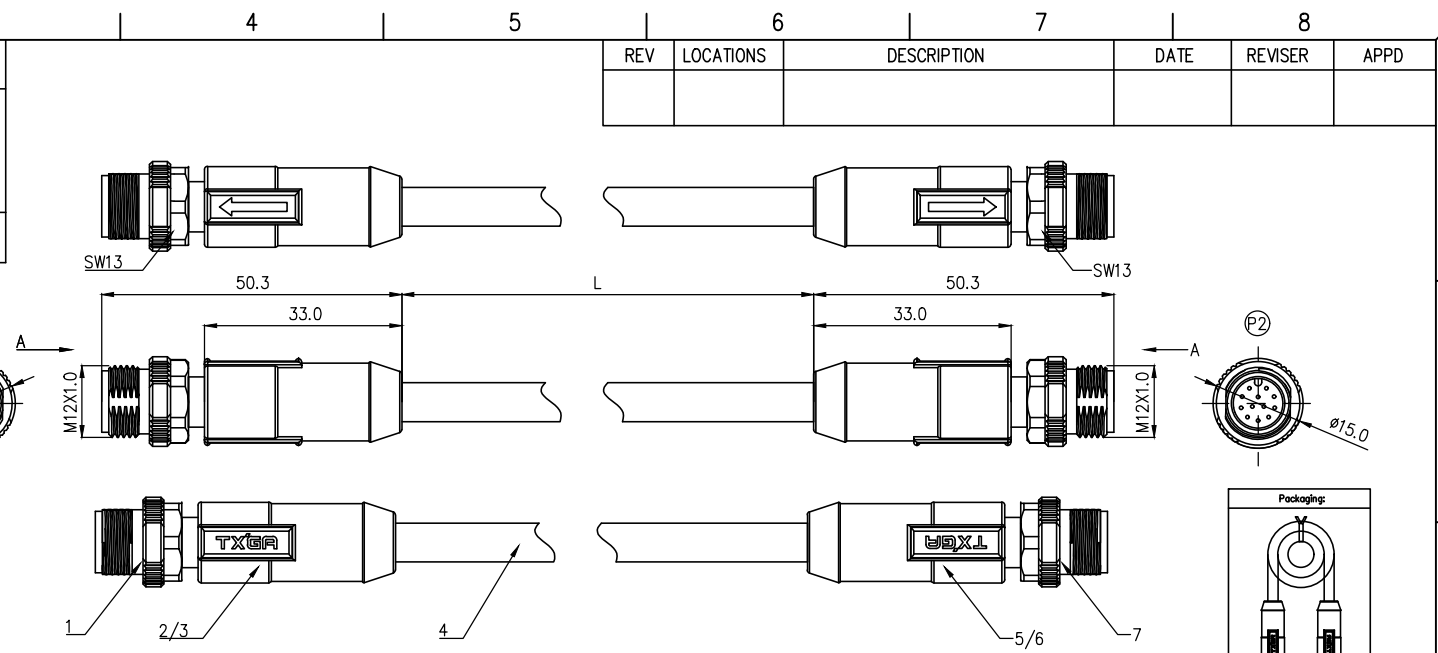


TABLE 1

L (XXXXX)	00050	00100	00150	00200	...	00990
	50mm	100mm	150mm	200mm	...	990mm
	01000	01500	02000	10000	...	99900
	1M	1.5M	2M	10M	...	99.9M
Dimensions L (mm)						
Range(length)	50 to 200	201 to 500	1001 to 5000	5000 to 9000		
Tolerance(mm)	±10	±15	±25	±30		
PACKING SPECIFICATION						
Range(length)	50 to 200	201 to 1000	1001 to 5000			
	5pcs/Bag	2pcs/Bag	1pcs/Bag			

		P1/P2			
		9Circuits	10Circuits	11Circuits	12Circuits
				12	Cyan
				11	Orange
				10	Purple
9	Red	9	Purple	10	Purple
8	Gray	8	Red	9	Red
7	Black	7	Gray	8	Gray
6	Yellow	6	Black	7	Black
5	Pink	5	Yellow	6	Yellow
4	Green	4	Pink	5	Pink
3	White	3	Green	4	Green
2	Blue	2	White	3	White
1	Brown	1	Blue	2	Blue
			Brown	1	Brown
Circuits	wire color	Circuits	wire color	Circuits	wire color

Connector product information					Cable product Information	
Circuits	Rated voltage	Rated impulse voltage	Rated current	Insulation resistance	O.D	Wire Size(mm ²) AWG
9Circuits	30V	800V	1.5A	≥100MΩ	5.5	0.14mm ² /26AWG
10Circuits	30V	800V	1.5A	≥100MΩ	5.5	0.14mm ² /26AWG
11Circuits	30V	800V	1.5A	≥100MΩ	6.0	0.14mm ² /26AWG
12Circuits	30V	800V	1.5A	≥100MΩ	6.0	0.14mm ² /26AWG
7	M12 A-codes (9/10/11/12)circuits male unshielded plug					
6	Overmold:PVC black 30P					
5	Innermold:PVC black 30P					
4	UL 20549 (9C/10C/11C/12C)26AWG, JACKET: BK, PUR					
3	Overmold:PVC black 30P					
2	Innermold:PVC black 30P					
1	M12 A-codes (9/10/11/12)circuits male unshielded plug					

Ordering Information

FM12C 08 08 05 - X XX E XXXXX 00
 1 2 3 4 5 6 7 8

1 Cable type FM12C-M12 Cable
 2 Cable category 08-Male Straight to straight
 3 Mounting thread 08-M12X1.0
 4 Distinction num 05

5 Coded A-A CODED B-B CODED D-D CODED
 6 Circuits 02-2Circuits 03-3Circuits ... 12-12Circuits
 7 Angle-Key E-0°
 8 Cable length XXXXX-(see table1)

ELECTRICAL
1. Withstanding Voltage:DC 300V
2. Conduction Impedance: 3Ω (Max)
3. Insulation Resistance: 10MΩ(Min)

THIRD ANGLE PROJECTION	GENERAL TOLERANCES (UNLESS SPECIFIED)		APPROVE BY LEO	DATE 27/Apr/24	PART NO. FM12C080805-XXXEXXXXX00	ITEM NO. FM12C080805
	X. ±0.30	X.* ±5°	CHECKED BY GISELLE	DATE 27/Apr/24	TITLE M12 cable connector, double male straight end, unshielded, PUR, codes A/B/D, 2~12 circuits	
	X.X ±0.20	X.X.* ±2°	DRAWN BY King	DATE 27/Apr/24	THIS DRAWING CONTAINS INFORMATION THAT IS PROPRIETARY TO TXGA INDUSTRIAL ELECTRONICS(S.Z)CO.,LTD AND SHOULD NOT BE USED WITHOUT WRITTEN PERMISSION	
	X.XX ±0.15	X.XX.* ±1°				
SCALE 1:1	SIZE A4	X.XXX ±0.10	X.XXX.* ±0.5°			

TXGA	
Building Technology Cornerstone	
REV 0	SHEET NO. 3/3