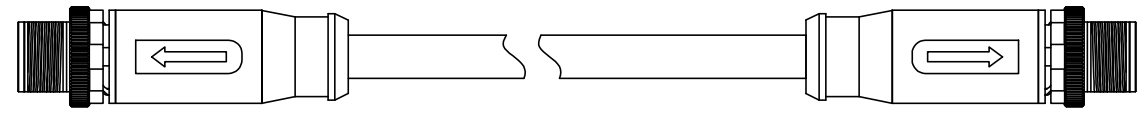
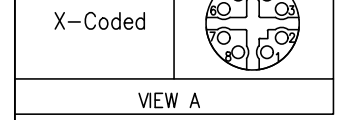


1	2	3	4	5	6	7	8			
Coded	8circuits				REV	LOCATIONS	DESCRIPTION	DATE	REVISER	APPD
X-Coded										



- Note:
1. Waterproof rate: IP67
 2. This product must meet IEC61076-2-109
 3. This product must meet 2011/65/EU ROHS compliance.
 4. Operation temperature: -20°C~85°C
 5. Mechanical operation: > 100 mating cycles
 6. Ethernet CAT6A, 10 Gbps
 7. Flame retardant grade: VW-1
 8. Drag chain cable
 - 8.1. Drag chain radius: 50mm
 - 8.2. Test life (drag chain test): ≥ 10 million times

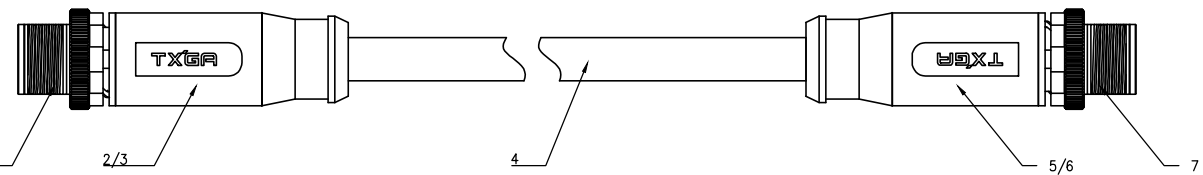
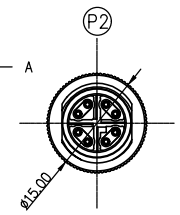
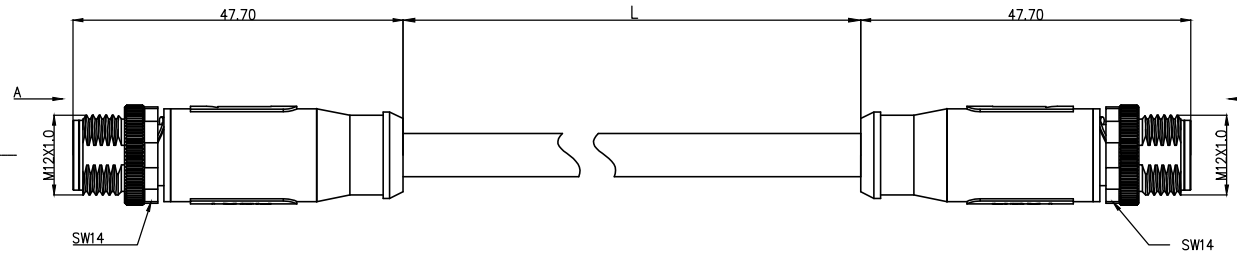
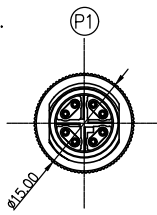


TABLE 1

L (xxxxx)	00050	00100	00150	00200	...	00990
	50mm	100mm	150mm	200mm	...	990mm
	01000	01500	02000	10000	...	99900
	1M	1.5M	2M	10M	...	99.9M
Dimensions L (mm)						
Range(length)	50 to 200	201 to 500	1001 to 5000	5000 to 9000		
Tolerance(mm)	±10	±15	±25	±30		
PACKING SPECIFICATION						
Range(length)	50 to 200	201 to 1000	1001 to 9000			
	5pcs/Bag	2pcs/Bag	1pcs/Bag			

WIRING CHART

P1	COLOR	P2
1	WH/OG	1
2	OG	2
3	WH/GN	3
4	GN	4
5	WH/BN	5
6	BN	6
7	WH/BU	7
8	BU	8
Shell	BRAID	Shell

Connector product information						Cable product Information	
Circuits	Rated Voltage	Rated impulse Voltage	Rated Current	Insulation resistance	Signal type classification	O.D	Wire Size(mm ²) AWG
8Circuits	60V	800V	0.5A	≥100MΩ	CAT6 _A	6.8mm	0.14mm ² / 4P×26AWG
7	M12-X encoded 8circuits shielded male plug						
6	Overmold:PVC black 30P						
5	Innermold:PVC black 30P						
4	CAT6 _A , UL2835 4P×26AWG, AB JACKET:BK, Drag chain cable						
3	Overmold:PVC black 30P						
2	Innermold:PVC black 30P						
1	M12-X encoded 8circuits shielded male plug						

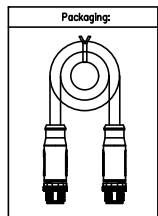
Ordering Information

FM12D 08 08 09 - X 08 E XXXXX 00

1 2 3 4 5 6 7 8

1 Cable type: FM12D-M12 Drag chain cable
 2 Cable category: 08-Male Straight to straight
 3 Mounting thread: 08-M12X1.0
 4 Distinction num: 09

5 Coded: X-X CODED
 6 Circuits: 08-8Circuits
 7 Angle-Key: E-0°
 8 Cable length: XXXXX-(see table1)



ELECTRICAL	
1. Withstanding Voltage:DC 300V	
2. Conduction Impedance: 3Ω (Max)	
3. Insulation Resistance: 10MΩ (Min)	

 THIRD ANGLE PROJECTION DESIGN UNITS METRIC SCALE 1:1 SIZE A4	GENERAL TOLERANCES (UNLESS SPECIFIED)		APPROVE BY	DATE	PART NO.	ITEM NO.
	X. ±0.30	X.* ±5°	LEO	27/Apr/24	FM12D080809-X08EXXXXX00	FM12D080809
	X.X ±0.20	X.X* ±2°	CHECKED BY	DATE	TITLE	
	X.XX ±0.15	X.XX* ±1°	GISELLE	27/Apr/24	M12 cable connector, double male straight end, shielded, PVC, codes X, 8 circuits	
X.XXX ±0.10	X.XXX* ±0.5°	DRAWN BY	DATE	THIS DRAWING CONTAINS INFORMATION THAT IS PROPRIETARY TO TXGA INDUSTRIAL ELECTRONICS(S.Z)CO.,LTD AND SHOULD NOT BE USED WITHOUT WRITTEN PERMISSION		
		King	27/Apr/24			

 Building Technology Cornerstone	
REV 0	SHEET NO. 1/1