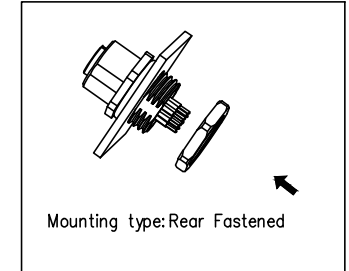
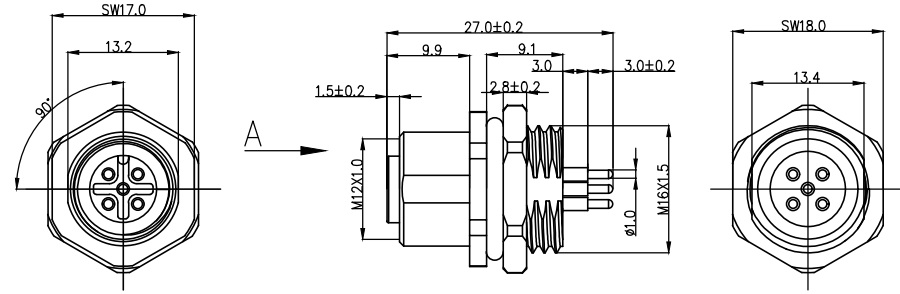
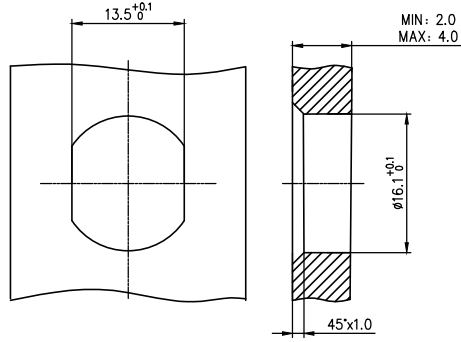


	1	2	3	4	
	Coded	2circuits	3circuits	4circuits	5circuits
A	A-Coded				
	B-Coded				
B	D-Coded				
	VIEW A				



- Note:
1. Waterproof Rate: IP68
 2. This product must meet IEC61076-2-101
 3. This product must meet 2011/65/EU ROHS compliance.
 4. Not note tolerances: ±0.20



2-Circuits PCB hole size	3-Circuits PCB hole size	4-Circuits PCB hole size	5-Circuits PCB hole size

Installation category	PCB
Degree of protection	IP68(in mated condition)
Mechanical operation	> 100 mating cycles
Upper temperature	105°C
Lower temperature	-40°C
Pollution degree	3
Overtoltage categorie	II
Material group	II
Material of contact	CuZn
Contact plating	Au
Material of contact body	PA66
Sealing	EPDM
Material of housing	alloy

Ordering Information

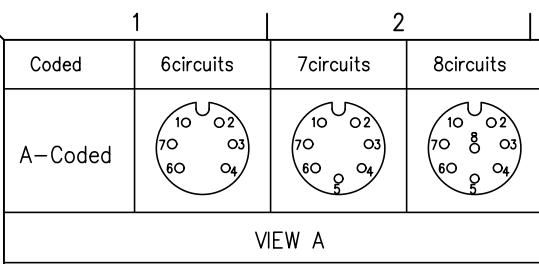
FM12S R11 02 - X XX S 1 XX D 00

1 2 3 4 5 6 7 8 9

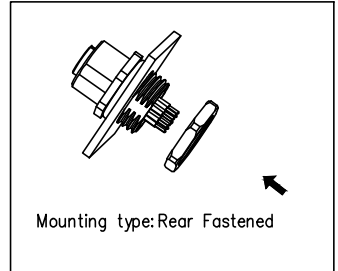
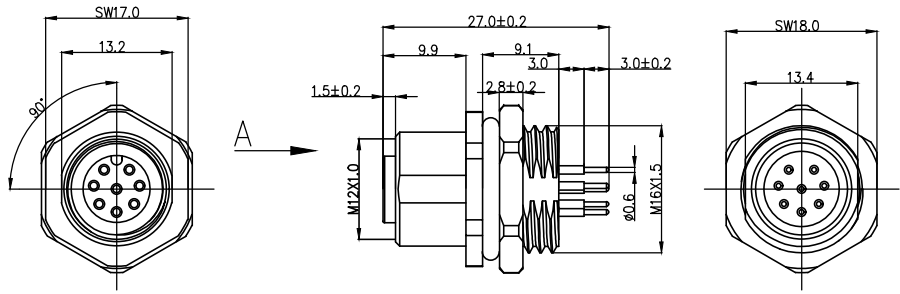
1 Category	2 Mounting thread	3 Distinction num.	4 Coded
FM12S-M12 Socket	R11-Rear mounting M16X1.5	02	A-A CODED B-B CODED D-D CODED
5 Circuits	6 Contact	7 Contact plating	8 Contact plating thickness
02-2Circuits 03-3Circuits ... 17-17Circuits	S-Socket	1-Gold plated	01-0.025µm 03-0.075µm
			9 Wiring type
			D-Through Hole

Circuits	Rated Voltage	Rated impulse Voltage	Rated Current	Contact resistance	Insulation resistance
2Circuits	250V	2500V	4A	≤5mΩ	≥100MΩ
3Circuits	250V	2500V	4A	≤5mΩ	≥100MΩ
4Circuits	250V	2500V	4A	≤5mΩ	≥100MΩ
5Circuits	60V	1500V	4A	≤5mΩ	≥100MΩ

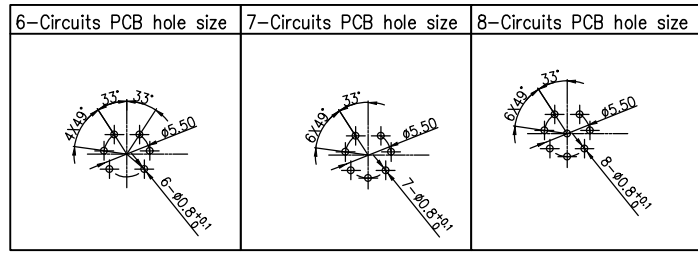
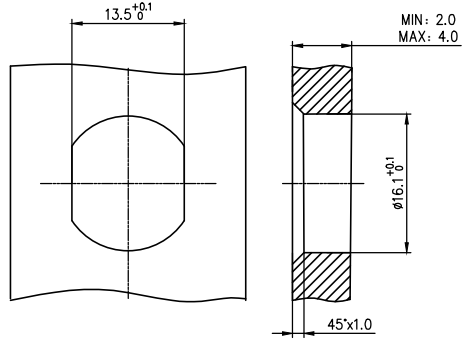
 THIRD ANGLE PROJECTION DESIGN UNITS METRIC SCALE 1:1 SIZE A4	GENERAL TOLERANCES (UNLESS SPECIFIED)		APPROVE BY LEO	DATE 27/Jun/25	PART NO. FM12SR1102-XXXS1XXD00	ITEM NO. FM12SR1102	 Building Technology Cornerstone REV 0 SHEET NO. 1/4
	X. ±0.30	X.* ±5°	CHECKED BY GISELLE	DATE 27/Jun/25	TITLE M12 female socket, unshielded, 2~17 circuits, M16X1.5, rear lock, codes A/B/D		
	X.X ±0.20	X.X* ±2°	DRAWN BY King	DATE 27/Jun/25	THIS DRAWING CONTAINS INFORMATION THAT IS PROPRIETARY TO TXGA INDUSTRIAL ELECTRONICS(S.Z)CO.,LTD AND SHOULD NOT BE USED WITHOUT WRITTEN PERMISSION		



REV	LOCATIONS	DESCRIPTION	DATE	REVISER	APPD



- Note:
1. Waterproof Rate: IP68
 2. This product must meet IEC61076-2-101
 3. This product must meet 2011/65/EU ROHS compliance.
 4. Not note tolerances: ±0.20



Installation category	PCB
Degree of protection	IP68(in mated condition)
Mechanical operation	> 100 mating cycles
Upper temperature	105°C
Lower temperature	-40°C
Pollution degree	3
Overtoltage categorie	II
Material group	II
Material of contact	CuZn
Contact plating	Au
Material of contact body	PA66
Sealing	EPDM
Material of housing	alloy

Recommended Panel Cut-Out

Ordering Information

FM12S R11 02 - X XX S 1 XX D 00
 1 2 3 4 5 6 7 8 9

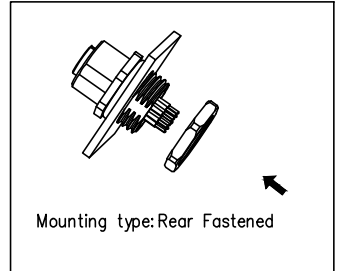
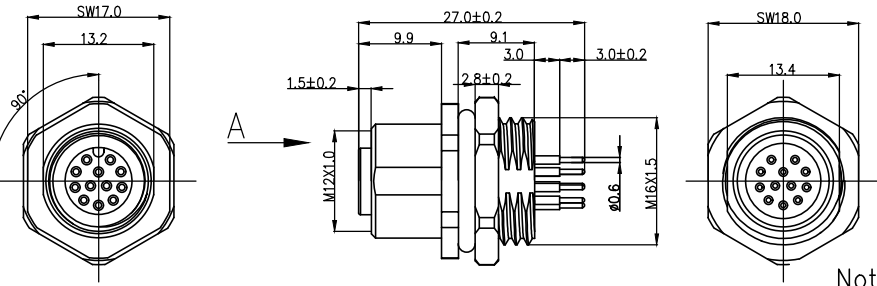
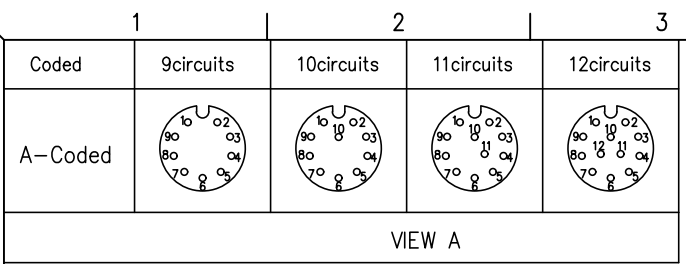
Category	Mounting thread	Distinction num.	Coded
FM12S-M12 Socket	R11-Rear mounting M16X1.5	02	A-A CODED B-B CODED D-D CODED
Circuits	Contact	Contact plating	Contact plating thickness
02-2Circuits 03-3Circuits ... 17-17Circuits	S-Socket	1-Gold plated	01-0.025µm 03-0.075µm
			Wiring type
			D-Through Hole

Circuits	Rated Voltage	Rated impulse Voltage	Rated Current	Contact resistance	Insulation resistance
6Circuits	30V	800V	2A	≤5mΩ	≥100MΩ
7Circuits	30V	800V	2A	≤5mΩ	≥100MΩ
8Circuits	30V	800V	2A	≤5mΩ	≥100MΩ

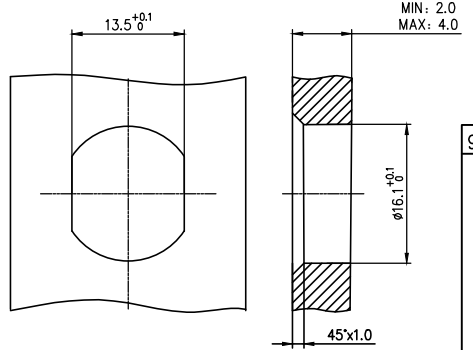
 THIRD ANGLE PROJECTION	GENERAL TOLERANCES (UNLESS SPECIFIED)		APPROVE BY	DATE	PART NO.	ITEM NO.
	X. ±0.30	X.* ±5°	LEO	27/Jun/25	FM12SR1102-XXXS1XXD00	FM12SR1102
DESIGN UNITS	X.X ±0.20	X.X* ±2°	CHECKED BY	DATE	TITLE	
METRIC	X.XX ±0.15	X.XX* ±1°	GISELLE	27/Jun/25	M12 female socket, unshielded, 2~17 circuits, M16X1.5, rear lock, codes A/B/D	
SCALE	X.XXX ±0.10	X.XXX* ±0.5°	DRAWN BY	DATE	THIS DRAWING CONTAINS INFORMATION THAT IS PROPRIETARY TO TXGA INDUSTRIAL ELECTRONICS(S.Z)CO.,LTD AND SHOULD NOT BE USED WITHOUT WRITTEN PERMISSION	
1:1			King	27/Jun/25	REV 0 SHEET NO. 2/4	



Building Technology Cornerstone



Note:
 1. Waterproof Rate: IP68
 2. This product must meet IEC61076-2-101
 3. This product must meet 2011/65/EU ROHS compliance.
 4. Not note tolerances: ±0.20



9-Circuits PCB hole size	10-Circuits PCB hole size	11-Circuits PCB hole size	12-Circuits PCB hole size

Installation category	PCB
Degree of protection	IP68(in mated condition)
Mechanical operation	> 100 mating cycles
Upper temperature	105°C
Lower temperature	-40°C
Pollution degree	3
Overtoltage categorie	II
Material group	II
Material of contact	CuZn
Contact plating	Au
Material of contact body	PA66
Sealing	EPDM
Material of housing	alloy

Ordering Information

FM12S R11 02 - X XX S 1 XX D 00
 1 2 3 4 5 6 7 8 9

1 Category FM12S-M12 Socket	2 Mounting thread R11-Rear mounting M16X1.5	3 Distinction num. 02	4 Coded A-A CODED B-B CODED D-D CODED
5 Circuits 02-2Circuits 03-3Circuits ... 17-17Circuits	6 Contact S-Socket	7 Contact plating 1-Gold plated	8 Contact plating thickness 01-0.025µm 03-0.075µm
			9 Wiring type D-Through Hole

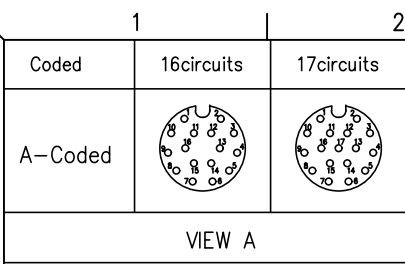
Circuits	Rated Voltage	Rated impulse Voltage	Rated Current	Contact resistance	Insulation resistance
9Circuits	30V	800V	1.5A	≤5mΩ	≥100MΩ
10Circuits	30V	800V	1.5A	≤5mΩ	≥100MΩ
11Circuits	30V	800V	1.5A	≤5mΩ	≥100MΩ
12Circuits	30V	800V	1.5A	≤5mΩ	≥100MΩ

THIRD ANGLE PROJECTION	GENERAL TOLERANCES (UNLESS SPECIFIED)	APPROVE BY LEO	DATE 27/Jun/25	PART NO. FM12SR1102-XXXS1XXD00	ITEM NO. FM12SR1102
DESIGN UNITS METRIC	X. ±0.30 X.* ±5° X.X ±0.20 X.XX ±2° X.XX ±0.15 X.XX ±1° X.XXX ±0.10 X.XXX ±0.5°	CHECKED BY GISELLE	DATE 27/Jun/25	TITLE M12 female socket, unshielded, 2~17 circuits, M16X1.5, rear lock, codes A/B/D	
SCALE 1:1	SIZE A4	DRAWN BY King	DATE 27/Jun/25	THIS DRAWING CONTAINS INFORMATION THAT IS PROPRIETARY TO TXGA INDUSTRIAL ELECTRONICS(S.Z)CO.,LTD AND SHOULD NOT BE USED WITHOUT WRITTEN PERMISSION	

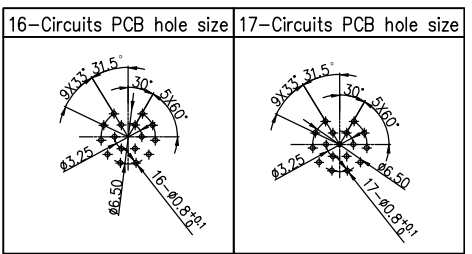
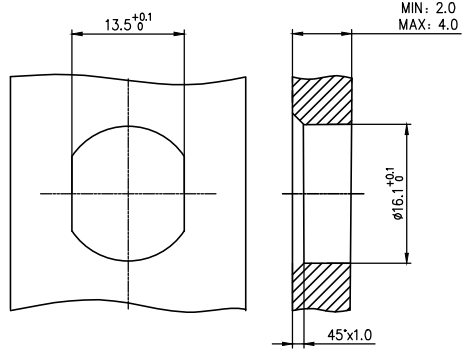
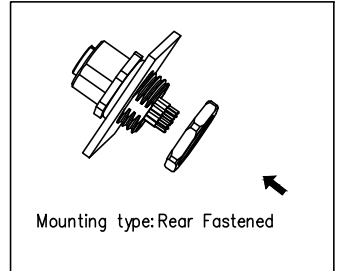
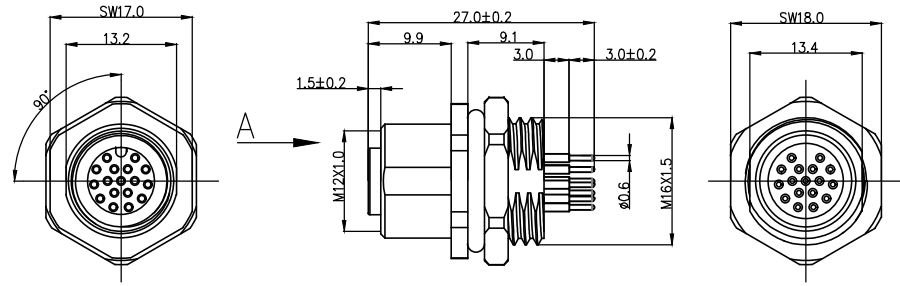


Building Technology Cornerstone

REV 0 SHEET NO. 3/4



REV	LOCATIONS	DESCRIPTION	DATE	REVISER	APPD



Note:
 1. Waterproof Rate: IP68
 2. This product must meet IEC61076-2-101
 3. This product must meet 2011/65/EU ROHS compliance.
 4. Not note tolerances: ±0.20

Installation category	PCB
Degree of protection	IP68(in mated condition)
Mechanical operation	> 100 mating cycles
Upper temperature	105°C
Lower temperature	-40°C
Pollution degree	3
Overtoltage categorie	II
Material group	II
Material of contact	CuZn
Contact plating	Au
Material of contact body	PA66
Sealing	EPDM
Material of housing	alloy

Ordering Information

FM12S R11 02 - X XX S 1 XX D 00
 1 2 3 4 5 6 7 8 9

- | | | | |
|--|--|--------------------------------------|---|
| 1 Category
FM12S-M12 Socket | 2 Mounting thread
R11-Rear mounting M16X1.5 | 3 Distinction num.
02 | 4 Coded
A-A CODED
B-B CODED
D-D CODED |
| 5 Circuits
02-2Circuits
03-3Circuits
...
17-17Circuits | 6 Contact
S-Socket | 7 Contact plating
1-Gold plated | 8 Contact plating thickness
01-0.025µm
03-0.075µm |
| | | | 9 Wiring type
D-Through Hole |

Circuits	Rated Voltage	Rated impulse Voltage	Rated Current	Contact resistance	Insulation resistance
16Circuits	30V	800V	1.5A	≤5mΩ	≥100MΩ
17Circuits	30V	800V	1.5A	≤5mΩ	≥100MΩ

THIRD ANGLE PROJECTION	GENERAL TOLERANCES (UNLESS SPECIFIED)		APPROVE BY LEO	DATE 27/Jun/25	PART NO. FM12SR1102-XXXS1XXD00	ITEM NO. FM12SR1102	 Building Technology Cornerstone
	DESIGN UNITS METRIC	X. ±0.30	X.* ±5°	CHECKED BY GISELLE	DATE 27/Jun/25	TITLE M12 female socket, unshielded, 2~17 circuits, M16X1.5, rear lock, codes A/B/D	
SCALE 1:1	SIZE A4	X.XX ±0.15	X.XX' ±1°	DRAWN BY King	DATE 27/Jun/25	THIS DRAWING CONTAINS INFORMATION THAT IS PROPRIETARY TO TXGA INDUSTRIAL ELECTRONICS(S.Z)CO.,LTD AND SHOULD NOT BE USED WITHOUT WRITTEN PERMISSION	