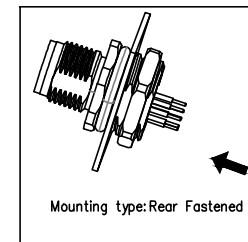
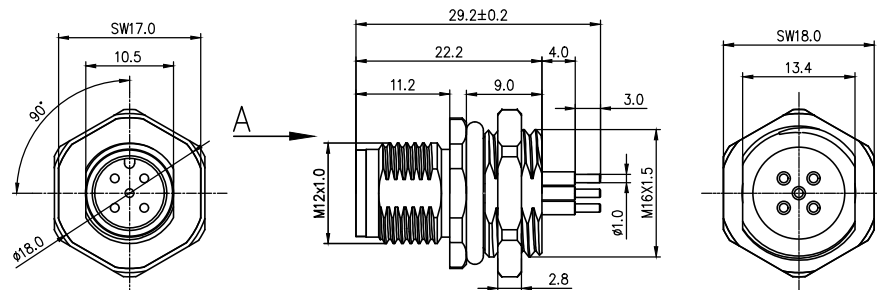
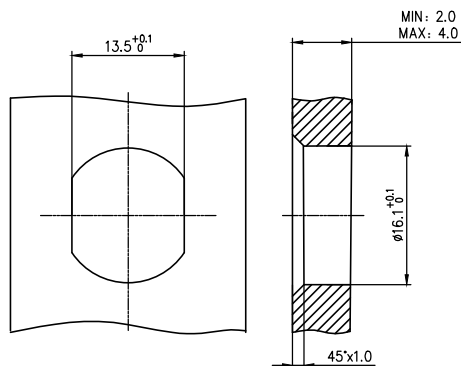


	1	2	3	4	5	6	7	8			
	Coded	2circuits	3circuits	4circuits	5circuits	REV	LOCATIONS	DESCRIPTION	DATE	REVISER	APPD
A	A-Coded										
	B-Coded										
B	D-Coded										
	VIEW A										



- Note:
- 1.Waterproof Rate:IP68
 - 2.This product must meet IEC61076-2-101
 - 3.This product must meet 2011/65/EU ROHS compliance.
 - 4.Not note tolerances:±0.20



2-core PCB hole size	3-core PCB hole size	4-core PCB hole size	5-core PCB hole size

Recommended Panel Cut-Out

Ordering Information

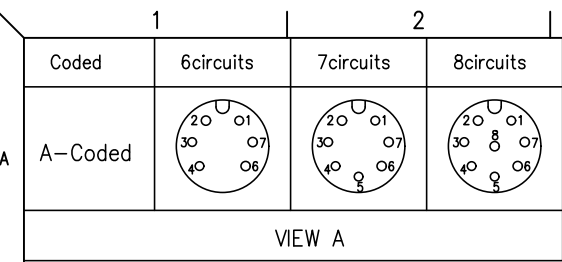
FM12SR11 06 - X XX P 1 XX D 00
 1 2 3 4 5 6 7 8 9

1 Category FM12S-M12 Socket	2 Mounting thread R11-Rear mounting M16X1.5	3 Distinction num. 06	4 Coded A-A CODED B-B CODED D-D CODED
5 Circuits 02-2Circuits 03-3Circuits ... 17-17Circuits	6 Contact P-Pin	7 Contact plating 1-Gold plated	8 Contact plating thickness 01-0.025µm 03-0.075µm
			9 Wiring type D-Through Hole

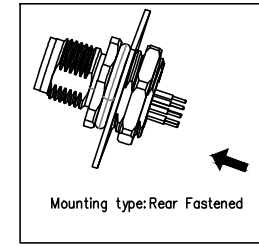
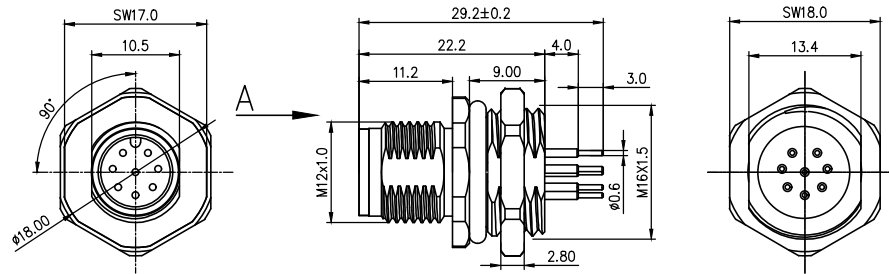
Circuits	Rated voltage	Rated impulse voltage	Rated current	Contact resistance	Insulation resistance
2Circuits	250V	2500V	4A	≤5mΩ	≥100MΩ
3Circuits	250V	2500V	4A	≤5mΩ	≥100MΩ
4Circuits	250V	2500V	4A	≤5mΩ	≥100MΩ
5Circuits	60V	1500V	4A	≤5mΩ	≥100MΩ

Installation category	PCB
Degree of protection	IP68(in mated condition)
Mechanical operation	> 100 mating cycles
Upper temperature	105°C
Lower temperature	-40°C
Pollution degree	3
Overvoltage categorie	II
Material group	II
Material of contact	CuZn
Contact plating	Au
Material of contact body	PA66
Sealing	EPDM
Material of housing	alloy

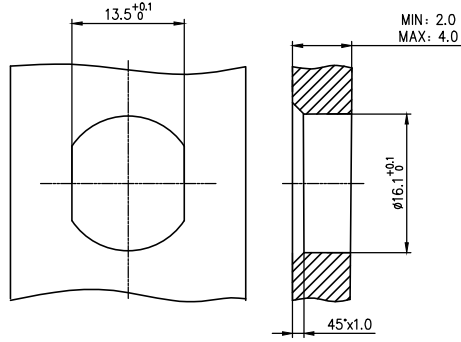
 THIRD ANGLE PROJECTION DESIGN UNITS METRIC SCALE 1:1 SIZE A4	GENERAL TOLERANCES (UNLESS SPECIFIED) X.X ±0.30 X.* ±5' X.XX ±0.20 X.X' ±2' X.XX ±0.15 X.XX' ±1' X.XXX ±0.10 X.XXX' ±0.5'		APPROVE BY LEO CHECKED BY GISELLE DRAWN BY King	DATE 27/Apr/24 DATE 27/Apr/24 DATE 27/Apr/24	PART NO. FM12SR1106-XXXP1XXD00 TITLE M12 male socket, unshielded, through-hole welding, 2~17 circuits, M16X1.5, rear lock, codes A/B/D, double flat position THIS DRAWING CONTAINS INFORMATION THAT IS PROPRIETARY TO TXGA INDUSTRIAL ELECTRONICS(S.Z)CO.,LTD AND SHOULD NOT BE USED WITHOUT WRITTEN PERMISSION	ITEM NO. FM12SR1106 Building Technology Cornerstone REV 0 SHEET NO. 1/4	 Building Technology Cornerstone
--	---	--	--	---	---	--	-------------------------------------



VIEW A



- Note:
- 1.Waterproof Rate:IP68
 - 2.This product must meet IEC61076-2-101
 - 3.This product must meet 2011/65/EU ROHS compliance.
 - 4.Not note tolerances:±0.20



Recommended Panel Cut-Out

6-core PCB hole size	7-core PCB hole size	8-core PCB hole size

Installation category	PCB
Degree of protection	IP68(in mated condition)
Mechanical operation	> 100 mating cycles
Upper temperature	105°C
Lower temperature	-40°C
Pollution degree	3
Overvoltage categorie	II
Material group	II
Material of contact	CuZn
Contact plating	Au
Material of contact body	PA66
Sealing	EPDM
Material of housing	alloy

Ordering Information

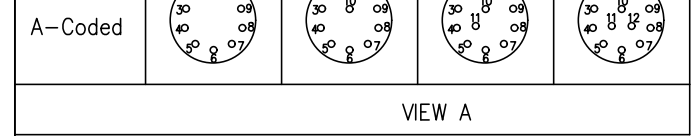
FM12SR11 06 - X XX P 1 XX D 00
 1 2 3 4 5 6 7 8 9

- | | | | |
|--|--|------------------------------------|---|
| 1 Category
FM12S-M12 Socket | 2 Mounting thread
R11-Rear mounting M16X1.5 | 3 Distinction num.
06 | 4 Coded
A-A CODED
B-B CODED
D-D CODED |
| 5 Circuits
02-2Circuits
03-3Circuits
...
17-17Circuits | 6 Contact
P-Pin | 7 Contact plating
1-Gold plated | 8 Contact plating thickness
01-0.025µm
03-0.075µm |
| | | | 9 Wiring type
D-Through Hole |

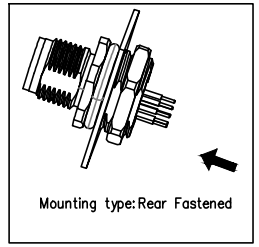
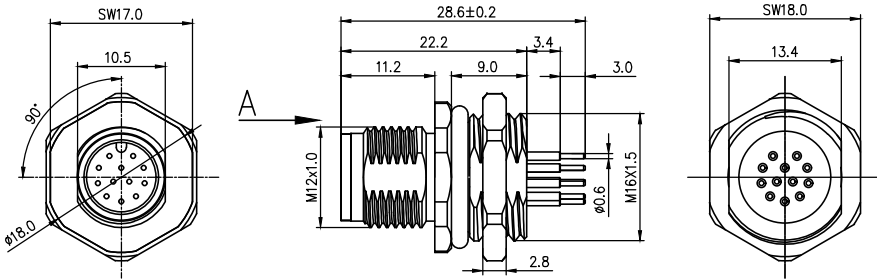
Circuits	Rated voltage	Rated impulse voltage	Rated current	Contact resistance	Insulation resistance
6Circuits	30V	800V	2A	≤5mΩ	≥100MΩ
7Circuits	30V	800V	2A	≤5mΩ	≥100MΩ
8Circuits	30V	800V	2A	≤5mΩ	≥100MΩ

<p>THIRD ANGLE PROJECTION</p>	GENERAL TOLERANCES (UNLESS SPECIFIED)		APPROVE BY LEO	DATE 27/Apr/24	PART NO. FM12SR1106-XXXP1XXD00	ITEM NO. FM12SR1106	<p>Building Technology Cornerstone</p>
	DESIGN UNITS METRIC	X. ±0.30	X.* ±5°	CHECKED BY GISELLE	DATE 27/Apr/24	TITLE M12 male socket, unshielded, through-hole welding, 2~17 circuits, M16X1.5, rear lock, codes A/B/D, double flat position	
SCALE 1:1	SIZE A4	X.XX ±0.15	X.XX* ±1°	DRAWN BY King	DATE 27/Apr/24	THIS DRAWING CONTAINS INFORMATION THAT IS PROPRIETARY TO TXGA INDUSTRIAL ELECTRONICS(S.Z)CO.,LTD AND SHOULD NOT BE USED WITHOUT WRITTEN PERMISSION	

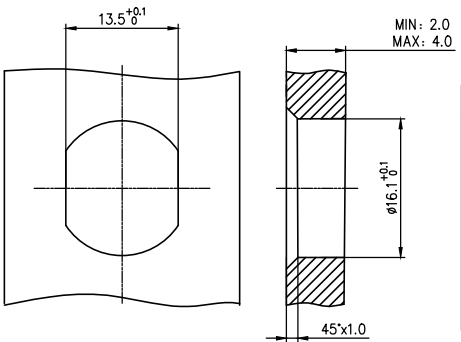
1	2	3	4	5	6	7	8			
Coded	9circuits	10circuits	11circuits	12circuits	REV	LOCATIONS	DESCRIPTION	DATE	REVISER	APPD



VIEW A



- Note:
- 1.Waterproof Rate:IP68
 - 2.This product must meet IEC61076-2-101
 - 3.This product must meet 2011/65/EU ROHS compliance.
 - 4.Not note tolerances:±0.20



Recommended Panel Cut-Out

9-core PCB hole size	10-core PCB hole size	11-core PCB hole size	12-core PCB hole size

Installation category	PCB
Degree of protection	IP68(in mated condition)
Mechanical operation	> 100 mating cycles
Upper temperature	105°C
Lower temperature	-40°C
Pollution degree	3
Overtoltage categorie	II
Material group	II
Material of contact	CuZn
Contact plating	Au
Material of contact body	PA66
Sealing	EPDM
Material of housing	alloy

Ordering Information

FM12SR11 06 - X XX P 1 XX D 00
 1 2 3 4 5 6 7 8 9

- | | | | |
|--|--|--------------------------------------|---|
| 1 Category
FM12S-M12 Socket | 2 Mounting thread
R11-Rear mounting M16X1.5 | 3 Distinction num.
06 | 4 Coded
A-A CODED
B-B CODED
D-D CODED |
| 5 Circuits
02-2Circuits
03-3Circuits
...
17-17Circuits | 6 Contact
P-Pin | 7 Contact plating
1-Gold plated | 8 Contact plating thickness
01-0.025µm
03-0.075µm |
| | | | 9 Wiring type
D-Through Hole |

Circuits	Rated voltage	Rated impulse voltage	Rated current	Contact resistance	Insulation resistance
9Circuits	30V	800V	1.5A	≤5mΩ	≥100MΩ
10Circuits	30V	800V	1.5A	≤5mΩ	≥100MΩ
11Circuits	30V	800V	1.5A	≤5mΩ	≥100MΩ
12Circuits	30V	800V	1.5A	≤5mΩ	≥100MΩ

<p>THIRD ANGLE PROJECTION</p>	GENERAL TOLERANCES (UNLESS SPECIFIED)		APPROVE BY LEO	DATE 27/Apr/24	PART NO. FM12SR1106-XXXP1XXD00	ITEM NO. FM12SR1106	<p>Building Technology Cornerstone</p>
	DESIGN UNITS METRIC	X. ±0.30	X.* ±5°	CHECKED BY GISELLE	DATE 27/Apr/24	TITLE M12 male socket, unshielded, through-hole welding, 2~17 circuits, M16X1.5, rear lock, codes A/B/D, double flat position	
SCALE 1:1	SIZE A4	X.XX ±0.15	X.XX* ±1°	DRAWN BY King	DATE 27/Apr/24	THIS DRAWING CONTAINS INFORMATION THAT IS PROPRIETARY TO TXGA INDUSTRIAL ELECTRONICS(S.Z)CO.,LTD AND SHOULD NOT BE USED WITHOUT WRITTEN PERMISSION	

