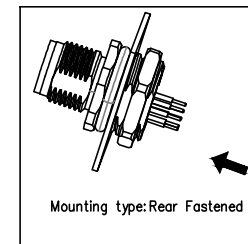
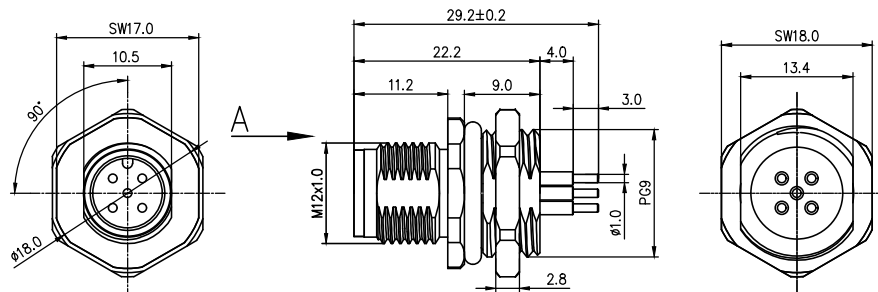
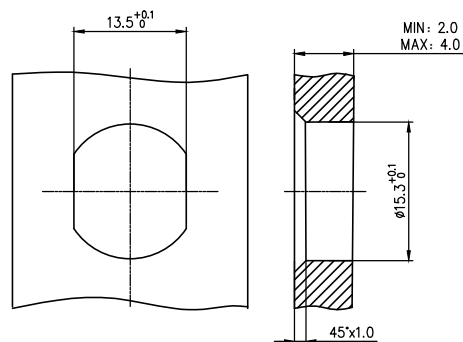


	1	2	3	4	5	6	7	8			
	Coded	2circuits	3circuits	4circuits	5circuits	REV	LOCATIONS	DESCRIPTION	DATE	REVISER	APPD
A	A-Coded										
	B-Coded										
B	D-Coded										
	VIEW A										



- Note:
- 1.Waterproof Rate:IP68
 - 2.This product must meet IEC61076-2-101
 - 3.This product must meet 2011/65/EU ROHS compliance.
 - 4.Not note tolerances:±0.20



Recommended Panel Cut-Out

2-core PCB hole size	3-core PCB hole size	4-core PCB hole size	5-core PCB hole size

Installation category	PCB
Degree of protection	IP68(in mated condition)
Mechanical operation	> 100 mating cycles
Upper temperature	105°C
Lower temperature	-40°C
Pollution degree	3
Overtoltage categorie	II
Material group	II
Material of contact	CuZn
Contact plating	Au
Material of contact body	PA66
Sealing	EPDM
Material of housing	alloy

Ordering Information

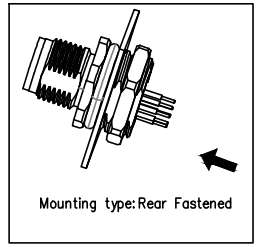
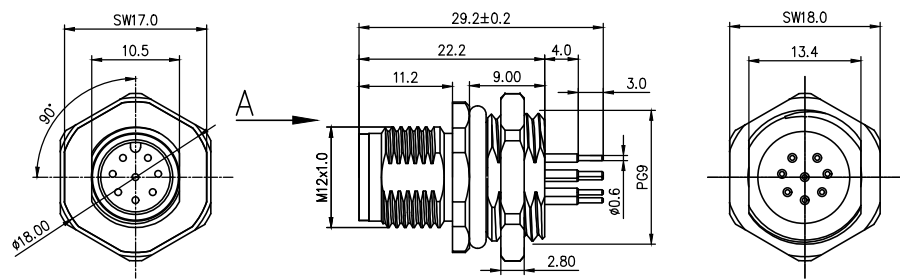
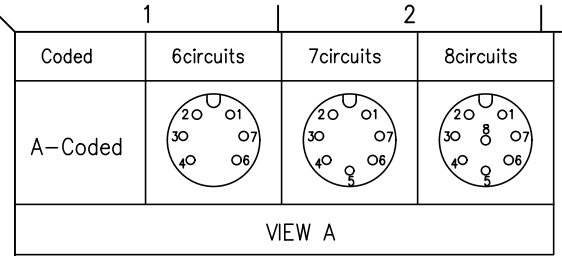
FM12SR15 06 - X XX P 1 XX D 00

1 2 3 4 5 6 7 8 9

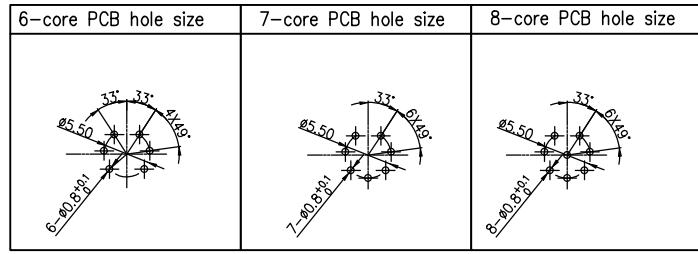
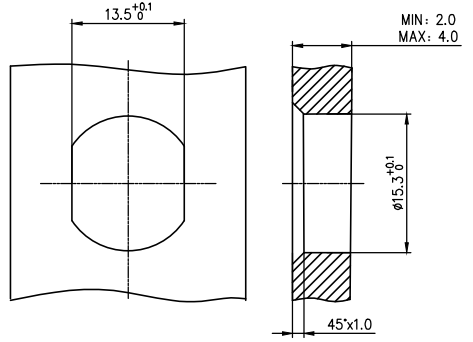
1 Category FM12S-M12 Socket	2 Mounting thread R15-Rear mounting PG9	3 Distinction num. 06	4 Coded A-A CODED B-B CODED D-D CODED
5 Circuits 02-2Circuits 03-3Circuits ... 17-17Circuits	6 Contact P-Pin	7 Contact plating 1-Gold plated	8 Contact plating thickness 01-0.025µm 03-0.075µm
			9 Wiring type D-Through Hole

Circuits	Rated voltage	Rated impulse voltage	Rated current	Contact resistance	Insulation resistance
2Circuits	250V	2500V	4A	≤5mΩ	≥100MΩ
3Circuits	250V	2500V	4A	≤5mΩ	≥100MΩ
4Circuits	250V	2500V	4A	≤5mΩ	≥100MΩ
5Circuits	60V	1500V	4A	≤5mΩ	≥100MΩ

 THIRD ANGLE PROJECTION DESIGN UNITS METRIC SCALE 1:1 SIZE A4	GENERAL TOLERANCES (UNLESS SPECIFIED)		APPROVE BY LEO	DATE 27/Apr/24	PART NO. FM12SR1506-XXXP1XXD00	ITEM NO. FM12SR1506	 Building Technology Cornerstone REV 0 SHEET NO. 1/4
	X. ±0.30	X.* ±5°	CHECKED BY GISELLE	DATE 27/Apr/24	TITLE M12 male socket, unshielded, through-hole welding, 2~17 circuits, PG9, front lock, codes A/B/D, double flat position		
	X.X ±0.20	X.X* ±2°			THIS DRAWING CONTAINS INFORMATION THAT IS PROPRIETARY TO TXGA INDUSTRIAL ELECTRONICS(S.Z)CO.,LTD AND SHOULD NOT BE USED WITHOUT WRITTEN PERMISSION		
	X.XX ±0.15	X.XX* ±1°	DRAWN BY King	DATE 27/Apr/24			
	X.XXX ±0.10	X.XXX* ±0.5°					



- Note:
- 1.Waterproof Rate:IP68
 - 2.This product must meet IEC61076-2-101
 - 3.This product must meet 2011/65/EU ROHS compliance.
 - 4.Not note tolerances:±0.20



Installation category	PCB
Degree of protection	IP68(in mated condition)
Mechanical operation	> 100 mating cycles
Upper temperature	105°C
Lower temperature	-40°C
Pollution degree	3
Overtoltage categorie	II
Material group	II
Material of contact	CuZn
Contact plating	Au
Material of contact body	PA66
Sealing	EPDM
Material of housing	alloy

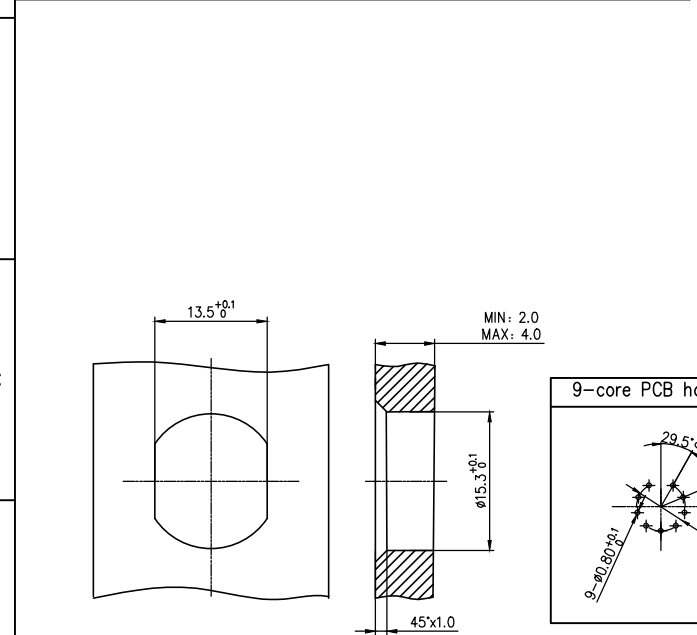
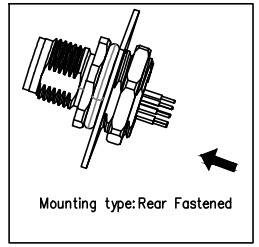
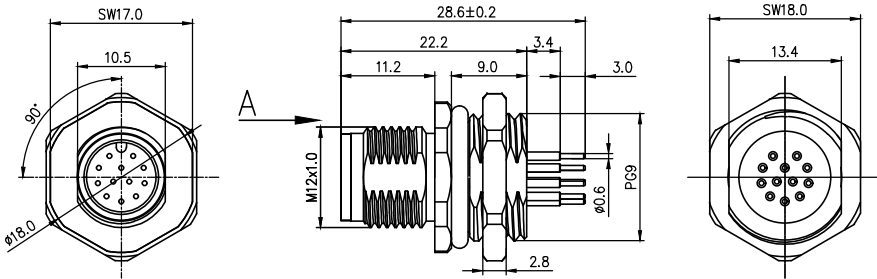
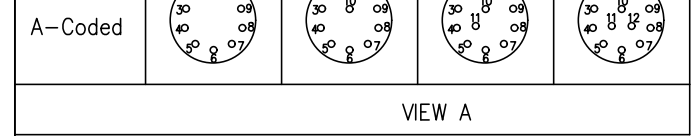
Ordering Information

FM12SR15 06 - X XX P 1 XX D 00
 1 2 3 4 5 6 7 8 9

- | | | | |
|--|--|--------------------------------------|---|
| 1 Category
FM12S-M12 Socket | 2 Mounting thread
R15-Rear mounting PG9 | 3 Distinction num.
06 | 4 Coded
A-A CODED
B-B CODED
D-D CODED |
| 5 Circuits
02-2Circuits
03-3Circuits
...
17-17Circuits | 6 Contact
P-Pin | 7 Contact plating
1-Gold plated | 8 Contact plating thickness
01-0.025μm
03-0.075μm |
| | | | 9 Wiring type
D-Through Hole |

Circuits	Rated voltage	Rated impulse voltage	Rated current	Contact resistance	Insulation resistance
6Circuits	30V	800V	2A	≤5mΩ	≥100MΩ
7Circuits	30V	800V	2A	≤5mΩ	≥100MΩ
8Circuits	30V	800V	2A	≤5mΩ	≥100MΩ

THIRD ANGLE PROJECTION	GENERAL TOLERANCES (UNLESS SPECIFIED)		APPROVE BY LEO	DATE 27/Apr/24	PART NO. FM12SR1506-XXXP1XXD00	ITEM NO. FM12ST1506	
	X. ±0.30	X.* ±5°	CHECKED BY GISELLE	DATE 27/Apr/24	TITLE M12 male socket, unshielded, through-hole welding, 2~17 circuits, PG9, rear lock, codes A/B/D, double flat position		
DESIGN UNITS METRIC	X.X ±0.20	X.X' ±2°	DRAWN BY King		DATE 27/Apr/24	REV 0 SHEET NO. 2/4 THIS DRAWING CONTAINS INFORMATION THAT IS PROPRIETARY TO TXGA INDUSTRIAL ELECTRONICS(S.Z)CO.,LTD AND SHOULD NOT BE USED WITHOUT WRITTEN PERMISSION	
SCALE 1:1	SIZE A4	X.XX ±0.15	X.XX' ±1°				
		X.XXX ±0.10	X.XXX' ±0.5°				



9-core PCB hole size	10-core PCB hole size	11-core PCB hole size	12-core PCB hole size

Note:

- 1.Waterproof Rate:IP68
- 2.This product must meet IEC61076-2-101
- 3.This product must meet 2011/65/EU ROHS compliance.
- 4.Not note tolerances:±0.20

Installation category	PCB
Degree of protection	IP68(in mated condition)
Mechanical operation	> 100 mating cycles
Upper temperature	105°C
Lower temperature	-40°C
Pollution degree	3
Overvoltage categorie	II
Material group	II
Material of contact	CuZn
Contact plating	Au
Material of contact body	PA66
Sealing	EPDM
Material of housing	alloy

Ordering Information

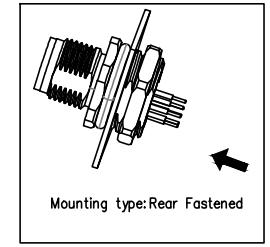
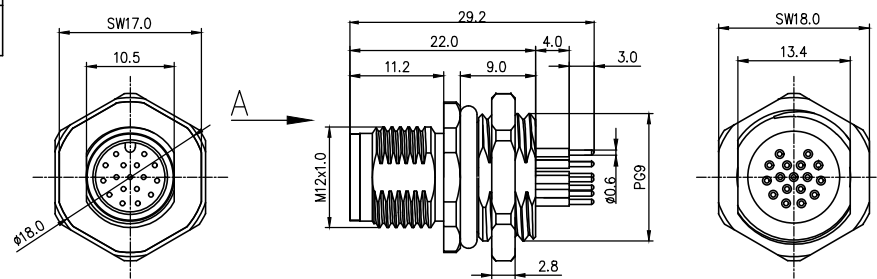
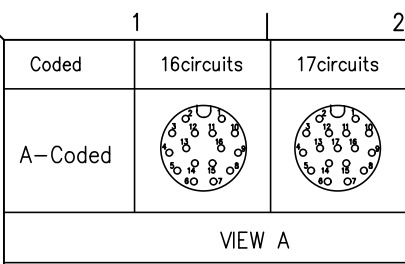
FM12SR15 06 - X XX P 1 XX D 00

1 2 3 4 5 6 7 8 9

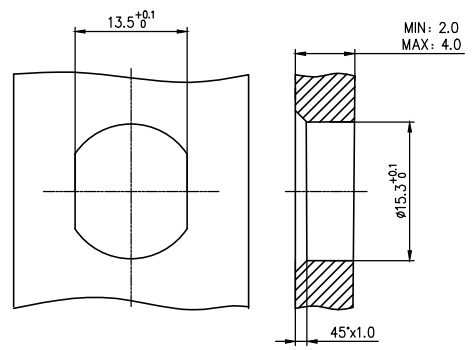
- | | | | |
|---|---|---|--|
| <p>1 Category</p> <p>FM12S-M12 Socket</p> | <p>2 Mounting thread</p> <p>R15-Rear mounting PG9</p> | <p>3 Distinction num.</p> <p>06</p> | <p>4 Coded</p> <p>A-A CODED</p> <p>B-B CODED</p> <p>D-D CODED</p> |
| <p>5 Circuits</p> <p>02-2Circuits</p> <p>03-3Circuits</p> <p>...</p> <p>17-17Circuits</p> | <p>6 Contact</p> <p>P-Pin</p> | <p>7 Contact plating</p> <p>1-Gold plated</p> | <p>8 Contact plating thickness</p> <p>01-0.025µm</p> <p>03-0.075µm</p> |
| <p>9 Wiring type</p> <p>D-Through Hole</p> | | | |

Circuits	Rated voltage	Rated impulse voltage	Rated current	Contact resistance	Insulation resistance
9Circuits	30V	800V	1.5A	≤5mΩ	≥100MΩ
10Circuits	30V	800V	1.5A	≤5mΩ	≥100MΩ
11Circuits	30V	800V	1.5A	≤5mΩ	≥100MΩ
12Circuits	30V	800V	1.5A	≤5mΩ	≥100MΩ

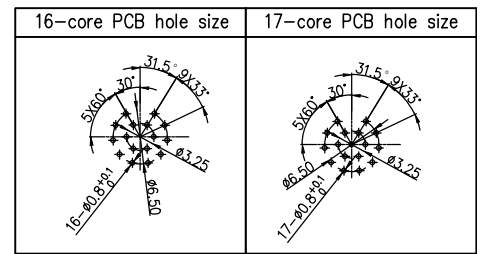
<p>THIRD ANGLE PROJECTION</p>	<p>GENERAL TOLERANCES (UNLESS SPECIFIED)</p> <table style="width:100%; border-collapse: collapse;"> <tr> <td style="border: 1px solid black;">X. ±0.30</td> <td style="border: 1px solid black;">X.* ±5°</td> </tr> <tr> <td style="border: 1px solid black;">X.X ±0.20</td> <td style="border: 1px solid black;">X.XX* ±2°</td> </tr> <tr> <td style="border: 1px solid black;">X.XX ±0.15</td> <td style="border: 1px solid black;">X.XX* ±1°</td> </tr> <tr> <td style="border: 1px solid black;">X.XXX ±0.10</td> <td style="border: 1px solid black;">X.XXX* ±0.5°</td> </tr> </table>	X. ±0.30	X.* ±5°	X.X ±0.20	X.XX* ±2°	X.XX ±0.15	X.XX* ±1°	X.XXX ±0.10	X.XXX* ±0.5°	<p>APPROVE BY</p> <p>LEO</p>	<p>DATE</p> <p>27/Apr/24</p>	<p>PART NO.</p> <p>FM12SR1506-XXXP1XXD00</p>	<p>ITEM NO.</p> <p>FM12SR1506</p>	<p style="text-align:center;">Building Technology Cornerstone</p>
X. ±0.30	X.* ±5°													
X.X ±0.20	X.XX* ±2°													
X.XX ±0.15	X.XX* ±1°													
X.XXX ±0.10	X.XXX* ±0.5°													
<p>DESIGN UNITS</p> <p>METRIC</p>	<p>CHECKED BY</p> <p>GISELLE</p>	<p>DATE</p> <p>27/Apr/24</p>	<p>TITLE</p> <p>M12 male socket, unshielded, through-hole welding, 2~17 circuits, PG9, rear lock, codes A/B/D, double flat position</p>		<p>REV 0</p>	<p>SHEET NO. 3/4</p>								
<p>SCALE</p> <p>1:1</p>	<p>SIZE</p> <p>A4</p>	<p>DRAWN BY</p> <p>King</p>	<p>DATE</p> <p>27/Apr/24</p>	<p>THIS DRAWING CONTAINS INFORMATION THAT IS PROPRIETARY TO TXGA INDUSTRIAL ELECTRONICS(S.Z)CO.,LTD AND SHOULD NOT BE USED WITHOUT WRITTEN PERMISSION</p>										



- Note:
- 1.Waterproof Rate:IP68
 - 2.This product must meet IEC61076-2-101
 - 3.This product must meet 2011/65/EU ROHS compliance.
 - 4.Not note tolerances:±0.20



Recommended Panel Cut-Out



Installation category	PCB
Degree of protection	IP68(in mated condition)
Mechanical operation	> 100 mating cycles
Upper temperature	105°C
Lower temperature	-40°C
Pollution degree	3
Overvoltage categorie	II
Material group	II
Material of contact	CuZn
Contact plating	Au
Material of contact body	PA66
Sealing	EPDM
Material of housing	alloy

Ordering Information

FM12SR15 06 - X XX P 1 XX D 00
 1 2 3 4 5 6 7 8 9

- | | | | |
|--|--|--------------------------------------|---|
| 1 Category
FM12S-M12 Socket | 2 Mounting thread
R15-Rear mounting PG9 | 3 Distinction num.
06 | 4 Coded
A-A CODED
B-B CODED
D-D CODED |
| 5 Circuits
02-2Circuits
03-3Circuits
...
17-17Circuits | 6 Contact
P-Pin | 7 Contact plating
1-Gold plated | 8 Contact plating thickness
01-0.025µm
03-0.075µm |
| | | | 9 Wiring type
D-Through Hole |

Circuits	Rated voltage	Rated impulse voltage	Rated current	Contact resistance	Insulation resistance
16Circuits	30V	800V	1.5A	≤5mΩ	≥100MΩ
17Circuits	30V	800V	1.5A	≤5mΩ	≥100MΩ
THIRD ANGLE PROJECTION	GENERAL TOLERANCES (UNLESS SPECIFIED)		APPROVE BY	DATE	PART NO.
	X. ±0.30	X.* ±5°	LEO	27/Apr/24	FM12SR1506-XXXP1XXD00
DESIGN UNITS METRIC	X.X ±0.20	X.X' ±2°	CHECKED BY	DATE	ITEM NO.
	X.XX ±0.15	X.XX' ±1°	GISELLE	27/Apr/24	FM12SR1506
SCALE 1:1	SIZE A4	X.XXX ±0.10	X.XXX' ±0.5°	DRAWN BY	DATE
				King	27/Apr/24

TITLE: M12 male socket, unshielded, through-hole welding, 2~17 circuits, PG9, rear lock, codes A/B/D, double flat position

THIS DRAWING CONTAINS INFORMATION THAT IS PROPRIETARY TO TXGA INDUSTRIAL ELECTRONICS(S.Z)CO.,LTD AND SHOULD NOT BE USED WITHOUT WRITTEN PERMISSION

REV 0 SHEET NO. 4/4

TXGA
Building Technology Cornerstone