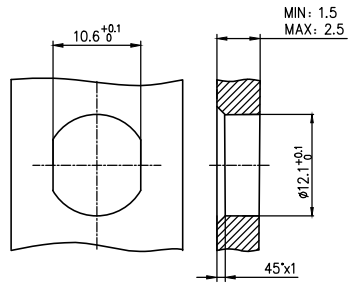
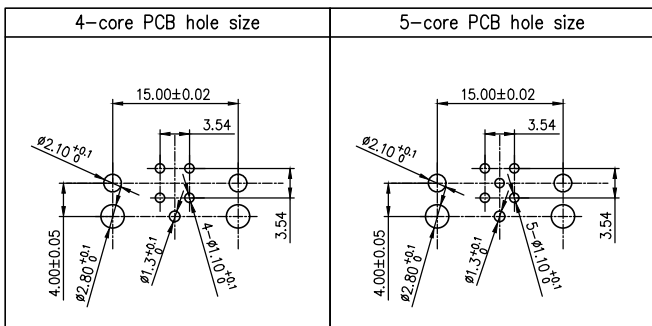


Note:
 1. Waterproof Rate: IP68
 2. This product must meet IEC61076-2-101
 3. This product must meet 2011/65/EU ROHS compliance.
 4. Not note tolerances: ±0.20



Recommended Panel Cut-Out



Ordering Information

FM12S T08 03 - X XX S 1 XX D 00
 1 2 3 4 5 6 7 8 9

- | | | | |
|---|---|------------------------------------|---|
| 1 Category
FM12S-M12 Socket | 2 Mounting thread
T08-Front mounting M12X1.0 | 3 Distinction num.
03 | 4 Coded
A-A CODED
B-B CODED
D-D CODED |
| 5 Circuits
04-4Circuits
05-5Circuits
08-8Circuits
12-12Circuits | 6 Contact
S-Socket | 7 Contact plating
1-Gold plated | 8 Contact plating thickness
01-0.025µm
03-0.075µm |
| | | | 9 Wiring type
D-Through Hole |

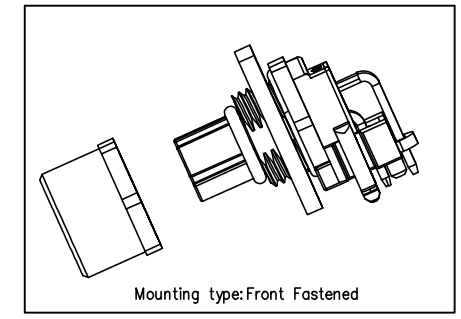
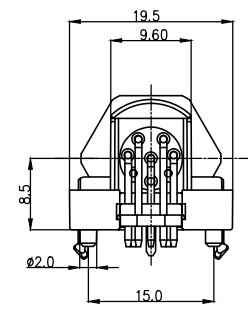
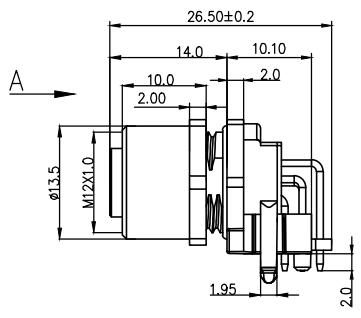
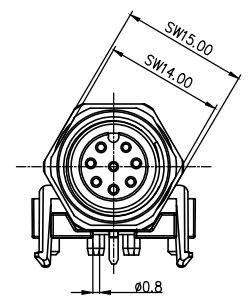
Circuits	Rated voltage	Rated impulse voltage	Rated current	Contact resistance	Insulation resistance
4Circuits	250V	2500V	4A	≤5mΩ	≥100MΩ
5Circuits	60V	1500V	4A	≤5mΩ	≥100MΩ

Installation category	PCB
Degree of protection	IP68(in mated condition)
Mechanical operation	> 100 mating cycles
Upper temperature	105°C
Lower temperature	-40°C
Pollution degree	3
Overtoltage categorie	II
Material group	II
Material of contact	CuZn
Contact plating	Au
Material of contact body	PA66
Sealing	EPDM
Material of housing	alloy

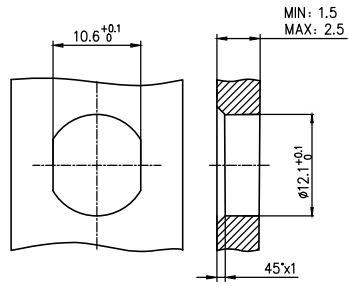
THIRD ANGLE PROJECTION	GENERAL TOLERANCES (UNLESS SPECIFIED)		APPROVE BY LEO	DATE 27/Apr/24	PART NO. FM12ST0803-XXXS1XXD00	ITEM NO. FM12ST0803	 Building Technology Cornerstone
	DESIGN UNITS METRIC	X. ±0.30	X.* ±5°	CHECKED BY GISELLE	DATE 27/Apr/24	TITLE M12 female end elbow socket, shielded, through-hole welding. (4/5/8/12) circuits, M12X1.0, front lock, codes A/B/D, without flat position	
SCALE 1:1	SIZE A4	X.XX ±0.15	X.XX* ±1°	DRAWN BY King	DATE 27/Apr/24	THIS DRAWING CONTAINS INFORMATION THAT IS PROPRIETARY TO TXGA INDUSTRIAL ELECTRONICS(S.Z)CO.,LTD AND SHOULD NOT BE USED WITHOUT WRITTEN PERMISSION	REV 0 SHEET NO. 1/3

1	2	3	4	5	6	7	8			
Coded	8circuits				REV	LOCATIONS	DESCRIPTION	DATE	REVISER	APPD
A-Coded										

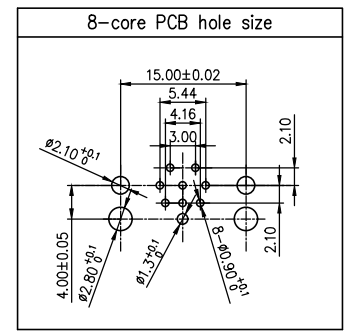
VIEW A



- Note:
1. Waterproof Rate: IP68
 2. This product must meet IEC61076-2-101
 3. This product must meet 2011/65/EU ROHS compliance.
 4. Not note tolerances: ±0.20



Recommended Panel Cut-Out



Installation category	PCB
Degree of protection	IP68(in mated condition)
Mechanical operation	> 100 mating cycles
Upper temperature	105°C
Lower temperature	-40°C
Pollution degree	3
Overtoltage categorie	II
Material group	II
Material of contact	CuZn
Contact plating	Au
Material of contact body	PA66
Sealing	EPDM
Material of housing	alloy

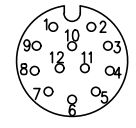
Ordering Information

FM12S T08 03 - X XX S 1 XX D 00
 1 2 3 4 5 6 7 8 9

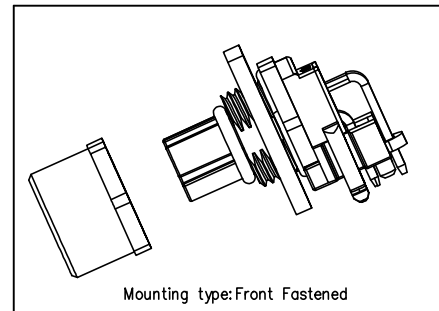
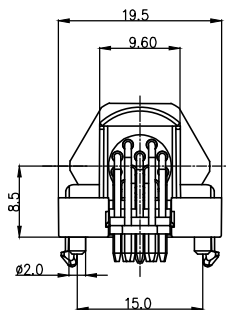
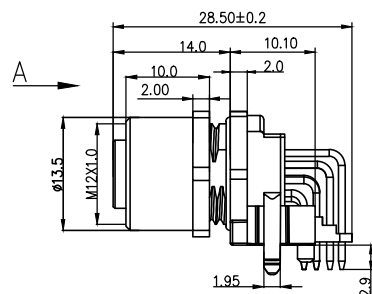
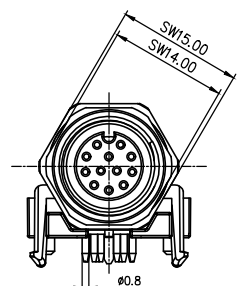
- | | | | |
|---|---|--------------------------------------|---|
| 1 Category
FM12S-M12 Socket | 2 Mounting thread
T08-Front mounting M12X1.0 | 3 Distinction num.
03 | 4 Coded
A-A CODED
B-B CODED
D-D CODED |
| 5 Circuits
04-4Circuits
05-5Circuits
08-8Circuits
12-12Circuits | 6 Contact
S-Socket | 7 Contact plating
1-Gold plated | 8 Contact plating thickness
01-0.025µm
03-0.075µm |
| | | | 9 Wiring type
D-Through Hole |

Circuits	Rated voltage	Rated impulse voltage	Rated current	Contact resistance	Insulation resistance
8Circuits	30V	800V	2A	≤5mΩ	≥100MΩ
 THIRD ANGLE PROJECTION	GENERAL TOLERANCES (UNLESS SPECIFIED)		APPROVE BY LEO	DATE 27/Apr/24	PART NO. FM12ST0803-XXS1XXD00
	X. ±0.30	X.* ±5°	CHECKED BY GISELLE	DATE 27/Apr/24	ITEM NO. FM12ST0803
DESIGN UNITS METRIC	X.X ±0.20	X.X* ±2°	DRAWN BY King	DATE 27/Apr/24	TITLE M12 female end elbow socket, shielded, through-hole welding, (4/5/8/12) circuits, M12X1.0, front lock, codes A/B/D, without flat position
SCALE 1:1	SIZE A4	X.XX ±0.15	X.XX* ±1°		REV 0
		X.XXX ±0.10	X.XXX* ±0.5°		SHEET NO. 2/3
THIS DRAWING CONTAINS INFORMATION THAT IS PROPRIETARY TO TXGA INDUSTRIAL ELECTRONICS(S.Z)CO.,LTD AND SHOULD NOT BE USED WITHOUT WRITTEN PERMISSION					

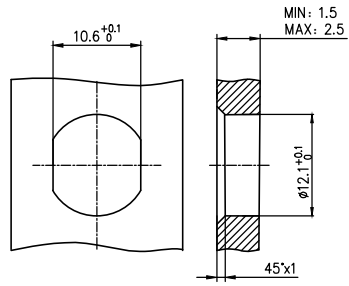


1	2	3	4	5	6	7	8
Coded	12circuits						
A-Coded							
VIEW A							

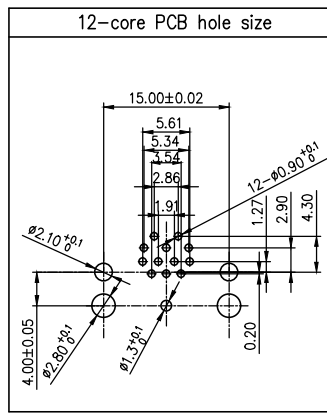
REV	LOCATIONS	DESCRIPTION	DATE	REVISER	APPD



- Note:
1. Waterproof Rate: IP68
 2. This product must meet IEC61076-2-101
 3. This product must meet 2011/65/EU ROHS compliance.
 4. Not note tolerances: ±0.20



Recommended Panel Cut-Out



Installation category	PCB
Degree of protection	IP68(in mated condition)
Mechanical operation	> 100 mating cycles
Upper temperature	105°C
Lower temperature	-40°C
Pollution degree	3
Overvoltage categorie	II
Material group	II
Material of contact	CuZn
Contact plating	Au
Material of contact body	PA66
Sealing	EPDM
Material of housing	alloy

Ordering Information

FM12S T08 03 - X XX S 1 XX D 00

1 2 3 4 5 6 7 8 9

1 Category FM12S-M12 Socket	2 Mounting thread T08-Front mounting M12X1.0	3 Distinction num. 03	4 Coded A-A CODED B-B CODED D-D CODED
5 Circuits 04-4Circuits 05-5Circuits 08-8Circuits 12-12Circuits	6 Contact S-Socket	7 Contact plating 1-Gold plated	8 Contact plating thickness 01-0.025µm 03-0.075µm
			9 Wiring type D-Through Hole

Circuits	Rated voltage	Rated impulse voltage	Rated current	Contact resistance	Insulation resistance
12Circuits	30V	800V	1.5A	≤5mΩ	≥100MΩ
THIRD ANGLE PROJECTION	GENERAL TOLERANCES (UNLESS SPECIFIED)		APPROVE BY	DATE	PART NO.
	X. ±0.30	X.* ±5°	LEO	27/Apr/24	FM12ST0803-XXS1XXD00
DESIGN UNITS METRIC	X.X ±0.20	X.X* ±2°	CHECKED BY	DATE	ITEM NO.
	X.XX ±0.15	X.XX* ±1°	GISELLE	27/Apr/24	FM12ST0803
SCALE 1:1	SIZE A4	X.XXX ±0.10	X.XXX* ±0.5°	DRAWN BY	DATE
				King	27/Apr/24

TITLE: M12 female end elbow socket, shielded, through-hole welding, (4/5/8/12) circuits, M12X1.0, front lock, codes A/B/D, without flat position

REV 0 SHEET NO. 3/3

THIS DRAWING CONTAINS INFORMATION THAT IS PROPRIETARY TO TXGA INDUSTRIAL ELECTRONICS(S.Z)CO.,LTD AND SHOULD NOT BE USED WITHOUT WRITTEN PERMISSION

