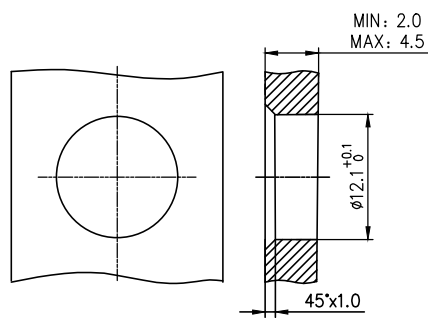
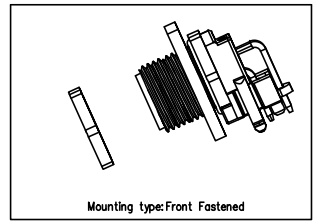
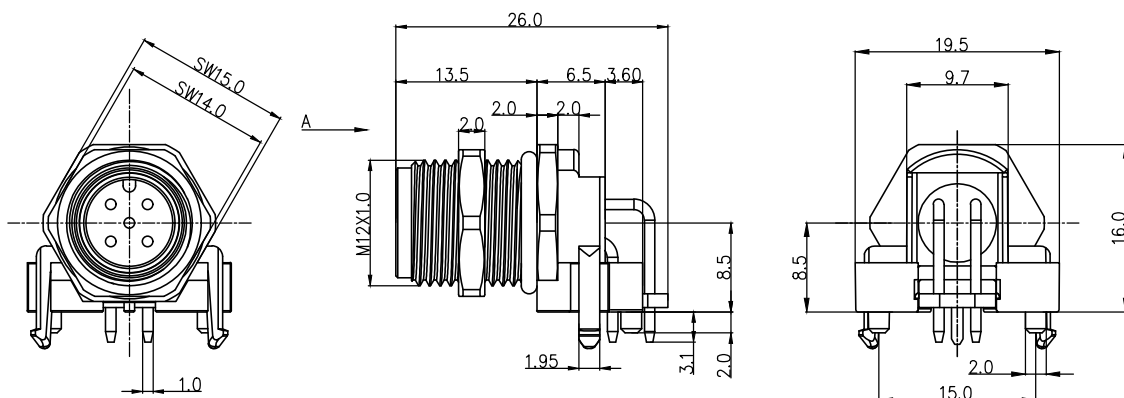
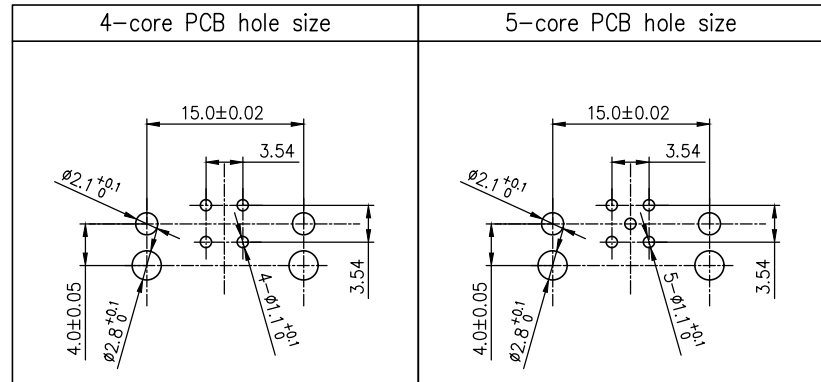


REV	LOCATIONS	DESCRIPTION	DATE	REVISER	APPD
1		Add 4-Circuits/5-Circuits/6-Circuits drawings	17/Apr/25	BAO	LEO



Recommended Panel Cut-Out



- Note:
- Waterproof Rate: IP68
 - This product must meet IEC61076-2-101
 - This product must meet 2011/65/EU ROHS compliance.
 - Not note tolerances: ±0.20

Installation category	PCB
Degree of protection	IP68(in mated condition)
Mechanical operation	> 100 mating cycles
Upper temperature	105°C
Lower temperature	-40°C
Pollution degree	3
Overtoltage categorie	II
Material group	II
Material of contact	CuZn
Contact plating	Au
Material of contact body	PA66
Sealing	EPDM
Material of housing	alloy

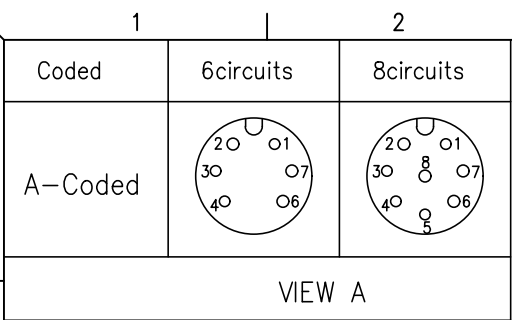
Ordering Information

FM12S T08 16 - X XX P 1 XX D 00
 1 2 3 4 5 6 7 8 9

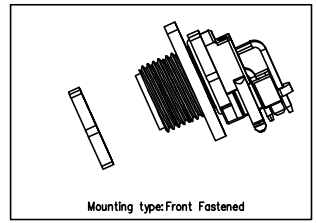
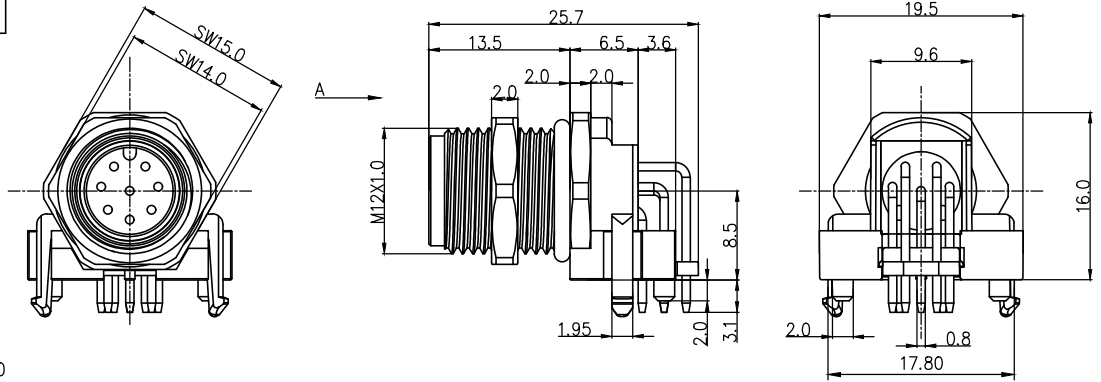
- | | | | |
|--|---|------------------------------------|---|
| 1 Category
FM12S-M12 Socket | 2 Mounting thread
T08-Front mounting M12X1.0 | 3 Distinction num.
16 | 4 Coded
A-A CODED
B-B CODED
D-D CODED |
| 5 Circuits
04-4circuits
05-5circuits
06-6circuits
08-8circuits
12-128circuits | 6 Contact
P-Pin | 7 Contact plating
1-Gold plated | 8 Contact plating thickness
01-0.025μm
03-0.075μm |
| | | | 9 Wiring type
D-Through Hole |

Circuits	Rated voltage	Rated impulse voltage	Rated current	Contact resistance	Insulation resistance
4Circuits	250V	2500V	4A	≤5mΩ	≥100MΩ
5Circuits	60V	1500V	4A	≤5mΩ	≥100MΩ

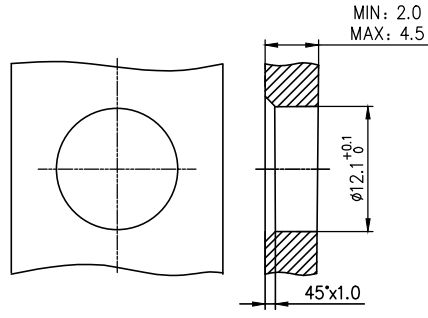
THIRD ANGLE PROJECTION	GENERAL TOLERANCES (UNLESS SPECIFIED)		APPROVE BY LEO	DATE 27/Apr/24	PART NO. FM12ST0816-XXXP1XX00	ITEM NO. FM12ST0816	 Building Technology Cornerstone
	DESIGN UNITS METRIC	X. ±0.30	X.* ±5°	CHECKED BY GISELLE	DATE 27/Apr/24	TITLE M12 male end elbow socket, unshielded, through-hole welding, (4/5/6/8/12) circuits, M12X1.0, front lock, codes A/B/D, without flat position	
SCALE 1:1	SIZE A4	X.XX ±0.15	X.XX' ±1°	DRAWN BY King	DATE 27/Apr/24	THIS DRAWING CONTAINS INFORMATION THAT IS PROPRIETARY TO TXGA INDUSTRIAL ELECTRONICS(S.Z)CO.,LTD AND SHOULD NOT BE USED WITHOUT WRITTEN PERMISSION	REV 1 SHEET NO. 1/3



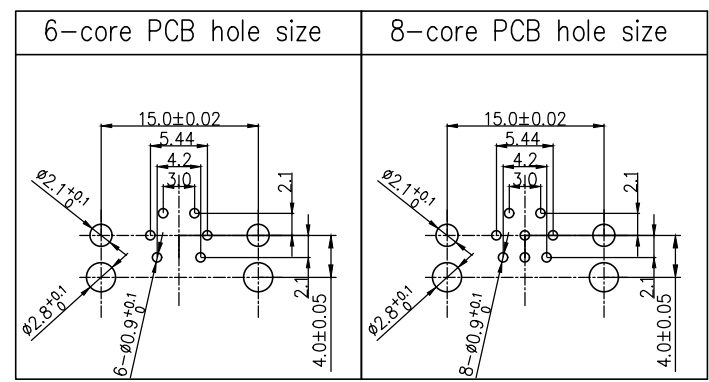
REV	LOCATIONS	DESCRIPTION	DATE	REVISER	APPD
1		Add 4-Circuits/5-Circuits/6-Circuits drawings	17/Apr/25	BAO	LEO



Note:
 1. Waterproof Rate: IP68
 2. This product must meet IEC61076-2-101
 3. This product must meet 2011/65/EU ROHS compliance.
 4. Not note tolerances: ±0.20



Recommended Panel Cut-Out



Installation category	PCB
Degree of protection	IP68(in mated condition)
Mechanical operation	> 100 mating cycles
Upper temperature	105°C
Lower temperature	-40°C
Pollution degree	3
Overtoltage categorie	II
Material group	II
Material of contact	CuZn
Contact plating	Au
Material of contact body	PA66
Sealing	EPDM
Material of housing	alloy

Ordering Information

FM12S T08 16 - X XX P 1 XX D 00
 1 2 3 4 5 6 7 8 9

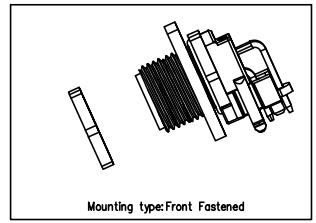
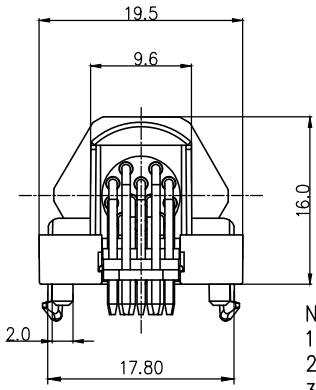
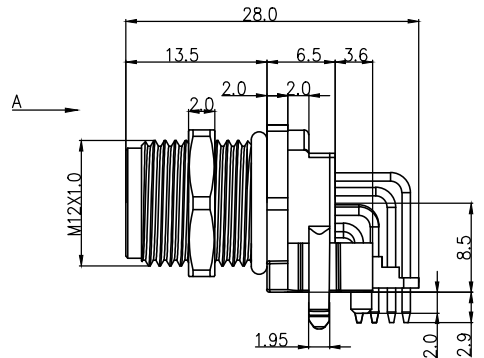
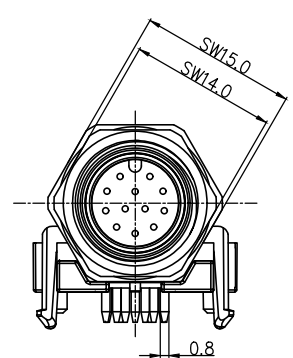
- | | | | |
|---|---|------------------------------------|---|
| 1 Category
FM12S-M12 Socket | 2 Mounting thread
T08-Front mounting M12X1.0 | 3 Distinction num.
16 | 4 Coded
A-A CODED
B-B CODED
D-D CODED |
| 5 Circuits
04-4ircuits
05-5ircuits
06-6ircuits
08-8ircuits
12-128ircuits | 6 Contact
P-Pin | 7 Contact plating
1-Gold plated | 8 Contact plating thickness
01-0.025µm
03-0.075µm |
| | | | 9 Wiring type
D-Through Hole |

Circuits	Rated voltage	Rated impulse voltage	Rated current	Contact resistance	Insulation resistance
6Circuits	30V	800V	2A	≤5mΩ	≥100MΩ
8Circuits	30V	800V	2A	≤5mΩ	≥100MΩ

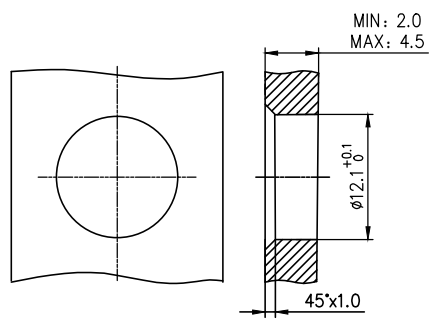
THIRD ANGLE PROJECTION	GENERAL TOLERANCES (UNLESS SPECIFIED)		APPROVE BY LEO	DATE 27/Apr/24	PART NO. FM12ST0816-AXXP1XX00	ITEM NO. FM12ST0816	 Building Technology Cornerstone
	DESIGN UNITS METRIC	X.X ±0.30	X.* ±5°	CHECKED BY GISELLE	DATE 27/Apr/24	TITLE M12 male end elbow socket, unshielded, through-hole welding, (4/5/6/8/12) circuits, M12X1.0, front lock, codes A/B/D, without flat position	
SCALE 1:1	SIZE A4	X.XX ±0.15	X.XX* ±1°	DRAWN BY King	DATE 27/Apr/24	THIS DRAWING CONTAINS INFORMATION THAT IS PROPRIETARY TO TXGA INDUSTRIAL ELECTRONICS(S.Z)CO.,LTD AND SHOULD NOT BE USED WITHOUT WRITTEN PERMISSION	REV 1 SHEET NO. 2/3

1	2	3	4	5	6	7	8
Coded	12circuits						
A-Coded							
VIEW A							

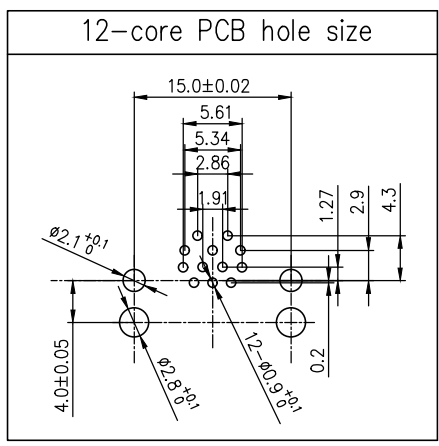
REV	LOCATIONS	DESCRIPTION	DATE	REVISER	APPD
1		Add 4-Circuits/5-Circuits/6-Circuits drawings	17/Apr/25	BAO	LEO



- Note:
1. Waterproof Rate: IP68
 2. This product must meet IEC61076-2-101
 3. This product must meet 2011/65/EU ROHS compliance.
 4. Not note tolerances: ±0.20



Recommended Panel Cut-Out



Installation category	PCB
Degree of protection	IP68(in mated condition)
Mechanical operation	> 100 mating cycles
Upper temperature	105°C
Lower temperature	-40°C
Pollution degree	3
Overtoltage categorie	II
Material group	II
Material of contact	CuZn
Contact plating	Au
Material of contact body	PA66
Sealing	EPDM
Material of housing	alloy

Ordering Information

FM12S T08 16 - X XX P 1 XX D 00
 1 2 3 4 5 6 7 8 9

- | | | | |
|---|---|------------------------------------|---|
| 1 Category
FM12S-M12 Socket | 2 Mounting thread
T08-Front mounting M12X1.0 | 3 Distinction num.
16 | 4 Coded
A-A CODED
B-B CODED
D-D CODED |
| 5 Circuits
04-4ircuits
05-5ircuits
06-6ircuits
08-8ircuits
12-128ircuits | 6 Contact
P-Pin | 7 Contact plating
1-Gold plated | 8 Contact plating thickness
01-0.025µm
03-0.075µm |
| | | | 9 Wiring type
D-Through Hole |

Circuits	Rated voltage	Rated impulse voltage	Rated current	Contact resistance	Insulation resistance
12Circuits	30V	800V	1.5A	≤5mΩ	≥100MΩ

THIRD ANGLE PROJECTION	GENERAL TOLERANCES (UNLESS SPECIFIED)		APPROVE BY LEO	DATE 27/Apr/24	PART NO. FM12ST0816-AXXP1XX00	ITEM NO. FM12ST0816	
	DESIGN UNITS METRIC	X. ±0.30	X.* ±5°	CHECKED BY GISELLE	DATE 27/Apr/24	TITLE M12 male end elbow socket, unshielded, through-hole welding, (4/5/6/8/12) circuits, M12X1.0, front lock, codes A/B/D, without flat position	
SCALE 1:1	SIZE A4	X.XX ±0.15	X.XX' ±1°	DRAWN BY King	DATE 27/Apr/24	THIS DRAWING CONTAINS INFORMATION THAT IS PROPRIETARY TO TXGA INDUSTRIAL ELECTRONICS(S.Z)CO.,LTD AND SHOULD NOT BE USED WITHOUT WRITTEN PERMISSION	REV 1 SHEET NO. 3/3