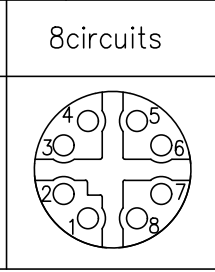


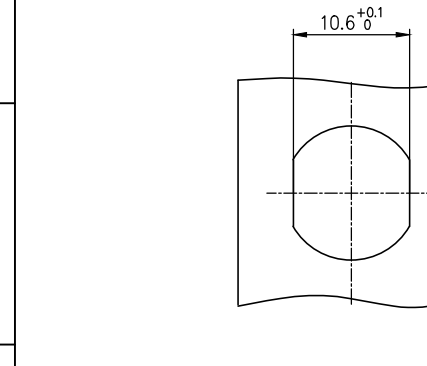
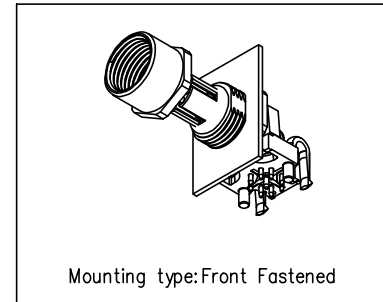
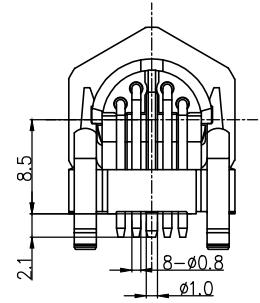
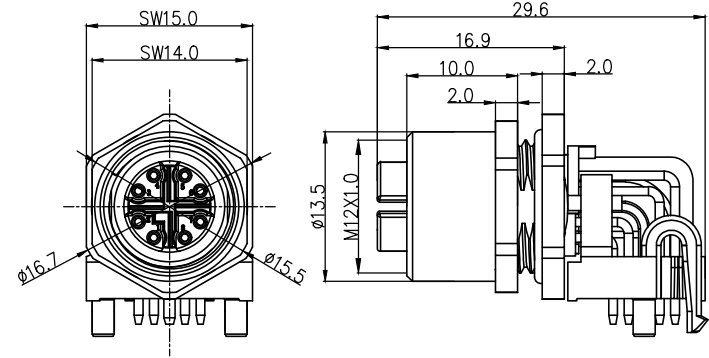
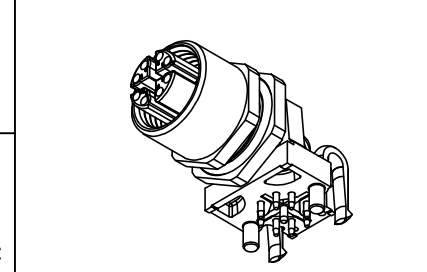
1 2 3 4 5

6 7 8

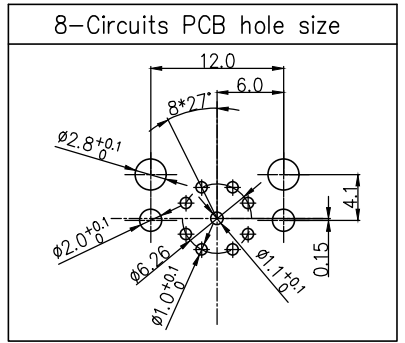
Coded
X-Coded



VIEW A



Recommended Panel Cut-Out



- Note:
1. Waterproof Rate: IP67
 2. This product must meet: IEC 61076-2-109
 3. This product must meet 2011/65/EU ROHS compliance.
 4. Not note tolerances: ±0.20

Installation category	PCB
Degree of protection	IP67(in mated condition)
Mechanical operation	> 100 mating cycles
Upper temperature	105°C
Lower temperature	-40°C
Pollution degree	3
Overtoltage categorie	II
Material group	II
Material of contact	CuZn
Contact plating	Au
Material of contact body	PA66
Sealing	EPDM
Material of housing	alloy

Ordering Information

FM12S T08 40 - X 08 S 1 XX D 00
 1 2 3 4 5 6 7 8 9

1 Category FM12S-M12 Socket
 2 Mounting thread T08-Front mounting M12X1.0
 3 Distinction num. 40
 4 Coded X-X CODED

5 Circuits 08-8Circuits
 6 Contact S-Socket
 7 Contact plating 1-Gold plated
 8 Contact plating thickness 01-0.025µm 03-0.075µm
 9 Wiring type D-Through Hole

Circuits	Rated voltage	Rated impulse voltage	Rated current	Contact resistance	Insulation resistance	Signal type classification
8Circuits	50V(AC)/60V(DC)	800V	0.5A	≤5mΩ	≥100MΩ	CAT6 _A

 THIRD ANGLE PROJECTION DESIGN UNITS METRIC SCALE 1:1 SIZE A4	GENERAL TOLERANCES (UNLESS SPECIFIED)		APPROVE BY LEO	DATE 27/Apr/24	PART NO. FM12ST0840-X08S1XXD00	ITEM NO. FM12ST0840
	X. ±0.30	X.* ±5°	CHECKED BY GISELLE	DATE 27/Apr/24	TITLE M12 female end elbow socket, shielded, through-hole welding, 8 circuits, M12X1.0, front lock, codes X, double flat position	
	X.X ±0.20	X.X* ±2°	DRAWN BY King	DATE 27/Apr/24	REV 0 SHEET NO. 1/1	
	X.XX ±0.15	X.XX* ±1°	THIS DRAWING CONTAINS INFORMATION THAT IS PROPRIETARY TO TXGA INDUSTRIAL ELECTRONICS(S.Z)CO.,LTD AND SHOULD NOT BE USED WITHOUT WRITTEN PERMISSION			
X.XXX ±0.10	X.XXX* ±0.5°					



Building Technology Cornerstone

1 2 3 4 5 6 7 8