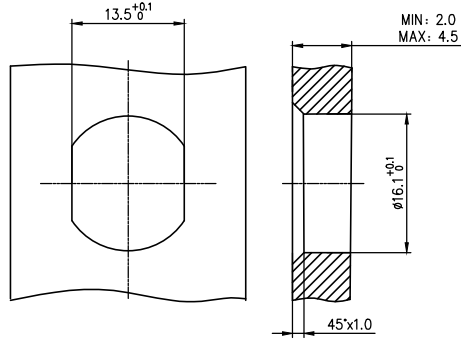


Note:  
 1. Waterproof Rate: IP68  
 2. This product must meet IEC61076-2-101  
 3. This product must meet 2011/65/EU ROHS compliance.  
 4. Not note tolerances: ±0.20



2-Circuits PCB hole size	3-Circuits PCB hole size	4-Circuits PCB hole size	5-Circuits PCB hole size

Installation category	PCB
Degree of protection	IP68(in mated condition)
Mechanical operation	> 100 mating cycles
Upper temperature	105°C
Lower temperature	-40°C
Pollution degree	3
Overtoltage categorie	II
Material group	II
Material of contact	CuZn
Contact plating	Au
Material of contact body	PA66
Sealing	EPDM
Material of housing	alloy

Recommended Panel Cut-Out

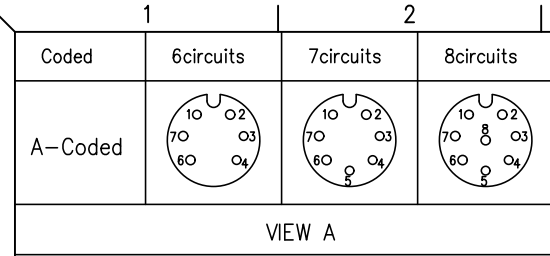
Ordering Information

FM12S T11 02 - X XX S 1 XX D 00  
 1 2 3 4 5 6 7 8 9

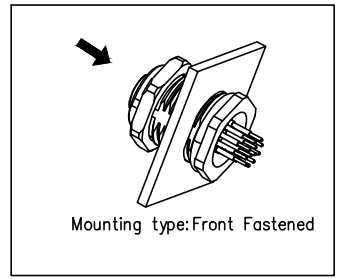
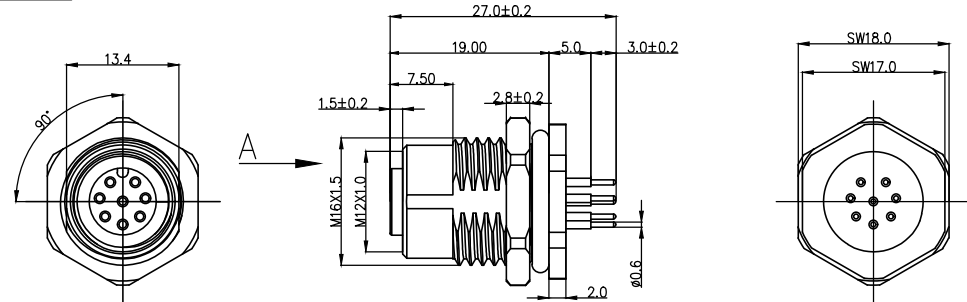
- |  |   |                                      |   |
|--|---|--------------------------------------|---|
| 1   Category<br>FM12S-M12 Socket                                     | 2   Mounting thread<br>T11-Front mounting M16X1.5 | 3   Distinction num.<br>02           | 4   Coded<br>A-A CODED<br>B-B CODED<br>D-D CODED          |
| 5   Circuits<br>02-2Circuits<br>03-3Circuits<br>...<br>17-17Circuits | 6   Contact<br>S-Socket                           | 7   Contact plating<br>1-Gold plated | 8   Contact plating thickness<br>01-0.025µm<br>03-0.075µm |
|  |   |                                      | 9   Wiring type<br>D-Through Hole                         |

Circuits	Rated Voltage	Rated impulse Voltage	Rated Current	Contact resistance	Insulation resistance
2Circuits	250V	2500V	4A	≤5mΩ	≥100MΩ
3Circuits	250V	2500V	4A	≤5mΩ	≥100MΩ
4Circuits	250V	2500V	4A	≤5mΩ	≥100MΩ
5Circuits	60V	1500V	4A	≤5mΩ	≥100MΩ

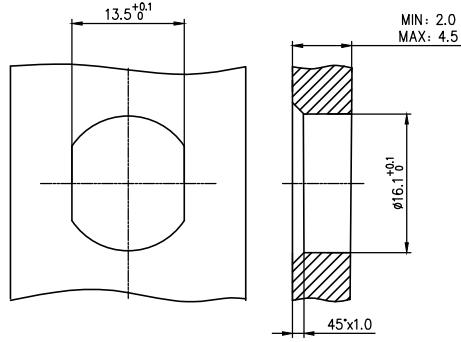
THIRD ANGLE PROJECTION	GENERAL TOLERANCES (UNLESS SPECIFIED)		APPROVE BY LEO	DATE 27/Jun/25	PART NO. FM12ST1102-XXS1XXD00	ITEM NO. FM12ST1102	 Building Technology Cornerstone
	DESIGN UNITS METRIC	X. ±0.30	X.* ±5°	CHECKED BY GISELLE	DATE 27/Jun/25	TITLE M12 female socket, unshielded, 2~17 circuits, M16X1.5, front lock, codes A/B/D	
SCALE 1:1	SIZE A4	X.XX ±0.15	X.XX* ±1°	DRAWN BY King	DATE 27/Jun/25	THIS DRAWING CONTAINS INFORMATION THAT IS PROPRIETARY TO TXGA INDUSTRIAL ELECTRONICS(S.Z)CO.,LTD AND SHOULD NOT BE USED WITHOUT WRITTEN PERMISSION	



REV	LOCATIONS	DESCRIPTION	DATE	REVISER	APPD



Note:  
 1. Waterproof Rate: IP68  
 2. This product must meet IEC61076-2-101  
 3. This product must meet 2011/65/EU ROHS compliance.  
 4. Not note tolerances: ±0.20



6-Circuits PCB hole size	7-Circuits PCB hole size	8-Circuits PCB hole size

Recommended Panel Cut-Out

Installation category	PCB
Degree of protection	IP68(in mated condition)
Mechanical operation	> 100 mating cycles
Upper temperature	105°C
Lower temperature	-40°C
Pollution degree	3
Overtoltage categorie	II
Material group	II
Material of contact	CuZn
Contact plating	Au
Material of contact body	PA66
Sealing	EPDM
Material of housing	alloy

Ordering Information

FM12S T11 02 - X XX S 1 XX D 00  
 1 2 3 4 5 6 7 8 9

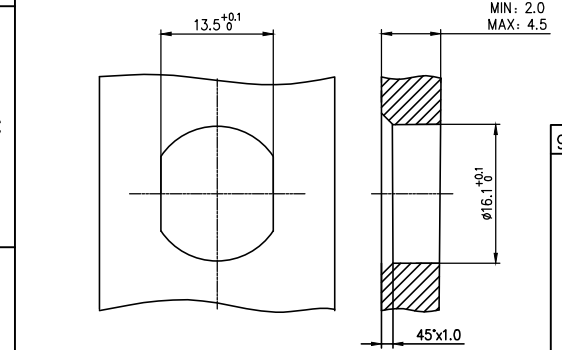
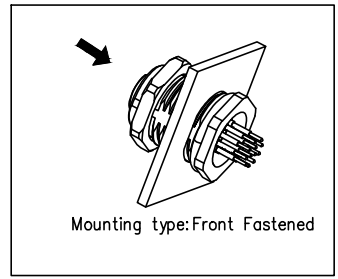
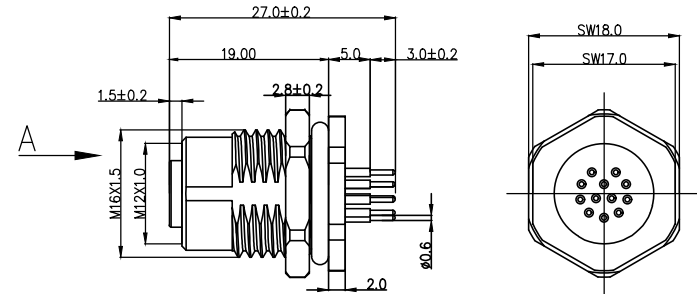
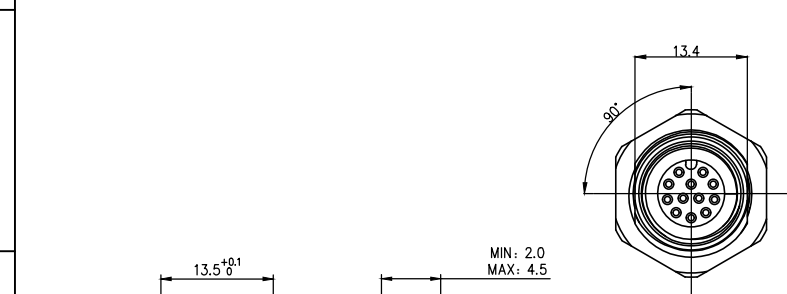
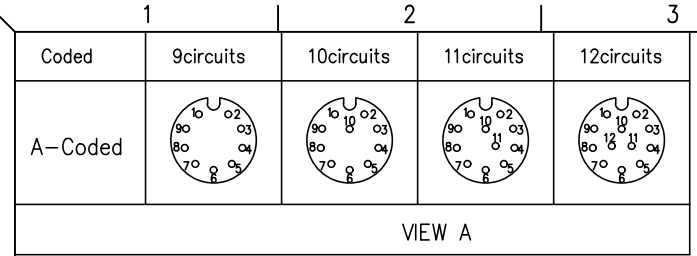
- |  |   |                                    |   |
|--|---|------------------------------------|---|
| 1 Category<br>FM12S-M12 Socket                                     | 2 Mounting thread<br>T11-Front mounting M16X1.5 | 3 Distinction num.<br>02           | 4 Coded<br>A-A CODED<br>B-B CODED<br>D-D CODED          |
| 5 Circuits<br>02-2Circuits<br>03-3Circuits<br>...<br>17-17Circuits | 6 Contact<br>S-Socket                           | 7 Contact plating<br>1-Gold plated | 8 Contact plating thickness<br>01-0.025µm<br>03-0.075µm |
|  |   |                                    | 9 Wiring type<br>D-Through Hole                         |

Circuits	Rated Voltage	Rated impulse Voltage	Rated Current	Contact resistance	Insulation resistance
6Circuits	30V	800V	2A	≤5mΩ	≥100MΩ
7Circuits	30V	800V	2A	≤5mΩ	≥100MΩ
8Circuits	30V	800V	2A	≤5mΩ	≥100MΩ

THIRD ANGLE PROJECTION	GENERAL TOLERANCES (UNLESS SPECIFIED)		APPROVE BY	DATE	PART NO.	ITEM NO.	
	X. ±0.30	X.* ±5°	LEO	27/Jun/25	FM12ST1102-XXS1XXD00	FM12ST1102	
DESIGN UNITS METRIC	X.X ±0.20	X.X* ±2°	CHECKED BY	DATE	TITLE		
	X.XX ±0.15	X.XX* ±1°	GISELLE	27/Jun/25	M12 female socket, unshielded, 2~17 circuits, M16X1.5, front lock, codes A/B/D		
SCALE 1:1	SIZE A4	X.XXX ±0.10	X.XXX* ±0.5°	DRAWN BY King	DATE 27/Jun/25	THIS DRAWING CONTAINS INFORMATION THAT IS PROPRIETARY TO TXGA INDUSTRIAL ELECTRONICS(S.Z)CO.,LTD AND SHOULD NOT BE USED WITHOUT WRITTEN PERMISSION	

Building Technology Cornerstone

REV 0 SHEET NO. 2/4



9-Circuits PCB hole size	10-Circuits PCB hole size	11-Circuits PCB hole size	12-Circuits PCB hole size

Note:  
 1. Waterproof Rate: IP68  
 2. This product must meet IEC61076-2-101  
 3. This product must meet 2011/65/EU ROHS compliance.  
 4. Not note tolerances: ±0.20

Installation category	PCB
Degree of protection	IP68(in mated condition)
Mechanical operation	> 100 mating cycles
Upper temperature	105°C
Lower temperature	-40°C
Pollution degree	3
Overtoltage categorie	II
Material group	II
Material of contact	CuZn
Contact plating	Au
Material of contact body	PA66
Sealing	EPDM
Material of housing	alloy

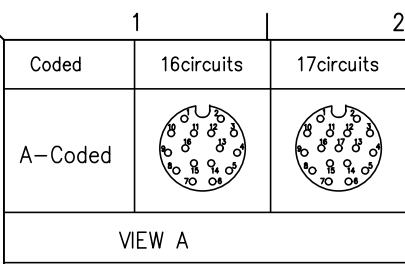
Ordering Information

FM12S T11 02 - X XX S 1 XX D 00  
 1 2 3 4 5 6 7 8 9

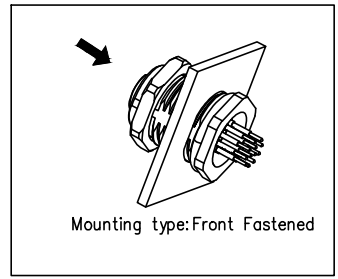
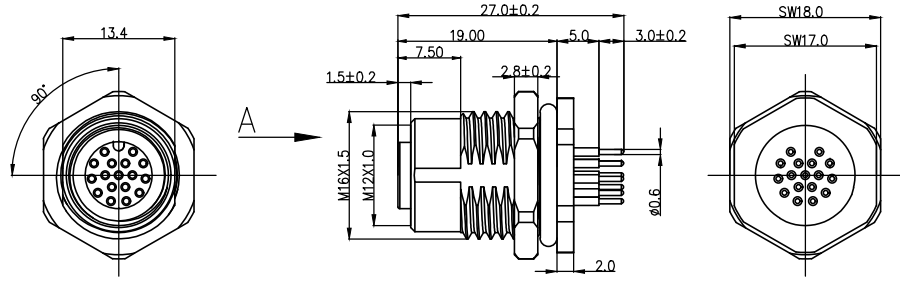
1 Category FM12S-M12 Socket	2 Mounting thread T11-Front mounting M16X1.5	3 Distinction num. 02	4 Coded A-A CODED B-B CODED D-D CODED
5 Circuits 02-2Circuits 03-3Circuits ... 17-17Circuits	6 Contact S-Socket	7 Contact plating 1-Gold plated	8 Contact plating thickness 01-0.025µm 03-0.075µm
			9 Wiring type D-Through Hole

Circuits	Rated Voltage	Rated impulse Voltage	Rated Current	Contact resistance	Insulation resistance
9Circuits	30V	800V	1.5A	≤5mΩ	≥100MΩ
10Circuits	30V	800V	1.5A	≤5mΩ	≥100MΩ
11Circuits	30V	800V	1.5A	≤5mΩ	≥100MΩ
12Circuits	30V	800V	1.5A	≤5mΩ	≥100MΩ

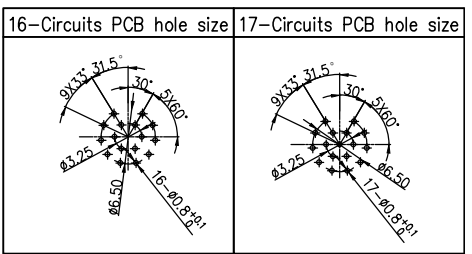
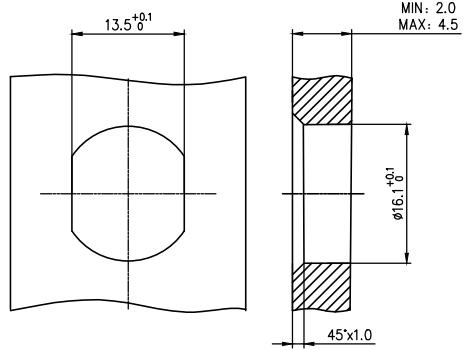
THIRD ANGLE PROJECTION	GENERAL TOLERANCES (UNLESS SPECIFIED)		APPROVE BY LEO	DATE 27/Jun/25	PART NO. FM12ST1102-XXS1XXD00	ITEM NO. FM12ST1102	 Building Technology Cornerstone
	DESIGN UNITS METRIC	X. ±0.30	X.* ±5°	CHECKED BY GISELLE	DATE 27/Jun/25	TITLE M12 female socket, unshielded, 2~17 circuits, M16X1.5, front lock, codes A/B/D	
SCALE 1:1	SIZE A4	X.XX ±0.15	X.XX' ±1°	DRAWN BY King	DATE 27/Jun/25	THIS DRAWING CONTAINS INFORMATION THAT IS PROPRIETARY TO TXGA INDUSTRIAL ELECTRONICS(S.Z)CO.,LTD AND SHOULD NOT BE USED WITHOUT WRITTEN PERMISSION	



REV	LOCATIONS	DESCRIPTION	DATE	REVISER	APPD



- Note:
1. Waterproof Rate: IP68
  2. This product must meet IEC61076-2-101
  3. This product must meet 2011/65/EU ROHS compliance.
  4. Not note tolerances: ±0.20



Installation category	PCB
Degree of protection	IP68(in mated condition)
Mechanical operation	> 100 mating cycles
Upper temperature	105°C
Lower temperature	-40°C
Pollution degree	3
Overtoltage categorie	II
Material group	II
Material of contact	CuZn
Contact plating	Au
Material of contact body	PA66
Sealing	EPDM
Material of housing	alloy

### Ordering Information

FM12S T11 02 - X XX S 1 XX D 00  
 1 2 3 4 5 6 7 8 9

- |  |   |                                    |   |
|--|---|------------------------------------|---|
| 1 Category<br>FM12S-M12 Socket                                     | 2 Mounting thread<br>T11-Front mounting M16X1.5 | 3 Distinction num.<br>02           | 4 Coded<br>A-A CODED<br>B-B CODED<br>D-D CODED          |
| 5 Circuits<br>02-2Circuits<br>03-3Circuits<br>...<br>17-17Circuits | 6 Contact<br>S-Socket                           | 7 Contact plating<br>1-Gold plated | 8 Contact plating thickness<br>01-0.025µm<br>03-0.075µm |
|  |   |                                    | 9 Wiring type<br>D-Through Hole                         |

Circuits	Rated Voltage	Rated impulse Voltage	Rated Current	Contact resistance	Insulation resistance
16Circuits	30V	800V	1.5A	≤5mΩ	≥100MΩ
17Circuits	30V	800V	1.5A	≤5mΩ	≥100MΩ

THIRD ANGLE PROJECTION	GENERAL TOLERANCES (UNLESS SPECIFIED)		APPROVE BY LEO	DATE 27/Jun/25	PART NO. FM12ST1102-XXS1XXD00	ITEM NO. FM12ST1102	<b>TXGA</b> Building Technology Cornerstone
	X. ±0.30	X.* ±5°	CHECKED BY GISELLE	DATE 27/Jun/25	TITLE M12 female socket, unshielded, 2~17 circuits, M16X1.5, front lock, codes A/B/D		
DESIGN UNITS METRIC	X.X ±0.20	X.X* ±2°	DRAWN BY King	DATE 27/Jun/25	THIS DRAWING CONTAINS INFORMATION THAT IS PROPRIETARY TO TXGA INDUSTRIAL ELECTRONICS(S.Z)CO.,LTD AND SHOULD NOT BE USED WITHOUT WRITTEN PERMISSION		REV 0 SHEET NO. 4/4