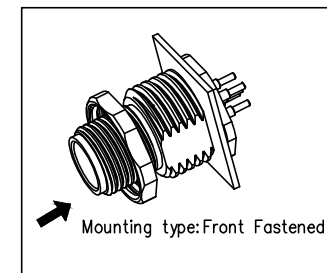
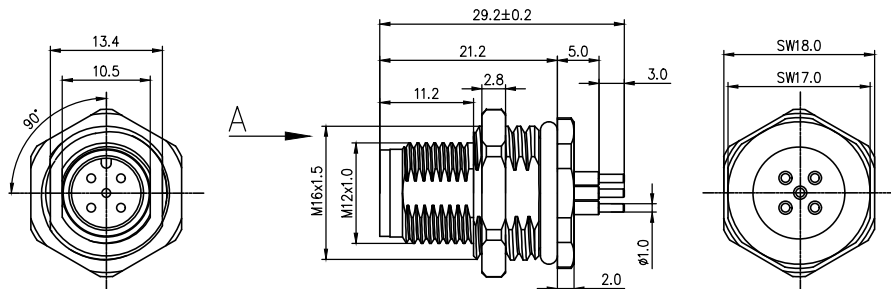
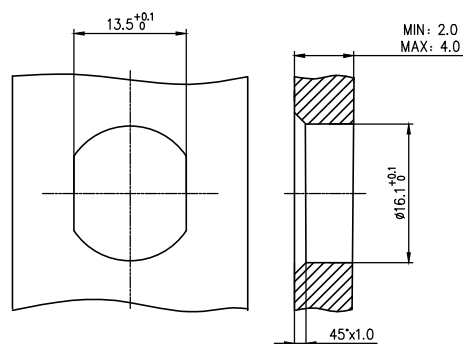


	1	2	3	4	5
	Coded	2circuits	3circuits	4circuits	5circuits
A	A-Coded				
	B-Coded				
B	D-Coded				
	VIEW A				



- Note:
1. Waterproof Rate: IP68
 2. This product must meet IEC61076-2-101
 3. This product must meet 2011/65/EU ROHS compliance.
 4. Not note tolerances: ±0.20



Recommended Panel Cut-Out

2-core PCB hole size	3-core PCB hole size	4-core PCB hole size	5-core PCB hole size

Installation category	PCB
Degree of protection	IP68(in mated condition)
Mechanical operation	> 100 mating cycles
Upper temperature	105°C
Lower temperature	-40°C
Pollution degree	3
Overtoltage categorie	II
Material group	II
Material of contact	CuZn
Contact plating	Au
Material of contact body	PA66
Sealing	EPDM
Material of housing	alloy

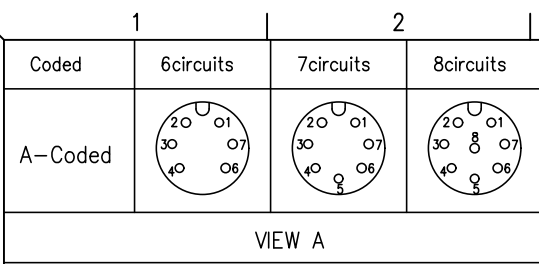
Ordering Information

FM12S T11 06 - X XX P 1 XX D 00
 1 2 3 4 5 6 7 8 9

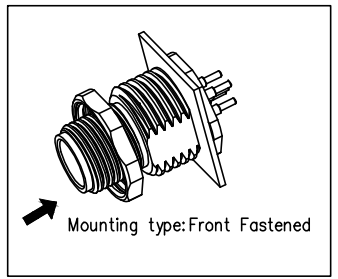
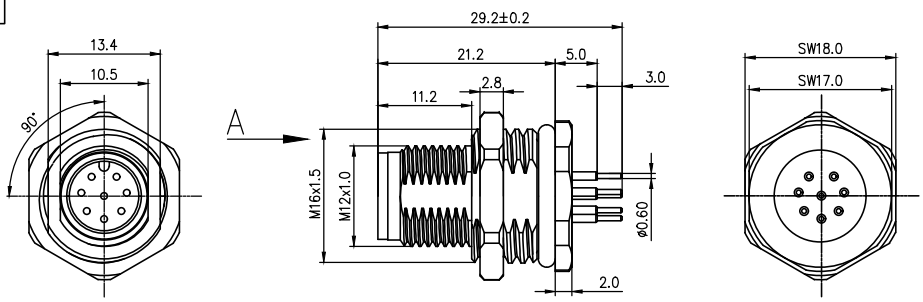
1 Category FM12S-M12 Socket	2 Mounting thread T11-Front mounting M16X1.5	3 Distinction num. 06	4 Coded A-A CODED B-B CODED D-D CODED
5 Circuits 02-2Circuits 03-3Circuits ... 17-17Circuits	6 Contact P-Pin	7 Contact plating 1-Gold plated	8 Contact plating thickness 01-0.025µm 03-0.075µm
			9 Wiring type D-Through Hole

Circuits	Rated voltage	Rated impulse voltage	Rated current	Contact resistance	Insulation resistance
2Circuits	250V	2500V	4A	≤5mΩ	≥100MΩ
3Circuits	250V	2500V	4A	≤5mΩ	≥100MΩ
4Circuits	250V	2500V	4A	≤5mΩ	≥100MΩ
5Circuits	60V	1500V	4A	≤5mΩ	≥100MΩ

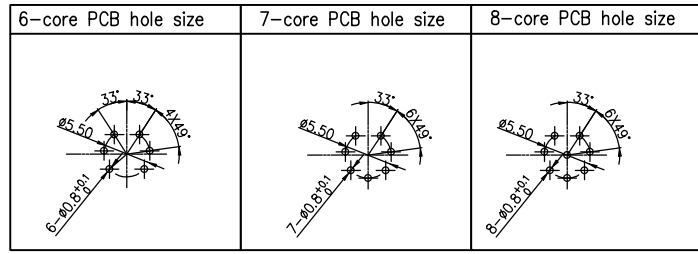
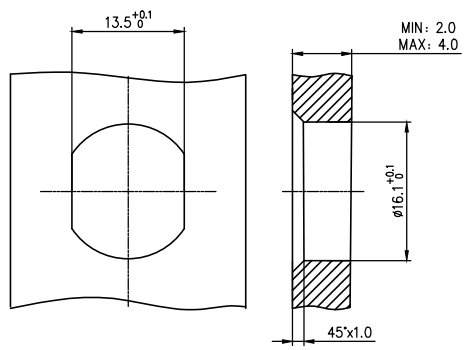
 THIRD ANGLE PROJECTION DESIGN UNITS METRIC SCALE 1:1 SIZE A4	GENERAL TOLERANCES (UNLESS SPECIFIED) X. ±0.30 X.* ±5° X.X ±0.20 X.X* ±2° X.XX ±0.15 X.XX* ±1° X.XXX ±0.10 X.XXX* ±0.5°		APPROVE BY LEO CHECKED BY GISELLE DRAWN BY King	DATE 27/Apr/24 DATE 27/Apr/24 DATE 27/Apr/24	PART NO. FM12ST1106-XXXP1XXD00 ITEM NO. FM12ST1106	 Building Technology Cornerstone REV 0 SHEET NO. 1/4
	THIS DRAWING CONTAINS INFORMATION THAT IS PROPRIETARY TO TXGA INDUSTRIAL ELECTRONICS(S.Z)CO.,LTD AND SHOULD NOT BE USED WITHOUT WRITTEN PERMISSION					



REV	LOCATIONS	DESCRIPTION	DATE	REVISER	APPD



- Note:
1. Waterproof Rate: IP68
 2. This product must meet IEC61076-2-101
 3. This product must meet 2011/65/EU ROHS compliance.
 4. Not note tolerances: ±0.20



Installation category	PCB
Degree of protection	IP68(in mated condition)
Mechanical operation	> 100 mating cycles
Upper temperature	105°C
Lower temperature	-40°C
Pollution degree	3
Overvoltage categorie	II
Material group	II
Material of contact	CuZn
Contact plating	Au
Material of contact body	PA66
Sealing	EPDM
Material of housing	alloy

Recommended Panel Cut-Out

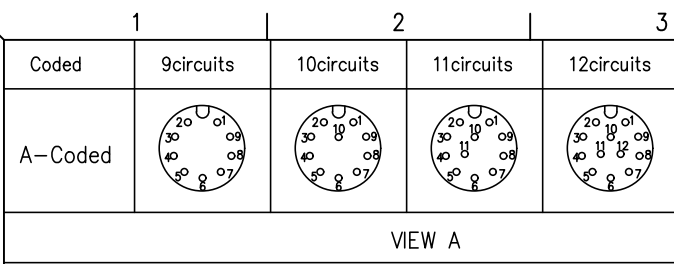
Ordering Information

FM12S T11 06 - X XX P 1 XX D 00
 1 2 3 4 5 6 7 8 9

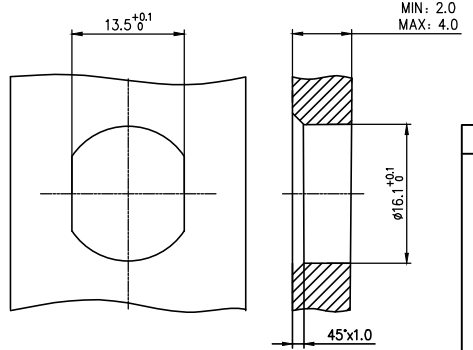
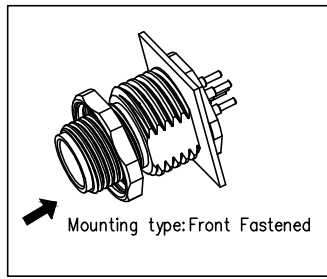
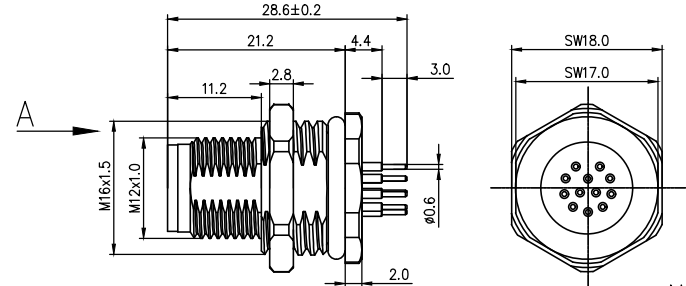
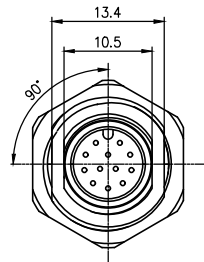
- | | | | |
|--|---|--------------------------------------|---|
| 1 Category
FM12S-M12 Socket | 2 Mounting thread
T11-Front mounting M16X1.5 | 3 Distinction num.
06 | 4 Coded
A-A CODED
B-B CODED
D-D CODED |
| 5 Circuits
02-2Circuits
03-3Circuits
...
17-17Circuits | 6 Contact
P-Pin | 7 Contact plating
1-Gold plated | 8 Contact plating thickness
01-0.025µm
03-0.075µm |
| | | | 9 Wiring type
D-Through Hole |

Circuits	Rated voltage	Rated impulse voltage	Rated current	Contact resistance	Insulation resistance
6Circuits	30V	800V	2A	≤5mΩ	≥100MΩ
7Circuits	30V	800V	2A	≤5mΩ	≥100MΩ
8Circuits	30V	800V	2A	≤5mΩ	≥100MΩ

THIRD ANGLE PROJECTION	GENERAL TOLERANCES (UNLESS SPECIFIED)		APPROVE BY LEO	DATE 27/Apr/24	PART NO. FM12ST1106-XXXP1XXD00	ITEM NO. FM12ST1106	 Building Technology Cornerstone
	DESIGN UNITS METRIC	X. ±0.30	X.* ±5°	CHECKED BY GISELLE	DATE 27/Apr/24	TITLE M12 male socket, unshielded, through-hole welding, 2~17 circuits, M16X1.5, front lock, codes A/B/D, double flat position	
SCALE 1:1	SIZE A4	X.XX ±0.15	X.XX' ±1°	DRAWN BY King	DATE 27/Apr/24	THIS DRAWING CONTAINS INFORMATION THAT IS PROPRIETARY TO TXGA INDUSTRIAL ELECTRONICS(S.Z)CO.,LTD AND SHOULD NOT BE USED WITHOUT WRITTEN PERMISSION	



VIEW A



Recommended Panel Cut-Out

9-core PCB hole size	10-core PCB hole size	11-core PCB hole size	12-core PCB hole size

Note:
 1. Waterproof Rate: IP68
 2. This product must meet IEC61076-2-101
 3. This product must meet 2011/65/EU ROHS compliance.
 4. Not note tolerances: ±0.20

Installation category	PCB
Degree of protection	IP68(in mated condition)
Mechanical operation	> 100 mating cycles
Upper temperature	105°C
Lower temperature	-40°C
Pollution degree	3
Overtoltage categorie	II
Material group	II
Material of contact	CuZn
Contact plating	Au
Material of contact body	PA66
Sealing	EPDM
Material of housing	alloy

Ordering Information

FM12S T11 06 - X XX P 1 XX D 00
 1 2 3 4 5 6 7 8 9

- 1 Category: FM12S-M12 Socket
- 2 Mounting thread: T11-Front mounting M16X1.5
- 3 Distinction num.: 06
- 4 Coded: A-A CODED, B-B CODED, D-D CODED
- 5 Circuits: 02-2Circuits, 03-3Circuits, ... 17-17Circuits
- 6 Contact: P-Pin
- 7 Contact plating: 1-Gold plated
- 8 Contact plating thickness: 01-0.025µm, 03-0.075µm
- 9 Wiring type: D-Through Hole

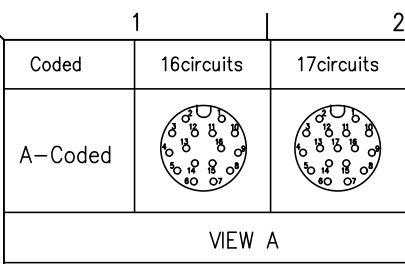
Circuits	Rated voltage	Rated impulse voltage	Rated current	Contact resistance	Insulation resistance
9Circuits	30V	800V	1.5A	≤5mΩ	≥100MΩ
10Circuits	30V	800V	1.5A	≤5mΩ	≥100MΩ
11Circuits	30V	800V	1.5A	≤5mΩ	≥100MΩ
12Circuits	30V	800V	1.5A	≤5mΩ	≥100MΩ

THIRD ANGLE PROJECTION	GENERAL TOLERANCES (UNLESS SPECIFIED)		APPROVE BY	DATE	PART NO.	ITEM NO.
	X. ±0.30	X.* ±5°	LEO	27/Apr/24	FM12ST1106-XXXP1XXD00	FM12ST1106
DESIGN UNITS METRIC	X.X ±0.20	X.X* ±2°	CHECKED BY	DATE	TITLE	
	X.XX ±0.15	X.XX* ±1°	GISELLE	27/Apr/24	M12 male socket, unshielded, through-hole welding, 2~17 circuits, M16X1.5, front lock, codes A/B/D, double flat position	
SCALE 1:1	SIZE A4	X.XXX ±0.10	X.XXX* ±0.5°	DRAWN BY King	DATE 27/Apr/24	THIS DRAWING CONTAINS INFORMATION THAT IS PROPRIETARY TO TXGA INDUSTRIAL ELECTRONICS(S.Z)CO.,LTD AND SHOULD NOT BE USED WITHOUT WRITTEN PERMISSION

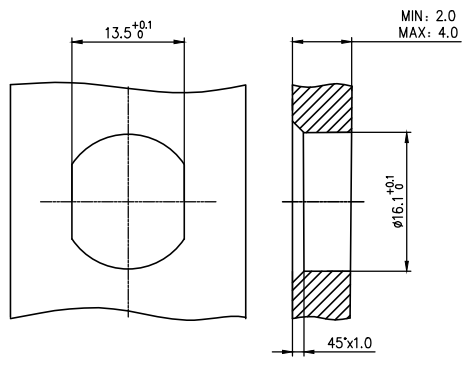
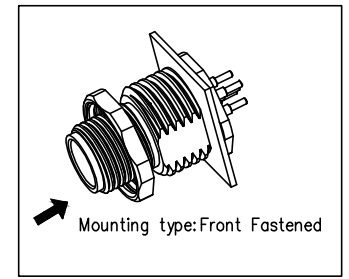
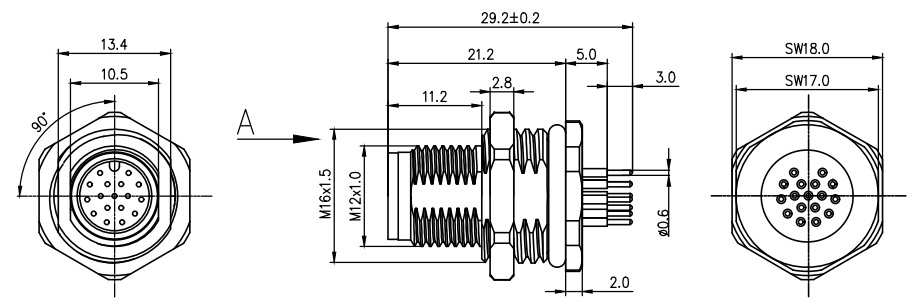


Building Technology Cornerstone

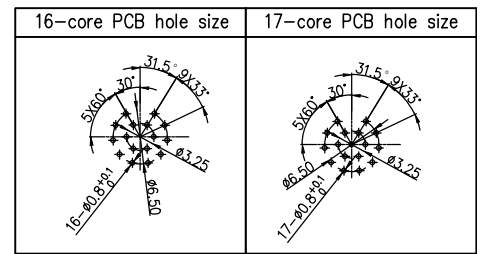
REV 0 SHEET NO. 3/4



REV	LOCATIONS	DESCRIPTION	DATE	REVISER	APPD



Recommended Panel Cut-Out



- Note:
1. Waterproof Rate: IP68
 2. This product must meet IEC61076-2-101
 3. This product must meet 2011/65/EU ROHS compliance.
 4. Not note tolerances: ±0.20

Installation category	PCB
Degree of protection	IP68(in mated condition)
Mechanical operation	> 100 mating cycles
Upper temperature	105°C
Lower temperature	-40°C
Pollution degree	3
Overvoltage categorie	II
Material group	II
Material of contact	CuZn
Contact plating	Au
Material of contact body	PA66
Sealing	EPDM
Material of housing	alloy

Ordering Information

FM12S T11 06 - X XX P 1 XX D 00
 1 2 3 4 5 6 7 8 9

- | | | | |
|--|---|------------------------------------|---|
| 1 Category
FM12S-M12 Socket | 2 Mounting thread
T11-Front mounting M16X1.5 | 3 Distinction num.
06 | 4 Coded
A-A CODED
B-B CODED
D-D CODED |
| 5 Circuits
02-2Circuits
03-3Circuits
...
17-17Circuits | 6 Contact
P-Pin | 7 Contact plating
1-Gold plated | 8 Contact plating thickness
01-0.025µm
03-0.075µm |
| | | | 9 Wiring type
D-Through Hole |

Circuits	Rated voltage	Rated impulse voltage	Rated current	Contact resistance	Insulation resistance
16Circuits	30V	800V	1.5A	≤5mΩ	≥100MΩ
17Circuits	30V	800V	1.5A	≤5mΩ	≥100MΩ

THIRD ANGLE PROJECTION	GENERAL TOLERANCES (UNLESS SPECIFIED)		APPROVE BY LEO	DATE 27/Apr/24	PART NO. FM12ST1106-XXXP1XXD00	ITEM NO. FM12ST1106	 Building Technology Cornerstone
	DESIGN UNITS METRIC	X. ±0.30	X.* ±5°	CHECKED BY GISELLE	DATE 27/Apr/24	TITLE M12 male socket, unshielded, through-hole welding, 2~17 circuits, M16X1.5, front lock, codes A/B/D, double flat position	
SCALE 1:1	SIZE A4	X.XX ±0.15	X.XX' ±1°	DRAWN BY King	DATE 27/Apr/24	THIS DRAWING CONTAINS INFORMATION THAT IS PROPRIETARY TO TXGA INDUSTRIAL ELECTRONICS(S.Z)CO.,LTD AND SHOULD NOT BE USED WITHOUT WRITTEN PERMISSION	