


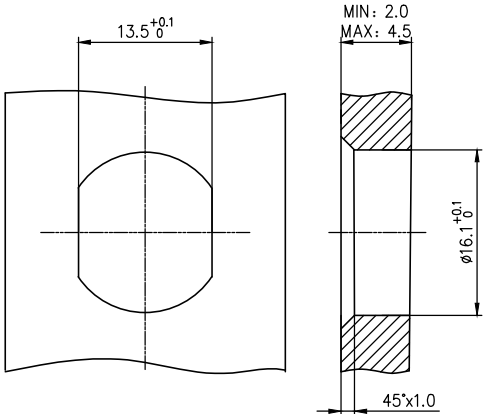
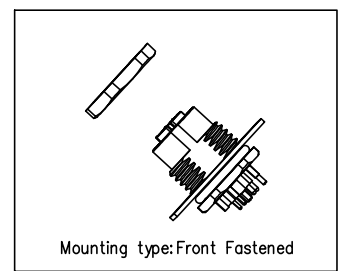
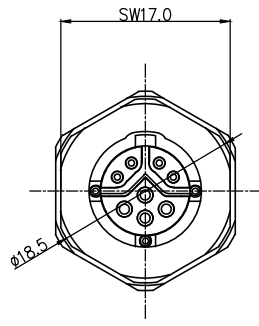
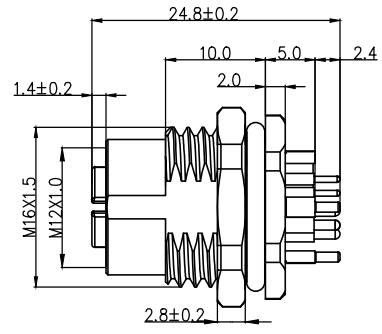
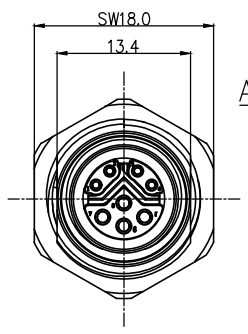
Coded 8circuits

Y-Coded

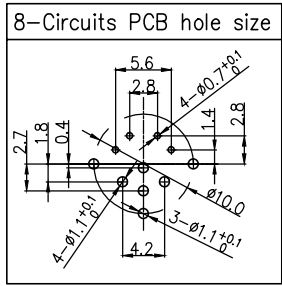


VIEW A

REV	LOCATIONS	DESCRIPTION	DATE	REVISER	APPD



Recommended Panel Cut-Out



- Note:
1. Waterproof Rate: IP67
 2. This product must meet: IEC 61076-2-113
 3. This product must meet 2011/65/EU ROHS compliance.
 4. Not note tolerances: ±0.20



Installation category	PCB
Degree of protection	IP67(in mated condition)
Mechanical operation	> 100 mating cycles
Upper temperature	105°C
Lower temperature	-40°C
Pollution degree	3
Overtoltage categorie	II
Material group	II
Material of contact	CuZn
Contact plating	Au
Material of contact body	PA66
Sealing	EPDM
Material of housing	alloy

Ordering Information

FM12S T11 43 - Y 08 S 1 XX D 00

1 2 3 4 5 6 7 8 9

- | | | | |
|--------------------------------|---|------------------------------------|---|
| 1 Category
FM12S-M12 Socket | 2 Mounting thread
T11-Front mounting M16X1.5 | 3 Distinction num.
43 | 4 Coded
Y-Y CODED |
| 5 Circuits
08-2Circuits | 6 Contact
S-Socket | 7 Contact plating
1-Gold plated | 8 Contact plating thickness
01-0.025µm
03-0.075µm |
| | | | 9 Wiring type
D-Through Hole |

Circuits	Rated Voltage	Rated impulse Voltage	Rated Current	Contact resistance	Insulation resistance	Signal type classification
8Circuits	50V	800V	0.5A/6A	≤5mΩ	≥100MΩ	CAT5e
 THIRD ANGLE PROJECTION	GENERAL TOLERANCES (UNLESS SPECIFIED)		APPROVE BY LEO	DATE 27/Apr/24	PART NO. FM12ST1143-Y08S1XXD00	ITEM NO. FM12ST1143
	X. ±0.30	X.* ±5°	CHECKED BY GISELLE	DATE 27/Apr/24	TITLE M12 female socket, shielded, through-hole welding, 8 circuits, M16X1.5, front lock, Y codes, double flat position	
DESIGN UNITS METRIC	X.X ±0.20	X.X' ±2°	DRAWN BY King	DATE 27/Apr/24	 Building Technology Cornerstone	
SCALE 1:1	SIZE A4	X.XX ±0.15	X.XX' ±1°		THIS DRAWING CONTAINS INFORMATION THAT IS PROPRIETARY TO TXGA INDUSTRIAL ELECTRONICS(S.Z)CO.,LTD AND SHOULD NOT BE USED WITHOUT WRITTEN PERMISSION	
		X.XXX ±0.10	X.XXX' ±0.5°		REV 0	SHEET NO. 1/1