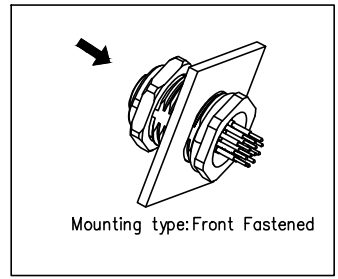
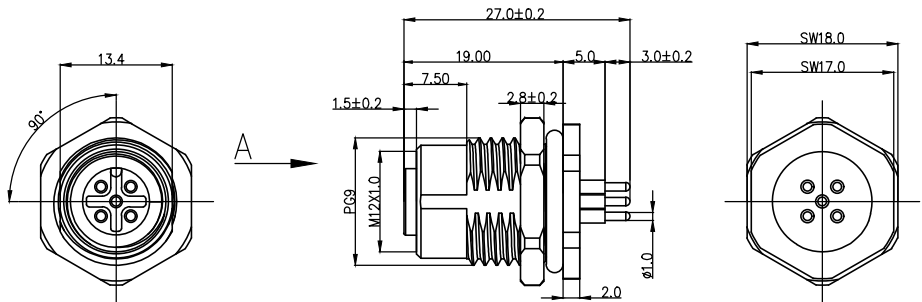
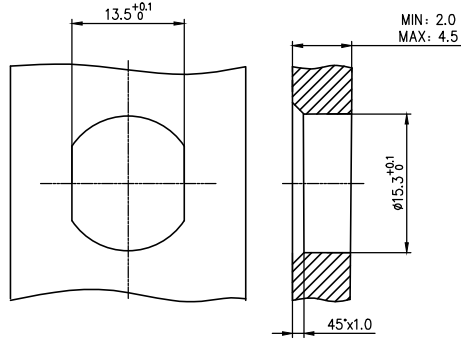


| | | | | | | | | | | | |
|---|---------|-----------|-----------|-----------|-----------|-----|-----------|-------------|------|---------|------|
| | 1 | 2 | 3 | 4 | 5 | 6 | 7 | 8 | | | |
| | Coded | 2circuits | 3circuits | 4circuits | 5circuits | REV | LOCATIONS | DESCRIPTION | DATE | REVISER | APPD |
| A | A-Coded | | | | | | | | | | |
| | B-Coded | | | | | | | | | | |
| B | D-Coded | | | | | | | | | | |



Note:
 1. Waterproof Rate: IP68
 2. This product must meet IEC61076-2-101
 3. This product must meet 2011/65/EU ROHS compliance.
 4. Not note tolerances: ±0.20



| 2-Circuits PCB hole size | 3-Circuits PCB hole size | 4-Circuits PCB hole size | 5-Circuits PCB hole size |
|--------------------------|--------------------------|--------------------------|--------------------------|
| | | | |

| | |
|--------------------------|--------------------------|
| Installation category | PCB |
| Degree of protection | IP68(in mated condition) |
| Mechanical operation | > 100 mating cycles |
| Upper temperature | 105°C |
| Lower temperature | -40°C |
| Pollution degree | 3 |
| Overtoltage categorie | II |
| Material group | II |
| Material of contact | CuZn |
| Contact plating | Au |
| Material of contact body | PA66 |
| Sealing | EPDM |
| Material of housing | alloy |

Recommended Panel Cut-Out

Ordering Information

FM12S T15 02 - X XX S 1 XX D 00
 1 2 3 4 5 6 7 8 9

| | | | |
|--|---|--------------------------------------|---|
| 1 Category FM12S-M12 Socket | 2 Mounting thread T15-Front mounting PG9 | 3 Distinction num. 02 | 4 Coded A-A CODED B-B CODED D-D CODED |
| 5 Circuits 02-2Circuits 03-3Circuits ... 17-17Circuits | 6 Contact S-Socket | 7 Contact plating 1-Gold plated | 8 Contact plating thickness 01-0.025µm 03-0.075µm |
| | | | 9 Wiring type D-Through Hole |

| Circuits | Rated voltage | Rated impulse voltage | Rated current | Contact resistance | Insulation resistance |
|-----------|---------------|-----------------------|---------------|--------------------|-----------------------|
| 2Circuits | 250V | 2500V | 4A | ≤5mΩ | ≥100MΩ |
| 3Circuits | 250V | 2500V | 4A | ≤5mΩ | ≥100MΩ |
| 4Circuits | 250V | 2500V | 4A | ≤5mΩ | ≥100MΩ |
| 5Circuits | 60V | 1500V | 4A | ≤5mΩ | ≥100MΩ |

| | | | | | | |
|--|--|--|--|---|---|-------------------------------------|
| THIRD ANGLE PROJECTION DESIGN UNITS METRIC SCALE 1:1 SIZE A4 | GENERAL TOLERANCES (UNLESS SPECIFIED) X.X ±0.30 X.* ±5° X.X ±0.20 X.X* ±2° X.XX ±0.15 X.XX* ±1° X.XXX ±0.10 X.XXX* ±0.5° | | APPROVE BY LEO CHECKED BY GISELLE DRAWN BY King | DATE 27/Apr/24 DATE 27/Apr/24 DATE 27/Apr/24 | PART NO. FM12ST1502-XXSX1XXD00 ITEM NO. FM12ST1502 | Building Technology Cornerstone |
| | THIS DRAWING CONTAINS INFORMATION THAT IS PROPRIETARY TO TXGA INDUSTRIAL ELECTRONICS(S.Z)CO.,LTD AND SHOULD NOT BE USED WITHOUT WRITTEN PERMISSION | | | REV 0 SHEET NO. 1/4 | | |

