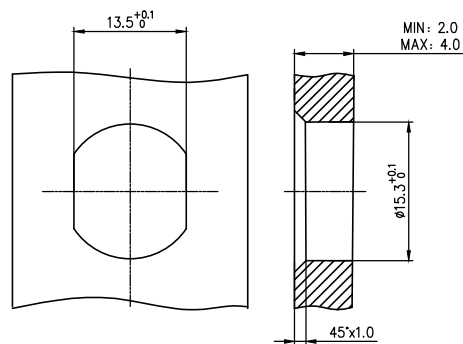


- Note:
1. Waterproof Rate: IP68
  2. This product must meet IEC61076-2-101
  3. This product must meet 2011/65/EU ROHS compliance.
  4. Not note tolerances: ±0.20



Recommended Panel Cut-Out

2-core PCB hole size	3-core PCB hole size	4-core PCB hole size	5-core PCB hole size

Installation category	PCB
Degree of protection	IP68(in mated condition)
Mechanical operation	> 100 mating cycles
Upper temperature	105°C
Lower temperature	-40°C
Pollution degree	3
Overtoltage categorie	II
Material group	II
Material of contact	CuZn
Contact plating	Au
Material of contact body	PA66
Sealing	EPDM
Material of housing	alloy

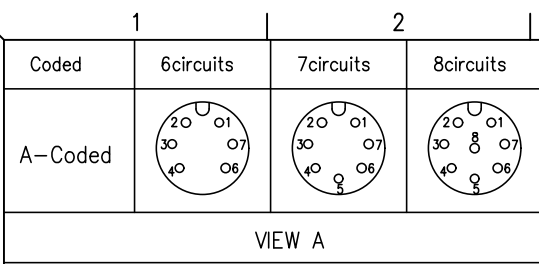
### Ordering Information

FM12S T15 06 - X XX P 1 XX D 00  
 1 2 3 4 5 6 7 8 9

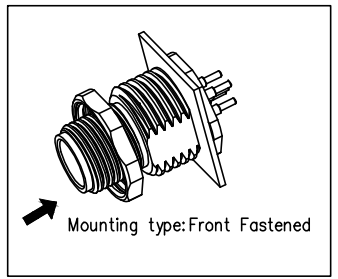
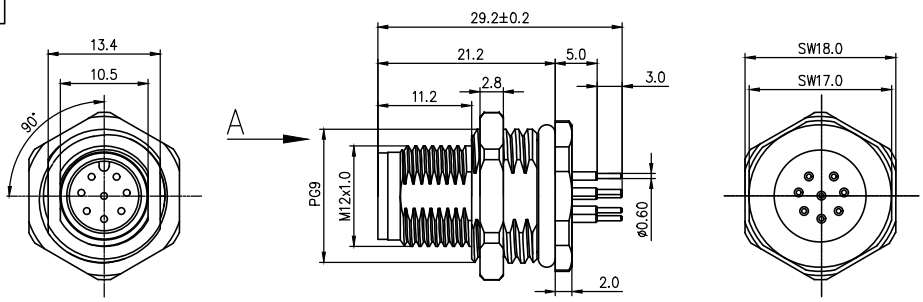
1   Category FM12S-M12 Socket	2   Mounting thread T15-Front mounting PG9	3   Distinction num. 06	4   Coded A-A CODED B-B CODED D-D CODED
5   Circuits 02-2Circuits 03-3Circuits ... 17-17Circuits	6   Contact P-Pin	7   Contact plating 1-Gold plated	8   Contact plating thickness 01-0.025µm 03-0.075µm
			9   Wiring type D-Through Hole

Circuits	Rated voltage	Rated impulse voltage	Rated current	Contact resistance	Insulation resistance
2Circuits	250V	2500V	4A	≤5mΩ	≥100MΩ
3Circuits	250V	2500V	4A	≤5mΩ	≥100MΩ
4Circuits	250V	2500V	4A	≤5mΩ	≥100MΩ
5Circuits	60V	1500V	4A	≤5mΩ	≥100MΩ

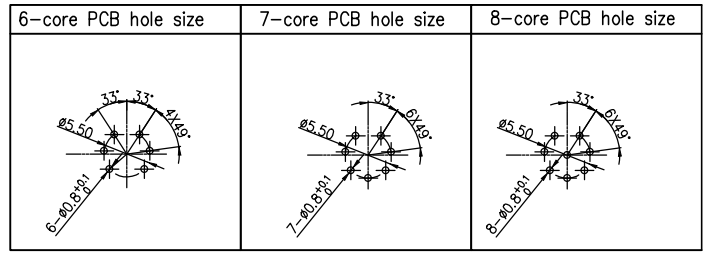
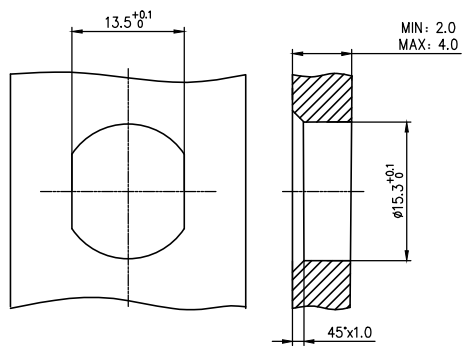
 THIRD ANGLE PROJECTION DESIGN UNITS METRIC SCALE 1:1 SIZE A4	GENERAL TOLERANCES (UNLESS SPECIFIED)		APPROVE BY LEO	DATE 27/Apr/24	PART NO. FM12ST1506-XXXP1XXD00	ITEM NO. FM12ST1506	 Building Technology Cornerstone REV 0 SHEET NO. 1/4
	X. ±0.30	X.* ±5°	CHECKED BY GISELLE	DATE 27/Apr/24	TITLE M12 male socket, unshielded, through-hole welding, 2-17 circuits, PG9, front lock, codes A/B/D, double flat position		
	X.X ±0.20	X.X* ±2°	DRAWN BY King	DATE 27/Apr/24	THIS DRAWING CONTAINS INFORMATION THAT IS PROPRIETARY TO TXGA INDUSTRIAL ELECTRONICS(S.Z)CO.,LTD AND SHOULD NOT BE USED WITHOUT WRITTEN PERMISSION		



REV	LOCATIONS	DESCRIPTION	DATE	REVISER	APPD



- Note:
1. Waterproof Rate: IP68
  2. This product must meet IEC61076-2-101
  3. This product must meet 2011/65/EU ROHS compliance.
  4. Not note tolerances: ±0.20



Recommended Panel Cut-Out

Installation category	PCB
Degree of protection	IP68(in mated condition)
Mechanical operation	> 100 mating cycles
Upper temperature	105°C
Lower temperature	-40°C
Pollution degree	3
Overtoltage categorie	II
Material group	II
Material of contact	CuZn
Contact plating	Au
Material of contact body	PA66
Sealing	EPDM
Material of housing	alloy

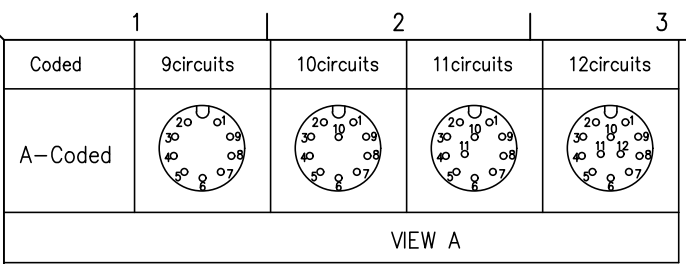
Ordering Information

FM12S T15 06 - X XX P 1 XX D 00  
 1 2 3 4 5 6 7 8 9

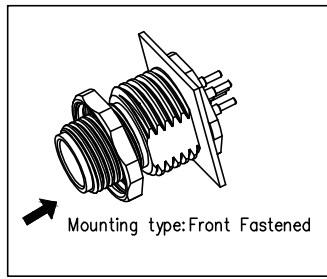
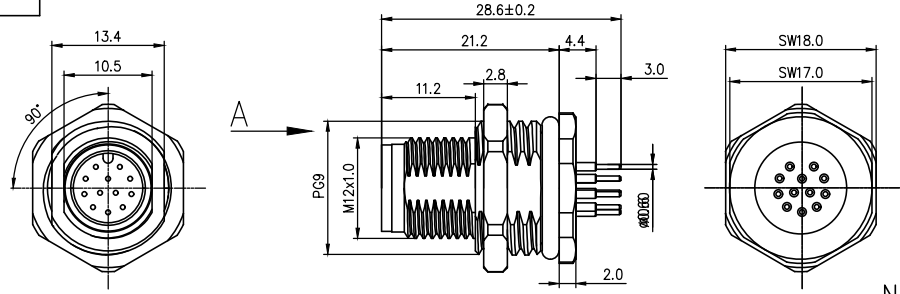
- |                                                                      |                                               |                                      |                                                           |
|----------------------------------------------------------------------|-----------------------------------------------|--------------------------------------|-----------------------------------------------------------|
| 1   Category<br>FM12S-M12 Socket                                     | 2   Mounting thread<br>T15-Front mounting PG9 | 3   Distinction num.<br>06           | 4   Coded<br>A-A CODED<br>B-B CODED<br>D-D CODED          |
| 5   Circuits<br>02-2Circuits<br>03-3Circuits<br>...<br>17-17Circuits | 6   Contact<br>P-Pin                          | 7   Contact plating<br>1-Gold plated | 8   Contact plating thickness<br>01-0.025µm<br>03-0.075µm |
|                                                                      |                                               |                                      | 9   Wiring type<br>D-Through Hole                         |

Circuits	Rated voltage	Rated impulse voltage	Rated current	Contact resistance	Insulation resistance
6Circuits	30V	800V	2A	≤5mΩ	≥100MΩ
7Circuits	30V	800V	2A	≤5mΩ	≥100MΩ
8Circuits	30V	800V	2A	≤5mΩ	≥100MΩ

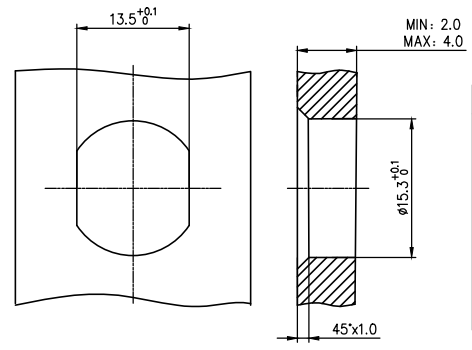
 THIRD ANGLE PROJECTION DESIGN UNITS METRIC SCALE 1:1 SIZE A4	GENERAL TOLERANCES (UNLESS SPECIFIED) X. ±0.30 X.* ±5' X.X ±0.20 X.X* ±2' X.XX ±0.15 X.XX* ±1' X.XXX ±0.10 X.XXX* ±0.5'		APPROVE BY LEO CHECKED BY GISELLE DRAWN BY King	DATE 27/Apr/24 DATE 27/Apr/24 DATE 27/Apr/24	PART NO. FM12ST1506-XXXP1XXD00 ITEM NO. FM12ST1506	 Building Technology Cornerstone REV 0 SHEET NO. 2/4
	TITLE M12 male socket, unshielded, through-hole welding, 2-17 circuits, PG9, front lock, codes A/B/D, double flat position THIS DRAWING CONTAINS INFORMATION THAT IS PROPRIETARY TO TXGA INDUSTRIAL ELECTRONICS(S.Z)CO.,LTD AND SHOULD NOT BE USED WITHOUT WRITTEN PERMISSION					



VIEW A



- Note:
1. Waterproof Rate: IP68
  2. This product must meet IEC61076-2-101
  3. This product must meet 2011/65/EU ROHS compliance.
  4. Not note tolerances: ±0.20



Recommended Panel Cut-Out

9-core PCB hole size	10-core PCB hole size	11-core PCB hole size	12-core PCB hole size

Installation category	PCB
Degree of protection	IP68(in mated condition)
Mechanical operation	> 100 mating cycles
Upper temperature	105°C
Lower temperature	-40°C
Pollution degree	3
Overtoltage categorie	II
Material group	II
Material of contact	CuZn
Contact plating	Au
Material of contact body	PA66
Sealing	EPDM
Material of housing	alloy

Ordering Information

FM12S T15 06 - X XX P 1 XX D 00  
 1 2 3 4 5 6 7 8 9

- |                                  |                                               |                            |                                                  |
|----------------------------------|-----------------------------------------------|----------------------------|--------------------------------------------------|
| 1   Category<br>FM12S-M12 Socket | 2   Mounting thread<br>T15-Front mounting PG9 | 3   Distinction num.<br>06 | 4   Coded<br>A-A CODED<br>B-B CODED<br>D-D CODED |
|----------------------------------|-----------------------------------------------|----------------------------|--------------------------------------------------|

- |                                                                      |                      |                                      |                                                           |                                   |
|----------------------------------------------------------------------|----------------------|--------------------------------------|-----------------------------------------------------------|-----------------------------------|
| 5   Circuits<br>02-2Circuits<br>03-3Circuits<br>...<br>17-17Circuits | 6   Contact<br>P-Pin | 7   Contact plating<br>1-Gold plated | 8   Contact plating thickness<br>01-0.025µm<br>03-0.075µm | 9   Wiring type<br>D-Through Hole |
|----------------------------------------------------------------------|----------------------|--------------------------------------|-----------------------------------------------------------|-----------------------------------|

Circuits	Rated voltage	Rated impulse voltage	Rated current	Contact resistance	Insulation resistance
9Circuits	30V	800V	1.5A	≤5mΩ	≥100MΩ
10Circuits	30V	800V	1.5A	≤5mΩ	≥100MΩ
11Circuits	30V	800V	1.5A	≤5mΩ	≥100MΩ
12Circuits	30V	800V	1.5A	≤5mΩ	≥100MΩ

 THIRD ANGLE PROJECTION	GENERAL TOLERANCES (UNLESS SPECIFIED)		APPROVE BY LEO	DATE 27/Apr/24	PART NO. FM12ST1506-XXXP1XXD00	ITEM NO. FM12ST1506	 Building Technology Cornerstone
	X. ±0.30	X.* ±5°	CHECKED BY GISELLE	DATE 27/Apr/24	TITLE M12 male socket, unshielded, through-hole welding, 2-17 circuits, PG9, front lock, codes A/B/D, double flat position		
DESIGN UNITS METRIC	X.X ±0.20	X.XX* ±2°	DRAWN BY King		DATE 27/Apr/24	REV 0 SHEET NO. 3/4	
SCALE 1:1	SIZE A4	X.XX ±0.15	X.XX* ±1°	THIS DRAWING CONTAINS INFORMATION THAT IS PROPRIETARY TO TXGA INDUSTRIAL ELECTRONICS(S.Z)CO.,LTD AND SHOULD NOT BE USED WITHOUT WRITTEN PERMISSION			
X.XXX ±0.10	X.XXX* ±0.5°						

