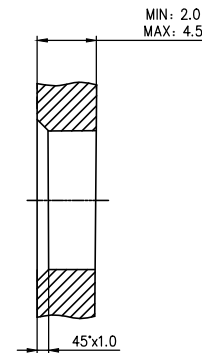
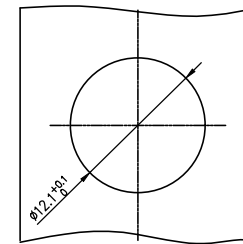
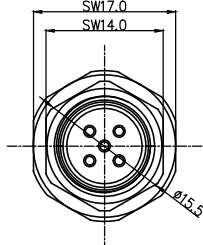
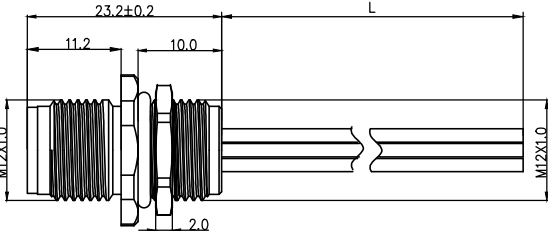
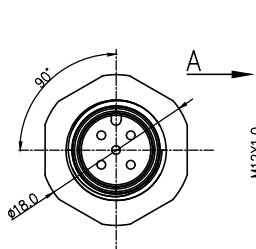


|   |         |           |           |           |           |     |           |             |      |         |      |
|---|---------|-----------|-----------|-----------|-----------|-----|-----------|-------------|------|---------|------|
|   | 1       | 2         | 3         | 4         | 5         | 6   | 7         | 8           |      |         |      |
|   | Coded   | 2circuits | 3circuits | 4circuits | 5circuits | REV | LOCATIONS | DESCRIPTION | DATE | REVISER | APPD |
| A | A-Coded |           |           |           |           |     |           |             |      |         |      |
|   | B-Coded |           |           |           |           |     |           |             |      |         |      |
| B | D-Coded |           |           |           |           |     |           |             |      |         |      |
|   | VIEW A  |           |           |           |           |     |           |             |      |         |      |



Recommended Panel Cut-Out

- Note:
1. Waterproof Rate: IP68
  2. This product must meet IEC61076-2-101
  3. This product must meet 2011/65/EU ROHS compliance.
  4. Not note tolerances: ±0.20
  5. Electronic wire UL 1569 PVC

TABLE 1

|                       |           |             |              |              |     |        |
|-----------------------|-----------|-------------|--------------|--------------|-----|--------|
| L (XXXX)              | 0050      | 0100        | 0150         | 0200         | ... | 0990   |
|                       | 50mm      | 100mm       | 150mm        | 200mm        | ... | 990mm  |
|                       | 1000      | 1500        | 2000         | 3000         | ... | 9999   |
|                       | 1M        | 1.5M        | 2M           | 3M           | ... | 9.999M |
| Dimensions L (mm)     |           |             |              |              |     |        |
| Range(length)         | 50 to 200 | 201 to 500  | 1001 to 5000 | 5000 to 9000 |     |        |
| Tolerance(mm)         | ±10       | ±15         | ±25          | ±30          |     |        |
| PACKING SPECIFICATION |           |             |              |              |     |        |
| Range(length)         | 50 to 200 | 201 to 1000 | 1001 to 5000 |              |     |        |
|                       | 5pcs/Bag  | 2pcs/Bag    | 1pcs/Bag     |              |     |        |

Ordering Information

FM12WR08 14 - X XX P 1 XX XXXX 00  
 1 2 3 4 5 6 7 8 9

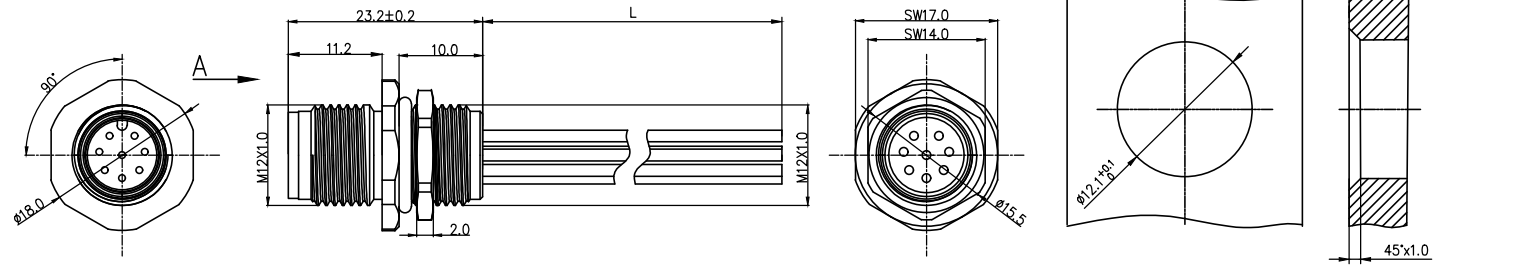
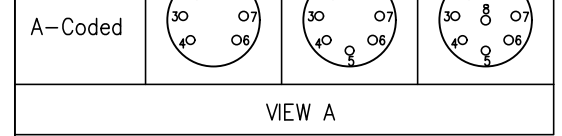
|  |  |                                    |   |
|--|--|------------------------------------|---|
| 1 Category<br>FM12W-M12 Wire                                       | 2 Mounting thread<br>R08-Rear mounting M12X1.0 | 3 Distinction num.<br>14           | 4 Coded<br>A-A CODED<br>B-B CODED<br>D-D CODED          |
| 5 Circuits<br>02-2Circuits<br>03-3Circuits<br>...<br>17-17Circuits | 6 Contact<br>P-Pin                             | 7 Contact plating<br>1-Gold plated | 8 Contact plating thickness<br>01-0.025µm<br>03-0.075µm |
|  |  |                                    | 9 Cable length<br>XXXX-(see table1)                     |

| 2Circuits (A/B/D) | 3Circuits (A/B/D) | 4Circuits (A/B/D)     | 5Circuits (A/B/D) | Installation category | single line              |     |                                 |                             |       |
|-------------------|-------------------|-----------------------|-------------------|-----------------------|--------------------------|-----|---------------------------------|-----------------------------|-------|
|                   |                   |                       |                   | Degree of protection  | IP68(in mated condition) |     |                                 |                             |       |
|                   |                   |                       |                   | Mechanical operation  | > 100 mating cycles      |     |                                 |                             |       |
|                   |                   |                       | 5 Gray            | Upper temperature     | 105°C                    |     |                                 |                             |       |
|                   | 4 Black           | 4 Black               | 4 Black           | Lower temperature     | -40°C                    |     |                                 |                             |       |
| 3 Blue            | 3 Blue            | 3 Blue                | 3 Blue            | Pollution degree      | 3                        |     |                                 |                             |       |
|                   |                   | 2 White               | 2 White           | Overvoltage categorie | II                       |     |                                 |                             |       |
| 1 Brown           | 1 Brown           | 1 Brown               | 1 Brown           | Material group        | II                       |     |                                 |                             |       |
| Circuits          | wire color        | Circuits              | wire color        | Material of contact   | CuZn                     |     |                                 |                             |       |
| Circuits          | Rated voltage     | Rated impulse voltage | Rated current     | Contact resistance    | Insulation resistance    | O.D | Wire size(mm <sup>2</sup> ) AWG | Material of contact plating | Au    |
| 2Circuits         | 250V              | 2500V                 | 4A                | ≤5mΩ                  | ≥100MΩ                   | 1.6 | 0.34mm <sup>2</sup> /22AWG      | Material of contact body    | PA66  |
| 3Circuits         | 250V              | 2500V                 | 4A                | ≤5mΩ                  | ≥100MΩ                   | 1.6 | 0.34mm <sup>2</sup> /22AWG      | Sealing                     | EPDM  |
| 4Circuits         | 250V              | 2500V                 | 4A                | ≤5mΩ                  | ≥100MΩ                   | 1.6 | 0.34mm <sup>2</sup> /22AWG      | Material of housing         | alloy |
| 5Circuits         | 60V               | 1500V                 | 4A                | ≤5mΩ                  | ≥100MΩ                   | 1.6 | 0.34mm <sup>2</sup> /22AWG      |                             |       |

|                        |                                       |             |              |           |   |  |                                     |               |
|------------------------|---------------------------------------|-------------|--------------|-----------|---|--|-------------------------------------|---------------|
| THIRD ANGLE PROJECTION | GENERAL TOLERANCES (UNLESS SPECIFIED) |             | APPROVE BY   | DATE      | PART NO.  | ITEM NO.   | <br>Building Technology Cornerstone |               |
|                        | X. ±0.30                              | X.* ±5°     | LEO          | 27/Apr/24 | FM12WR0814-XXXP1XXXXXX00  | FM12WR0814   |                                     |               |
|                        | X.X ±0.20                             | X.X* ±2°    | CHECKED BY   | DATE      | TITLE   |  |                                     |               |
| DESIGN UNITS METRIC    | X.XX ±0.15                            | X.XX* ±1°   | GISELLE      | 27/Apr/24 | M12 male socket, unshielded, with wire, 2~12 circuits, M12X1.0, rear lock, codes A/B/D, without flat position |  | REV 0                               | SHEET NO. 1/3 |
| SCALE 1:1              | SIZE A4                               | X.XXX ±0.10 | X.XXX* ±0.5° | DRAWN BY  | DATE  | THIS DRAWING CONTAINS INFORMATION THAT IS PROPRIETARY TO TXGA INDUSTRIAL ELECTRONICS(S.Z)CO.,LTD AND SHOULD NOT BE USED WITHOUT WRITTEN PERMISSION |                                     |               |
|                        |                                       |             |              | King      | 27/Apr/24   |  |                                     |               |

|                                      |
|--------------------------------------|
| ELECTRICAL                           |
| 1. Withstanding Voltage: DC 300V     |
| 2. Conduction Impedance: 3Ω (Max)    |
| 3. Insulation Resistance: 10MΩ (Min) |

|       |           |           |           |   |     |           |             |      |         |      |
|-------|-----------|-----------|-----------|---|-----|-----------|-------------|------|---------|------|
| 1     | 2         | 3         | 4         | 5 | 6   | 7         | 8           |      |         |      |
| Coded | 6circuits | 7circuits | 8circuits |   | REV | LOCATIONS | DESCRIPTION | DATE | REVISER | APPD |



- Note:
1. Waterproof Rate: IP68
  2. This product must meet IEC61076-2-101
  3. This product must meet 2011/65/EU ROHS compliance.
  4. Not note tolerances: ±0.20
  5. Electronic wire UL 1569 PVC

Recommended Panel Cut-Out

TABLE 1

|                       |           |             |              |              |     |        |
|-----------------------|-----------|-------------|--------------|--------------|-----|--------|
| L (XXXX)              | 0050      | 0100        | 0150         | 0200         | ... | 0990   |
|                       | 50mm      | 100mm       | 150mm        | 200mm        | ... | 990mm  |
|                       | 1000      | 1500        | 2000         | 3000         | ... | 9999   |
|                       | 1M        | 1.5M        | 2M           | 3M           | ... | 9.999M |
| Dimensions L (mm)     |           |             |              |              |     |        |
| Range(length)         | 50 to 200 | 201 to 500  | 1001 to 5000 | 5000 to 9000 |     |        |
| Tolerance(mm)         | ±10       | ±15         | ±25          | ±30          |     |        |
| PACKING SPECIFICATION |           |             |              |              |     |        |
| Range(length)         | 50 to 200 | 201 to 1000 | 1001 to 5000 |              |     |        |
|                       | 5pcs/Bag  | 2pcs/Bag    | 1pcs/Bag     |              |     |        |

Ordering Information

FM12WR08 14 - X XX P 1 XX XXXX 00  
 1 2 3 4 5 6 7 8 9

|  |  |                                    |   |
|--|--|------------------------------------|---|
| 1 Category<br>FM12W-M12 Wire                                       | 2 Mounting thread<br>R08-Rear mounting M12X1.0 | 3 Distinction num.<br>14           | 4 Coded<br>A-A CODED<br>B-B CODED<br>D-D CODED          |
| 5 Circuits<br>02-2Circuits<br>03-3Circuits<br>...<br>17-17Circuits | 6 Contact<br>P-Pin                             | 7 Contact plating<br>1-Gold plated | 8 Contact plating thickness<br>01-0.025μm<br>03-0.075μm |
|  |  |                                    | 9 Cable length<br>XXXX-(see table1)                     |

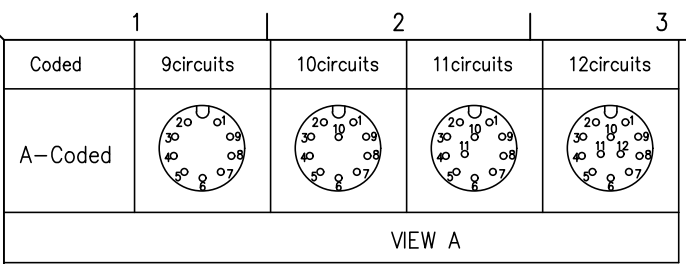
| 6Circuits |            | 7Circuits |            | 8Circuits |            |
|-----------|------------|-----------|------------|-----------|------------|
|           |            |           |            |           |            |
| 7         | Blue       | 7         | Blue       | 7         | Blue       |
| 6         | Pink       | 6         | Pink       | 6         | Pink       |
|           |            | 5         | Gray       | 5         | Gray       |
| 4         | Yellow     | 4         | Yellow     | 4         | Yellow     |
| 3         | Green      | 3         | Green      | 3         | Green      |
| 2         | Brown      | 2         | Brown      | 2         | Brown      |
| 1         | White      | 1         | White      | 1         | White      |
| Circuits  | wire color | Circuits  | wire color | Circuits  | wire color |

|                          |                          |
|--------------------------|--------------------------|
| Installation category    | single line              |
| Degree of protection     | IP68(in mated condition) |
| Mechanical operation     | > 100 mating cycles      |
| Upper temperature        | 105°C                    |
| Lower temperature        | -40°C                    |
| Pollution degree         | 3                        |
| Overvoltage categorie    | II                       |
| Material group           | II                       |
| Material of contact      | CuZn                     |
| Contact plating          | Au                       |
| Material of contact body | PA66                     |
| Sealing                  | EPDM                     |
| Material of housing      | alloy                    |

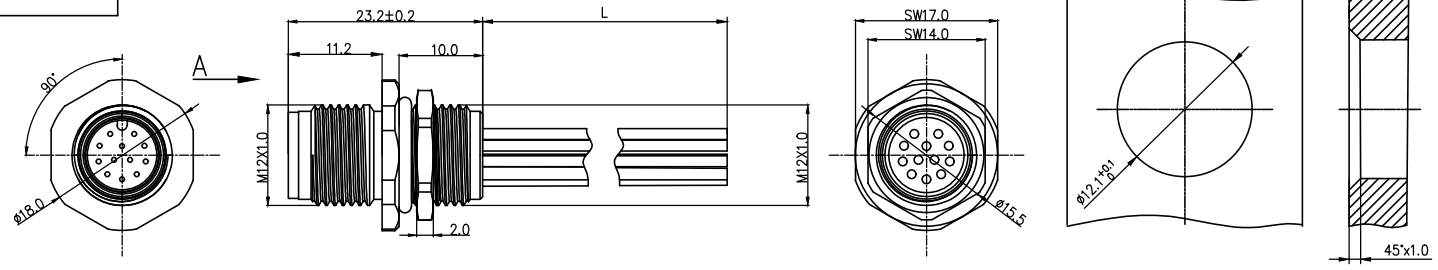
| Circuits  | Rated voltage | Rated impulse voltage | Rated current | Contact resistance | Insulation resistance | O.D | Wire size(mm <sup>2</sup> ) AWG |
|-----------|---------------|-----------------------|---------------|--------------------|-----------------------|-----|---------------------------------|
| 6Circuits | 30V           | 800V                  | 2A            | ≤5mΩ               | ≥100MΩ                | 1.4 | 0.25mm <sup>2</sup> /24AWG      |
| 7Circuits | 30V           | 800V                  | 2A            | ≤5mΩ               | ≥100MΩ                | 1.4 | 0.25mm <sup>2</sup> /24AWG      |
| 8Circuits | 30V           | 800V                  | 2A            | ≤5mΩ               | ≥100MΩ                | 1.4 | 0.25mm <sup>2</sup> /24AWG      |

|                                      |
|--------------------------------------|
| ELECTRICAL                           |
| 1. Withstanding Voltage: DC 300V     |
| 2. Conduction Impedance: 3Ω (Max)    |
| 3. Insulation Resistance: 10MΩ (Min) |

|                        |                                       |            |                       |                   |  |  |                                     |       |               |
|------------------------|---------------------------------------|------------|-----------------------|-------------------|--|--|-------------------------------------|-------|---------------|
| THIRD ANGLE PROJECTION | GENERAL TOLERANCES (UNLESS SPECIFIED) |            | APPROVE BY<br>LEO     | DATE<br>27/Apr/24 | PART NO.<br>FM12WR0814-XXXP1XXXXXX00   | ITEM NO.<br>FM12WR0814   | <br>Building Technology Cornerstone |       |               |
|                        | DESIGN UNITS METRIC                   |            | CHECKED BY<br>GISELLE | DATE<br>27/Apr/24 | TITLE<br>M12 male socket, unshielded, with wire, 2~12 circuits, M12X1.0, rear lock, codes A/B/D, without flat position |  |                                     | REV 0 | SHEET NO. 2/3 |
|                        | SCALE<br>1:1                          | SIZE<br>A4 | DRAWN BY<br>King      |                   | DATE<br>27/Apr/24  | THIS DRAWING CONTAINS INFORMATION THAT IS PROPRIETARY TO TXGA INDUSTRIAL ELECTRONICS(S.Z)CO.,LTD AND SHOULD NOT BE USED WITHOUT WRITTEN PERMISSION |                                     |       |               |



Note:  
 1. Waterproof Rate: IP68  
 2. This product must meet IEC61076-2-101  
 3. This product must meet 2011/65/EU ROHS compliance.  
 4. Not note tolerances: ±0.20  
 5. Electronic wire UL 1569 PVC



Recommended Panel Cut-Out

TABLE 1

| L (XXXX)              | 0050      | 0100        | 0150         | 0200         | ... | 0990   |
|-----------------------|-----------|-------------|--------------|--------------|-----|--------|
|                       | 50mm      | 100mm       | 150mm        | 200mm        | ... | 990mm  |
|                       | 1000      | 1500        | 2000         | 3000         | ... | 9999   |
|                       | 1M        | 1.5M        | 2M           | 3M           | ... | 9.999M |
| Dimensions L (mm)     |           |             |              |              |     |        |
| Range(length)         | 50 to 200 | 201 to 500  | 1001 to 5000 | 5000 to 9000 |     |        |
| Tolerance(mm)         | ±10       | ±15         | ±25          | ±30          |     |        |
| PACKING SPECIFICATION |           |             |              |              |     |        |
| Range(length)         | 50 to 200 | 201 to 1000 | 1001 to 5000 |              |     |        |
|                       | 5pcs/Bag  | 2pcs/Bag    | 1pcs/Bag     |              |     |        |

Ordering Information

FM12W R08 14 - X XX P 1 XX XXXX 00  
 1 2 3 4 5 6 7 8 9

|  |  |                                    |   |
|--|--|------------------------------------|---|
| 1 Category<br>FM12W-M12 Wire                                       | 2 Mounting thread<br>R08-Rear mounting M12X1.0 | 3 Distinction num.<br>14           | 4 Coded<br>A-A CODED<br>B-B CODED<br>D-D CODED          |
| 5 Circuits<br>02-2Circuits<br>03-3Circuits<br>...<br>17-17Circuits | 6 Contact<br>P-Pin                             | 7 Contact plating<br>1-Gold plated | 8 Contact plating thickness<br>01-0.025µm<br>03-0.075µm |
| 9 Cable length<br>XXXX-(see table1)                                |  |                                    |   |

| Circuits   | Rated voltage | Rated impulse voltage | Rated current | Contact resistance | Insulation resistance | OD  | Wire size(mm²) AWG |
|------------|---------------|-----------------------|---------------|--------------------|-----------------------|-----|--------------------|
| 9Circuits  | 30V           | 800V                  | 1.5A          | ≤5mΩ               | ≥100MΩ                | 1.3 | 0.14mm²/26AWG      |
| 10Circuits | 30V           | 800V                  | 1.5A          | ≤5mΩ               | ≥100MΩ                | 1.3 | 0.14mm²/26AWG      |
| 11Circuits | 30V           | 800V                  | 1.5A          | ≤5mΩ               | ≥100MΩ                | 1.3 | 0.14mm²/26AWG      |
| 12Circuits | 30V           | 800V                  | 1.5A          | ≤5mΩ               | ≥100MΩ                | 1.3 | 0.14mm²/26AWG      |

| 9Circuits | 10Circuits | 11Circuits | 12Circuits | Installation category    | single line              |
|-----------|------------|------------|------------|--------------------------|--------------------------|
|           |            |            |            | Degree of protection     | IP68(in mated condition) |
|           |            |            |            | Mechanical operation     | > 100 mating cycles      |
|           |            |            |            | Upper temperature        | 105°C                    |
|           |            |            |            | Lower temperature        | -40°C                    |
|           |            |            |            | Pollution degree         | 3                        |
|           |            |            |            | Overtoltage categorie    | II                       |
|           |            |            |            | Material group           | II                       |
|           |            |            |            | Material of contact      | CuZn                     |
|           |            |            |            | Contact plating          | Au                       |
|           |            |            |            | Material of contact body | PA66                     |
|           |            |            |            | Sealing                  | EPDM                     |
|           |            |            |            | Material of housing      | alloy                    |

|                                      |
|--------------------------------------|
| ELECTRICAL                           |
| 1. Withstanding Voltage: DC 300V     |
| 2. Conduction Impedance: 3Ω (Max)    |
| 3. Insulation Resistance: 10MΩ (Min) |

|  |                                       |          |            |  |                                      |   |                                     |       |
|--|---------------------------------------|----------|------------|--|--------------------------------------|---|-------------------------------------|-------|
| <br>THIRD ANGLE PROJECTION<br>DESIGN UNITS METRIC<br>SCALE 1:1 SIZE A4 | GENERAL TOLERANCES (UNLESS SPECIFIED) |          | APPROVE BY | DATE   | PART NO.<br>FM12WR0814-XXXP1XXXXXX00 | ITEM NO.<br>FM12WR0814  | <br>Building Technology Cornerstone |       |
|  | X. ±0.30                              | X.* ±5°  | LEO        | 27/Apr/24  |                                      |   |                                     |       |
|  | X.X ±0.20                             | X.X* ±2° | CHECKED BY | DATE   | TITLE                                | M12 male socket, unshielded, with wire, 2~12 circuits, M12X1.0, rear lock, codes A/B/D, without flat position |                                     | REV 0 |
| X.XX ±0.15   | X.XX* ±1°                             | DRAWN BY | DATE       | THIS DRAWING CONTAINS INFORMATION THAT IS PROPRIETARY TO TXGA INDUSTRIAL ELECTRONICS(S.Z)CO.,LTD AND SHOULD NOT BE USED WITHOUT WRITTEN PERMISSION |                                      |   |                                     |       |
| X.XXX ±0.10  | X.XXX* ±0.5°                          | King     | 27/Apr/24  |  |                                      |   |                                     |       |