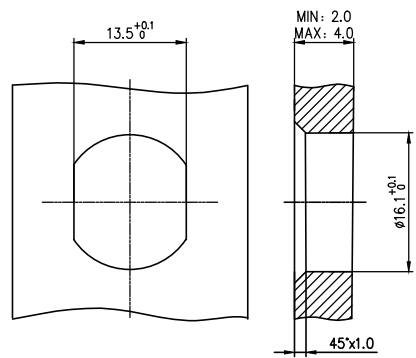
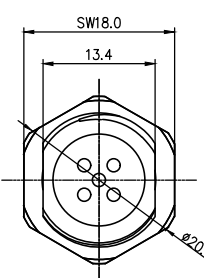
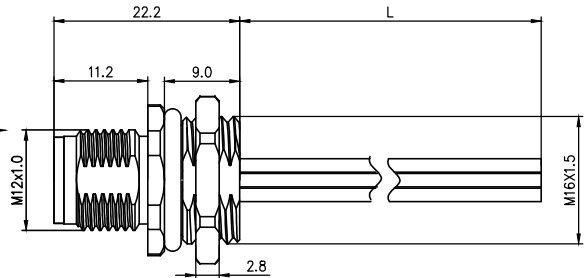
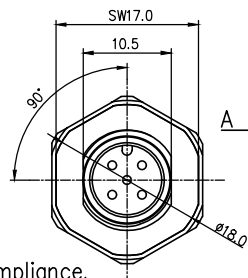


	1	2	3	4	5
	Coded	2circuits	3circuits	4circuits	5circuits
A	A-Coded				
	B-Coded				
B	D-Coded				
	VIEW A				



- Note:
1. Waterproof Rate: IP68
 2. This product must meet IEC61076-2-101
 3. This product must meet 2011/65/EU ROHS compliance.
 4. Not note tolerances: ±0.20
 5. Electronic wire UL 1569 PVC

TABLE 1

L (XXXX)	0050	0100	0150	0200	...	0990
	50mm	100mm	150mm	200mm	...	990mm
	1000	1500	2000	3000	...	9999
	1M	1.5M	2M	3M	...	9.999M
Dimensions L (mm)						
Range(length)	50 to 200	201 to 500	1001 to 5000	5000 to 9000		
Tolerance(mm)	±10	±15	±25	±30		
PACKING SPECIFICATION						
Range(length)	50 to 200	201 to 1000	1001 to 5000			
	5pcs/Bag	2pcs/Bag	1pcs/Bag			

Ordering Information

FM12WR11 06 - X XX P 1 XX XXXX 00
 1 2 3 4 5 6 7 8 9

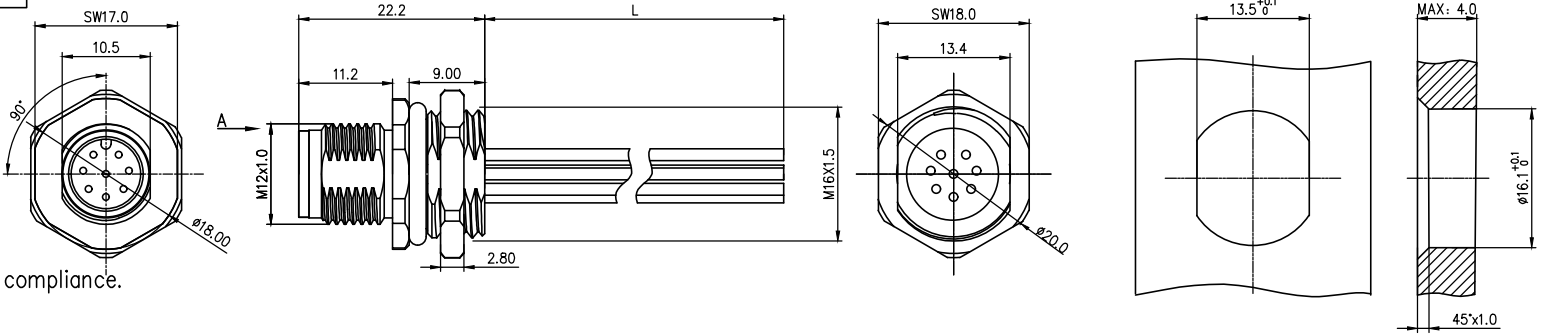
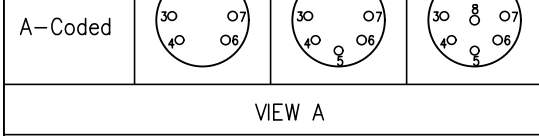
1 Category FM12W-M12 Wire	2 Mounting thread R11-Rear mounting M16x1.5	3 Distinction num. 06	4 Coded A-A CODED B-B CODED D-D CODED
5 Circuits 02-2Circuits 03-3Circuits ... 17-17Circuits	6 Contact P-Pin	7 Contact plating 1-Gold plated	8 Contact plating thickness 01-0.025µm 03-0.075µm
			9 Cable length XXXX-(see table1)

2Circuits (A/B/D)		3Circuits (A/B/D)		4Circuits (A/B/D)		5Circuits (A/B/D)		Installation category	
								single line	
3	Blue	3	Blue	3	Blue	3	Blue	Degree of protection	IP68(in mated condition)
1	Brown	1	Brown	1	Brown	1	Brown	Mechanical operation	> 100 mating cycles
				2	White	2	White	Upper temperature	105°C
				4	Black	4	Black	Lower temperature	-40°C
				5	Gray	5	Gray	Pollution degree	3
Circuits	wire color	Circuits	wire color	Circuits	wire color	Circuits	wire color	Overvoltage categorie	II
Circuits	Rated voltage	Rated impulse voltage	Rated current	Contact resistance	Insulation resistance	O.D	Wire size(mm ²) AWG	Material group	II
2Circuits	250V	2500V	4A	≤5mΩ	≥100MΩ	1.6	0.34mm ² /22AWG	Material of contact	CuZn
3Circuits	250V	2500V	4A	≤5mΩ	≥100MΩ	1.6	0.34mm ² /22AWG	Contact plating	Au
4Circuits	250V	2500V	4A	≤5mΩ	≥100MΩ	1.6	0.34mm ² /22AWG	Material of contact body	PA66
5Circuits	60V	1500V	4A	≤5mΩ	≥100MΩ	1.6	0.34mm ² /22AWG	Sealing	EPDM
								Material of housing	alloy

Recommended Panel Cut-Out

ELECTRICAL
1. Withstanding Voltage: DC 300V
2. Conduction Impedance: 3Ω (Max)
3. Insulation Resistance: 10MΩ (Min)

THIRD ANGLE PROJECTION	GENERAL TOLERANCES (UNLESS SPECIFIED)		APPROVE BY LEO	DATE 27/Apr/24	PART NO. FM12WR1106-XXXP1XXXXXX00	ITEM NO. FM12WR1106	 Building Technology Cornerstone		
	DESIGN UNITS METRIC		CHECKED BY GISELLE	DATE 27/Apr/24	TITLE M12 male socket, unshielded, with wire, 2~12 circuits, M16x1.5, rear lock, codes A/B/D, double flat position			REV 0	SHEET NO. 1/3
	SCALE 1:1	SIZE A4	DRAWN BY King		DATE 27/Apr/24	THIS DRAWING CONTAINS INFORMATION THAT IS PROPRIETARY TO TXGA INDUSTRIAL ELECTRONICS(S.Z)CO.,LTD AND SHOULD NOT BE USED WITHOUT WRITTEN PERMISSION			



- Note:
1. Waterproof Rate: IP68
 2. This product must meet IEC61076-2-101
 3. This product must meet 2011/65/EU ROHS compliance.
 4. Not note tolerances: ±0.20
 5. Electronic wire UL 1569 PVC

TABLE 1

L (XXXX)	0050	0100	0150	0200	...	0990
	50mm	100mm	150mm	200mm	...	990mm
	1000	1500	2000	3000	...	9999
	1M	1.5M	2M	3M	...	9.999M
Dimensions L (mm)						
Range(length)	50 to 200	201 to 500	1001 to 5000	5000 to 9000		
Tolerance(mm)	±10	±15	±25	±30		
PACKING SPECIFICATION						
Range(length)	50 to 200	201 to 1000	1001 to 5000			
	5pcs/Bag	2pcs/Bag	1pcs/Bag			

Ordering Information

FM12WR11
06
- X
XX
P
1
XX
XXXX
00

1
2
3
4
5
6
7
8
9

1 Category FM12W-M12 Wire	2 Mounting thread R11-Rear mounting M16X1.5	3 Distinction num. 06	4 Coded A-A CODED B-B CODED D-D CODED
5 Circuits 02-2Circuits 03-3Circuits ... 17-17Circuits	6 Contact P-Pin	7 Contact plating 1-Gold plated	8 Contact plating thickness 01-0.025μm 03-0.075μm
			9 Cable length XXXX-(see table1)

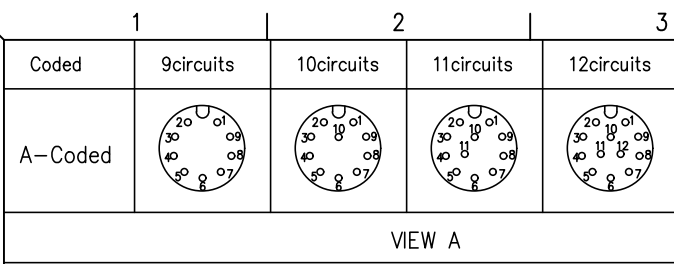
6Circuits		7Circuits		8Circuits	
Circuits	wire color	Circuits	wire color	Circuits	wire color
7	Blue	7	Blue	7	Blue
6	Pink	6	Pink	6	Pink
		5	Gray	5	Gray
4	Yellow	4	Yellow	4	Yellow
3	Green	3	Green	3	Green
2	Brown	2	Brown	2	Brown
1	White	1	White	1	White

Installation category	single line
Degree of protection	IP68(in mated condition)
Mechanical operation	> 100 mating cycles
Upper temperature	105°C
Lower temperature	-40°C
Pollution degree	3
Overvoltage categorie	II
Material group	II
Material of contact	CuZn
Contact plating	Au
Material of contact body	PA66
Sealing	EPDM
Material of housing	alloy

Circuits	Rated voltage	Rated impulse voltage	Rated current	Contact resistance	Insulation resistance	O.D	Wire size(mm ²) AWG
6Circuits	30V	800V	2A	≤5mΩ	≥100MΩ	1.4	0.25mm ² /24AWG
7Circuits	30V	800V	2A	≤5mΩ	≥100MΩ	1.4	0.25mm ² /24AWG
8Circuits	30V	800V	2A	≤5mΩ	≥100MΩ	1.4	0.25mm ² /24AWG

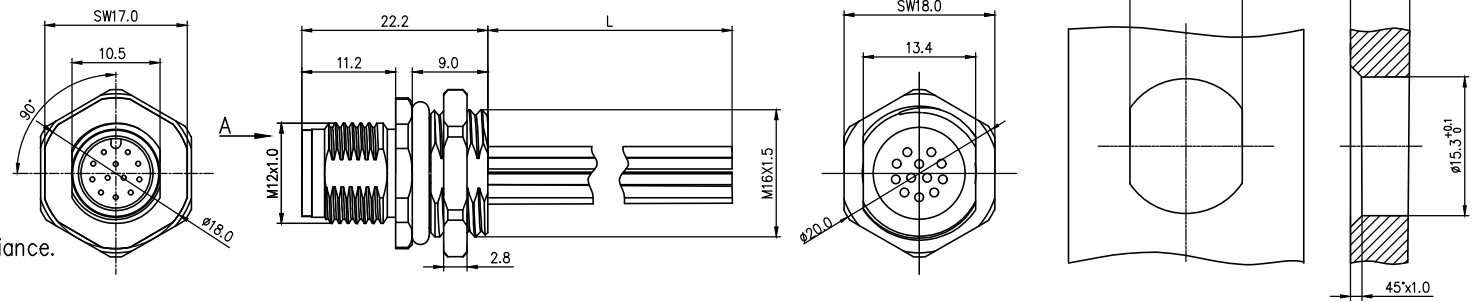
ELECTRICAL
1. Withstanding Voltage:DC 300V
2. Conduction Impedance: 3Ω (Max)
3. Insulation Resistance: 10MΩ(Min)

 THIRD ANGLE PROJECTION	GENERAL TOLERANCES (UNLESS SPECIFIED)		APPROVE BY LEO	DATE 27/Apr/24	PART NO. FM12WR1106-XXXP1XXXXXX00	ITEM NO. FM12WR1106	 Building Technology Cornerstone
	X. ±0.30	X.* ±5°	CHECKED BY GISELLE	DATE 27/Apr/24	TITLE M12 male socket, unshielded, with wire, 2~12 circuits, M16X1.5, rear lock, codes A/B/D, double flat position		
	DESIGN UNITS METRIC	X.X ±0.20	X.XX* ±2°	DRAWN BY King	DATE 27/Apr/24	THIS DRAWING CONTAINS INFORMATION THAT IS PROPRIETARY TO TXGA INDUSTRIAL ELECTRONICS(S.Z)CO.,LTD AND SHOULD NOT BE USED WITHOUT WRITTEN PERMISSION	
SCALE 1:1	SIZE A4	X.XXX ±0.10	X.XXX* ±0.5°			REV 0	SHEET NO. 2/3



VIEW A

- Note:
1. Waterproof Rate: IP68
 2. This product must meet IEC61076-2-101
 3. This product must meet 2011/65/EU ROHS compliance.
 4. Not note tolerances: ± 0.20
 5. Electronic wire UL 1569 PVC



Recommended Panel Cut-Out

TABLE 1

L (XXXX)	0050	0100	0150	0200	...	0990
	50mm	100mm	150mm	200mm	...	990mm
	1000	1500	2000	3000	...	9999
	1M	1.5M	2M	3M	...	9.999M
Dimensions L (mm)						
Range(length)	50 to 200	201 to 500	1001 to 5000	5000 to 9000		
Tolerance(mm)	± 10	± 15	± 25	± 30		
PACKING SPECIFICATION						
Range(length)	50 to 200	201 to 1000	1001 to 5000			
	5pcs/Bag	2pcs/Bag	1pcs/Bag			

Ordering Information

FM12WR11 06 - X XX P 1 XX XXXX 00
 1 2 3 4 5 6 7 8 9

1 Category FM12W-M12 Wire	2 Mounting thread R11-Rear mounting M16X1.5	3 Distinction num. 06	4 Coded A-A CODED B-B CODED D-D CODED
5 Circuits 02-2Circuits 03-3Circuits ... 17-17Circuits	6 Contact P-Pin	7 Contact plating 1-Gold plated	8 Contact plating thickness 01-0.025 μ m 03-0.075 μ m
9 Cable length XXXX-(see table1)			

Circuits	Rated voltage	Rated impulse voltage	Rated current	Contact resistance	Insulation resistance	OD	Wire size(mm ²) AWG
9Circuits	30V	800V	1.5A	$\leq 5m\Omega$	$\geq 100M\Omega$	1.3	0.14mm ² /26AWG
10Circuits	30V	800V	1.5A	$\leq 5m\Omega$	$\geq 100M\Omega$	1.3	0.14mm ² /26AWG
11Circuits	30V	800V	1.5A	$\leq 5m\Omega$	$\geq 100M\Omega$	1.3	0.14mm ² /26AWG
12Circuits	30V	800V	1.5A	$\leq 5m\Omega$	$\geq 100M\Omega$	1.3	0.14mm ² /26AWG

				9Circuits	10Circuits	11Circuits	12Circuits	Installation category	single line
								Degree of protection	IP68(in mated condition)
								Mechanical operation	> 100 mating cycles
								Upper temperature	105°C
								Lower temperature	-40°C
								Pollution degree	3
								Overtoltage categorie	II
								Material group	II
								Material of contact	CuZn
								Contact plating	Au
								Material of contact body	PA66
								Sealing	EPDM
								Material of housing	alloy

ELECTRICAL		
1. Withstanding Voltage: DC 300V		
2. Conduction Impedance: 3 Ω (Max)		
3. Insulation Resistance: 10M Ω (Min)		

 THIRD ANGLE PROJECTION DESIGN UNITS METRIC SCALE 1:1 SIZE A4	GENERAL TOLERANCES (UNLESS SPECIFIED)		APPROVE BY	DATE	PART NO.	ITEM NO.	 Building Technology Cornerstone REV 0 SHEET NO. 3/3
	X. ± 0.30	X.' $\pm 5^{\circ}$	LEO	27/Apr/24	FM12WR1106-XXXP1XXXXXX00	FM12WR1106	
	X.X ± 0.20	X.X' $\pm 2^{\circ}$	CHECKED BY	DATE	TITLE		
	X.XX ± 0.15	X.XX' $\pm 1^{\circ}$	GISELLE	27/Apr/24	M12 male socket, unshielded, with wire, 2~12 circuits, M16X1.5, rear lock, codes A/B/D, double flat position		
X.XXX ± 0.10	X.XXX' $\pm 0.5^{\circ}$	DRAWN BY	DATE	THIS DRAWING CONTAINS INFORMATION THAT IS PROPRIETARY TO TXGA INDUSTRIAL ELECTRONICS(S.Z)CO.,LTD AND SHOULD NOT BE USED WITHOUT WRITTEN PERMISSION			
		King	27/Apr/24				