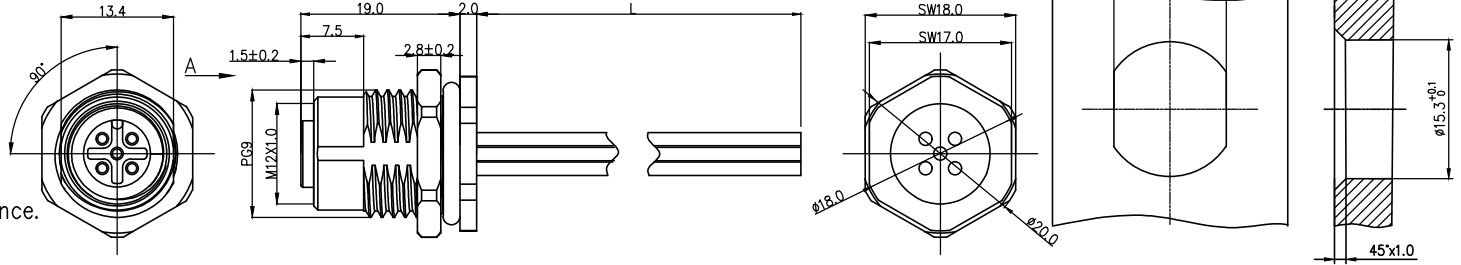


- Note:
1. Waterproof Rate: IP68
 2. This product must meet IEC61076-2-101
 3. This product must meet 2011/65/EU ROHS compliance.
 4. Not note tolerances: ±0.20
 5. Electronic wire UL 1569 PVC



Recommended Panel Cut-Out

TABLE 1

| | | | | | | |
|-----------------------|-----------|-------------|--------------|--------------|-----|--------|
| L (XXXX) | 0050 | 0100 | 0150 | 0200 | ... | 0990 |
| | 50mm | 100mm | 150mm | 200mm | ... | 990mm |
| | 1000 | 1500 | 2000 | 3000 | ... | 9999 |
| | 1M | 1.5M | 2M | 3M | ... | 9.999M |
| Dimensions L (mm) | | | | | | |
| Range(length) | 50 to 200 | 201 to 500 | 1001 to 5000 | 5000 to 9000 | | |
| Tolerance(mm) | ±10 | ±15 | ±25 | ±30 | | |
| PACKING SPECIFICATION | | | | | | |
| Range(length) | 50 to 200 | 201 to 1000 | 1001 to 5000 | | | |
| | 5pcs/Bag | 2pcs/Bag | 1pcs/Bag | | | |

Ordering Information

FM12W T15 02 - X XX S 1 XX XXXX 00
 1 2 3 4 5 6 7 8 9

| | | | |
|--|---|-------------------------------------|---|
| 1 Category FM12W-M12 Wire | 2 Mounting thread T15-Front mounting PG9 | 3 Distinction num. 02 | 4 Coded A-A CODED B-B CODED D-D CODED |
| 5 Circuits 02-2Circuits 03-3Circuits ... 17-17Circuits | 6 Contact S- Socket | 7 Contact plating 1- Gold plated | 8 Contact plating thickness 01-0.025μm 03-0.075μm |
| | | | 9 Cable length XXXX-(see table1) |

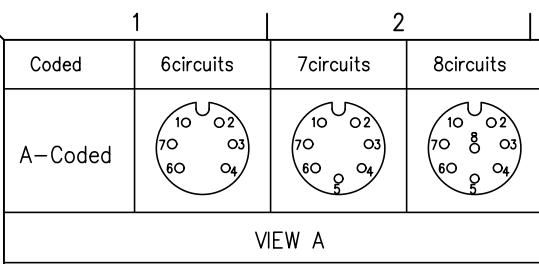
| 2Circuits (A/B/D) | | 3Circuits (A/B/D) | | 4Circuits (A/B/D) | | 5Circuits (A/B/D) | | Installation category | single line |
|-------------------|--|-------------------|--|-------------------|--|-------------------|--|--------------------------|--------------------------|
| | | | | | | | | Degree of protection | IP68(in mated condition) |
| | | | | | | | | Mechanical operation | > 100 mating cycles |
| | | | | | | | | Upper temperature | 105°C |
| | | | | | | | | Lower temperature | -40°C |
| | | | | | | | | Pollution degree | 3 |
| | | | | | | | | Overvoltage categorie | II |
| | | | | | | | | Material group | II |
| | | | | | | | | Material of contact | CuZn |
| | | | | | | | | Contact plating | Au |
| | | | | | | | | Material of contact body | PA66 |
| | | | | | | | | Sealing | EPDM |
| | | | | | | | | Material of housing | alloy |

| |
|--------------------------------------|
| ELECTRICAL |
| 1. Withstanding Voltage: DC 300V |
| 2. Conduction Impedance: 3Ω (Max) |
| 3. Insulation Resistance: 10MΩ (Min) |

| | | | | | | |
|------------------------|---------------------------------------|-------------|---------------|-----------|---|--|
| THIRD ANGLE PROJECTION | GENERAL TOLERANCES (UNLESS SPECIFIED) | | APPROVE BY | DATE | PART NO. | ITEM NO. |
| | X. ±0.30 | X.* ±5° | LEO | 27/Apr/24 | FM12WT1502-XXXS1XXXXXX00 | FM12WT1502 |
| | X.X ±0.20 | X.X.* ±2° | CHECKED BY | DATE | TITLE | |
| DESIGN UNITS METRIC | X.XX ±0.15 | X.XX.* ±1° | GISELLE | 27/Apr/24 | M12 female socket, unshielded, with wire, 2~12 circuits, PG9, front lock, codes A/B/D, double flat position | |
| SCALE 1:1 | SIZE A4 | X.XXX ±0.10 | X.XXX.* ±0.5° | DRAWN BY | DATE | THIS DRAWING CONTAINS INFORMATION THAT IS PROPRIETARY TO TXGA INDUSTRIAL ELECTRONICS(S.Z)CO.,LTD AND SHOULD NOT BE USED WITHOUT WRITTEN PERMISSION |
| | | | King | 27/Apr/24 | | REV 0 SHEET NO. 1/3 |

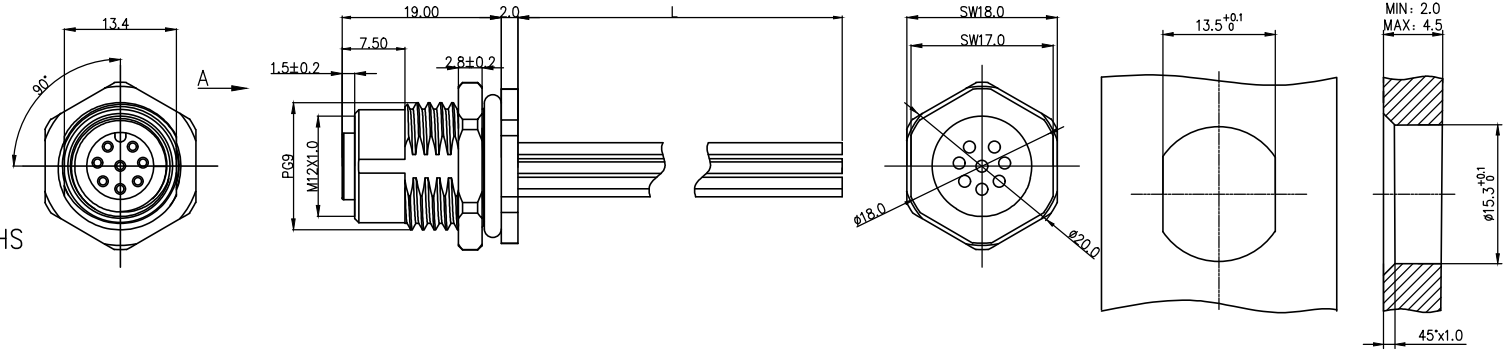


Building Technology Cornerstone



| REV | LOCATIONS | DESCRIPTION | DATE | REVISER | APPD |
|-----|-----------|-------------|------|---------|------|
| | | | | | |

Note:
 1. Waterproof Rate: IP68
 2. This product must meet IEC61076-2-101
 3. This product must meet 2011/65/EU ROHS compliance.
 4. Not note tolerances: ±0.20
 5. Electronic wire UL 1569 PVC



Recommended Panel Cut-Out

TABLE 1

| | | | | | | |
|-----------------------|-----------|-------------|--------------|--------------|-----|--------|
| L (XXXX) | 0050 | 0100 | 0150 | 0200 | ... | 0990 |
| | 50mm | 100mm | 150mm | 200mm | ... | 990mm |
| | 1000 | 1500 | 2000 | 3000 | ... | 9999 |
| | 1M | 1.5M | 2M | 3M | ... | 9.999M |
| Dimensions L (mm) | | | | | | |
| Range(length) | 50 to 200 | 201 to 500 | 1001 to 5000 | 5000 to 9000 | | |
| Tolerance(mm) | ±10 | ±15 | ±25 | ±30 | | |
| PACKING SPECIFICATION | | | | | | |
| Range(length) | 50 to 200 | 201 to 1000 | 1001 to 5000 | | | |
| | 5pcs/Bag | 2pcs/Bag | 1pcs/Bag | | | |

Ordering Information

FM12W T15 02 - X XX S 1 XX XXXX 00
 1 2 3 4 5 6 7 8 9

| | | | |
|--|---|------------------------------------|---|
| 1 Category FM12W-M12 Wire | 2 Mounting thread T15-Front mounting PG9 | 3 Distinction num. 02 | 4 Coded A-A CODED B-B CODED D-D CODED |
| 5 Circuits 02-2Circuits 03-3Circuits ... 17-17Circuits | 6 Contact S-socket | 7 Contact plating 1-Gold plated | 8 Contact plating thickness 01-0.025μm 03-0.075μm |
| | | | 9 Cable length XXXX-(see table1) |

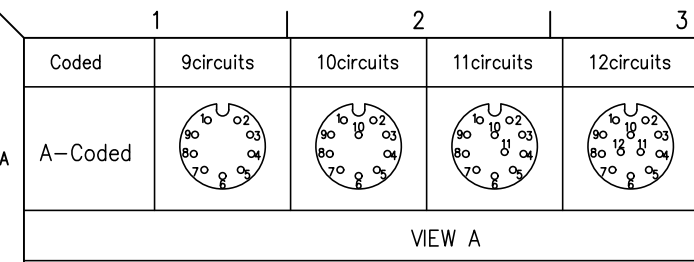
| 6Circuits | | 7Circuits | | 8Circuits | |
|-----------|------------|-----------|------------|-----------|------------|
| | | | | | |
| 7 | Blue | 7 | Blue | 7 | Blue |
| 6 | Pink | 6 | Pink | 6 | Pink |
| | | 5 | Gray | 5 | Gray |
| 4 | Yellow | 4 | Yellow | 4 | Yellow |
| 3 | Green | 3 | Green | 3 | Green |
| 2 | Brown | 2 | Brown | 2 | Brown |
| 1 | White | 1 | White | 1 | White |
| Circuits | wire color | Circuits | wire color | Circuits | wire color |

| | |
|--------------------------|--------------------------|
| Installation category | single line |
| Degree of protection | IP68(in mated condition) |
| Mechanical operation | > 100 mating cycles |
| Upper temperature | 105°C |
| Lower temperature | -40°C |
| Pollution degree | 3 |
| Overvoltage categorie | II |
| Material group | II |
| Material of contact | CuZn |
| Contact plating | Au |
| Material of contact body | PA66 |
| Sealing | EPDM |
| Material of housing | alloy |

| Circuits | Rated voltage | Rated impulse voltage | Rated current | Contact resistance | Insulation resistance | O.D | Wire size(mm ²) AWG |
|-----------|---------------|-----------------------|---------------|--------------------|-----------------------|-----|---------------------------------|
| 6Circuits | 30V | 800V | 2A | ≤5mΩ | ≥100MΩ | 1.4 | 0.25mm ² /24AWG |
| 7Circuits | 30V | 800V | 2A | ≤5mΩ | ≥100MΩ | 1.4 | 0.25mm ² /24AWG |
| 8Circuits | 30V | 800V | 2A | ≤5mΩ | ≥100MΩ | 1.4 | 0.25mm ² /24AWG |

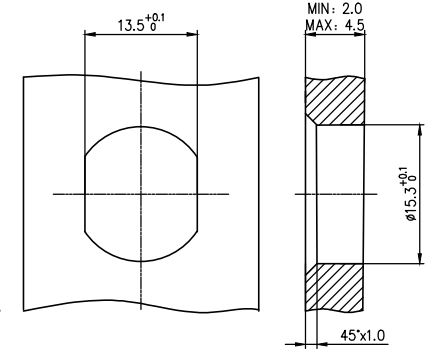
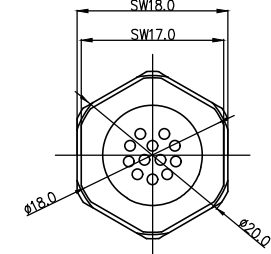
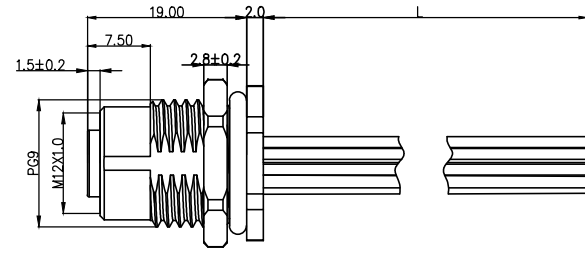
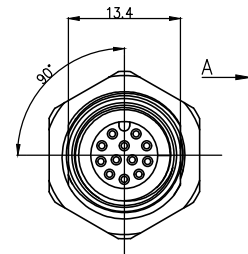
| |
|--------------------------------------|
| ELECTRICAL |
| 1. Withstanding Voltage: DC 300V |
| 2. Conduction Impedance: 3Ω (Max) |
| 3. Insulation Resistance: 10MΩ (Min) |

| | | | | | | |
|--|--|--|--|---|--|--|
| THIRD ANGLE PROJECTION DESIGN UNITS METRIC SCALE 1:1 SIZE A4 | GENERAL TOLERANCES (UNLESS SPECIFIED) X. ±0.30 X.* ±5' X.X ±0.20 X.X* ±2' X.XX ±0.15 X.XX* ±1' X.XXX ±0.10 X.XXX* ±0.5' | | APPROVE BY LEO CHECKED BY GISELLE DRAWN BY King | DATE 27/Apr/24 DATE 27/Apr/24 DATE 27/Apr/24 | PART NO. FM12WT1502-XXXS1XXXXXX00 ITEM NO. FM12WT1502 | Building Technology Cornerstone REV 0 SHEET NO. 2/3 |
| | TITLE M12 female socket, unshielded, with wire, 2~12 circuits, PG9, front lock, codes A/B/D, double flat position | | | | | |
| | THIS DRAWING CONTAINS INFORMATION THAT IS PROPRIETARY TO TXGA INDUSTRIAL ELECTRONICS(S.Z)CO.,LTD AND SHOULD NOT BE USED WITHOUT WRITTEN PERMISSION | | | | | |



VIEW A

Note:
 1. Waterproof Rate: IP68
 2. This product must meet IEC61076-2-101
 3. This product must meet 2011/65/EU ROHS compliance.
 5. Electronic wire UL 1569 PVC



Recommended Panel Cut-Out

TABLE 1

| | | | | | | |
|-----------------------|-----------|-------------|--------------|--------------|-----|--------|
| L (XXXX) | 0050 | 0100 | 0150 | 0200 | ... | 0990 |
| | 50mm | 100mm | 150mm | 200mm | ... | 990mm |
| | 1000 | 1500 | 2000 | 3000 | ... | 9999 |
| | 1M | 1.5M | 2M | 3M | ... | 9.999M |
| Dimensions L (mm) | | | | | | |
| Range(length) | 50 to 200 | 201 to 500 | 1001 to 5000 | 5000 to 9000 | | |
| Tolerance(mm) | ±10 | ±15 | ±25 | ±30 | | |
| PACKING SPECIFICATION | | | | | | |
| Range(length) | 50 to 200 | 201 to 1000 | 1001 to 5000 | | | |
| | 5pcs/Bag | 2pcs/Bag | 1pcs/Bag | | | |

Ordering Information

FM12W T15 02 - X XX S 1 XX XXXX 00
 1 2 3 4 5 6 7 8 9

| | | | |
|--|---|------------------------------------|---|
| 1 Category FM12W-M12 Wire | 2 Mounting thread T15-Front mounting PG9 | 3 Distinction num. 02 | 4 Coded A-A CODED B-B CODED D-D CODED |
| 5 Circuits 02-2Circuits 03-3Circuits ... 17-17Circuits | 6 Contact S-socket | 7 Contact plating 1-Gold plated | 8 Contact plating thickness 01-0.025µm 03-0.075µm |
| 9 Cable length XXXX-(see table) | | | |

| Circuits | Rated voltage | Rated impulse voltage | Rated current | Contact resistance | Insulation resistance | OD | Wire size(mm²) AWG |
|------------|---------------|-----------------------|---------------|--------------------|-----------------------|-----|--------------------|
| 9Circuits | 30V | 800V | 1.5A | ≤5mΩ | ≥100MΩ | 1.3 | 0.14mm²/26AWG |
| 10Circuits | 30V | 800V | 1.5A | ≤5mΩ | ≥100MΩ | 1.3 | 0.14mm²/26AWG |
| 11Circuits | 30V | 800V | 1.5A | ≤5mΩ | ≥100MΩ | 1.3 | 0.14mm²/26AWG |
| 12Circuits | 30V | 800V | 1.5A | ≤5mΩ | ≥100MΩ | 1.3 | 0.14mm²/26AWG |

| 9Circuits | 10Circuits | 11Circuits | 12Circuits | Installation category | single line |
|-----------|------------|------------|------------|--------------------------|--------------------------|
| | | | | Degree of protection | IP68(in mated condition) |
| | | | | Mechanical operation | > 100 mating cycles |
| | | | | Upper temperature | 105°C |
| | | | | Lower temperature | -40°C |
| | | | | Pollution degree | 3 |
| | | | | Overtoltage categorie | II |
| | | | | Material group | II |
| | | | | Material of contact | CuZn |
| | | | | Contact plating | Au |
| | | | | Material of contact body | PA66 |
| | | | | Sealing | EPDM |
| | | | | Material of housing | alloy |

| |
|--------------------------------------|
| ELECTRICAL |
| 1. Withstanding Voltage: DC 300V |
| 2. Conduction Impedance: 3Ω (Max) |
| 3. Insulation Resistance: 10MΩ (Min) |

| | | | | | | | |
|--|---------------------------------------|-----------|--------------------|----------------|--|---------------------|--|
| THIRD ANGLE PROJECTION DESIGN UNITS METRIC SCALE 1:1 SIZE A4 | GENERAL TOLERANCES (UNLESS SPECIFIED) | | APPROVE BY LEO | DATE 27/Apr/24 | PART NO. FM12WT1502-XXXS1XXXXXX00 | ITEM NO. FM12WT1502 | Building Technology Cornerstone REV 0 SHEET NO. 3/3 |
| | X. ±0.30 | X.* ±5' | CHECKED BY GISELLE | DATE 27/Apr/24 | TITLE M12 female socket, unshielded, with wire, 2~12 circuits, PG9, front lock, codes A/B/D, double flat position | | |
| | X.X ±0.20 | X.XX' ±2' | DRAWN BY King | DATE 27/Apr/24 | THIS DRAWING CONTAINS INFORMATION THAT IS PROPRIETARY TO TXGA INDUSTRIAL ELECTRONICS(S.Z)CO.,LTD AND SHOULD NOT BE USED WITHOUT WRITTEN PERMISSION | | |
| | X.XX ±0.15 | X.XX' ±1' | | | | | |