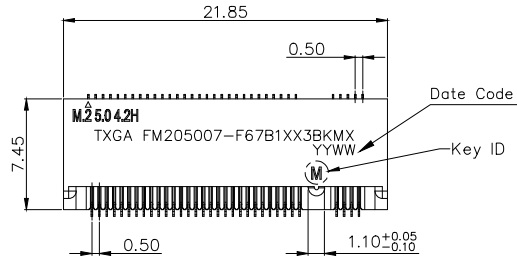
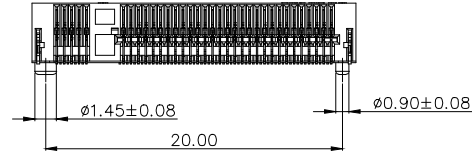
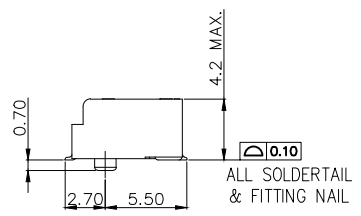
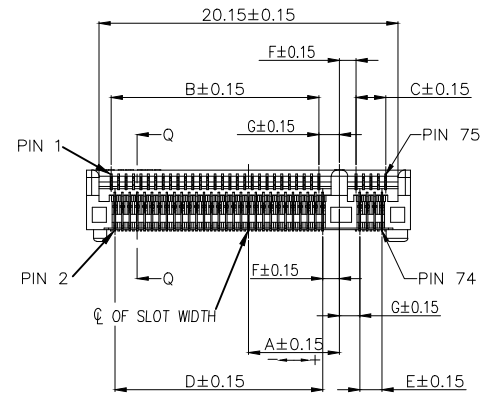


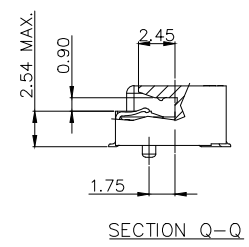
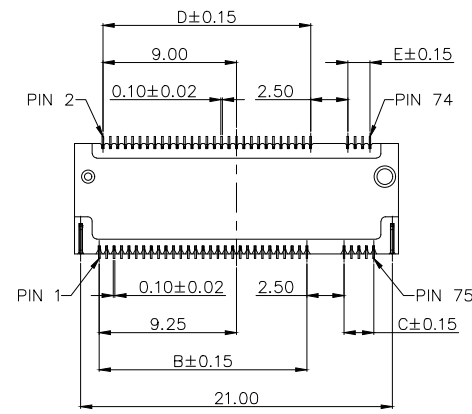
REV	LOCATIONS	DESCRIPTION	DATE	REVISER	APPD



**SPECIFICATION**  
**Electrical**  
 Current Rating: 0.5A AC(rms)/DC  
 Voltage Rating: 50V AC(rms)/DC  
 Contact Resistance: 55 mΩ Max  
 Insulation Resistance: 500 MΩ MIN  
 Withstanding Voltage: 300V AC r.m.s  
 Temperature Range-Operating: -40°C~+80°C  
**Material**  
 Housing: LCP (UL 94V-0)  
 Contact: Copper Alloy/Gold Plated.  
 Fitting nail: Copper Alloy/100u'MIN.Matte-tin  
 Plating on the soldering Area,50u'MIN.Nickel under;ating overall.  
 Ground bar: SUS.



Circuits (n)	Part No.	Dimensions						
		A	B	C	D	E	F	G
67	FM205007-F67B1XX3BKMM	6.125	14.0	2.0	14.0	1.5	1.125	1.375



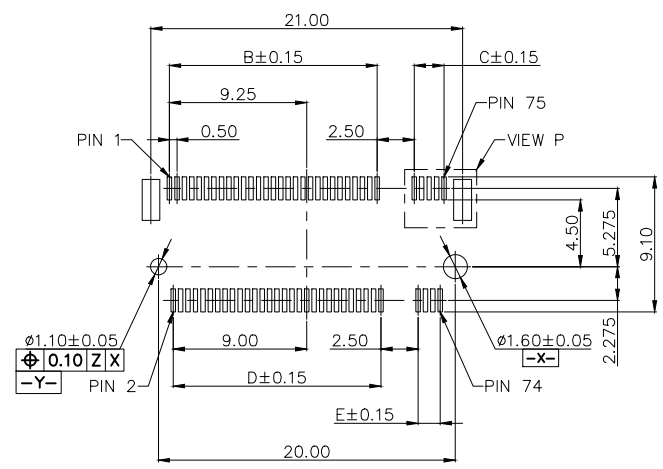
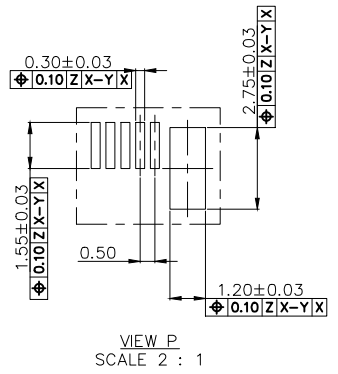
**Ordering Information**

FM2 050 07 - F 67 B 1 XX 3 BK M X  
 1 2 3 4 5 6 7 8 9 10 11 12

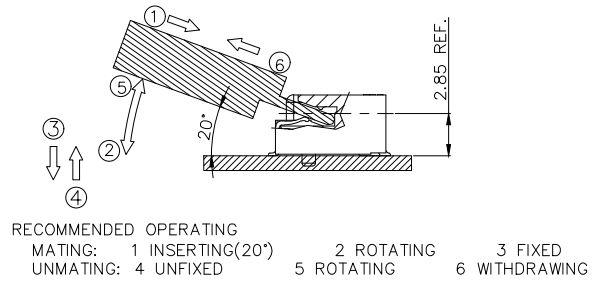
1	Category	2	Series Number	3	Distinction No.	4	Type	5	Circuits	6	Entry Angle
	FM2-M.2 Connector		050-Pitch0.50mm		07		F-Female		67		B-90°Angle
7	Plating	8	thickness of Gold Plating	9	Material-Resin	10	Color-Resin	11	Packaging	12	Key ID
	1-Gold Plated		00-Gold Flash 15-15u" 30-30u"		3-LCP		BK-Black		M-Reel		M-M

<p>THIRD ANGLE PROJECTION</p>	<b>GENERAL TOLERANCES (UNLESS SPECIFIED)</b> X. ±0.30 X.* ±5* X.X ±0.20 X.X* ±2* X.XX ±0.15 X.XX* ±1* X.XXX ±0.10 X.XXX* ±0.5*		APPROVE BY LEO	DATE 19/Sept/23	PART NO. FM205007-F67B1XX3BKMX	ITEM NO. FM205007	<p><b>TXGA</b>                  Building Technology Cornerstone</p>
	DESIGN UNITS METRIC(mm)	SCALE 5:1	SIZE A4	CHECKED BY GISELLE	DATE 19/Sept/23	TITLE M.2 Connector(H4.2mm) Pitch 0.5mm 90°Angle(Gen5)	
THIS DRAWING CONTAINS INFORMATION THAT IS PROPRIETARY TO TXGA INDUSTRIAL ELECTRONICS(S.Z)CO.,LTD AND SHOULD NOT BE USED WITHOUT WRITTEN PERMISSION							

REV	LOCATIONS	DESCRIPTION	DATE	REVISER	APPD



Recommended P.C.Board Layout  
 General tolerances:±0.05

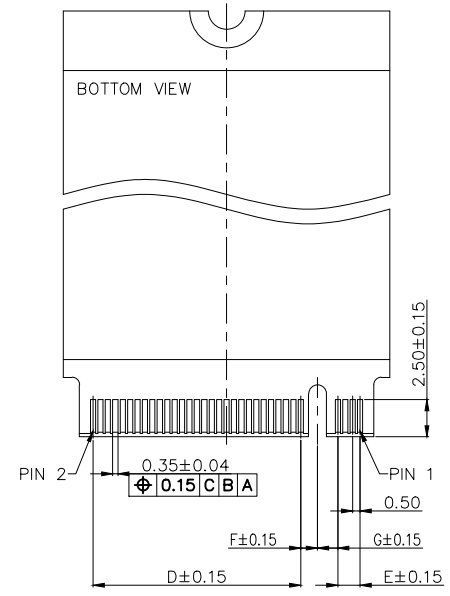
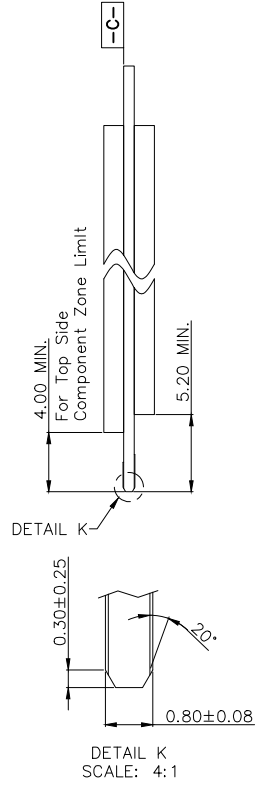
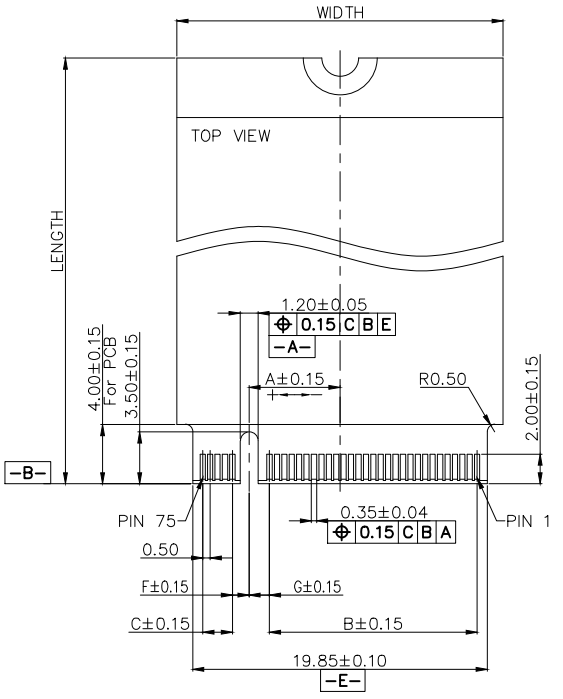


A  
B  
C  
D  
E  
F

A  
B  
C  
D  
E  
F

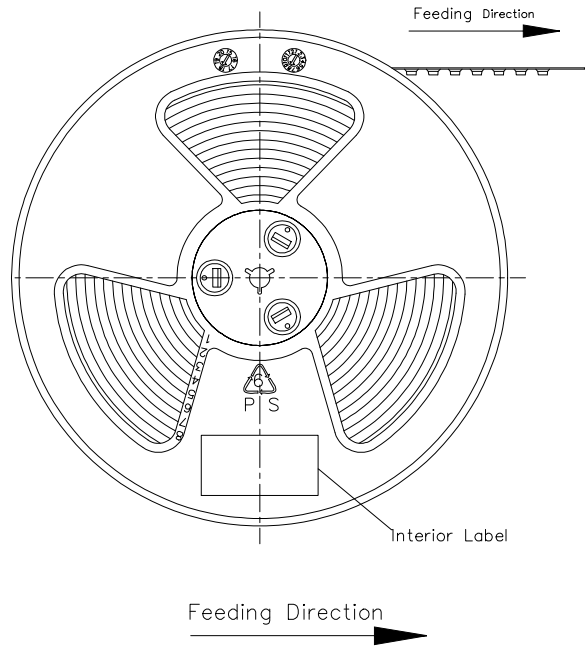
<p>THIRD ANGLE PROJECTION</p>	GENERAL TOLERANCES (UNLESS SPECIFIED)		APPROVE BY LEO	DATE 19/Sept/23	PART NO. FM205007-F67B1XX3BKMX	ITEM NO. FM205007	<p>Building Technology Cornerstone</p>
	X. ±0.30 X.X ±0.20 X.XX ±0.15 X.XXX ±0.10	X.* ±5° X.X* ±2° X.XX* ±1° X.XXX* ±0.5°	CHECKED BY GISELLE	DATE 19/Sept/23	TITLE M.2 Connector(H4.2mm) Pitch 0.5mm 90°Angle(Gen5)	REV 0	
SCALE 5:1	SIZE A4	DRAWN BY Hejianpeng	DATE 19/Sept/23	THIS DRAWING CONTAINS INFORMATION THAT IS PROPRIETARY TO TXGA INDUSTRIAL ELECTRONICS(S.Z)CO.,LTD AND SHOULD NOT BE USED WITHOUT WRITTEN PERMISSION			

REV	LOCATIONS	DESCRIPTION	DATE	REVISER	APPD

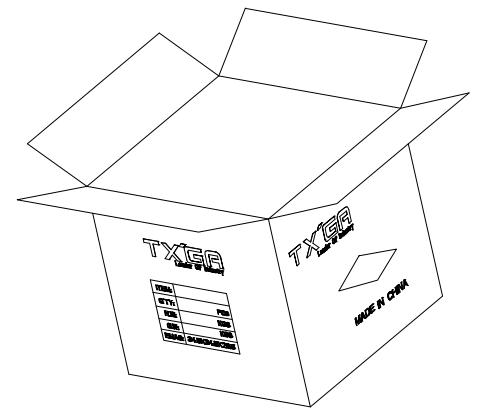
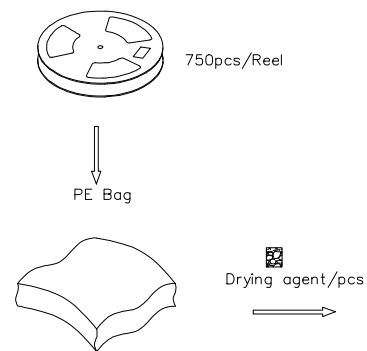
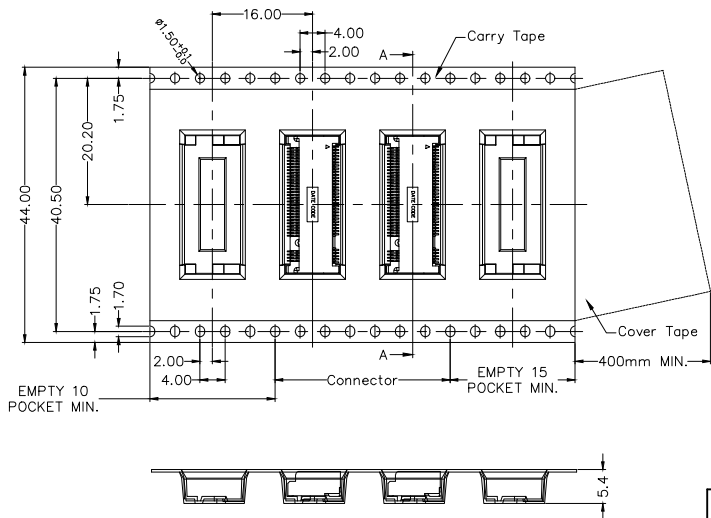
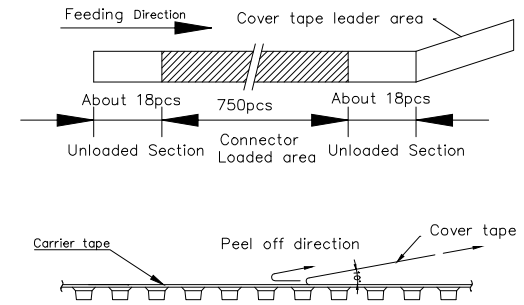


<p>THIRD ANGLE PROJECTION</p>	GENERAL TOLERANCES (UNLESS SPECIFIED)		APPROVE BY	DATE	PART NO.	ITEM NO.	<p>Building Technology Cornerstone</p>	
	X. ±0.30	X.' ±5°	LEO	19/Sept/23	FM205007-F67B1XX3BKMX	FM205007		
	DESIGN UNITS METRIC(mm)		CHECKED BY	DATE	TITLE		REV 0	SHEET NO. 3/4
	SCALE 5:1	SIZE A4	X.X ±0.20	X.X' ±2°	GISELLE	19/Sept/23	M.2 Connector(H4.2mm) Pitch 0.5mm 90°Angle(Gen5)	
		X.XX ±0.15	X.XX' ±1°	DRAWN BY	DATE	THIS DRAWING CONTAINS INFORMATION THAT IS PROPRIETARY TO TXGA INDUSTRIAL ELECTRONICS(S.Z)CO.,LTD AND SHOULD NOT BE USED WITHOUT WRITTEN PERMISSION		
		X.XXX ±0.10	X.XXX' ±0.5°	Hejianpeng	19/Sept/23			

REV	LOCATIONS	DESCRIPTION	DATE	REVISER	APPD



- Note:
- 1.10 sprocket hole cumulative tolerance  $\pm 0.2$
  2. Carrier camber is within 1.0mm in 250mm
  3. Material: Clear conductive polystyrene Alloy 100% recyclable
  4. All dimensions meet EIA-481-3 requirements
  5. Peel off force of cover tape & carrier tape: 20g~130g (0.2N~1.3N)
  6. Component load per 13" reel: 750 pcs



<p>THIRD ANGLE PROJECTION</p>	GENERAL TOLERANCES (UNLESS SPECIFIED)		APPROVE BY	DATE	PART NO.	ITEM NO.	<p>Building Technology Cornerstone</p>	
	X. $\pm 0.30$	X.' $\pm 5^{\circ}$	LEO	19/Sept/23	FM205007-F67B1XX3BKMX	FM205007		
	DESIGN UNITS METRIC(mm)		CHECKED BY	DATE	TITLE		REV 0	SHEET NO. 4/4
	X.X $\pm 0.20$	X.X' $\pm 2^{\circ}$	GISELLE	19/Sept/23	M.2 Connector(H4.2mm) Pitch 0.5mm 90°Angle(Gen5)		THIS DRAWING CONTAINS INFORMATION THAT IS PROPRIETARY TO TXGA INDUSTRIAL ELECTRONICS(S,Z)CO.,LTD AND SHOULD NOT BE USED WITHOUT WRITTEN PERMISSION	
SCALE 1:1	SIZE A4	X.XX $\pm 0.15$	X.XX' $\pm 1^{\circ}$	DRAWN BY	DATE			
		X.XXX $\pm 0.10$	X.XXX' $\pm 0.5^{\circ}$	Hejianpeng	19/Sept/23			