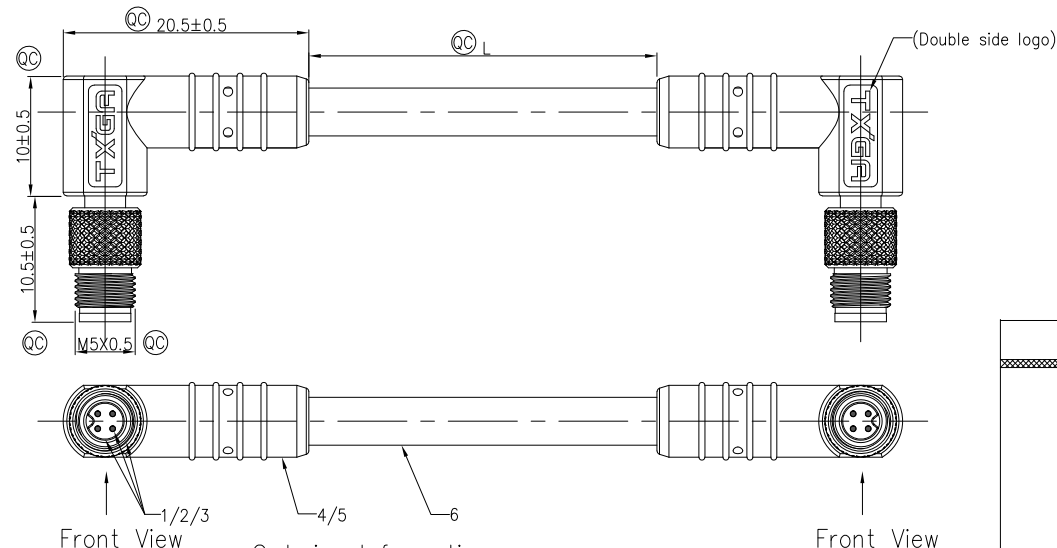


1	2	3	4	5	6	7	8			
Circuits Coded	2Circuits	3Circuits	4Circuits		REV	LOCATIONS	DESCRIPTION	DATE	REVISER	APPD
A-Coded					0		New Release	6/June		FRANK

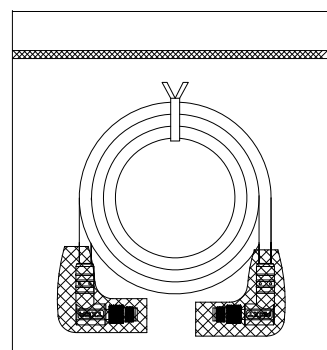
WIRING CHART	1	Brown	1	Brown	1	Brown
	2		2		2	White
	3	Blue	3	Blue	3	Blue
	4		4	Black	4	Black

Note:  
 1. Ⓞ Important Dimension  
 2. Degree of protection: IP68  
 3. This product must meet IEC61076-2-105  
 4. This product must meet 2011/65/EU ROHS compliance.  
 5. Not note tolerances: ±0.20  
 6. Rated voltage: 60V, Rated current 1A  
 7. Temperature range: -40°C~+105°C  
 8. Mechanical operation: >100 mating cycles  
 9. Wire Size(mm<sup>2</sup>)/AWG: 0.14mm<sup>2</sup>/26AWG  
 10. Flame test: UL94V-0



Dimensions L (mm)				
Range(length)	50 to 200	201 to 1000	1001 to 5000	5000 to 9000
Tolerance(mm)	±15	±30	±50	±100

Packaging:



Male Front View

	2Circuits	3Circuits	4Circuits
90°			

Ordering Information  
 FM5C 09 01 03 - A XX R XXXXX 00

- 1 Series Name FM5C-M5 Cable
- 2 Cable 09-Male Right Angle Plug
- 3 thread type 01-M5X0.5
- 4 Distinction No. 03
- 5 Coded A-A CODED
- 6 Circuits 02-2Circuits 03-3Circuits 04-4Circuits
- 7 Key Angle R-90°
- 8 Length XXXXX-(see table1)

TABLE 1

CABLE LENGTH (XXXX)	00050	00100	00150	00200	.....	00990
	50mm	100mm	150mm	200mm	.....	990mm
	01000	01500	02000	03000	.....	99900
	1M	1.5M	2M	3M	.....	99.9M

6	4C*26AWG,OD 4.0MM,PVC,Black
5	Overmold: PVC30P,Black
4	innermold: PVC30P,Black
3	Screw: Copper alloy Plated Ni
2	Housing: PA,Black
1	Male Pin: Copper alloy Plated Gold
NO.	SPECIFICATION

<b>ELECTRICAL</b>
1. Withstanding Voltage: DC 300V
2. Conduction Impedance: 3Ω (Max)
3. Insulation Resistance: 10MΩ (Min)
<b>PACKING SPECIFICATION</b>
1.1pcs/Bag
2. Ⓞ as the key size control
<b>NOTES</b>
1. This product must meet UL486A-1991 mechanical performance
2. This product must meet 2011/65/EU ROHS compliance

THIRD ANGLE PROJECTION	GENERAL TOLERANCES (UNLESS SPECIFIED)		APPROVE BY	DATE	PART NO.	ITEM NO.
	X.±(0.30)	.X'±5'	FRANK	13/July/23	FM5C090103-AXRXXXXX00	FM5C090103
	DESIGN UNITS Metric	X.XX±(0.20)	CHECKED BY	DATE	TITLE	
	SCALE 2:1	.XX±1'	CHERRY	13/July/23	M5X0.5 CABLE Right Angle SINGLE END MALE SIDE UNSHIELDED	
SIZE A4	X.XXX±(0.10)	.XXX±0.5'	DRAWN BY DANIEL	DATE 13/July/23	THIS DRAWING CONTAINS INFORMATION THAT IS PROPRIETARY TO TXGA INDUSTRIAL ELECTRONICS(S.Z)CO.,LTD AND SHOULD NOT BE USED WITHOUT WRITTEN PERMISSION	
					REV 0	SHEET NO. 1/1

