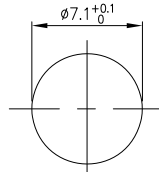


Circuits Coded	2Circuits	3Circuits	4Circuits
A-Coded			

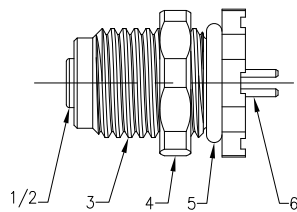
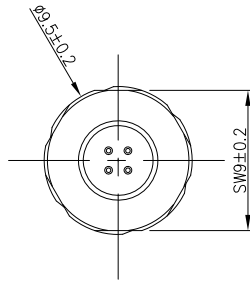
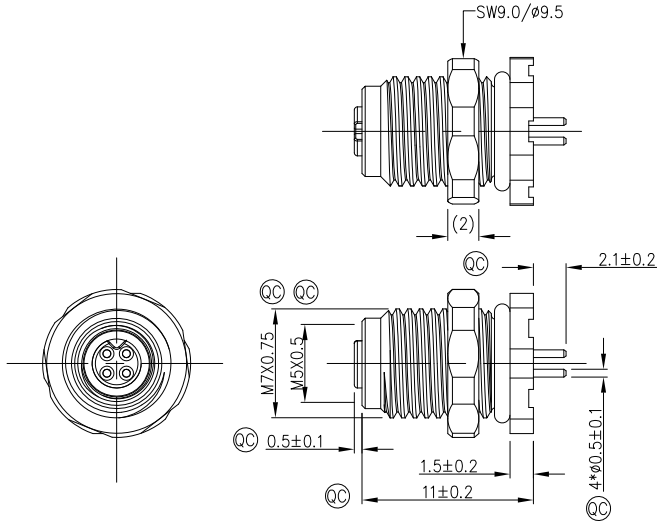
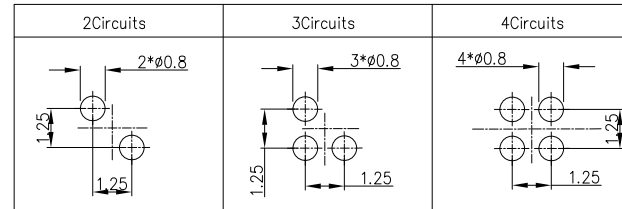
REV	LOCATIONS	DESCRIPTION	DATE	REVISER	APPD
0		New Release	6/June		FRANK



Recommended Panel Cut-Out

- Note:
- ① Important Dimension
 - Degree of protection: IP68
 - This product must meet IEC61076-2-105
 - This product must meet 2011/65/EU ROHS compliance.
 - Not note tolerances: ± 0.20
 - Use torque values 0.5Nm

Recommended PCB Layout



* Note: All Materials Meet The "RoHs" !

NO.	SPECIFICATION	DESCRIPTION			
6	terminal	Copper alloy, Ep Au			
5	O-ring	NBR black			
4	nut	M7X0.75			
3	shell	Copper alloy, Ep Ni			
2	O-ring	NBR black			
1	housing	M5X0.5 female housing			
Circuits	Rated Voltage	Rated impulse Voltage	Rated Current(40°C)	Contact resistance	Insulation resistance
4Circuits	60V	800V	1A	$\leq 5m\Omega$	$\geq 100M\Omega$
3Circuits	60V	800V	1A	$\leq 5m\Omega$	$\geq 100M\Omega$
2Circuits	60V	800V	1A	$\leq 5m\Omega$	$\geq 100M\Omega$

Connector locking system	M5X0.5 Screw
Wiring type	Through Hole
Degree of protection	IP68(in mated condition)
Mechanical operation	> 100 mating cycles
Upper temperature	105°C
Lower temperature	-40°C
Pollution degree	3
Overvoltage categorie	II
Material group	I
Material of contact	Copper alloy
Contact plating	Au
Material of contact body	PA
Sealing	NBR
Material of housing	Copper nickel plated

Ordering Information

FM5S T02 01 - A XX S 1 04 D 00
 1 2 3 4 5 6 7 8 9

1 Series Name FM5S-M5 Socket
 2 Mounting thread T02-M7X0.75
 3 Distinction No. 01
 4 Coded A-A CODED
 5 Circuits 02-2Circuits, 03-3Circuits, 04-4Circuits

6 Contact S-Socket
 7 Plating 1-Ep Au
 8 Thickness Plating 04-0.1μm
 9 Wiring type D-Through Hole

 THIRD ANGLE PROJECTION DESIGN UNITS Metric SCALE 2:1 SIZE A4	GENERAL TOLERANCES (UNLESS SPECIFIED)		APPROVE BY FRANK	DATE 13/July/23	PART NO. FM5ST0201-AXXS104D00	ITEM NO. FM5ST0201	 Building Technology Cornerstone
	X.±(0.30)	.X.±5'	CHECKED BY CHERRY	DATE 13/July/23	TITLE Front fastened M7x0.75 Female Socket [THR]		
	X.XX±(0.15)	.XX±1'	DRAWN BY DANIEL	DATE 13/July/23	THIS DRAWING CONTAINS INFORMATION THAT IS PROPRIETARY TO TXGA INDUSTRIAL ELECTRONICS(S,Z)CO.,LTD AND SHOULD NOT BE USED WITHOUT WRITTEN PERMISSION		REV 0 SHEET NO. 1/1
	X.XXX±(0.10)	.XXX±0.5'					