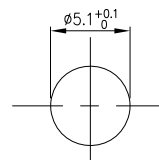
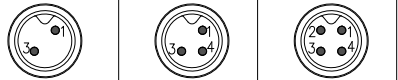
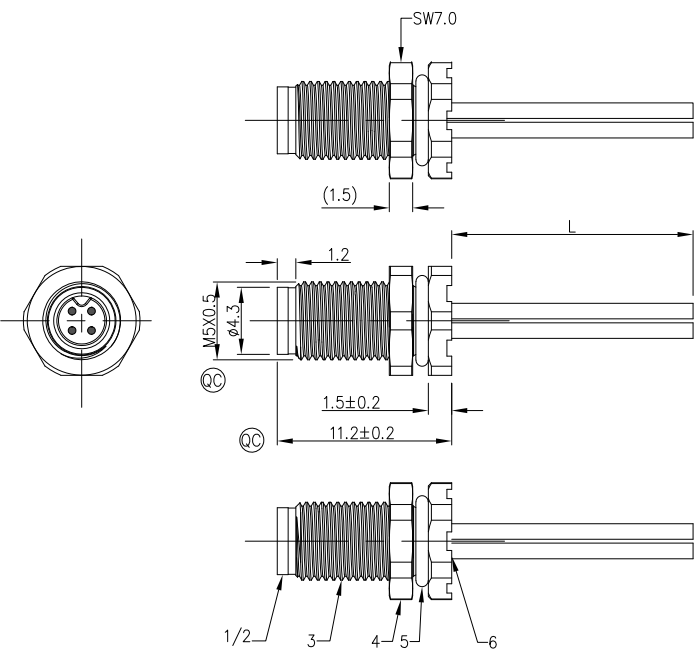


1	2	3	4	5	6	7	8			
Circuits Coded	2Circuits	3Circuits	4Circuits		REV	LOCATIONS	DESCRIPTION	DATE	REVISER	APPD
A-Coded					0		New Release	6/June		FRANK



Recommended Panel Cut-Out

- Note:
- @@ Important Dimension
  - Degree of protection: IP68
  - This product must meet IEC61076-2-105
  - This product must meet 2011/65/EU ROHS compliance.
  - Not note tolerances: ±0.20
  - Use torque values 0.5Nm



WIRING CHART

2Circuits	3Circuits	4Circuits
1 brown 3 blue	1 brown 3 blue 4 black	1 brown 2 white 3 blue 4 black

Dimensions L (mm)

Range(length)	50 to 200	201 to 1000	1001 to 5000	5000 to 9000
Tolerance(mm)	±10	±15	±25	±30

Ordering Information

FM5W T01 01 - A XX P 1 04 XXXX 00

1 2 3 4 5 6 7 8 9

1 Series Name FM5W-M5 Socket  
 2 Mounting thread T01-M5X0.5  
 3 Distinction No. 01  
 4 Coded A-A CODED  
 5 Circuits 02-2Circuits  
 03-3Circuits  
 04-4Circuits

6 Contact P-Pin  
 7 Plating 1-Ep Au  
 8 Thickness Plating 04-0.1µm  
 9 Length XXXX-(see table1)

TABLE 1

CABLE LENGTH (XXX)	0050	0100	0150	0200	.....	0990
	50mm	100mm	150mm	200mm	.....	990mm
	1000	1500	2000	3000	.....	9999
	1M	1.5M	2M	3M	.....	9.999M

\* Note: All Materials Meet The "RoHs" !

6	Lize	26AWG [0.14mm <sup>2</sup> ]	Connector locking system	M5X0.5 Screw			
5	O-ring	NBR black	Wiring type	Crimp			
4	nut	M5X0.5	Degree of protection	IP68(in mated condition)			
3	shell	Copper alloy,Ep Ni	Mechanical operation	> 100 mating cycles			
2	terminal	Copper alloy,Ep Au	Upper temperature	105°C			
1	housing	M5X0.5 male housing	Lower temperature	-40°C			
NO.	SPECIFICATION	DESCRIPTION	Pollution degree	3			
Circuits	Rated Voltage	Rated impulse Voltage	Rated Current(40°C)	Contact resistance	Insulation resistance	Overvoltage categorie	II
4Circuits	60V	800V	1A	≤5mΩ	≥100MΩ	Material group	I
3Circuits	60V	800V	1A	≤5mΩ	≥100MΩ	Material of contact	Copper alloy
2Circuits	60V	800V	1A	≤5mΩ	≥100MΩ	Contact plating	Au
						Material of contact body	PA
						Sealing	NBR
						Material of housing	Copper nickel plated

 THIRD ANGLE PROJECTION	GENERAL TOLERANCES (UNLESS SPECIFIED)		APPROVE BY	DATE	PART NO.	ITEM NO.	 Building Technology Cornerstone
	X.±(0.30)	.X.±5'	FRANK	13/July/23	FM5WT0101-AXXP104XXXX00	FM5WT0101	
DESIGN UNITS Metric	X.XX±(0.20)	.X'±2'	CHECKED BY	DATE	TITLE		THIS DRAWING CONTAINS INFORMATION THAT IS PROPRIETARY TO TXGA INDUSTRIAL ELECTRONICS(S,Z)CO.,LTD AND SHOULD NOT BE USED WITHOUT WRITTEN PERMISSION
	X.XX±(0.15)	.XX'±1'	CHERRY	13/July/23	Front fastened M5x0.5 Male Socket with lize,free end		
SCALE	SIZE	X.XXX±(0.10)	.XXX'±0.5'	DRAWN BY	DATE	REV 0	SHEET NO. 1/1
2:1	A4			DANIEL	13/July/23		