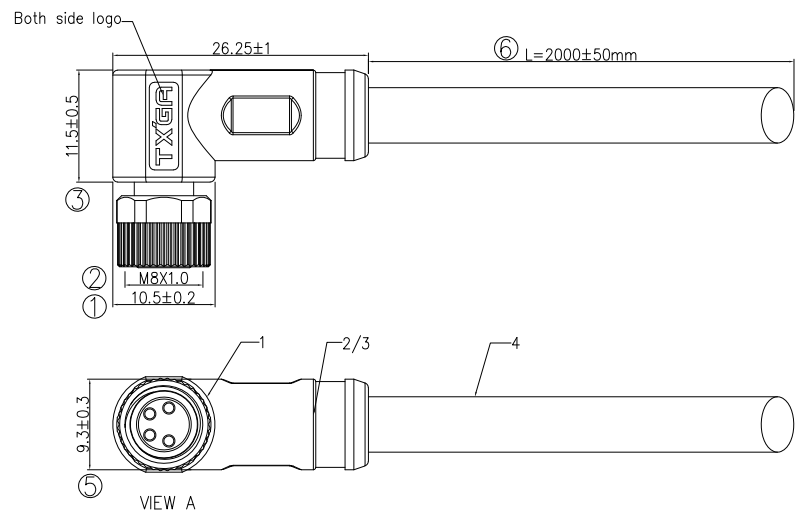
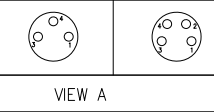
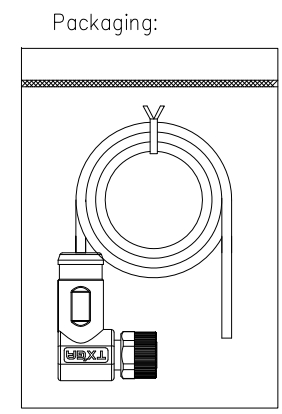


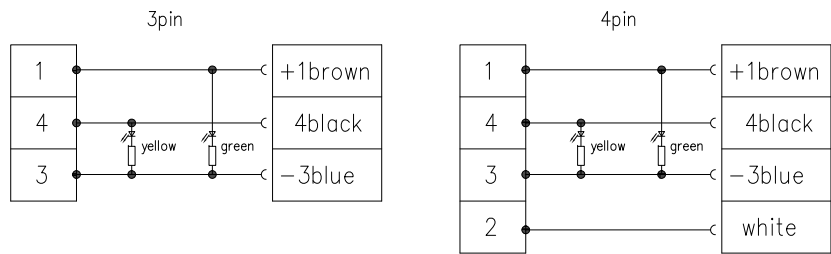
|         |           |           |   |   |     |           |             |        |         |       |
|---------|-----------|-----------|---|---|-----|-----------|-------------|--------|---------|-------|
| 1       | 2         | 3         | 4 | 5 | 6   | 7         | 8           |        |         |       |
| Coded   | 3circuits | 4circuits |   |   | REV | LOCATIONS | DESCRIPTION | DATE   | REVISER | APPD  |
| A-Coded |           |           |   |   | 0   |           | New Release | 13/Nov | LAM     | FRANK |



Note:  
 1. (⊗) Important Dimension  
 2. Waterproof Rate: IP65  
 3. This product must meet IEC61076-2-104  
 4. This product must meet 2011/65/EU ROHS compliance.  
 5. Not note tolerances: ±0.20



WIRING CHART(FEMALE Front View)



Ordering Information

FM8C 02 04 04 - X XX R XXXXX 00  
 1 2 3 4 5 6 7 8

1 Cable type FM8C-M8 Cable  
 2 Cable category 02-Female Right angle to open  
 3 Mounting thread 04-M8X1.0  
 4 Distinction num 04

5 Coded A-A CODED  
 6 Circuits 03-3Circuits 04-4Circuits  
 7 Angle-Key R-90°  
 8 Cable length XXXXX-(see table1)

TABLE 1

| L (XXXXX)         | 00050     | 00100      | 00150        | 00200        | ... | 00990 |
|-------------------|-----------|------------|--------------|--------------|-----|-------|
|                   | 50mm      | 100mm      | 150mm        | 200mm        | ... | 990mm |
|                   | 01000     | 01500      | 02000        | 10000        | ... | 99900 |
|                   | 1M        | 1.5M       | 2M           | 10M          | ... | 99.9M |
| Dimensions L (mm) |           |            |              |              |     |       |
| Range(length)     | 50 to 200 | 201 to 500 | 1001 to 5000 | 5000 to 9000 |     |       |
| Tolerance(mm)     | ±10       | ±15        | ±25          | ±30          |     |       |

| Cable product Information |           |               |                       |               |   |     |                                |
|---------------------------|-----------|---------------|-----------------------|---------------|---|-----|--------------------------------|
| Coded                     | Circuits  | Rated voltage | Rated impulse voltage | Rated current | Insulation resistance                   | O.D | Wire Size(mm <sup>2</sup> )AWG |
| A                         | 3Circuits | 60V           | 1500V                 | 4A            | ≥100MΩ                                  | 4.5 | 0.35mm <sup>2</sup> /22AWG     |
|                           | 4Circuits | 60V           | 1500V                 | 4A            | ≥100MΩ                                  | 4.8 | 0.35mm <sup>2</sup> /22AWG     |
| 4                         | Black     | 4             | Black                 | 4             | UL 2517 (3C/4C)22AWG, JACKET: BK, PVC   |     |                                |
| 3                         | Blue      | 3             | Blue                  | 3             | Overmold:PVC black 30P                  |     |                                |
| 2                         | White     | 2             | White                 | 2             | Innermold:PVC black 30P                 |     |                                |
| 1                         | Brown     | 1             | Brown                 | 1             | M8x1.0 A-Coded 3/4 circuits female plug |     |                                |

|  |                                       |  |            |  |   |            |
|--|---------------------------------------|--|------------|--|---|------------|
| <br>THIRD ANGLE PROJECTION<br>DESIGN UNITS Metric<br>SCALE 2:1 SIZE A4 | GENERAL TOLERANCES (UNLESS SPECIFIED) |  | APPROVE BY | DATE   | PART NO.  | ITEM NO.   |
|  | X.±0.30                               | .X'±5'   | FRANK      | 24/Aug/23  | FM8C020404-XXXRXXXXX00                                  | FM8C020404 |
|  | X.X±0.20                              | .X'±2'   | CHECKED BY | DATE   | TITLE   |            |
|  | X.XX±0.15                             | .XX'±1'  | CHERRY     | 24/Aug/23  | M8X1.0 CABLE RIGHT ANGLE SINGLE END FEMALE LED, PNP,PVC |            |
| X.XXX±0.10   | .XXX'±0.5'                            | DRAWN BY   | DATE       | THIS DRAWING CONTAINS INFORMATION THAT IS PROPRIETARY TO TXGA INDUSTRIAL ELECTRONICS(S.Z)CO.,LTD AND SHOULD NOT BE USED WITHOUT WRITTEN PERMISSION |   |            |
| LAM  | 24/Aug/23                             | <br>Building Technology Cornerstone<br>REV 0 SHEET NO. 1/1 |            |  |   |            |

|                                     |
|-------------------------------------|
| ELECTRICAL                          |
| 1. Withstanding Voltage:DC 300V     |
| 2. Conduction Impedance: 3Ω (Max)   |
| 3. Insulation Resistance: 10MΩ(Min) |