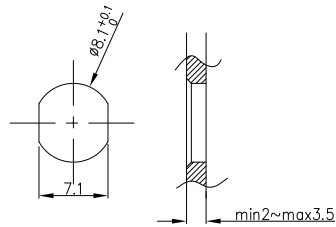


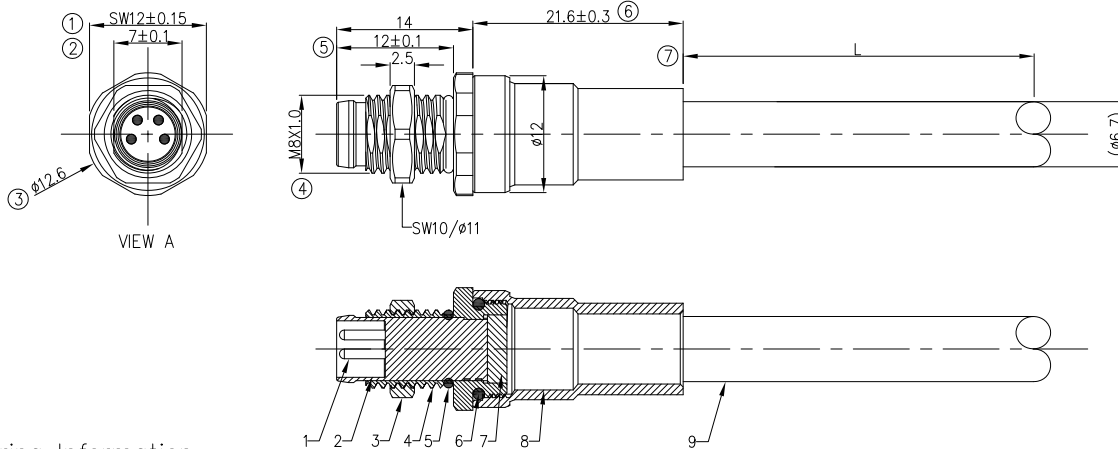
REV	LOCATIONS	DESCRIPTION	DATE	REVISER	APPD
0		New Release	13/Nov	LAM	FRANK



Recommended Panel Cut-Out

Note:

1. ⊛ Important Dimension
2. Waterproof Rate: IP68
3. This product must meet IEC61076-2-104
4. This product must meet 2011/65/EU ROHS compliance.
5. Not note tolerances: ±0.20



Ordering Information

FM8C 03 04 07 - A 04 E XXXXX 00

1 Cable type FM8C-M8 Cable	2 Cable category 03-Male Straight to open	3 Mounting thread 04-M8X1.0	4 Distinction num 07
5 Coded A-A CODED	6 Circuits 04-4Circuits	7 Angle-Key E-0°	8 Cable length XXXXX-(see table1)

TABLE 1

L (XXXXX)	00050	00100	00150	00200	...	00990
	50mm	100mm	150mm	200mm	...	990mm
	01000	01500	02000	10000	...	99900
	1M	1.5M	2M	10M	...	99.9M
Dimensions L (mm)						
Range(length)	50 to 200	201 to 500	1001 to 5000	5000 to 9000		
Tolerance(mm)	±10	±15	±25	±30		

4Circuits (A-Coded)	
Shell-Braid	
4	Black
3	Blue
2	White
1	Brown
Circuits	wire color

Cable product Information							
Coded	Circuits	Rated voltage	Rated impulse voltage	Rated current	Insulation resistance	O.D	Wire Size(mm ²)AWG
A	4Circuits	60V	1500V	4A	≥100MΩ	6.7	0.35mm ² /22AWG
9	UL 20549 4C*22AWG, JACKET:GN, PUR						
8	Shielde case,Ep Ni3						
7	Epoxy resin black						
6	Seal EPDM φ8*1.2						
5	Seal EPDM φ6*1.0						
4	Shell Ep Ni3						
3	M8X1.0 Nut Ep Ni3						
2	Housing:A-Coded 4PIN						
1	Male Pin:Brass Ep Au0.1						

<p>THIRD ANGLE PROJECTION</p>	GENERAL TOLERANCES (UNLESS SPECIFIED)		APPROVE BY	DATE	PART NO.	ITEM NO.	
	X.±0.30	.X'±5'	FRANK	24/Aug/23	FM8C030407-A04EXXXXX00	FM8C030407	
	DESIGN UNITS Metric		CHECKED BY	DATE	TITLE		<p>Building Technology Cornerstone</p>
	X.XX±0.20	.X'±2'	CHERRY	24/Aug/23	M8X1.0 CABLE STRAIGHT SINGLE END MALE SIDE With SHIELDED(Ethernet)		
SCALE	SIZE	X.XX±0.15	.XX'±1'	DRAWN BY	DATE	THIS DRAWING CONTAINS INFORMATION THAT IS PROPRIETARY TO TXGA INDUSTRIAL ELECTRONICS(S,Z)CO.,LTD AND SHOULD NOT BE USED WITHOUT WRITTEN PERMISSION	
2:1	A4	X.XXX±0.10	.XXX'±0.5'	LAM	24/Aug/23	REV 0 SHEET NO. 1/1	

ELECTRICAL
1. Withstanding Voltage:DC 300V
2. Conduction Impedance: 3Ω (Max)
3. Insulation Resistance: 10MΩ(Min)