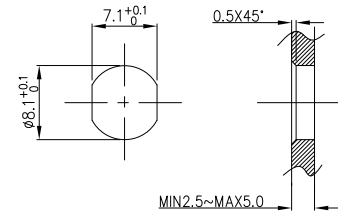
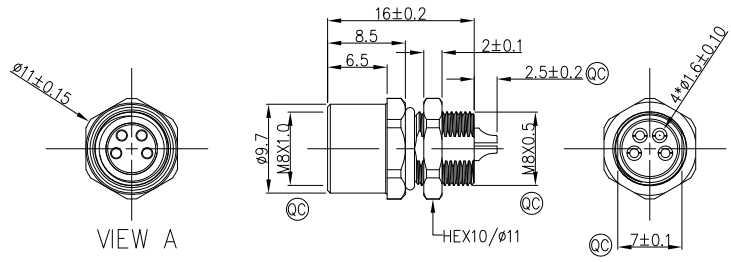


1	2	3	4	5	6	7	8				
Circuits	2Circuits	3Circuits	4Circuits	Circuits	5Circuits	REV	LOCATIONS	DESCRIPTION	DATE	REVISER	APPD
A-Coded				B-Coded		0		New Release	4/DEC	LAM	FRANK
FRONT VIEW A											

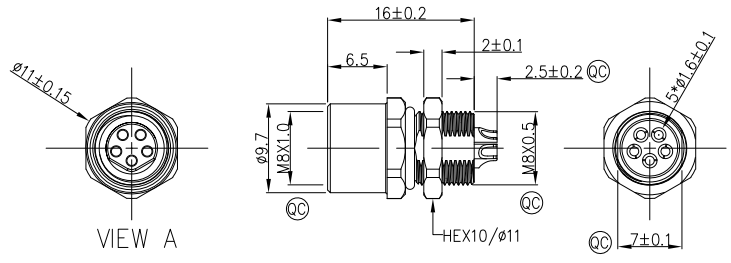


Note:
 1. Ⓞ Important Dimension
 2. Waterproof Rate: IP68
 3. This product must meet IEC61076-2-104
 4. This product must meet 2011/65/EU ROHS compliance.
 5. Not note tolerances: ±0.20
 6. Use torque values 1Nm

Recommended Panel Cut-Out



VIEW A



VIEW A

Connector locking system	Screw
Wiring type	Solder
Degree of protection	IP68(in mated condition)
Mechanical operation	> 100 mating cycles
Upper temperature	105°C
Lower temperature	-40°C
Pollution degree	3
Overvoltage categorie	II
Material group	II
Material of contact	CuZn (Messing/brass)
Contact plating	Au
Material of contact body	PA
Sealing	EPDM
Material of housing	Brass nickel plated

Ordering Information

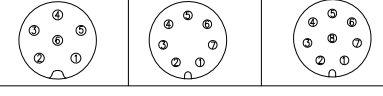
FM8S 1 R03 2 18 3 - X 4 XX 5 S 6 1 7 04 8 W 9 00

1 Series Name FM8S-M8 Socket	2 Mounting thread R03-rear fastened M8X0.5	3 Distinction No. 18	4 Coded A-A CODED B-B CODED	5 Circuits 02-2Circuits 03-3Circuits 04-4Circuits 05-5Circuits 06-6Circuits 07-7Circuits 08-8Circuits	6 Contact S-Socket
7 Plating 1-Ep Au	8 Thickness Plating 04-0.1μm	9 Wire type W-welding			

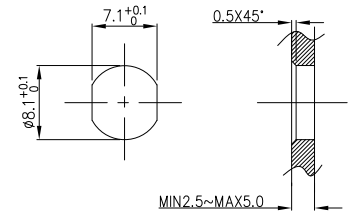
Pin Assignments Front View	Rated Voltage	Rated impulse Voltage	Rated Current (40°C)	Contact resistance	Insulation resistance
	60V DC	1500V	4A	≤3mΩ	≥100MΩ
	60V DC	1500V	4A	≤3mΩ	≥100MΩ
	60V DC	1500V	4A	≤3mΩ	≥100MΩ
	60V DC	1500V	4A	≤3mΩ	≥100MΩ

THIRD ANGLE PROJECTION	GENERAL TOLERANCES (UNLESS SPECIFIED)		APPROVE BY FRANK	DATE 4/DEC/23	PART NO. FM8SR0318-XXS104W00	ITEM NO. FM8SR0318	TXGA Building Technology Cornerstone
	X.±0.30	X.±5°	CHECKED BY CHERRY	DATE 4/DEC/23	TITLE M8X1.0 female socket rear fastened M8X0.5 Solder terminal 【Double section】		
DESIGN UNITS Metric	X.X±0.20	.X'±2°	DRAWN BY LAM	DATE 4/DEC/23	THIS DRAWING CONTAINS INFORMATION THAT IS PROPRIETARY TO TXGA INDUSTRIAL ELECTRONICS(S,Z)CO.,LTD AND SHOULD NOT BE USED WITHOUT WRITTEN PERMISSION		
SCALE 2:1	SIZE A4	X.XX±0.15	.XX'±1°		REV 0	SHEET NO. 1/2	
		X.XXX±0.10	.XXX'±0.5°				

1	2	3	4	5	6	7	8		
Circuits	6Circuits	7Circuits	8Circuits	REV	LOCATIONS	DESCRIPTION	DATE	REVISER	APPD
A-Coded				0		New Release	4/DEC	LAM	FRANK

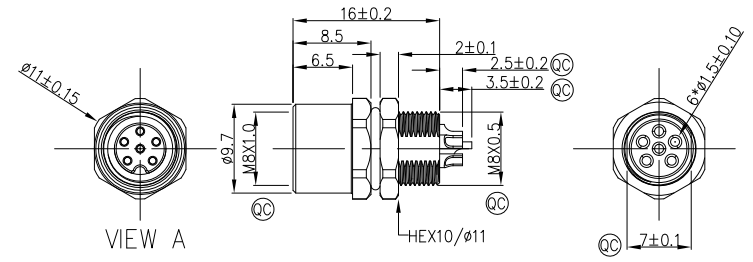


FRONT VIEW A

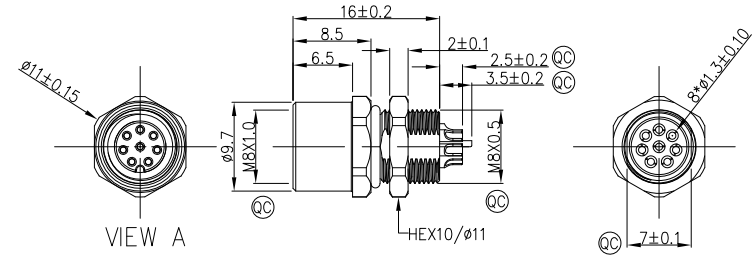


Recommended Panel Cut-Out

- Note:
- ① Important Dimension
 - Waterproof Rate: IP68
 - This product must meet IEC61076-2-104
 - This product must meet 2011/65/EU ROHS compliance.
 - Not note tolerances: ±0.20
 - Use torque values 1Nm



VIEW A



VIEW A

Connector locking system	Screw
Wiring type	Solder
Degree of protection	IP68(in mated condition)
Mechanical operation	> 100 mating cycles
Upper temperature	105°C
Lower temperature	-40°C
Pollution degree	3
Overvoltage categorie	II
Material group	II
Material of contact	CuZn (Messing/brass)
Contact plating	Au
Material of contact body	PA
Sealing	EPDM
Material of housing	Brass nickel plated

Ordering Information

FM8S R03 18 - X XX S 1 04 W 00

- | | | | | | |
|---------------------------------|--|--------------------------|-----------------------------------|--|-----------------------|
| 1 Series Name
FM8S-M8 Socket | 2 Mounting thread
R03-rear fastened
M8X0.5 | 3 Distinction No.
18 | 4 Coded
A-A CODED
B-B CODED | 5 Circuits
02-2Circuits
03-3Circuits
04-4Circuits
05-5Circuits
06-6Circuits
07-7Circuits
08-8Circuits | 6 Contact
S-socket |
| 7 Plating
1-Ep Au | 8 Thickness Plating
04-0.1μm | 9 Wire type
W-welding | | | |

Pin Assignments Front View	Rated Voltage	Rated impulse Voltage	Rated Current (40°C)	Contact resistance	Insulation resistance
	30V DC	800V	1.5A	≤3mΩ	≥100MΩ
	30V DC	800V	1.5A	≤3mΩ	≥100MΩ
	30V DC	800V	1.5A	≤3mΩ	≥100MΩ

THIRD ANGLE PROJECTION	GENERAL TOLERANCES (UNLESS SPECIFIED)		APPROVE BY FRANK	DATE 4/DEC/23	PART NO. FM8SR0318-XXXS104W00	ITEM NO. FM8SR0318	TXGA Building Technology Cornerstone
	DESIGN UNITS Metric	X.±0.30	X.±5°	CHECKED BY CHERRY	DATE 4/DEC/23	TITLE M8X1.0 female socket front fastened M8X0.5 Solder terminal 【Double section】	
SCALE 2:1	SIZE A4	X.XX±0.15	.XX±1°	DRAWN BY LAM	DATE 4/DEC/23	THIS DRAWING CONTAINS INFORMATION THAT IS PROPRIETARY TO TXGA INDUSTRIAL ELECTRONICS(S,Z)CO.,LTD AND SHOULD NOT BE USED WITHOUT WRITTEN PERMISSION	