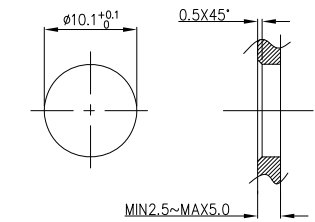
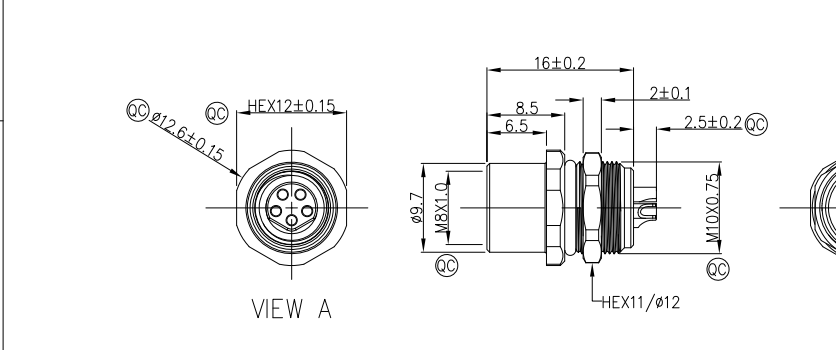
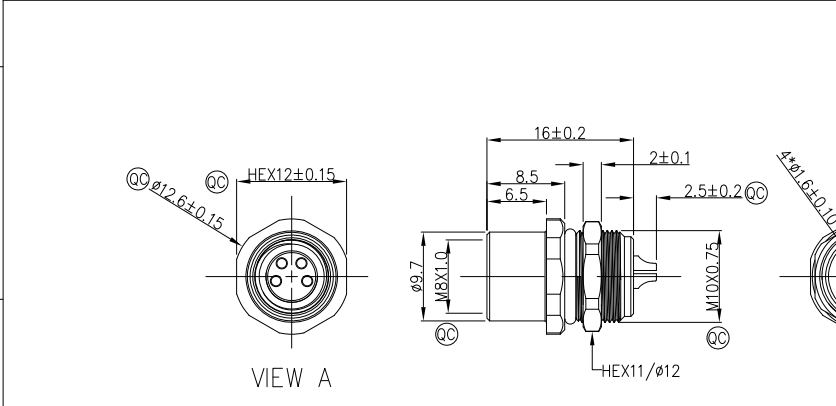


1	2	3	4	5	6	7	8				
Circuits	2Circuits	3Circuits	4Circuits	Circuits	5Circuits	REV	LOCATIONS	DESCRIPTION	DATE	REVISER	APPD
A-Coded				B-Coded		0		New Release	4/DEC	LAM	FRANK

FRONT VIEW A



Recommended Panel Cut-Out

- Note:
- ① Important Dimension
 - Waterproof Rate: IP68
 - This product must meet IEC61076-2-104
 - This product must meet 2011/65/EU ROHS compliance.
 - Not note tolerances: ±0.20
 - Use torque values 1Nm

Connector locking system	Screw
Wiring type	Solder
Degree of protection	IP68(in mated condition)
Mechanical operation	> 100 mating cycles
Upper temperature	105°C
Lower temperature	-40°C
Pollution degree	3
Overvoltage categorie	II
Material group	II
Material of contact	CuZn (Messing/brass)
Contact plating	Au
Material of contact body	PA
Sealing	EPDM
Material of housing	Brass nickel plated

Ordering Information

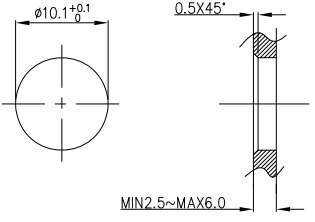
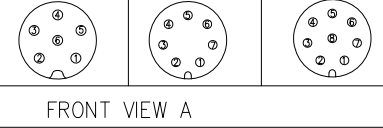
FM8S 1 R05 2 17 3 - X 4 XX 5 S 6 1 7 04 8 W 9 00

- | | | | | | |
|---------------------------------|--|--------------------------|-----------------------------------|--|-----------------------|
| 1 Series Name
FM8S-M8 Socket | 2 Mounting thread
R05-rear fastened
M10X0.75 | 3 Distinction No.
17 | 4 Coded
A-A CODED
B-B CODED | 5 Circuits
02-2Circuits
03-3Circuits
04-4Circuits
05-5Circuits
06-6Circuits
07-7Circuits
08-8Circuits | 6 Contact
S-socket |
| 7 Plating
1-Ep Au | 8 Thickness Plating
04-0.1µm | 9 Wire type
W-welding | | | |

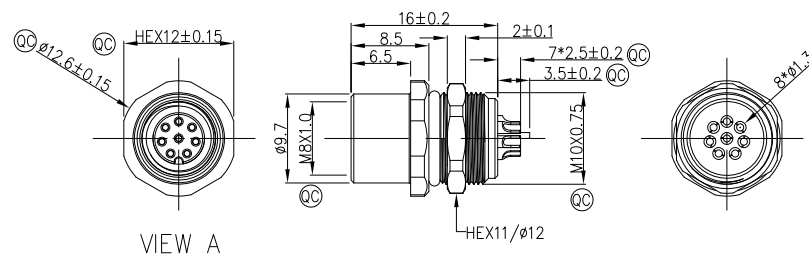
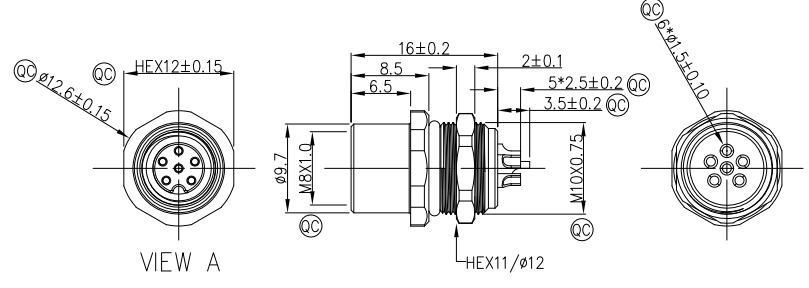
Pin Assignments Front View	Rated Voltage	Rated impulse Voltage	Rated Current (40°C)	Contact resistance	Insulation resistance
	60V DC	1500V	4A	≤3mΩ	≥100MΩ
	60V DC	1500V	4A	≤3mΩ	≥100MΩ
	60V DC	1500V	4A	≤3mΩ	≥100MΩ
	60V DC	1500V	4A	≤3mΩ	≥100MΩ

THIRD ANGLE PROJECTION	GENERAL TOLERANCES (UNLESS SPECIFIED)		APPROVE BY FRANK	DATE 4/DEC/23	PART NO. FM8SR0517-XXS104W00	ITEM NO. FM8SR0517	
	DESIGN UNITS Metric	X.±0.30	X.±5°	CHECKED BY CHERRY	DATE 4/DEC/23	TITLE M8X1.0 female socket rear fastened M10X0.75 Solder terminal [Circle]	
SCALE 2:1	SIZE A4	X.XX±0.15	.XX±1°	DRAWN BY LAM	DATE 4/DEC/23	THIS DRAWING CONTAINS INFORMATION THAT IS PROPRIETARY TO TXGA INDUSTRIAL ELECTRONICS(S.Z)CO.,LTD AND SHOULD NOT BE USED WITHOUT WRITTEN PERMISSION	
		X.XXX±0.10	.XXX±0.5°			REV 0	SHEET NO. 1/2

1	2	3	4	5	6	7	8			
Circuits	6Circuits	7Circuits	8Circuits		REV	LOCATIONS	DESCRIPTION	DATE	REVISER	APPD
A-Coded					0		New Release	4/DEC	LAM	FRANK



Note:
 1. Ⓞ Important Dimension
 2. Waterproof Rate: IP68
 3. This product must meet IEC61076-2-104
 4. This product must meet 2011/65/EU ROHS compliance.
 5. Not note tolerances: ± 0.20
 6. Use torque values 1Nm



Connector locking system	Screw
Wiring type	Solder
Degree of protection	IP68(in mated condition)
Mechanical operation	> 100 mating cycles
Upper temperature	105°C
Lower temperature	-40°C
Pollution degree	3
Overvoltage categorie	II
Material group	II
Material of contact	CuZn (Messing/brass)
Contact plating	Au
Material of contact body	PA
Sealing	EPDM
Material of housing	Brass nickel plated

Ordering Information

FM8S 1 R05 2 17 3 - X 4 XX 5 S 6 1 7 04 8 W 9 00

- 1 Series Name - FM8S-M8 Socket
- 2 Mounting thread - R05-rear fastened M10X0.75
- 3 Distinction No. - 17
- 4 Coded - A-A CODED B-B CODED
- 5 Circuits - 02-2Circuits 03-3Circuits 04-4Circuits 05-5Circuits 06-6Circuits 07-7Circuits 08-8Circuits
- 6 Contact - S-socket
- 7 Plating - 1-Ep Au
- 8 Thickness Plating - 04-0.1μm
- 9 Wire type - W-welding

Pin Assignments Front View	Rated Voltage	Rated impulse Voltage	Rated Current (40°C)	Contact resistance	Insulation resistance
	30V DC	800V	1.5A	≤3mΩ	≥100MΩ
	30V DC	800V	1.5A	≤3mΩ	≥100MΩ
	30V DC	800V	1.5A	≤3mΩ	≥100MΩ

THIRD ANGLE PROJECTION	GENERAL TOLERANCES (UNLESS SPECIFIED)		APPROVE BY	DATE	PART NO.	ITEM NO.	
	X.±0.30	.X.±5'	FRANK	4/DEC/23			
DESIGN UNITS Metric	X.X±0.20	.X'±2'	CHECKED BY	DATE	TITLE	REV 0	SHEET NO. 2/2
	X.XX±0.15	.XX'±1'	CHERRY	4/DEC/23			
SCALE 2:1	SIZE A4	X.XXX±0.10	.XXX'±0.5'	DRAWN BY LAM	DATE 4/DEC/23	THIS DRAWING CONTAINS INFORMATION THAT IS PROPRIETARY TO TXGA INDUSTRIAL ELECTRONICS(S,Z)CO.,LTD AND SHOULD NOT BE USED WITHOUT WRITTEN PERMISSION	