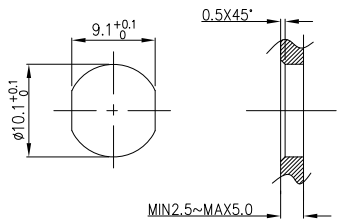
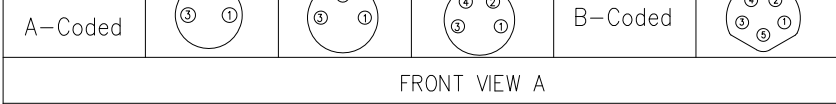
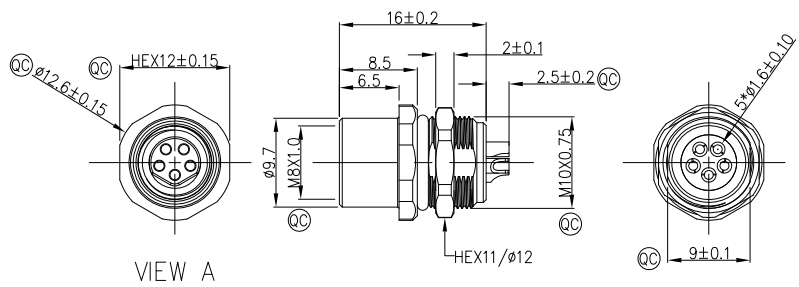
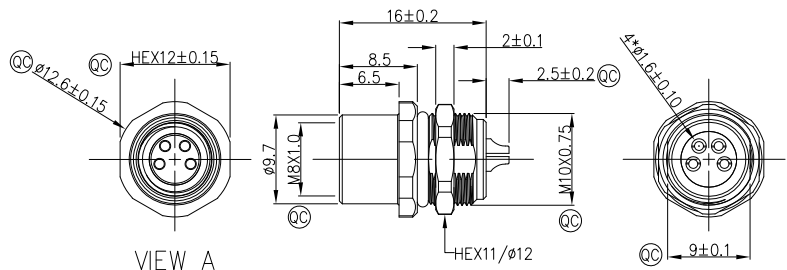


1	2	3	4	5	6	7	8				
Circuits	2Circuits	3Circuits	4Circuits	Circuits	5Circuits	REV	LOCATIONS	DESCRIPTION	DATE	REVISER	APPD
A-Coded				B-Coded		0		New Release	4/DEC	LAM	FRANK



Note:  
 1. Ⓞ Important Dimension  
 2. Waterproof Rate: IP68  
 3. This product must meet IEC61076-2-104  
 4. This product must meet 2011/65/EU ROHS compliance.  
 5. Not note tolerances: ±0.20  
 6. Use torque values 1Nm

Recommended Panel Cut-Out



Connector locking system	Screw
Wiring type	Solder
Degree of protection	IP68(in mated condition)
Mechanical operation	> 100 mating cycles
Upper temperature	105°C
Lower temperature	-40°C
Pollution degree	3
Overvoltage categorie	II
Material group	II
Material of contact	CuZn (Messing/brass)
Contact plating	Au
Material of contact body	PA
Sealing	EPDM
Material of housing	Brass nickel plated

Ordering Information

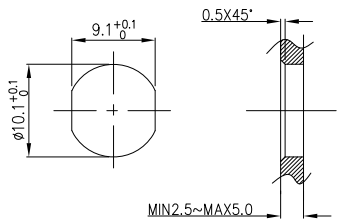
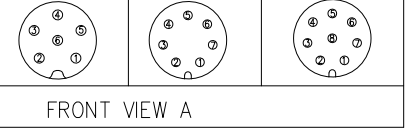
FM8S 1 R05 2 18 3 - X 4 XX 5 S 6 1 7 04 8 W 9 00

1 Series Name FM8S-M8 Socket	2 Mounting thread R05-rear fastened M10X0.75	3 Distinction No. 18	4 Coded A-A CODED B-B CODED	5 Circuits 02-2Circuits 03-3Circuits 04-4Circuits 05-5Circuits 06-6Circuits 07-7Circuits 08-8Circuits	6 Contact S-Socket
7 Plating 1-Ep Au	8 Thickness Plating 04-0.1μm	9 Wire type W-welding			

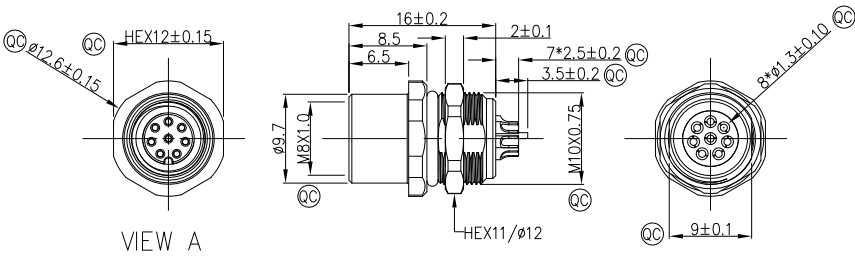
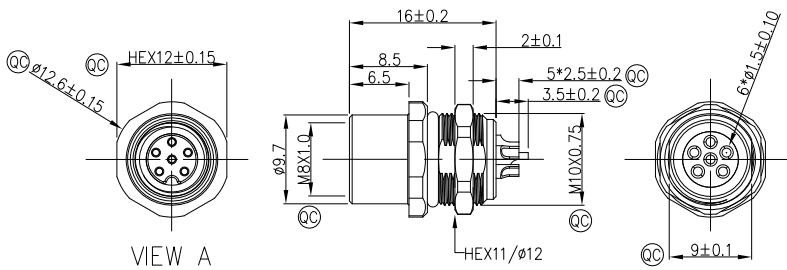
Pin Assignments Front View	Rated Voltage	Rated impulse Voltage	Rated Current (40°C)	Contact resistance	Insulation resistance
	60V DC	1500V	4A	≤3mΩ	≥100MΩ
	60V DC	1500V	4A	≤3mΩ	≥100MΩ
	60V DC	1500V	4A	≤3mΩ	≥100MΩ
	60V DC	1500V	4A	≤3mΩ	≥100MΩ

THIRD ANGLE PROJECTION	GENERAL TOLERANCES (UNLESS SPECIFIED)		APPROVE BY FRANK	DATE 4/DEC/23	PART NO. FM8SR0518-XXSX104W00	ITEM NO. FM8SR0518	<b>TXGA</b> Building Technology Cornerstone
	DESIGN UNITS Metric	X.±0.30	X.±5°	CHECKED BY CHERRY	DATE 4/DEC/23	TITLE M8X1.0 female socket rear fastened M10X0.75 Solder terminal [double section]	
SCALE 2:1	SIZE A4	X.XX±0.15	.XX±1°	DRAWN BY LAM	DATE 4/DEC/23	THIS DRAWING CONTAINS INFORMATION THAT IS PROPRIETARY TO TXGA INDUSTRIAL ELECTRONICS(S,Z)CO.,LTD AND SHOULD NOT BE USED WITHOUT WRITTEN PERMISSION	
						REV 0	SHEET NO. 1/2

1	2	3	4	5	6	7	8			
Circuits	6Circuits	7Circuits	8Circuits		REV	LOCATIONS	DESCRIPTION	DATE	REVISER	APPD
A-Coded					0		New Release	4/DEC	LAM	FRANK



- Note:
- ① Important Dimension
  - Waterproof Rate: IP68
  - This product must meet IEC61076-2-104
  - This product must meet 2011/65/EU ROHS compliance.
  - Not note tolerances: ±0.20
  - Use torque values 1Nm



Connector locking system	Screw
Wiring type	Solder
Degree of protection	IP68(in mated condition)
Mechanical operation	> 100 mating cycles
Upper temperature	105°C
Lower temperature	-40°C
Pollution degree	3
Overvoltage categorie	II
Material group	II
Material of contact	CuZn (Messing/brass)
Contact plating	Au
Material of contact body	PA
Sealing	EPDM
Material of housing	Brass nickel plated

Ordering Information

FM8S R05 18 - X XX S 1 04 W 00  
 1 2 3 4 5 6 7 8 9

- |                                 |  |                          |                                   |  |                       |
|---------------------------------|--|--------------------------|-----------------------------------|--|-----------------------|
| 1 Series Name<br>FM8S-M8 Socket | 2 Mounting thread<br>R05-rear fastened<br>M10X0.75 | 3 Distinction No.<br>18  | 4 Coded<br>A-A CODED<br>B-B CODED | 5 Circuits<br>02-2Circuits<br>03-3Circuits<br>04-4Circuits<br>05-5Circuits<br>06-6Circuits<br>07-7Circuits<br>08-8Circuits | 6 Contact<br>S-Socket |
| 7 Plating<br>1-Ep Au            | 8 Thickness Plating<br>04-0.1μm                    | 9 Wire type<br>W-welding |                                   |  |                       |

Pin Assignments Front View	Rated Voltage	Rated impulse Voltage	Rated Currnt (40°C)	Contact resistance	Insulation resistance
	30V DC	800V	1.5A	≤3mΩ	≥100MΩ
	30V DC	800V	1.5A	≤3mΩ	≥100MΩ
	30V DC	800V	1.5A	≤3mΩ	≥100MΩ

THIRD ANGLE PROJECTION	GENERAL TOLERANCES (UNLESS SPECIFIED)		APPROVE BY FRANK	DATE 4/DEC/23	PART NO. FM8SR0518-XXXS104W00	ITEM NO. FM8SR0518	<b>TXGA</b> Building Technology Cornerstone
	DESIGN UNITS Metric	X.±0.30	X.±5°	CHECKED BY CHERRY	DATE 4/DEC/23	TITLE M8X1.0 female socket rear fastened M10X0.75 Solder terminal【double section】	
SCALE 2:1	SIZE A4	X.XX±0.15	.XX±1°	DRAWN BY LAM	DATE 4/DEC/23	THIS DRAWING CONTAINS INFORMATION THAT IS PROPRIETARY TO TXGA INDUSTRIAL ELECTRONICS(S,Z)CO.,LTD AND SHOULD NOT BE USED WITHOUT WRITTEN PERMISSION	
		X.XXX±0.10	.XXX±0.5°			REV 0	SHEET NO. 2/2