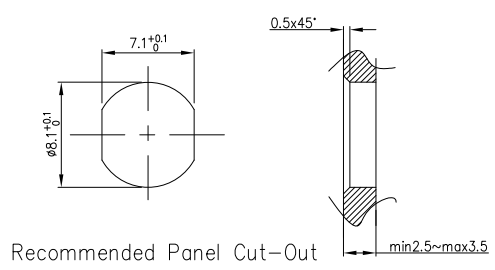
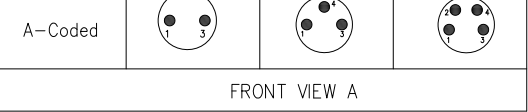
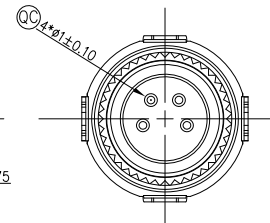
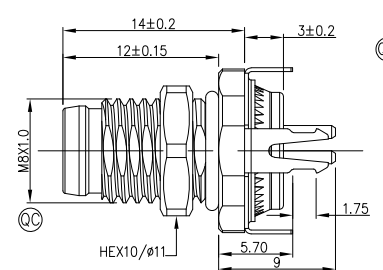
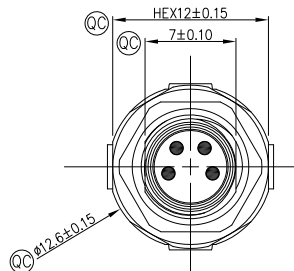
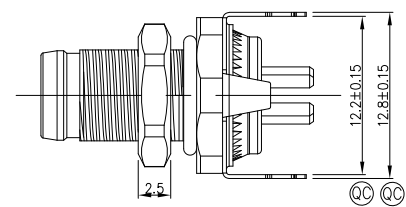


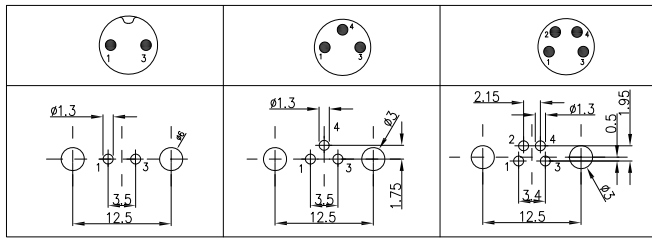
1	2	3	4	5	6	7	8			
circuits	2circuits	3circuits	4circuits		REV	LOCATIONS	DESCRIPTION	DATE	REVISER	APPD
A-Coded					0		New Release	11/DEC	LAM	FRANK



Note:  
 1. Ⓞ Important Dimension  
 2. Degree of protection: IP68  
 3. This product must meet IEC61076-2-104  
 4. This product must meet 2011/65/EU ROHS compliance.  
 5. Not note tolerances: ±0.20  
 6. Use torque values 1.0Nm



PCB Layout Thickness of PCB: <1.6mm 【Front view A】



Connector locking system	M8X1.0 Screw
Wiring type	Through Hole
Degree of protection	IP68(in mated condition)
Mechanical operation	> 100 mating cycles
Upper temperature	105°C
Lower temperature	-40°C
Pollution degree	3
Overvoltage categorie	II
Material group	II
Material of contact	Copper alloy
Contact plating	Au
Material of contact body	PA
Sealing	EPDM
Material of housing	Copper nickel plated

### Ordering Information

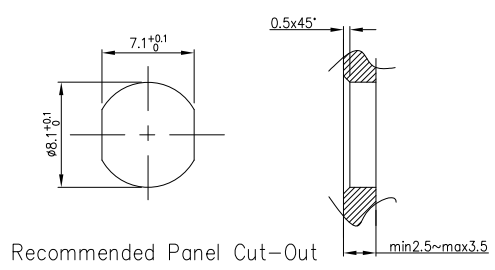
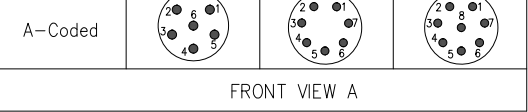
FM8S T04 01 - X XX P 1 04 D 00  
 1 2 3 4 5 6 7 8 9

1 Series Name FM8S-M8 Socket	2 Mounting thread T04-Front fastened M8X1.0	3 Distinction No. 01	4 Coded A-A CODED B-B CODED D-D CODED	5 Circuits 02-2Circuits 03-3Circuits 04-4Circuits 05-5Circuits 06-6Circuits 07-7Circuits 08-8Circuits
6 Contact P-Pin	7 Plating 1-Ep Au	8 Thickness Plating 04-0.1μm	9 Wire type D-Through Hole	

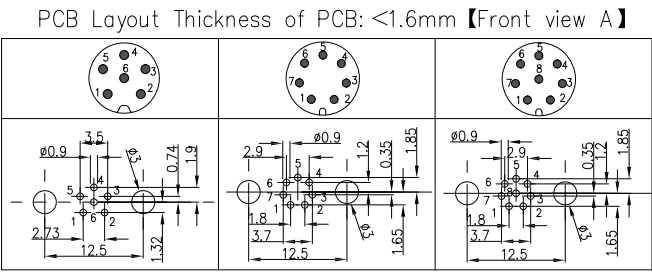
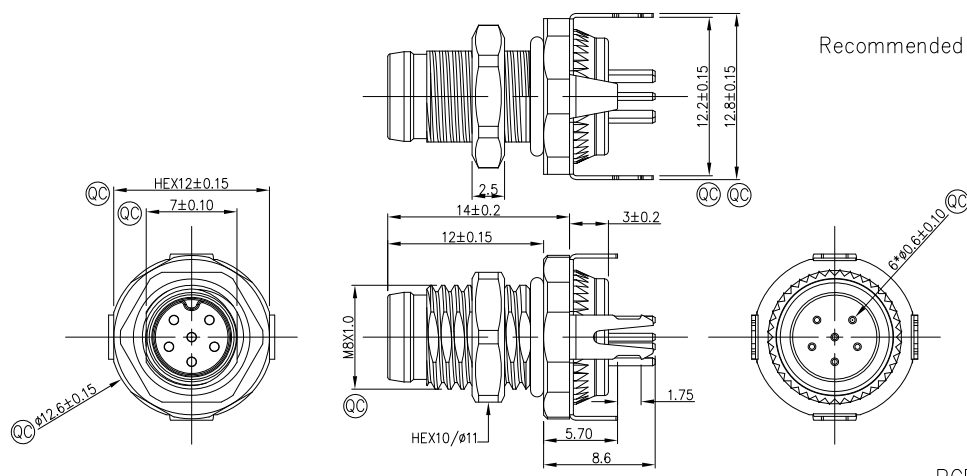
Pin Assignments Front View	Rated Voltage	Rated impulse Voltage	Rated Currnt (40°C)	Contact resistance	Insulation resistance
	60V DC	1500V	4A	≤3mΩ	≥100MΩ
	60V DC	1500V	4A	≤3mΩ	≥100MΩ
	60V DC	1500V	4A	≤3mΩ	≥100MΩ

 THIRD ANGLE PROJECTION DESIGN UNITS Metric SCALE 2:1 SIZE A4	GENERAL TOLERANCES (UNLESS SPECIFIED)		APPROVE BY FRANK	DATE 13/Dec/23	PART NO. FM8ST0401-XXXP104D00	ITEM NO. FM8ST0401	 Building Technology Cornerstone REV 0 SHEET NO. 1/3
	X.±0.30	.X'±5'	CHECKED BY CHERRY	DATE 13/Dec/23	TITLE Front fastened M8x1.0 Male Socket 180° THIT 【double section】with shield		
	X.XX±0.15	.XX'±1'	DRAWN BY LAM	DATE 13/Dec/23	THIS DRAWING CONTAINS INFORMATION THAT IS PROPRIETARY TO TXGA INDUSTRIAL ELECTRONICS(S,Z)CO.,LTD AND SHOULD NOT BE USED WITHOUT WRITTEN PERMISSION		

1	2	3	4	5	6	7	8			
circuits	6circuits	7circuits	8circuits		REV	LOCATIONS	DESCRIPTION	DATE	REVISER	APPD
A-Coded					0		New Release	11/DEC	LAM	FRANK



Note:  
 1. Ⓞ Important Dimension  
 2. Degree of protection: IP68  
 3. This product must meet IEC61076-2-104  
 4. This product must meet 2011/65/EU ROHS compliance.  
 5. Not note tolerances: ±0.20  
 6. Use torque values 1.0Nm



Connector locking system	M8X1.0 Screw
Wiring type	Through Hole
Degree of protection	IP68(in mated condition)
Mechanical operation	> 100 mating cycles
Upper temperature	105°C
Lower temperature	-40°C
Pollution degree	3
Overvoltage categorie	II
Material group	II
Material of contact	Copper alloy
Contact plating	Au
Material of contact body	PA
Sealing	EPDM
Material of housing	Copper nickel plated

### Ordering Information

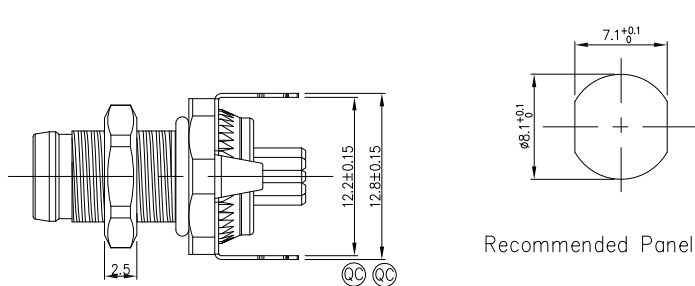
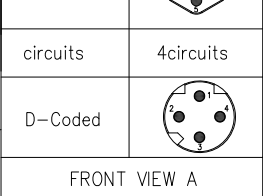
FM8S T04 01 - X XX P 1 04 D 00  
 1 2 3 4 5 6 7 8 9

1 Series Name FM8S-M8 Socket	2 Mounting thread T04-Front fastened M8X1.0	3 Distinction No. 01	4 Coded A-A CODED B-B CODED D-D CODED	5 Circuits 02-2Circuits 03-3Circuits 04-4Circuits 05-5Circuits 06-6Circuits 07-7Circuits 08-8Circuits
6 Contact P-Pin	7 Plating 1-Ep Au	8 Thickness Plating 04-0.1μm	9 Wire type D-Through Hole	

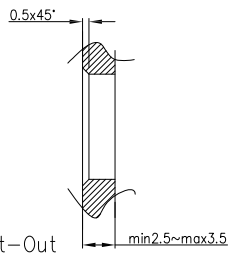
Pin Assignments Front View	Rated Voltage	Rated impulse Voltage	Rated Currnt (40°C)	Contact resistance	Insulation resistance
	30V DC	800V	1.5A	≤3mΩ	≥100MΩ
	30V DC	800V	1.5A	≤3mΩ	≥100MΩ
	30V DC	800V	1.5A	≤3mΩ	≥100MΩ

 THIRD ANGLE PROJECTION DESIGN UNITS Metric SCALE 2:1 SIZE A4	GENERAL TOLERANCES (UNLESS SPECIFIED)		APPROVE BY FRANK	DATE 13/Dec/23	PART NO. FM8ST0401-XXXP104D00	ITEM NO. FM8ST0401	 Building Technology Cornerstone REV 0 SHEET NO. 2/3
	X.±0.30	.X'±5'	CHECKED BY CHERRY	DATE 13/Dec/23	TITLE Front fastened M8x1.0 Male Socket 180° THIT 【double section】with shield		
	X.XX±0.15	.XX'±1'	DRAWN BY LAM	DATE 13/Dec/23	THIS DRAWING CONTAINS INFORMATION THAT IS PROPRIETARY TO TXGA INDUSTRIAL ELECTRONICS(S,Z)CO.,LTD AND SHOULD NOT BE USED WITHOUT WRITTEN PERMISSION		

circuits	5circuits	REV	LOCATIONS	DESCRIPTION	DATE	REVISER	APPD
B-Coded		0		New Release	11/DEC	LAM	FRANK
circuits	4circuits						
D-Coded							



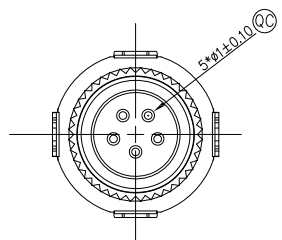
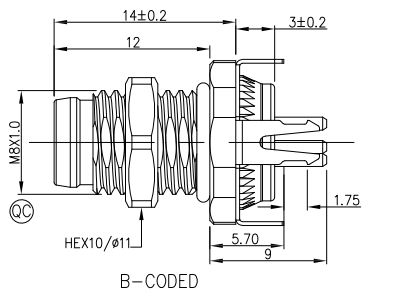
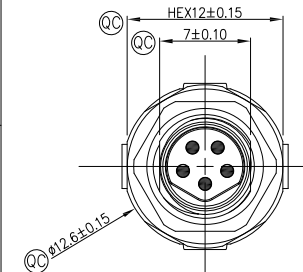
Recommended Panel Cut-Out



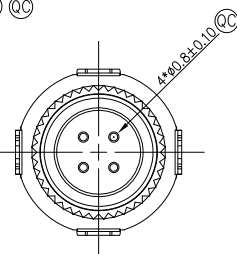
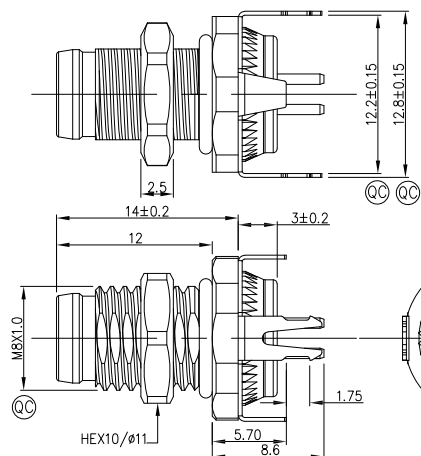
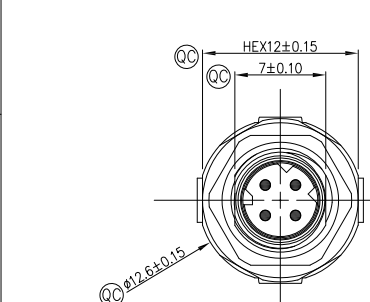
- Note:
- ◎ Important Dimension
  - Degree of protection: IP68
  - This product must meet IEC61076-2-104
  - This product must meet 2011/65/EU ROHS compliance.
  - Not note tolerances: ±0.20
  - Use torque values 1.0Nm

### Ordering Information

FM8S	T04	01	-	X	XX	P	1	04	D	00
1	2	3	4	5	6	7	8	9		
1 Series Name	2 Mounting thread	3 Distinction No.	4 Coded	5 Circuits						
FM8S-M8 Socket	T04-Front fastened	01	A-A CODED B-B CODED D-D CODED	02-2Circuits 03-3Circuits 04-4Circuits 05-5Circuits 06-6Circuits 07-7Circuits 08-8Circuits						
6 Contact	7 Plating	8 Thickness Plating	9 Wire type							
P-Pin	1-Ep Au	04-0.1µm	D-Through Hole							

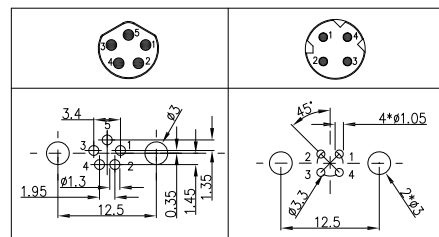


B-CODED



D-CODED

PCB Layout Thickness of PCB: <1.6mm 【Front view A】



Pin Assignments Front View	Rated Voltage	Rated impulse Voltage	Rated Currnt (40°C)	Contact resistance	Insulation resistance
	60V DC	1500V	4A	≤3mΩ	≥100MΩ
	63V DC	1500V	4A	≤3mΩ	≥100MΩ

Connector locking system	M8X1.0 Screw
Wiring type	Through Hole
Degree of protection	IP68(in mated condition)
Mechanical operation	> 100 mating cycles
Upper temperature	105°C
Lower temperature	-40°C
Pollution degree	3
Overvoltage categorie	II
Material group	II
Material of contact	Copper alloy
Contact plating	Au
Material of contact body	PA
Sealing	EPDM
Material of housing	Copper nickel plated

 THIRD ANGLE PROJECTION DESIGN UNITS Metric SCALE 2:1 SIZE A4	GENERAL TOLERANCES (UNLESS SPECIFIED)		APPROVE BY	DATE	PART NO.	ITEM NO.	 Building Technology Cornerstone REV 0 SHEET NO. 3/3
	X.±0.30	X.±5°	FRANK	13/Dec/23	FM8ST0401-XXXP104D00	FM8ST0401	
	X.X±0.20	.X'±2'	CHECKED BY	DATE	TITLE		
	X.XX±0.15	.XX'±1'	CHERRY	13/Dec/23	Front fastened M8x1.0 Male Socket 180° THH 【double section】with shield		
X.XXX±0.10	.XXX'±0.5'	DRAWN BY	DATE	THIS DRAWING CONTAINS INFORMATION THAT IS PROPRIETARY TO TXGA INDUSTRIAL ELECTRONICS(S.Z)CO.,LTD AND SHOULD NOT BE USED WITHOUT WRITTEN PERMISSION			
		LAM	13/Dec/23				