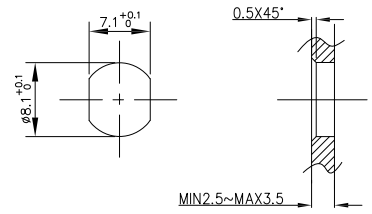
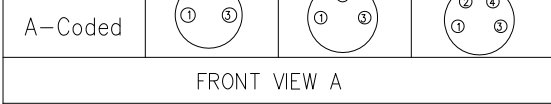
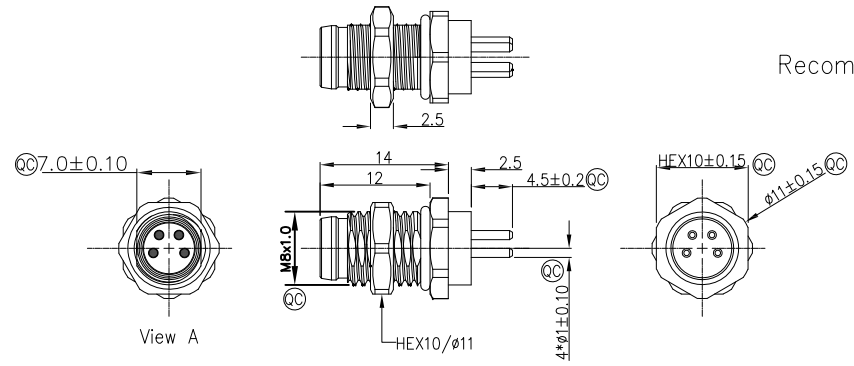


1	2	3	4	5	6	7	8			
Circuits	2Circuits	3Circuits	4Circuits		REV	LOCATIONS	DESCRIPTION	DATE	REVISER	APPD
A-Coded					0		New Release	4/DEC		FRANK

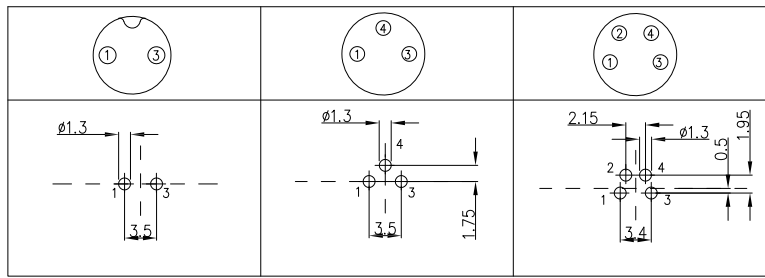


Note:
 1. Ⓞ Important Dimension
 2. Waterproof Rate: IP68
 3. This product must meet IEC61076-2-104
 4. This product must meet 2011/65/EU ROHS compliance.
 5. Not note tolerances: ±0.20
 6. Use torque values 1Nm

Recommended Panel Cut-Out



PCB Layout 【Front view A】



Connector locking system	Screw
Wiring type	Through Hole
Degree of protection	IP68(in mated condition)
Mechanical operation	> 100 mating cycles
Upper temperature	105°C
Lower temperature	-40°C
Pollution degree	3
Overvoltage categorie	II
Material group	II
Material of contact	CuZn (Messing/brass)
Contact plating	Au
Material of contact body	PA
Sealing	EPDM
Material of housing	Brass nickel plated

Ordering Information

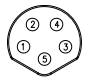
FM8S T04 10 - X XX P 1 04 D 00
 1 2 3 4 5 6 7 8 9

1 Series Name FM8S-M8 Socket	2 Mounting thread T04-Front fastened M8X1.0	3 Distinction No. 10	4 Coded A-A CODED B-B CODED	5 Circuits 02-2Circuits 03-3Circuits 04-4Circuits 05-5Circuits 06-6Circuits 07-7Circuits 08-8Circuits	6 Contact P-Plug
7 Plating 1-Ep Au	8 Thickness Plating 04-0.1µm	9 Wire type D-Through Hole			

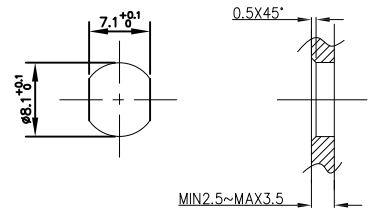
Pin Assignments Front View	Rated Voltage	Rated impulse Voltage	Rated Current (40°C)	Contact resistance	Insulation resistance
	60V DC	1500V	4A	≤3mΩ	≥100MΩ
	60V DC	1500V	4A	≤3mΩ	≥100MΩ
	60V DC	1500V	4A	≤3mΩ	≥100MΩ

 THIRD ANGLE PROJECTION DESIGN UNITS Metric SCALE 2:1 SIZE A4	GENERAL TOLERANCES (UNLESS SPECIFIED)		APPROVE BY FRANK	DATE 4/DEC/23	PART NO. FM8ST0410-XXXP104D00	ITEM NO. FM8ST0410	 Building Technology Cornerstone
	X.±0.30	X.±5'	CHECKED BY CHERRY	DATE 4/DEC/23			
	X.X±0.20	.X'±2'	DRAWN BY LAM	DATE 4/DEC/23	TITLE M8X1.0 male socket 180° [THT] front fastened M8X1.0 Double Section		REV 0

THIS DRAWING CONTAINS INFORMATION THAT IS PROPRIETARY TO TXGA INDUSTRIAL ELECTRONICS(S.Z)CO.,LTD AND SHOULD NOT BE USED WITHOUT WRITTEN PERMISSION

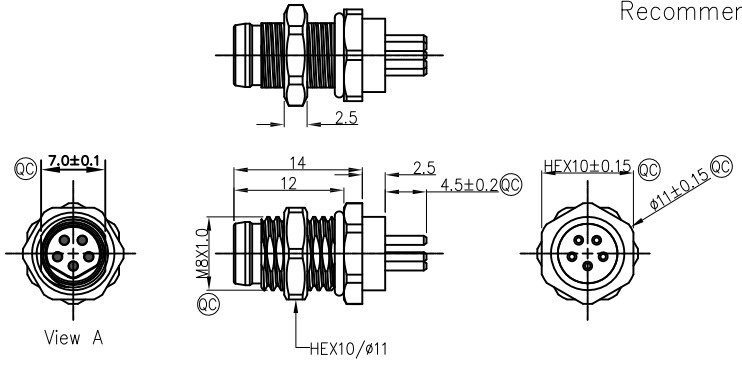
1	2	3	4	5	6	7	8			
Circuits	5Circuits				REV	LOCATIONS	DESCRIPTION	DATE	REVISER	APPD
B-Coded					0		New Release	4/DEC		FRANK

FRONT VIEW A

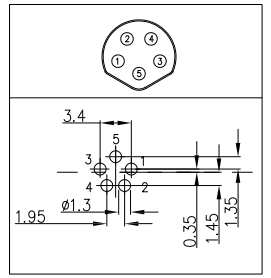


Note:
 1. Ⓞ Important Dimension
 2. Waterproof Rate: IP68
 3. This product must meet IEC61076-2-104
 4. This product must meet 2011/65/EU ROHS compliance.
 5. Not note tolerances: ±0.20
 6. Use torque values 1Nm

Recommended Panel Cut-Out



PCB Layout 【Front view A】






Connector locking system	Screw
Wiring type	Through Hole
Degree of protection	IP68(in mated condition)
Mechanical operation	> 100 mating cycles
Upper temperature	105°C
Lower temperature	-40°C
Pollution degree	3
Overvoltage categorie	II
Material group	II
Material of contact	CuZn (Messing/brass)
Contact plating	Au
Material of contact body	PA
Sealing	EPDM
Material of housing	Brass nickel plated

Ordering Information

FM8S T04 10 - X XX P 1 04 D 00
 1 2 3 4 5 6 7 8 9

1 Series Name FM8S-M8 Socket	2 Mounting thread T04-Front fastened M8X1.0	3 Distinction No. 10	4 Coded A-A CODED B-B CODED	5 Circuits 02-2Circuits 03-3Circuits 04-4Circuits 05-5Circuits 06-6Circuits 07-7Circuits 08-8Circuits	6 Contact P-Plug
7 Plating 1-Ep Au	8 Thickness Plating 04-0.1μm	9 Wire type D-Through Hole			

Pin Assignments Front View	Rated Voltage	Rated impulse Voltage	Rated Current (40°C)	Contact resistance	Insulation resistance
	60V DC	1500V	4A	≤3mΩ	≥100MΩ

 THIRD ANGLE PROJECTION DESIGN UNITS Metric SCALE 2:1 SIZE A4	GENERAL TOLERANCES (UNLESS SPECIFIED)		APPROVE BY FRANK	DATE 4/DEC/23	PART NO. FM8ST0410-XXP104D00	ITEM NO. FM8ST0410	 Building Technology Cornerstone
	X.±0.30	X.±5°	CHECKED BY CHERRY	DATE 4/DEC/23	TITLE M8X1.0 male socket 180° [THT] front fastened M8X1.0 Double Section		
	X.XX±0.20	.X'±2°	DRAWN BY LAM	DATE 4/DEC/23	REV 0	SHEET NO. 3/3	
	X.XX±0.15	.XX'±1°	THIS DRAWING CONTAINS INFORMATION THAT IS PROPRIETARY TO TXGA INDUSTRIAL ELECTRONICS(S.Z)CO.,LTD AND SHOULD NOT BE USED WITHOUT WRITTEN PERMISSION				
X.XXX±0.10	.XXX'±0.5°						